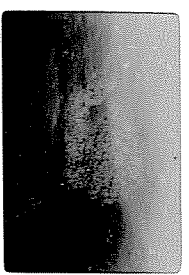


10052 26 X2.5



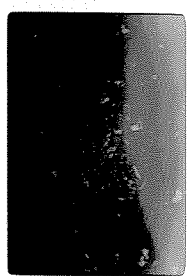
"Tracheolyte type" constrictive  
elastic bodies. Note clear  
of dense matrix in elact

10017, 59 X2.5



Horizontal bands

10051 26 X2.5



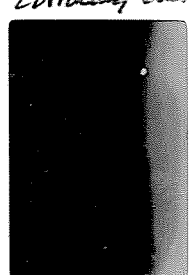
Same as 14 LERN

10017, 59 X2.5



Same as 3 LERN

10050 26 X10



Matrix appearing  
containing elact

Border of elact in #19, 20  
Purged edge's clear from  
matrix on P edge.

10017, 59 X2.5



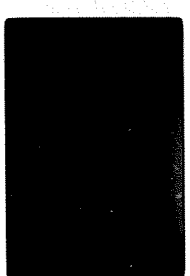
3 px-lined vesicles

10018, 19 X10



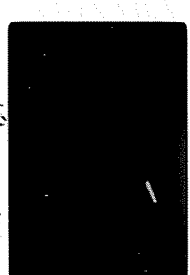
Megalongial Pella, pr

10018, 19 X10



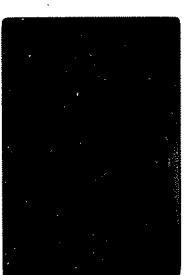
Same as 5 LERN

10014, 19 X2.5



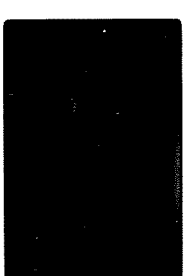
Spherical vesicles of pr

10018, 19 X2.5



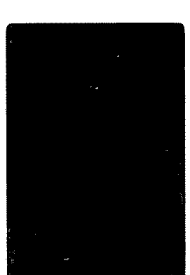
Same as 12 LERN

10018, 19 X2.5



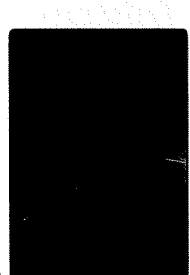
Small pr, pr LERN +  
constrictive in

10018, 19 X2.5



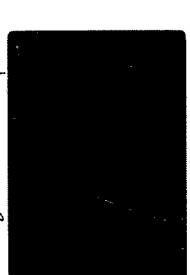
Same as 14 LERN + elact.

10018, 20 X10



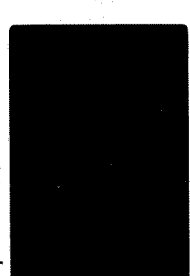
Dens. vesopore elact  
dilation, dark pr, pr?

10018, 19 X10



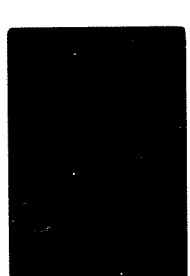
Mesodermite group

10018, 19 X2.5



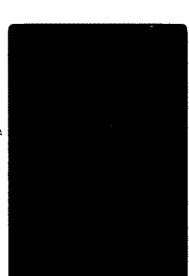
Small vesicles pr  
matrix pr

10018, 20 X10



Same as 16 LERN

10013, 61 X2.5

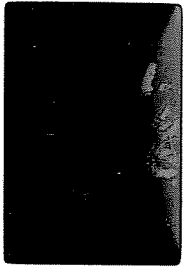


Px-lined vesicles

AGS 7  
MAIT 71P8

10019, 33

X10

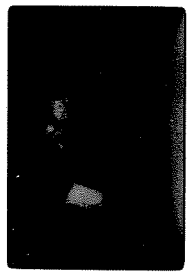


cleat of PC, possibly → sphinx  
1/10. Ad. 1st instar of 1st  
Orbits.

AGS 7  
MAIT 71P8

10019, 33

X10

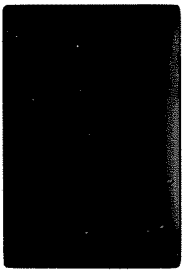


Some no 19, 4x10 +  
confiner

AGS 7  
MAIT 71P8

10019, 33

X10



possibly 1st 3. 4x10. cleat

AGS 7  
MAIT 71P8

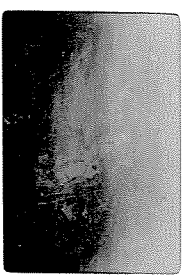
10019, 34

X10



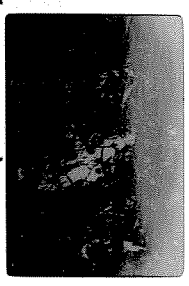
1st 1/2 cleat? 4x10

10020558 X2.5



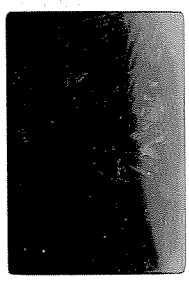
Stroboph. O1 Bao.

10020558 X2.5



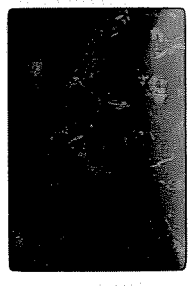
Stroboph. O1 Bao. LXXIV

10020559 X10



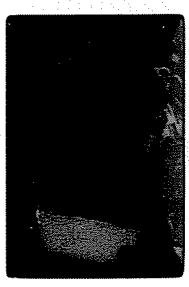
Same as 3 LXXIV

10020347 X2.5



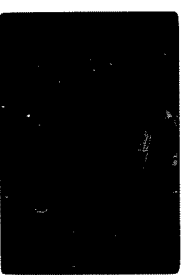
Same as 1, LXXIV

10021, B7723 X10



Clust of vitrophages O1  
Pc plumes.

10021, B7723 X10



Same as 5 LXXIV

10021, B7723 X10



11/18/80 from the clust. O1. very  
Pc's in form of Pc larvae. Pk  
opgs - V & B like mylar?!

10021, B7723 X10



Same as 7 LXXIV

10021, B7723 X10



Clust of vitrophages O1  
broken down in  
problem decoupe pr.

10021, B7723 X10



Same as 7 LXXIV

10021, B7723 X10



After positive clust to Pk  
alignment pc larvae + 2 large  
cuboidal prs. Pk granules

10021, 28 X40



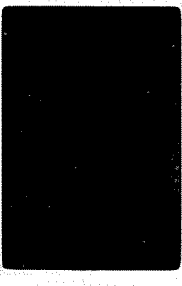
Polygranular Pc banding  
Pc gran in H11

10021, 28 X25



Same as 12, 10020559.

10022, 62 X2.5



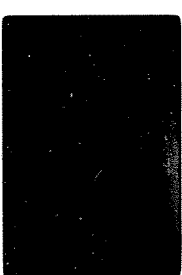
Interaxonal brs.

10022, 62 X2.5



Same as 14 LXXIV

100214, 61 X2.5



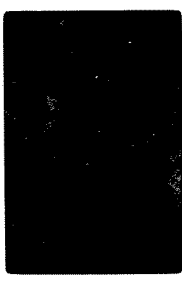
Coarse optically broad  
2 H11s - crist. X15 center

100214, 61 X2.5



Same as 16 LXXIV

100215, 38 X2.5



Sketched O1 plume in  
fine optically brs.