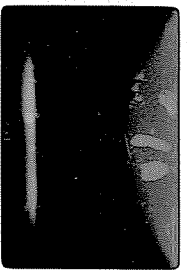


51
12013, 4



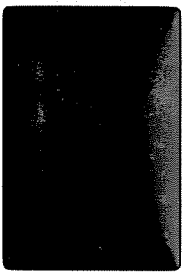
Keyframe 1-3, (1) (2) (3) Beech,
Beech, common elms,
darker matrix (3) white "vine"

51
12013, 4



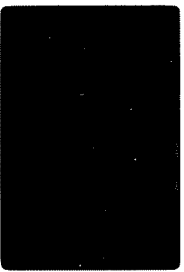
Keyframe 2-3, Condenser
X25

51
12013, 4



Keyframe 2-3

51
12013, 4



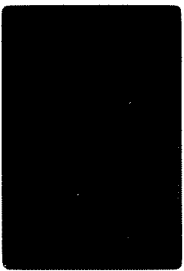
Keyframe 3 X10 Reel 13
Faded, using opps.

51
12013, 4



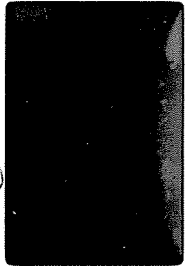
Keyframe 3-4, (1) (2) (3) (4) (5) (6)

51
12013, 4



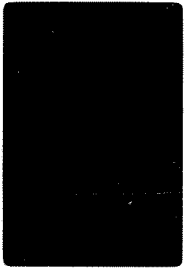
Keyframe 3 - dark picture
with more px

51
12013, 4



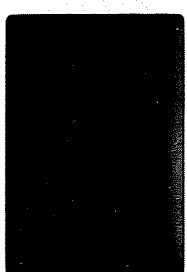
Keyframe 4-5, (1) (2) (3) (4) (5) (6) (7) (8) (9) (10) (11) (12) (13) (14) (15) (16) (17) (18) (19) (20) (21) (22) (23) (24) (25) (26) (27) (28) (29) (30) (31) (32) (33) (34) (35) (36) (37) (38) (39) (40) (41) (42) (43) (44) (45) (46) (47) (48) (49) (50) (51) (52) (53) (54) (55) (56) (57) (58) (59) (60) (61) (62) (63) (64) (65) (66) (67) (68) (69) (70) (71) (72) (73) (74) (75) (76) (77) (78) (79) (80) (81) (82) (83) (84) (85) (86) (87) (88) (89) (90) (91) (92) (93) (94) (95) (96) (97) (98) (99) (100)

51
12013, 4



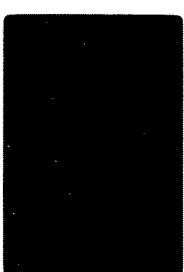
Keyframe 3-4, X10

51
12013, 4



Keyframe 1-2 X25 Condenser
(1) on left

51
12013, 4



Keyframe 3-4 X25 Condenser

51
12013, 4



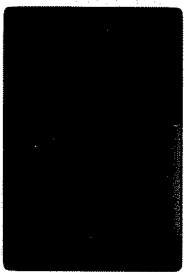
Keyframe 4-5 X25,
Condenser

51
12013, 7



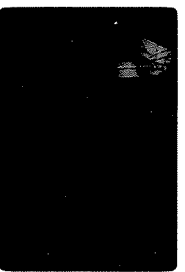
Keyframe 3, 4, 5: Reel 13
Faded, using opps
down pk - ps, headscope

51
12013, 4



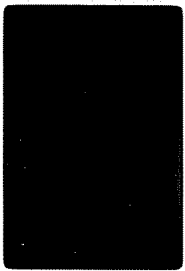
Keyframe 3 X10 Reel 13
Faded, using opps
Condenser

51
12013, 7



Keyframe 5: Reel 13, Faded
Same as 13, 4 & N

51
12013, 4



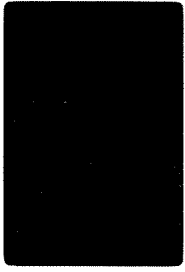
Keyframe 3, Same as 12
X25

51
12013, 7



Keyframe 5, Reel 13, Faded
film. Opps 11 & 12
longer 3

51
12013, 7



Keyframe 1, X10. Reel 12, Fk
Mag. 1000 (C-1) - 01?

51
12013, 7



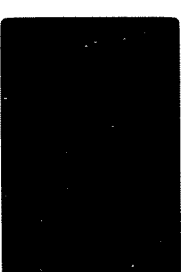
Keyframe 3, 4, Reel 13, Faded
Faded, using opps. Faded
Opps see Keyframe 4

51
12013, 7



Keyframe 1 - Reel 13, Faded
Numerical pk (Opps) - 10
#15 X25

51
12013, 6



Of discharge
See observation

12012, 6



Same as 21, 4x10

6, 2
12021, 133
MAR 71P8
X2.5



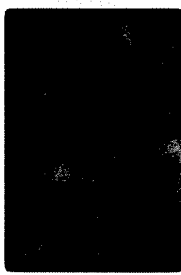
Round pig. Plume.

3, 2
12014, ?
MAR 71P8
X2.5



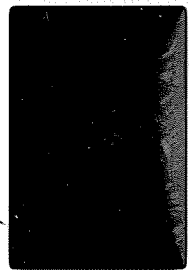
Skulllet 21, 4x10

8, 2
12022, ?
MAR 71P8
X2.5



Round pig. Plume. 4x10

4, 2
12017, 24
MAR 71P8
X2.5



Round pigonite Plume.

9, 2
12022, ?
MAR 71P8
X2.5



4x10

5, 2
12017, 24
MAR 71P8
X2.5



Round pigonite Plume.
4x10

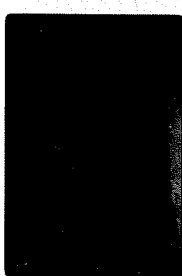
10, 2
12023, ?
MAR 71P8
X2.5



12022, ?
MAR 71P8
X10



12, 2
12022, ?
MAR 71P8
X10



13, 2
12022, ?
MAR 71P8
X10



Px rim on Div. 12

14, 2
12023, 40
MAR 71P8
X25



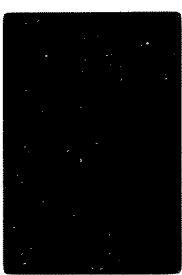
KREEP

15, 2
12023, 40
MAR 71P8
X25



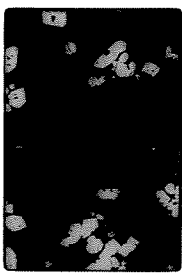
KREEP

16, 2
12026, 11
MAR 71P8
X2.5



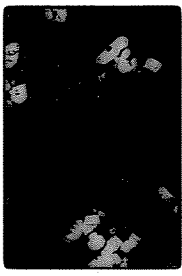
Sacroph.

15, 2
12028, 20
MAR 71P8
X2.5



Pl plumes, Vinyoplyte

16, 2
12028, 20
MAR 71P8
X2.5



Same as 15, 4x10

21, 2
12028, 20
MAR 71P8
X2.5



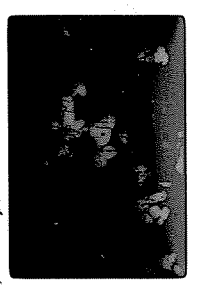
With plumes, Vinyoplyte

21,3
MAR 7 1955
X2.5



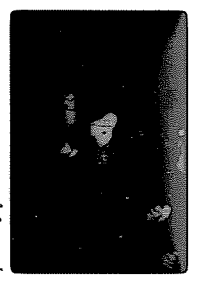
Ophiuro, Vitrophyra

1,3
MAR 7 1955
X2.5



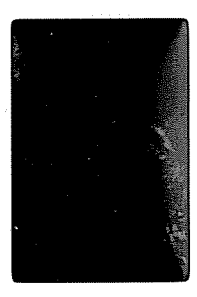
Quanta 2, pr Vitrophyra

2,3
MAR 7 1955
X2.5



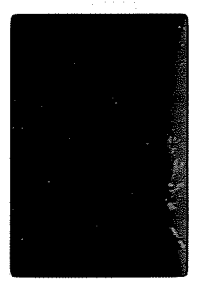
Quanta 2, pr UCN

3,3
MAR 7 1955
X10



Quanta pr

4,3
MAR 7 1955
X10



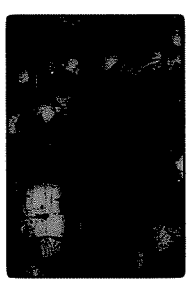
Quanta pr

5,3
MAR 7 1955
X10



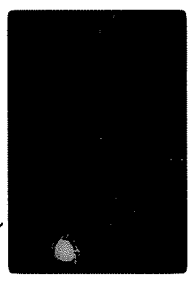
Quanta pr UCN

6,3
MAR 7 1955
X2.5



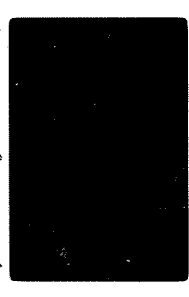
Quanta 21, a little pr

7,3
MAR 7 1955
X10



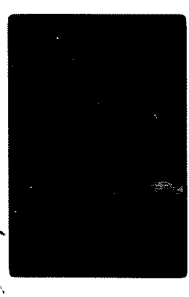
Dio-quanta X15

8,3
MAR 7 1955
X10



Dio-quanta X15 UCN

9,3
MAR 7 1955
X10



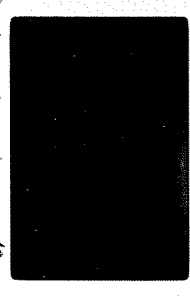
Dio-quanta + pr bearing-bone

10,3
MAR 7 1955
X2.5



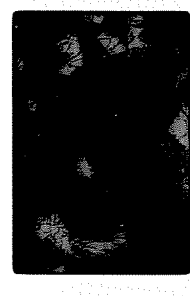
pr bearing bone Quanta

11,3
MAR 7 1955
X2.5



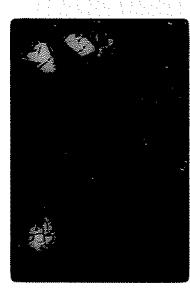
skel et ectopores on Ophiuro in Vitrophyra

12,3
MAR 7 1955
X2.5



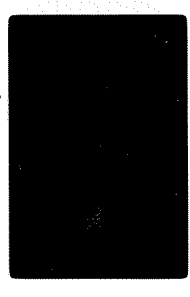
Quanta 21 a cuticular on phanoc

13,3
MAR 7 1955
X2.5



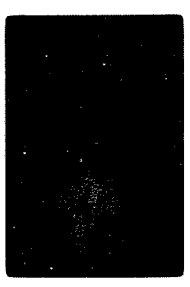
Same as 12 UCN

14,3
MAR 7 1955
X10



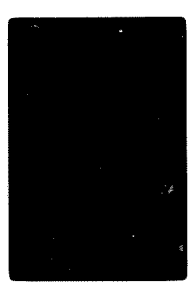
Quanta Dio

15,3
MAR 7 1955
X10



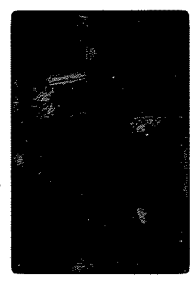
Quanta Dio

16,3
MAR 7 1955
X8.5



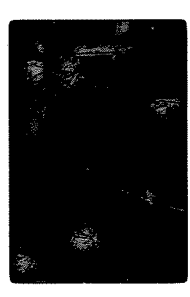
Quanta Dio

17,3
MAR 7 1955
X2.5



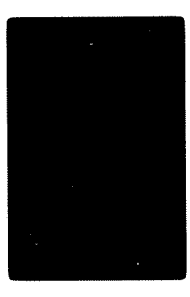
Suboph. UCN

18,3
MAR 7 1955
X2.5



Same as 17 UCN

19,3
MAR 7 1955
X2.5



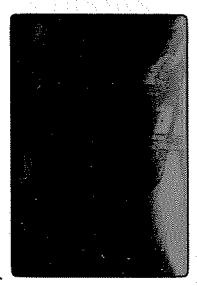
Plumose pr-pr

2,3
12031,4 MAR 7 1955 X2.5



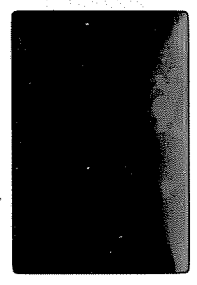
Same as 19, LEXN

2,3
12031,4 MAR 7 1955 X2.5



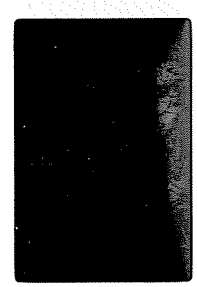
Thin cutting bridge

22,3
12039,6 MAR 7 1955 X2.5



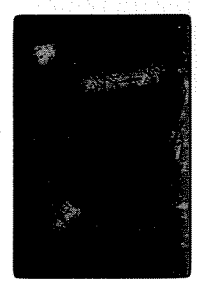
Plumose p-x-pc

1,4
12052,7 MAR 7 1955 X2.5



Px, OI plumose, V&O's -
like gum.

2,4
12082,7 MAR 7 1955 X2.5



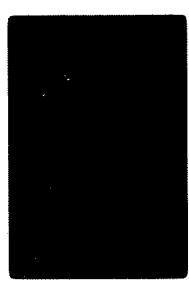
Same as 1, LEXN

3,4
12051,5c MAR 7 1955 X10



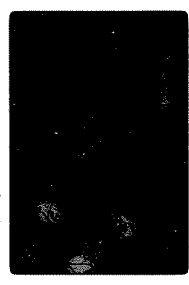
Crystobalite in greenness

4,4
12053,84 MAR 7 1955 X2.5



Vertical base 4

5,4
12053,84 MAR 7 1955 X2.5



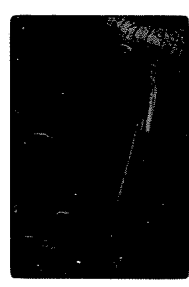
Same as 4, LEXN

6,4
12053,9 MAR 7 1955 X2.5



Coronite (Pau 12053)
Vertical base

7,4
12053,9 MAR 7 1955 X2.5



Same as 6, LEXN

8,4
12054,7 MAR 7 1955 X2.5



Still coronite (Pau 12053)
Sub sub vertical base

9
12054,7 MAR 7 1955 X2.5



Same as 8, LEXN

10,4
12057,30 MAR 7 1955 X2.5



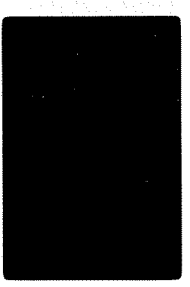
Shaded, plus - several
"near" to the "clash"

11,4
12057,30 MAR 7 1955 X2.5



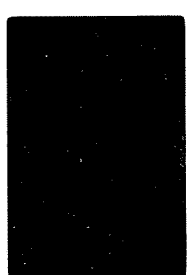
Same as 10, LEXN

12,4
12057,30 MAR 7 1955 X10



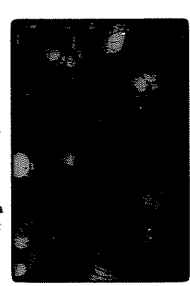
Same as 10, close. Some
plumose veins, still pc

13,4
12057,30 MAR 7 1955 X10



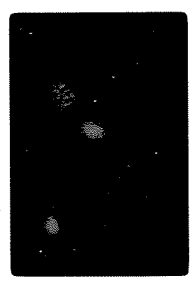
Same as 12, LEXN

14,4
12057,30 MAR 7 1955 X2.5



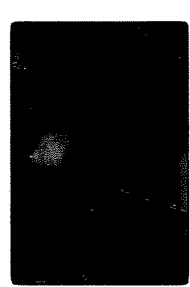
Transmit to (left) of 2
small groups of it in poly-
mit b.

15,4
12057,30 MAR 7 1955 X10



Low transiting material of
2, b received in the condenser
in

16,4
12057,30 MAR 7 1955 X2.5



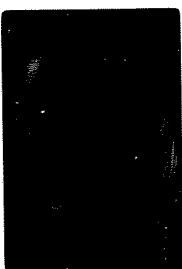
Dist. matrix of polymit
b (A 14)

10,4
12057, 30 X10



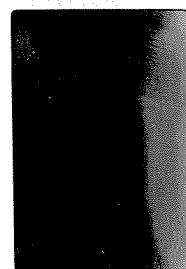
PC clast in polymerized b. matrix, matrix in clast.

4,5
12057, 30 X2.5



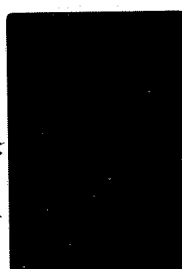
boundary of monomer b. clast in polymerized b. matrix

11,4
12057, 30 X10



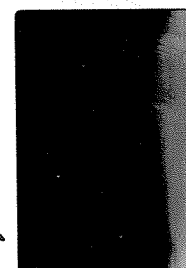
Polymerized PC in polymerized b.

5,5
12057, 30 X10



~~Same as 4~~ Shear zone clast covered by matrix

1,5
12057, 30 X10



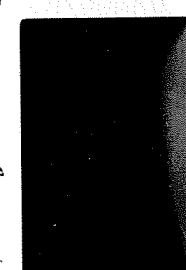
Polymerized PC in polymerized b.

6,5
12057, 30 X10



Same as 5 + condenser

2,5
12057, 30 X2.5



Polymerized PC clast

7,5
12057, 40 X2.5



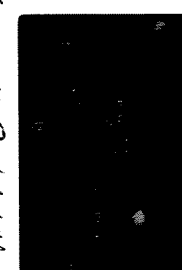
Polymerized PC clast in b.

3,5
12057, 30 X2.5



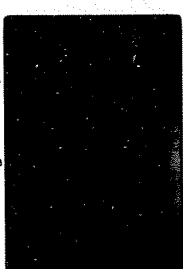
Monomer b. in matrix Shear zone PC clast

8,5
12057, 40 X2.5



Same as 7 LXR

9,5
12057, 40 X10



Unpolished galbho clast

10,5
12057, 40 X10



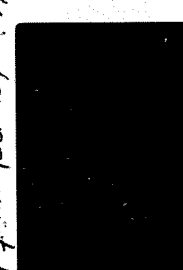
Same as 9 LXR

11,5
12057, 21 X2.5



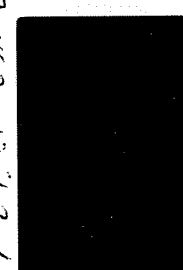
Oliv. unisagabbho

12,5
12057, 24 X2.5



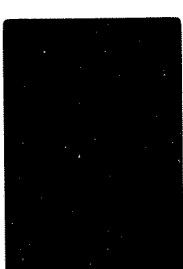
Varicose polymerized b. with unpolished galbho clast

13,5
12057, 24 X2.5



Rock? PX in matrix? clast

14,5
12057, 24 X2.5



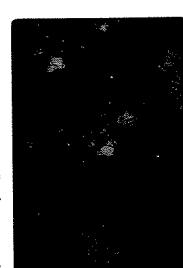
Same as 13 LXR

15,5
12076, 15 X2.5



pl-nick varicose b. clast stellate PX

16,5
12076, 15 X2.5



Same as 15 LXR

17,5
12075, 25 X2.5



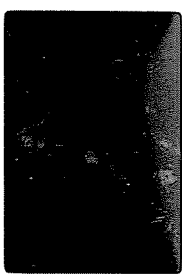
Stellate PX

18,5
12075, 25 X2.5



pl-nick varicose b. clast

19,5 MAR 1955 X2.5



Spinnen im 18. LEXIV

20,5 MAR 1955 X2.5



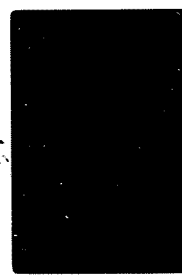
O-Poren, ventrale Seite

21,5 MAR 1955 X2.5



Spinnen im 20. LEXIV

22,5 MAR 1955 X2.5



Subventrale Seite
von Larve

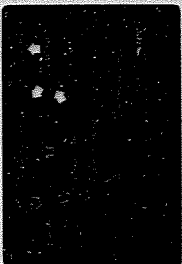
1410 Brown patches
microscopic propp.

5

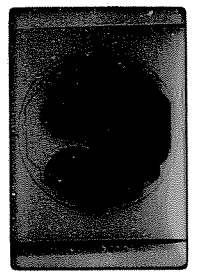
R
01
Tort px



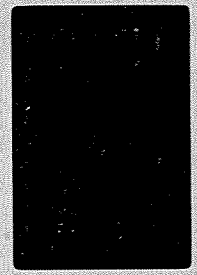
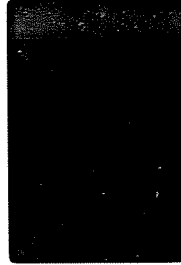
2



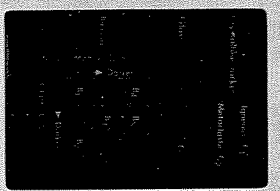
13



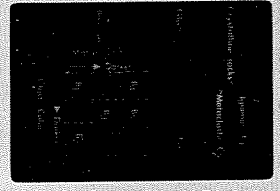
124



11512 E IMPACT PA 17R
top of target c = 30
Dca 5m
0.6m
Alloy
Epsilon
deep in
concrete range
upper brown side of
film in circle, white
arrow
2414
2416



11512 E IMPACT PA 17R
top of target c = 30
Dca 5m
1.0m
Alloy
Epsilon
white foam layer
brown higher
Brown cones at
sides & top ends



1