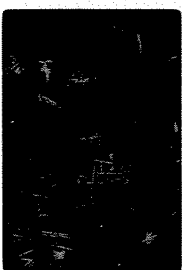


5, 8 APR 71P2
14306, 14 2.2mm



Close up of *hankia* etc

10, 8 APR 71P2
14310, ~~28~~ 28 3.4mm



Same as 9 WKN C1

15, 8 APR 71P2
14307, 13 0.9mm



Close up of *Peziz* sp.,
mylonite, WKN

20, 8 APR 71P2
14310, 10 3.4mm



Same as 19 WKN

9, 8 APR 71P2
14310, 28 3.4mm



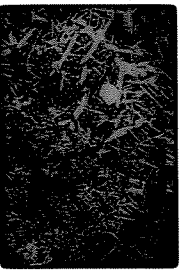
Patchy coarse - fine texture
of 310 + small fine
coprate small C1

14, 8 APR 71P2
14307, 13 2.2mm



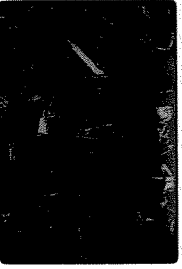
Same as 13 WKN

19, 8 APR 71P2
14310, 10 3.4mm



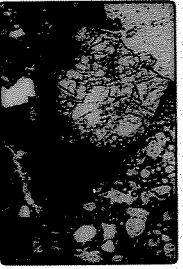
Coprate used. *Chaetochy*
?)

8, 8 APR 71P2
14310, 28 3.4mm



Same as 7 WKN
C1

13, 8 APR 71P2
14307, 13 2.2mm



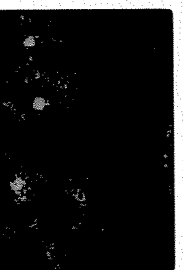
α B 01, 02 in clastic chert
in separated by 2 in
glauconitic matrix

18, 8 APR 71P2
14307, 13 2.2mm



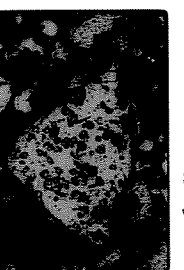
Same as 17 WKN

12, 8 APR 71P2
14307, 14 3.4mm



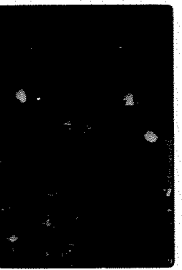
Same as 11 WKN

17, 8 APR 71P2
14307, 13 2.2mm



See photo 10-19
Hemichord? broad flat
in glauconitic matrix

6, 8 APR 71P2
14306, 11 2.2mm



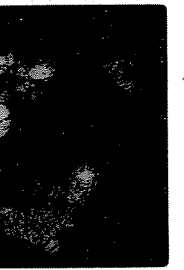
Same as 5 WKN

11, 8 APR 71P2
14307, 14 3.4mm



Type 2 clasts in vesicular
glass

16, 8 APR 71P2
14307, 13 0.8mm



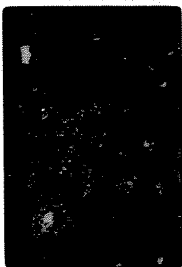
Same as 15 WKN

21, 8 APR 71P2
14310, 10 3.4mm



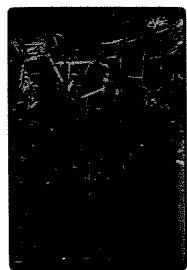
Homotaxite? Composite
incl.

26, 8 APR 71P2
14318, 4 2.8mm



Stromaeo 25 LXXIV

22, 8 APR 71P2
14310, 15 3.4mm



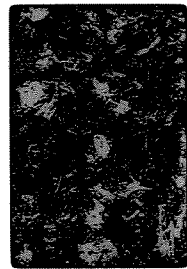
Stromaeo 31 LXXIV

27, 8 APR 71P2
14316, 7 0.75mm



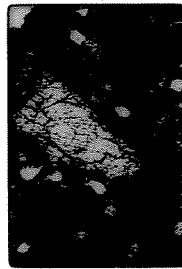
Mylonitic red dentrite, juvenile
pc, pink spines. In type 2
clear

23, 8 APR 71P2
14310, 15 0.9mm



Stromaeo 21, highly mag

28, 8 APR 71P2
14318, 5 2.2mm



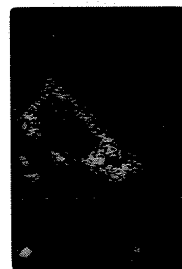
Mylonitic red dentrite (or simple
Oliv) in type 2, somewhat large
& with pc lathes

24, 8 APR 71P2
14310, 15 0.9mm



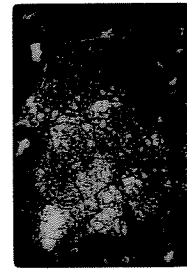
Stromaeo 23, LXXIV

29, 8 APR 71P2
14315, 5 2.2mm



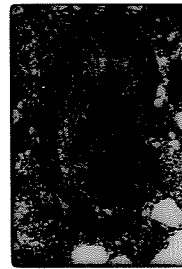
Stromaeo 23 LXXIV

25, 8 APR 71P2
14318, 4 2.8mm



Mylonitic red dentrite with
inclusion pc, pink spines
in type 2 clear

30, 8 APR 71P2
14318, 8 2.8mm



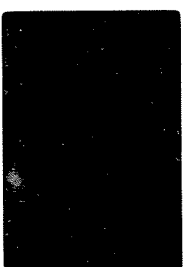
Aligned pc in clear - incl.
in dark red, faint ground
textile - clear striae

31, 8 APR 71P2
14315, 8 2.8mm



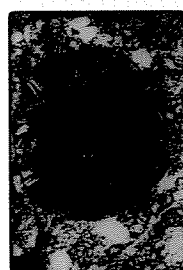
Stromaeo 30 LXXIV

36, 8 APR 71P2
14318, 8 0.6mm



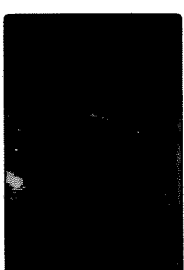
Spines of Vitroplage -
pc, Oliv.

32, 8 APR 71P2
14318, 8 0.9mm



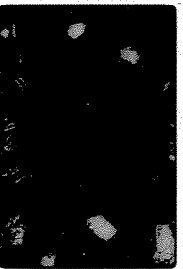
Spines of Vitroplage bas-
Oliv for little pc

37, 8 APR 71P2
14318, 8 0.6mm



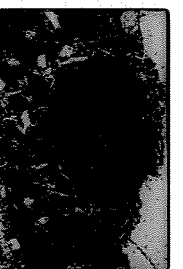
Stromaeo 32 LXXIV

33, 8 APR 71P2
14318, 8 0.9mm



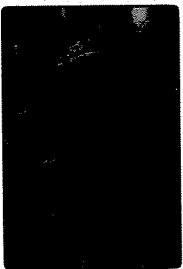
Stromaeo 32, LXXIV

34, 8 APR 71P2
14318, 8 0.9mm



Type 1 clear incl in inter-
axial basal

35, 8 APR 71P2
14318, 8 0.9mm



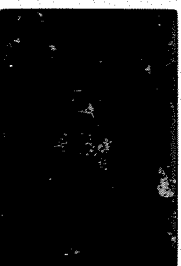
Stromaeo 34 LXXIV

5,9
14321,7 0.6mm



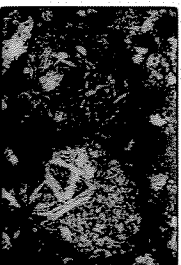
Spines of 1 type 2" 20, making
pe lathes - (ps) 0.5-1.5 microns

2,9
14321,8,9 0.6mm



Spines as 1 type

3,9
14321,10 0.9mm



2" type 2" spines

4,9
14321,10 0.8mm



Spines as 3 type

11,9
14321,16 3.4mm



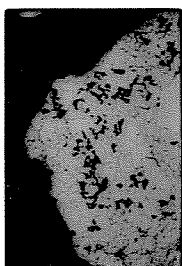
0.53 type clasts in clast
clast! Numerous in clast
on left.

12,9
14321,16 3.4mm



Spine as 11 type

17,9
14321,21 2.8mm



Spine clast as H 9, but
OK in it have
deussate texture - horizontal

15,9
14321,16 0.9mm



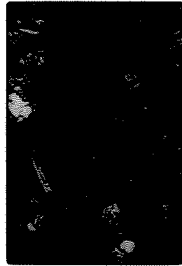
Vitroplage no skeletal
di. v.

18,9
14321,21 2.8mm



Spine as 17, type
Deussate bands

14,9
14321,16 0.8mm



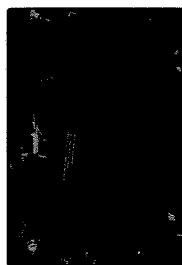
Spine as 13 type

19,9
14321,22 0.9mm



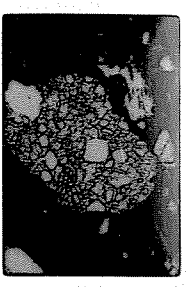
Vitroplage with pe lathes
in type 3 clast

20,9
14321,22 0.9mm



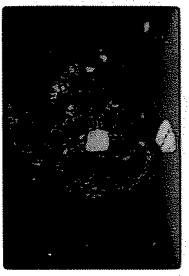
Spine as 19 type

21, 9
14321, 24 0.7mm



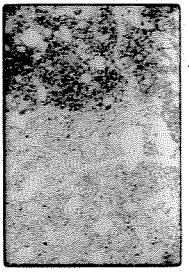
Pt's pitk. ecd. by single
Px (opx?)

22, 9
14321, 24 0.8mm



Same as 21 WKN

23, 9
14321, 27 3.4mm



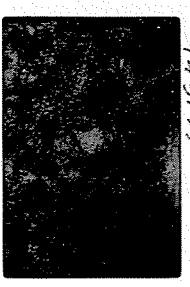
Type 2 in type 3. Note
Dorsal surface

24, 9
14321, 27 3.4mm



Same as 23 WKN

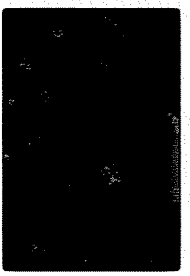
31, 9
APR 71P6



Px nec. view on slide

~~14319, 2~~ 0.4mm

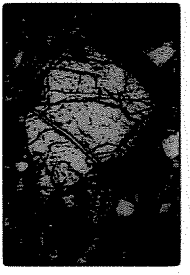
32, 9
APR 71P6



Same as 31 WKN

14319, 2 0.4mm

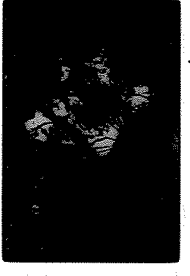
33, 9
APR 71P6



Dorsal view

14319, 3 0.4mm

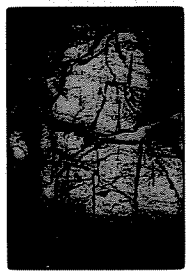
34, 9
APR 71P6



Same as 33 WKN

14319, 3 0.8mm

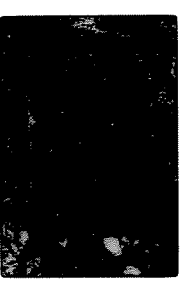
35, 9
APR 71P6



Large deformed P1
with nec. view

14319, 3 0.8mm

Same as 35 WKN



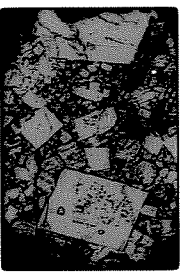
36, 9
14319, 3 0.8mm

P12? 20: px view in
type 3 cleat



31, 9
14305, 2 0.2mm

21, 9
14321, 27 0.9mm



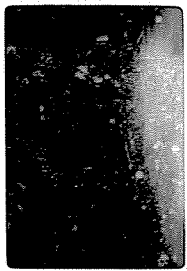
cleat
Same as 25, different
structure
Re-opx view, glass t? portion

26, 9
14321, 27 0.9mm



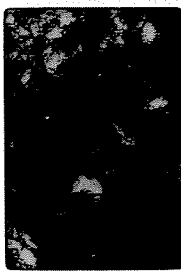
Same as 27 WKN

1, 10 JUN 1963
14307, 24 3.4



Conradly, retiliz DID

6, 10 JUN 1963
14307, 24 0.6



Same as 5, UXXU

2, 10 JUN 1963
14307, 24 3.4



Same as 1, UXXU

7, 10 JUN 1963
14307, 24 0.7



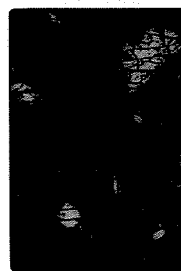
DID with 1% pc - perhaps
clashes - finally retiliz with it.

3, 10 JUN 1963
14307, 24 0.9



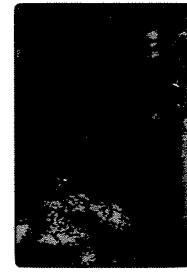
Conradly, retiliz DID
Shade for perhaps -
clashes

8, 10 JUN 1963
14307, 24 0.7



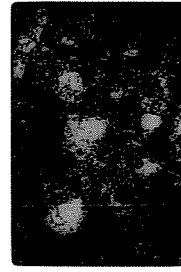
Same as 7, UXXU

4, 10 JUN 1963
14307, 24 0.9



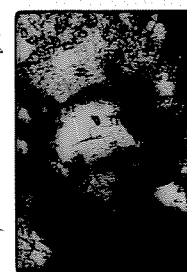
Same as 3 UXXU

10, 10 JUN 1963
14307, 24 0.7



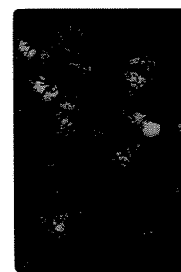
DID matches with
shaded with pc's

5, 10 JUN 1963
14307, 24 0.6



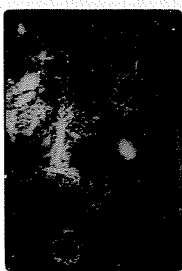
Half retiliz, colorless
glass sphere

11, 10 JUN 1963
14307, 24 0.7



Same as 10 UXXU

12, 10 JUN 1963
14307, 25 0.7



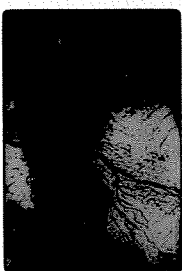
DID with vitrophytic
bubbles

17, 10 JUN 1963
14307, 24 0.6



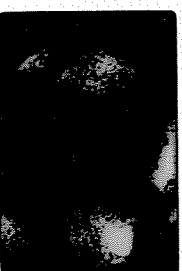
D1 -> Opx + spind

13, 10 JUN 1963
14307, 24 0.9



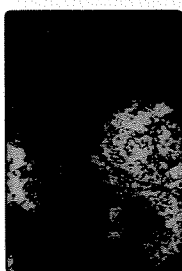
Spent lead "gabber" -
pc - pc retiliz, not
mixed

18, 10 JUN 1963
14307, 24 0.6



Oliv -> Opx + spind

14, 10 JUN 1963
14307, 24 0.9



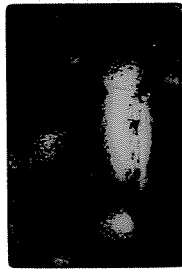
Same as 13, UXXU

19, 10 JUN 1963
14307, 13 0.2



Opx (big?), Oliv, UXXU
pc, ~~port~~ port
pc - ~~port~~ port

15, 10 JUN 1963
14307, 24 0.9



Oliv -> Opx + spind

20, 10 JUN 1963
14307, 13 0.2



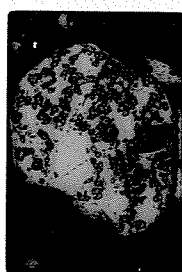
Same as 20, UXXU

16, 10 JUN 1963
14307, 24 0.9



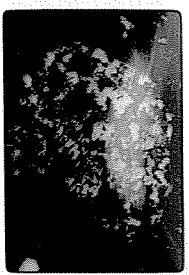
Same as 15 UXXU

21, 10 JUN 1963
14307, 13 0.2



Px (thin?) Oliv, UXXU,
port, Oliv, pc -> Oliv, UXXU
27

22,10 JUN 1973
14304,13 2.2



Same as 21, 14304 C7

23,10 JUN 1973
14307,43 0.8



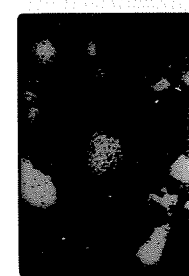
Did attach to housefly?
beetle? counter as needed to
D1b

24,10 JUN 1973
14307,43 5.0



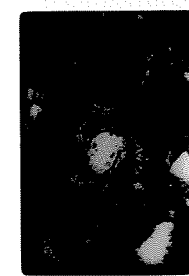
Did attach to housefly?
beetle? counter as needed
to D1b

25,10 JUN 1973
14308,3 0.6



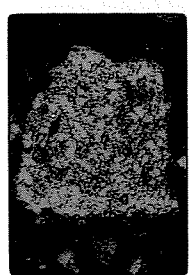
O1 + 7 spines + sp X - note
small of copy, etc.

26,10 JUN 1973
14308,3 0.6



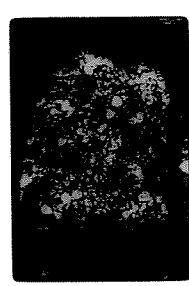
Same as 25, 14308

27,10 JUN 1973
14304,13 0.9



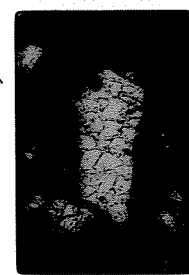
ps - milk housefly

28,10 JUN 1973
14304,13 0.9



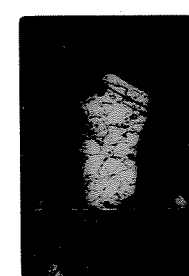
Same as 27, etc

29,10 JUN 1973
14304,14 0.6



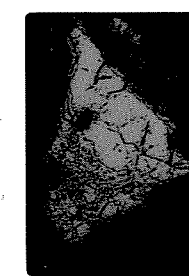
Mosaic structure in
pc poppy no dent

30,10 JUN 1973
14304,14 0.6



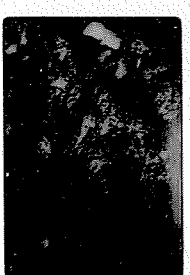
Same as 29, etc

31,10 JUN 1973
14304,14 0.6



Mosaic structure in pc -
etc 11,12

32,10 JUN 1973
14304,14 0.6



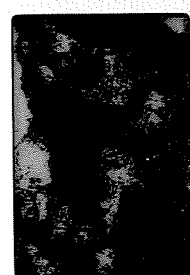
Same as 31, etc

33,10 JUN 1973
14304,11 0.6



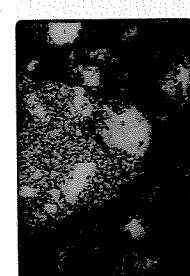
Red main. 200 Hc. Reddish
beds? Here same

34,10 JUN 1973
14304,11 0.6



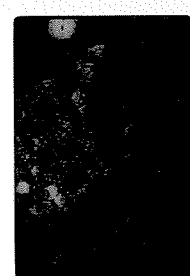
O1 -> spine + px

35,10 JUN 1973
14306,7 2.2



D1b, dom. spx, in D1d
clay

36,10 JUN 1973
14306,7 2.2



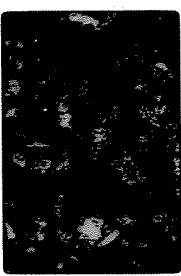
Same as 35, etc

1,11 JUN 71P8
14306,7 2.2



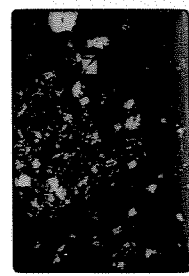
D16, dem. opx in D1d
clear

6,11 JUN 71P8
14301,7 0.9



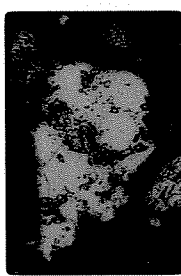
Same as 5, UXRN

2,11 JUN 71P8
14306,7 2.2



Same as 1, UXRN

7,11 JUN 71P8
14301,7 0.6



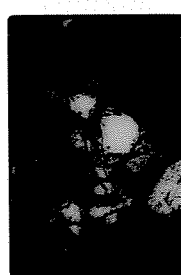
D16 go. feldite opx, minor
py. in interstices

3,11 JUN 71P8
14301,7 0.9



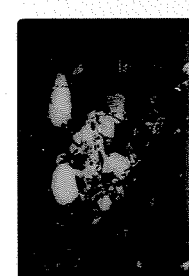
Pc cumulate? no. pyroxene,
Cpx + minor spinel, feldite
in opx-rich cumulate

8,11 JUN 71P8
14301,7 0.6



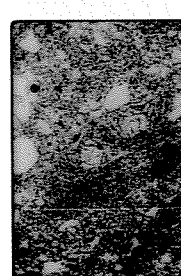
Same as 7, UXRN

4,11 JUN 71P8
14301,7 0.9



Same as 3, UXRN

9,11 JUN 71P8
14301,18 2.2



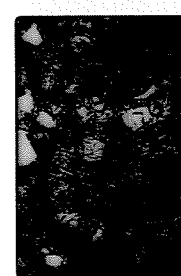
D16 breccia cleat (C3) in
D16 cleat

5,11 JUN 71P8
14301,7 0.9



D16 go. feldite-opx,
pyroxene, cpx, spinel feld.
in pc pyroxene breccia

10,11 JUN 71P8
14301,18 2.2



Same as 9, UXRN

11,11 JUN 71P8
14301,18 0.9



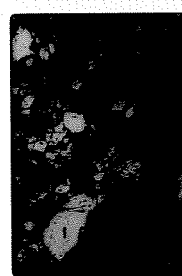
D16 opx + pyroxene
Cpx in spin. feldite, feld.
inclusions in pyroxene

16,11 JUN 71P8
14318,7 0.9



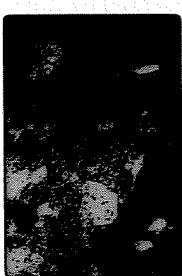
Same as 15, UXRN
C3

12,11 JUN 71P8
14301,18 0.9



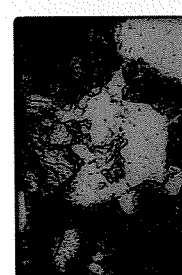
Same as 11, UXRN

19,11 JUN 71P8
14318,7 0.9



D16 cleat to pc-opx?
cumulate, pyroxene, cpx

13,11 JUN 71P8
14301,18 0.9



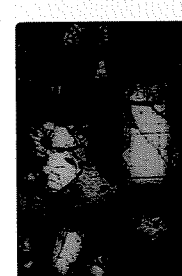
D16 cleat (same as photo 3)
no. opx + spinel, pyroxene,
Cpx in cleat

20,11 JUN 71P8
14318,7 0.9



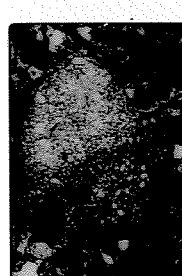
Same as 19, UXRN

14,11 JUN 71P8
14301,18 0.9



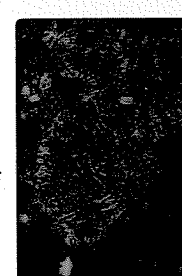
Same as 13, UXRN

21,11 JUN 71P8
14318,7 3.4



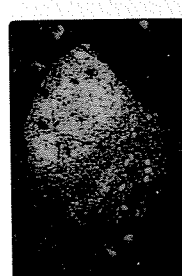
D16 (or d?) attached to
dense mylonite

15,11 JUN 71P8
14318,7 0.9



D16 cleat 20/19 interface
D16 breccia cleat
C3

22,11 JUN 71P8
14318,7 3.1



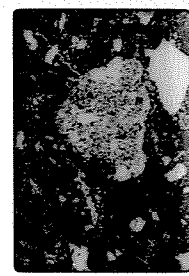
Same as 21, UXRN

20, 11 JUN 71P8
14318, 8 3.4



2" accretionary" clasts

24, 11 JUN 71P8
14318, 8 3.4



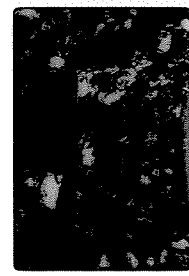
Partial glass envelopes on D16s

25, 11 JUN 71P8
14318, 8 0.9



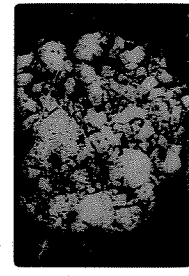
Magwell (?) pc clasts as postcum. opx?

20, 11 JUN 71P8
14318, 8 0.9



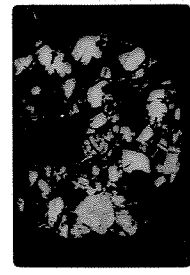
Spinel no 25 cxd

27, 11 JUN 71P8
14318, 11 2.2



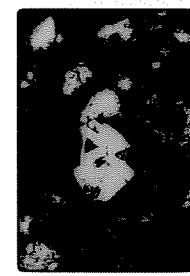
Reaccumulation postcum. cpx, glass

25, 11 JUN 71P8
14318, 11 2.2



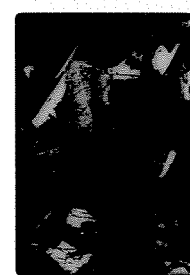
Spinel no 27 cxd

25, 11 JUN 71P8
14042, ? 0.6



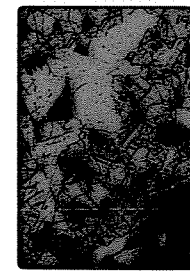
Shaded 310 binovolt pc -> microprobe write

37, 11 JUN 71P8
14083, 8 0.9



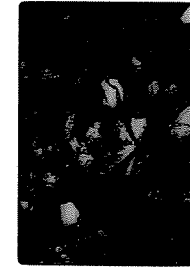
Spinel no 36, cxd

35, 11 JUN 71P8
14083, 8 0.9



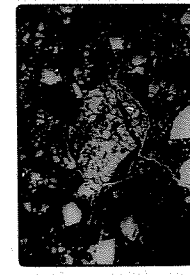
pc clasts, cpx & glass particles

35, 11 JUN 71P8
14083, 8 2.2



Spinel no 34, cxd

34, 11 JUN 71P8
14083, 8 2.2



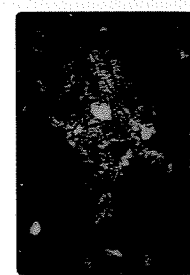
Spinel no 33 cxd

35, 11 JUN 71P8
14083, 8 2.2



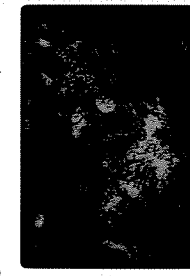
Reformed cpx capping spinel by iron titan - replace by iron titan in breccia

32, 11 JUN 71P8
14305, 15 0.7



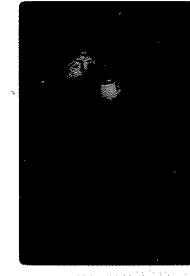
Spinel no 31 cxd

31, 11 JUN 71P8
14305, 15 0.7



Por. clay green amorph. 220 at the 1. Enriched in px?

30, 11 JUN 71P8
14042, ? 0.6



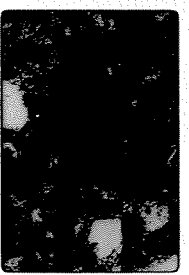
Spinel no 29 cxd

1, 12 JUN 71 P1
140476 O.6



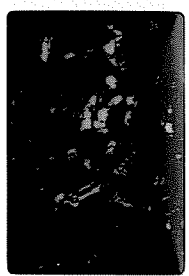
Muscle fiber cell Pe in D16,
OPX-Vital stain

6, 12 JUN 71 P1
140497 O.6



Reel: Virus on OPXs

2, 12 JUN 71 P1
140476 O.6



Same as 1, U&M

7, 12 JUN 71 P1
14066, 10 O.6



Pe clumps, PDBum
spx, OPX (3) - electron
D16 class 1

3, 12 JUN 71 P1
140476 O.6



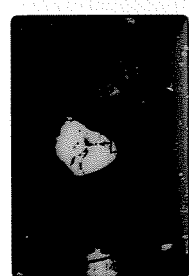
Muscle fiber cell
Pe, 1 spx helix
A-2

8, 12 JUN 71 P1
14066, 10 O.6



Same as 7, U&M

4, 12 JUN 71 P1
140476 O.6



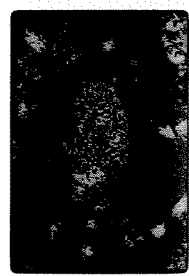
Same as 3, U&M
A-2

9, 12 JUN 71 P1
14066, 10 O.6



Red mineral of electron

5, 12 JUN 71 P1
140497 O.6



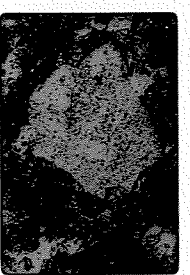
Metablast

10, 12 JUN 71 P1
14066, 10 O.6



Same as 9, U&M

11, 12 JUN 71 P1
14066, 10 O.6



D2 - Catecholase h's amon-
Thioflav

12, 12 JUN 71 P1
14066, 10 O.6



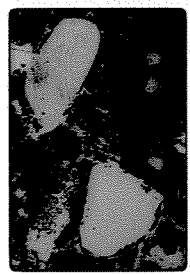
Same as 11, U&M

17, 12 JUN 71 P1
14066, 10 O.7



C7a clast in D16
pe cum, OPX postern

13, 12 JUN 71 P1
14066, 10 A.2



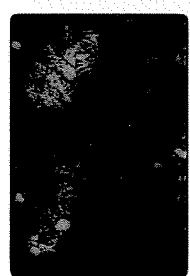
D16 clast containing
D1a, C7a (pe cum, OPX
postern), & a large spc

18, 12 JUN 71 P1
14066, 10 O.7



Same as 17 U&M

14, 12 JUN 71 P1
14066, 10 A.2



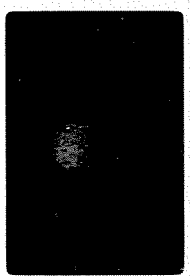
Same as 13 U&M

20, 12 JUN 71 P1
14066, 11 O.7



D16 clast in D15

15, 12 JUN 71 P1
14066, 10 A.23



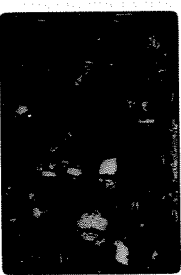
Amorphous - triple jets
& curved fibers

25, 12
14082, 10 0.9



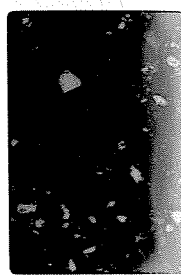
D16 cleat (Fig. 9) good pe
rmin (spines) in corners
D16 cleat

26, 12
14082, 10 0.6



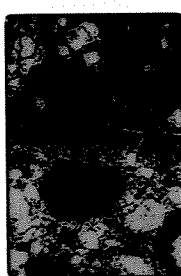
Same as 25 LXXN
D16

27, 12
14082, 10 0.7



Same as 21, LXXN

27, 12
14082, 10 0.9



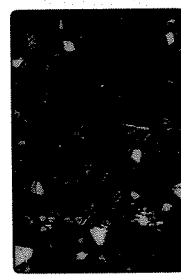
Same. LXXN #25; 2
removed PCs; cleavate
and; also cleat

28, 12
14082, 10 0:30



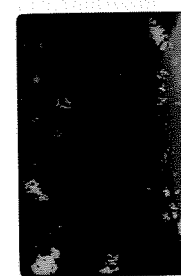
Top. host matrix - fairly
fine (1/2) pebbles, bl.
green matrix pe

28, 12
14082, 10 0.9



Same as 27 LXXN

29, 12
14082, 10 0:36



Same as 23 LXXN

29, 12
14082, 10 0.9



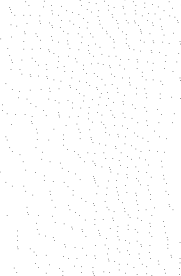
V. coarse D16 no. 20
pe; possible. opt. D16

30, 12
14082, 10 0.6



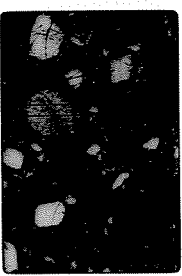
Repor phreatic in D16
broad beam base lighter
RT than core
D16

30, 12
14082, 10 0.9



Same as 33, LXXN

36, 12
14082, 10 0.9



Same as 35 LXXN

37, 12
14082, 10 0.6



PC clear, cpx post-
clm.

33, 12
14082, 10 3.4



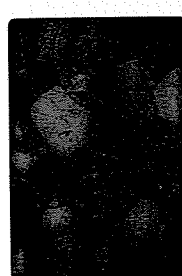
Ground view of White
Rock

34, 12
14082, 10 3.4



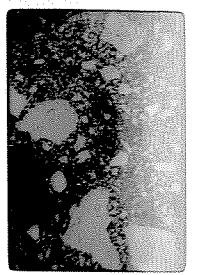
Same as 33 LXXN

35, 12
14082, 10 0.9



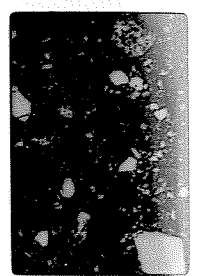
Same as 33, LXXN

1, 13 JUN 1963
14082, 10 3.4



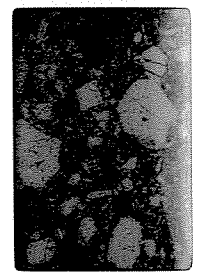
General view of white
Rock - same as 1953

2, 13 JUN 1963
14082, 10 3.4



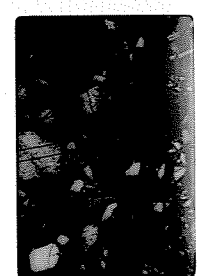
Same as 12X10

3, 13 JUN 1963
14082, 10 0.9



Same as 1, clear

4, 13 JUN 1963
14082, 10 0.9



Same as 3, 12X10

5, 13 JUN 1963
14082, 10 0.6



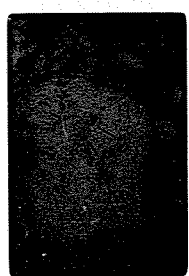
Pl. tissue, 40X portion

6, 13 JUN 1963
14082, 10 0.6



Same as 5, 12X10

7, 13 JUN 1963
14082, 10 0.9



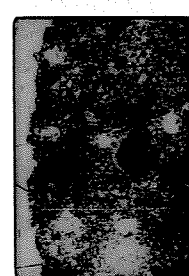
Clust with characteristic
texture - microscope

8, 13 JUN 1963
14082, 10 0.9



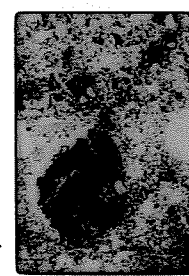
Same as 7, 12X10

9, 13 JUN 1963
14082, 11 5.0



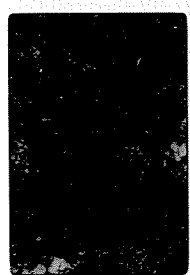
Magnifying - dark clasts,
fine gran on left, color
9m X4

10, 13 JUN 1963
14082, 11 2.2



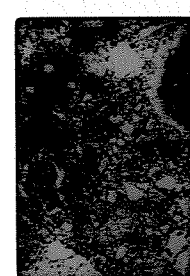
Heavy polymeric breccia
clasts

11, 13 JUN 1963
14082, 11 2.2



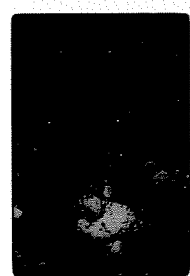
Same as 10, 12X10

14, 13 JUN 1963
14082, 11 2.2



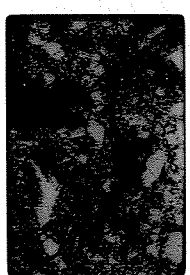
Cut of layer - clear
view

15, 13 JUN 1963
14082, 11 2.2



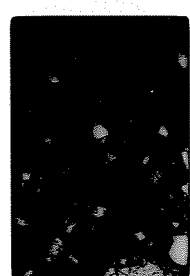
Same as 14, 12X10

16, 13 JUN 1963
14082, 11 0.9



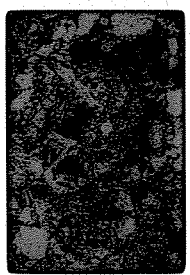
key on cut clear

17, 13 JUN 1963
14082, 11 0.9



Same as 16, 12X10

18, 13 JUN 1963
14082, 11 0.7



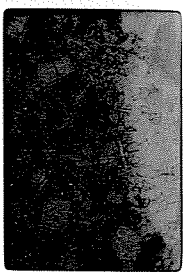
11 fig. pl. tissue, open part -
same as 11

19, 13 JUN 1963
14082, 11 0.7



Same as 18, 12X10

20, 13 JUN 1973
14083, 11 0.7



Plant like that in #18
Feeds on algae

25, 13 JUN 1973
14083, 8 2.2



Same as 24 UXM

30, 13 JUN 1973
14083, 8 2.7



beginning with clasts
Hydrate mat, in cl.

- Dark oxide maybe
clast

35, 13 JUN 1973
14321, 34 3.4



Same as 34 UXM

21, 13 JUN 1973
14083, 11 0.7



Same as 20 UXM

31, 13 JUN 1973
14083, 8 2.7



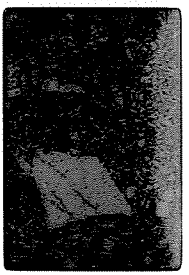
Same as 30 UXM

36, 13 JUN 1973
14321, 34 2.2



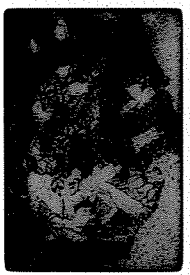
"B53", poor opt. text,
oliv present, much
micro.

22, 13 JUN 1973
14083, 12 0.7



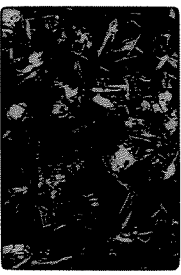
like 18, 20 but less
porphyroblast

32, 13 JUN 1973
14083, 8 2.2



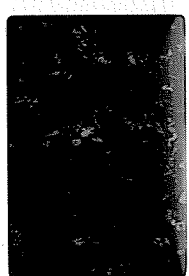
310 type - Indeterminate
opt

37, 13 JUN 1973
14321, 321 2.2



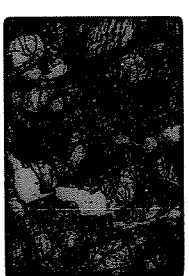
Same as 36 UXM

23, 13 JUN 1973
14083, 12 0.7



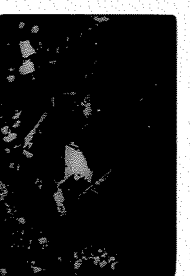
Same as 22 UXM

28, 13 JUN 1973
14083, 8 0.7



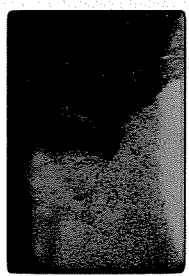
Same, closer showing
PC marks in ol - pc's
max 1/2

33, 13 JUN 1973
14083, 8 2.2



Same as 32 UXM

24, 13 JUN 1973
14083, 8 2.2



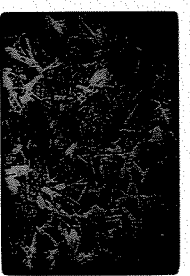
Crater lat. Sample of 20,
Synthetic pc in cl's, compare
to #11, 12 pc

29, 13 JUN 1973
14083, 8 0.7



Same as 24 UXM

34, 13 JUN 1973
14321, 34 3.4



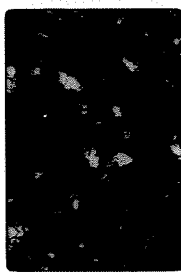
D53 type; very old
oliv. (black veins)

2, 14 JUN 1953
14326, 35 0.9



Recess, zone one spx in dark
matrix - greater zone of
spx, part of detm., middle
shown

7, 14 JUN 1953
14313, 9 0.6



Same as 6, UXR10

4, 14 JUN 1953
14310, 34 3.4



Optical point of 310,
no detm., little mass

9, 14 JUN 1953
14313, 9 0.7



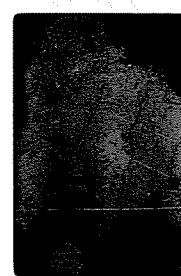
Same as 8, UXR10

5, 14 JUN 1953
14310, 34 3.4



Same as 4, UXR10

10, 14 JUN 1953
14313, 9 0.9



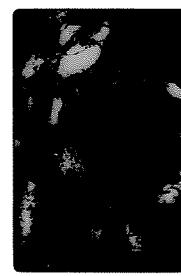
Calciferous pr 499.

6, 14 JUN 1953
14313, 9 0.6



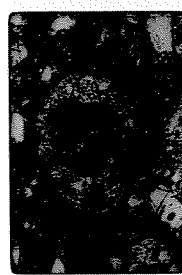
Pe-spx vitroplage

11, 14 JUN 1953
14313, 9 0.9



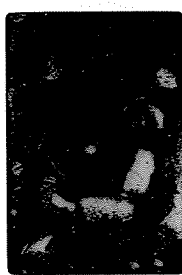
Same as 10 UXR10

12, 14 JUN 1953
14313, 9 0.6



Circular clast of clastic
mat in clast-b, little
glass in matrix

17, 14 JUN 1953
14313, 8 0.6



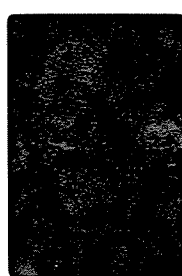
Dark glass opbeva

13, 14 JUN 1953
14313, 9 0.36



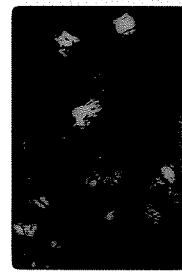
Coarse opx-rd D16?
happels

21, 14 JUN 1953
14313, 8 0.36



Relict opx-spx (some
aggregates of cpx) in D16
in clast-b, det

14, 14 JUN 1953
14313, 9 0.36



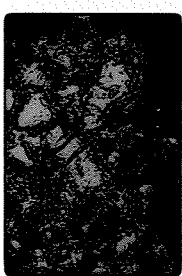
Same as 13, UXR10

22, 14 JUN 1953
14313, 8 0.36



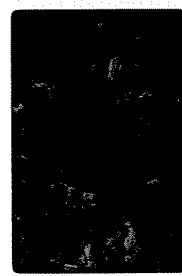
Same as 21, UXR10

15, 14 JUN 1953
14313, 9 0.6



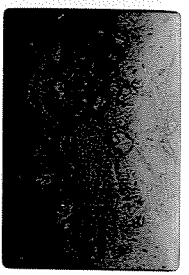
Div-lamining opx happels
D16 type metaclastic

16, 14 JUN 1953
14313, 9 0.6



Same as 15 UXR10

25, 14
14313, 8 .30



CPX-pc hornfels

28, 14
14063, 28 R.2



Same as 27, better

34, 14
14063, 23 T8.0



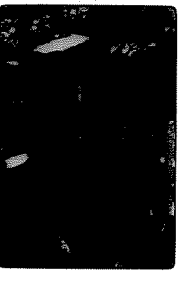
Same as 33, better

24, 14
14313, 8 .30



Same as 23, better

30, 14
14063, 28 0.9



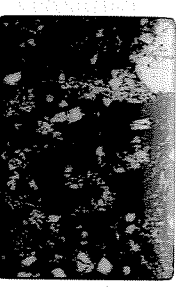
Same as 29, close to better

35, 14
14063, 28 T8.0



Prob. same "lagging" dark clasts in matrix as #22

25, 14
14313, 8 0.9



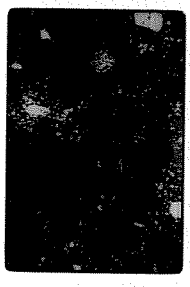
Vitrophyte - O₁ P₂ 4px
20.5 mod. 100% - P₂
hornfels also by

31, 14
14063, 26 T6.0



Faded layers in cleavage mat.

36, 14
14063, 28 T8.0



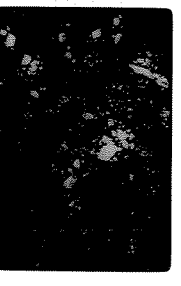
Same as 35, better

26, 14
14313, 8 0.9



Same as 25, better

32, 14
14063, 26 T6.0



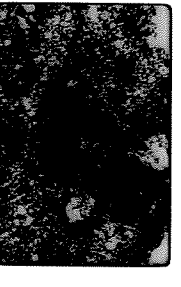
Same as 31, better

37, 14
14063, 28 ?



gem. veins

38, 14
14063, 23 T8.0



Prob. cleat (same as 31) of flow toward cleavage also by

1,15 JUN 1963
14063,2 E60



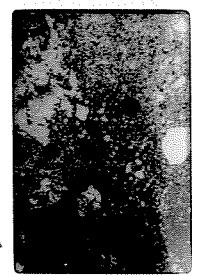
Nearly circular Die in Round Die

7,15 JUN 1963
14063,14 3.4



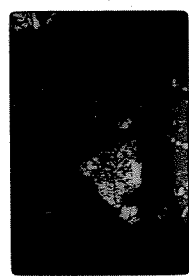
Die containing Die

3,15 JUN 1963
14063,25 E60



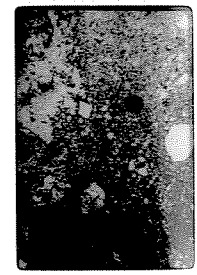
Reformulated Glass layer

8,15 JUN 1963
14063,14 3.4



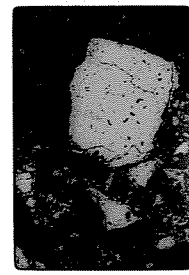
Sample no 7, unknown

4,15 JUN 1963
14063,25 E60



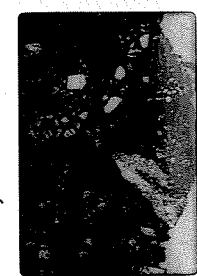
Sample no 3

9,15 JUN 1963
14063,23 2.2



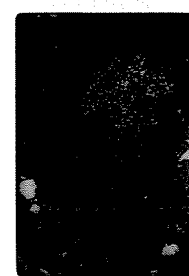
Broken Die containing Die both parts recovered

5,15 JUN 1963
14063,26 3.4



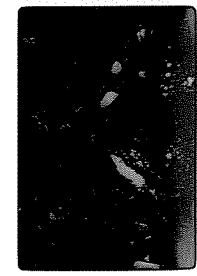
Glass layer about 1/4" from surface, piece of die fragment broken by shear cleavage

10,15 JUN 1963
14063,23 2.2



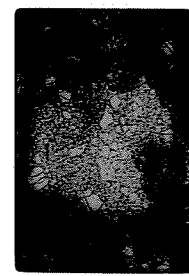
Sample no 9, unknown

6,15 JUN 1963
14063,26 3.4



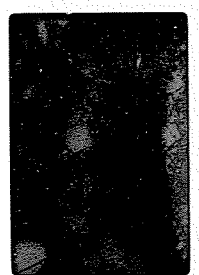
Sample no 5, unknown

11,15 JUN 1963
14063,23 2.2



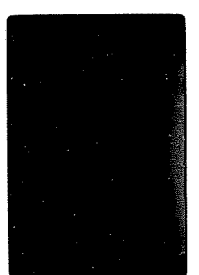
Die in Die part of large layer with die fragment of Die by Die

12,15 JUN 1963
14063,24 0.9



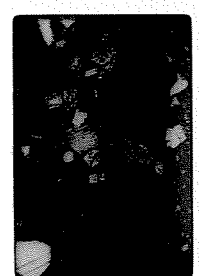
Die in Die, reformulated glass

17,15 JUN 1963
14063,28 D.6



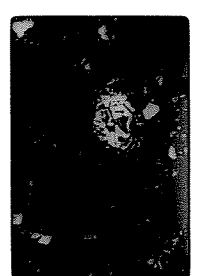
Sample with unknown texture

13,15 JUN 1963
14063,24 0.9



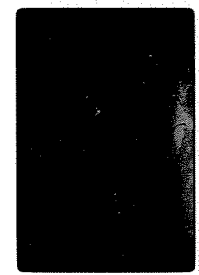
Sample no 12, unknown

19,15 JUN 1963
14063,26 3.4



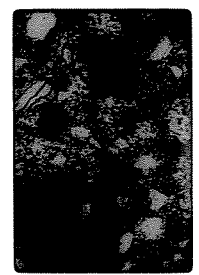
Sample with unknown texture

14,15 JUN 1963
14063,28 0.9



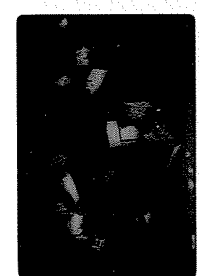
Die in Die, reformulated glass (?)

20,15 JUN 1963
14063,26 0.9



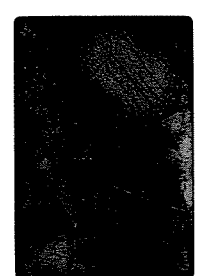
Deep grooves, die held in glass sheets

15,15 JUN 1963
14063,28 0.9



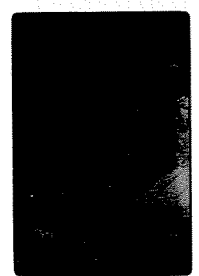
Sample no 14, unknown

25,15 JUN 1963
14063,25 0.9



Apollo 12-like plume area cpx-ilmenite layer over borophosphate

16,15 JUN 1963
14063,26 0.6



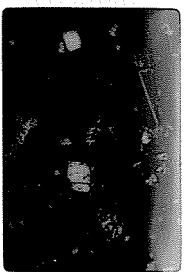
Di-pc Vitroplague

26, 15
14063, 25
0.9



Commonly terrestrial D/b
or C/b?

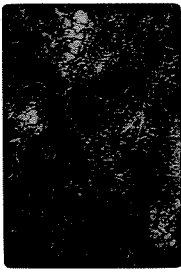
27, 15
14063, 25
0.9



Same as 26, 14063

32, 15
14307, 44
3.4

JUN 1952



Fine interwoven, 0.9%
rich, P-iron bearing
D/b. Phases.

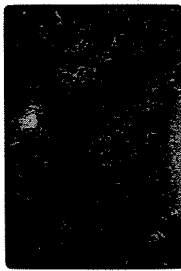
28, 15
~~14307, 44~~
14063, 25
0.9



9 raised D/b cleat
D/b

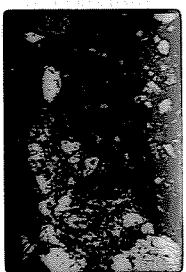
33, 15
14307, 49
3.4

JUN 1952



Same as 32 (see 11)

29, 15
14307, 46
0.9



D/b cleat containing coarse
P-iron (see cleat 27) and
a type D/b cleat

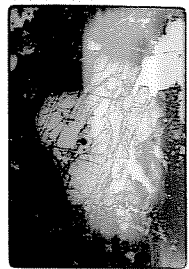
34, 15
14073, 7
3.4

JUN 1952



Ophiolite breccia

1, 16 JUN 1961
14308, 5 3.4



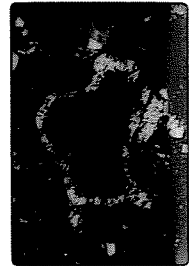
Marginally Polyagonal?
or hexad - PK Die pink

9, 16 JUN 1961
14321, 196 8.0



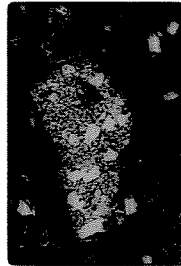
Same as 8, 16X10

2, 16 JUN 1961
14308, 5 3.4



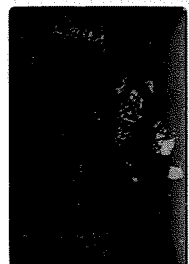
Same as 1, 16X10
Die pink

10, 16 JUN 1961
14321, 196 3.4



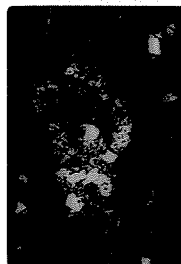
D16 clear in #8 line
D16 in it of bottom in a
D16 clear

5, 16 JUN 1961
14308, 5 2.2



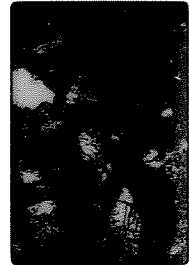
Same as 1, closer, less
Die pink

11, 16 JUN 1961
14321, 196 3.4



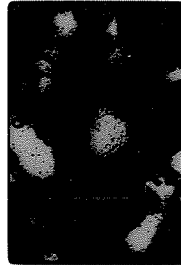
Same as 10, 16X10

7, 16 JUN 1961
14319, 5 0.9



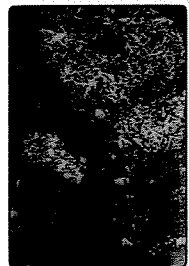
Small Die clear &
top. Small hex 112
matrix

12, 16 JUN 1961
14308, 3 0.6



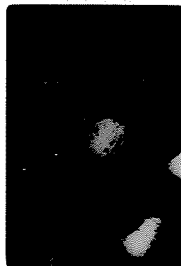
D1 -> PK + space
Small ol -> PK + sp

8, 16 JUN 1961
14321, 196 18mm



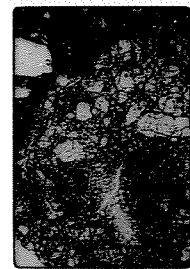
Large Small (0.53 pm. ol),
Small 310? at D16 matrix
D16 in it, in a D16

13, 16 JUN 1961
14308, 3 0.6



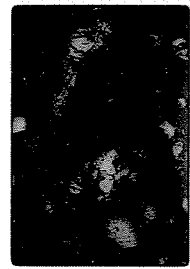
Same as 12, 16X10

14, 16 JUN 1961
14308, 4 2.7



Extracted, "small piece" of
crystal part to (relative)

19, 16 JUN 1961
14308, 6 0.7



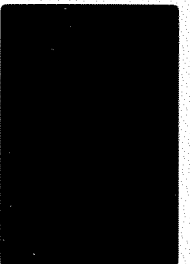
Same as 18, 16X10
Die pink

15, 16 JUN 1961
14308, 4 2.7



Same as 14, 16X10

16, 16 JUN 1961
14308, 4 0.6



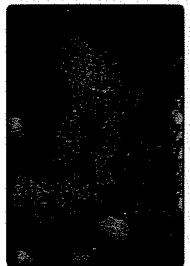
D1 -> PK + space

17, 16 JUN 1961
14308, 5 0.6



Oils -> PK + space

18, 16 JUN 1961
14308, 6 0.9



PK - polyagonal? or
extracted (small piece)
same as 18 (B-3)