

5,17 AUG 71 P8

14171,13 1.4



Coarse optically branched olive.

5,17 AUG 71 P8

14171,13 1.4



Specimen as 5 lens

11,17 AUG 71 P8

14171,13 1.4



Dark DL clear in light DL

5,17 AUG 71 P8

14306,54 1.4



Blackberry-like? central perforation in DL - porous-looking type in v. of intergl. Pk's fair good

AUG 71 P8

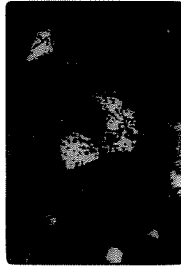
2,17 14171,13 1.4



Specimen as 1, 11 lens

8,17 AUG 71 P8

14171,13 0.7



Specimen as 7 lens

12,17 AUG 71 P8

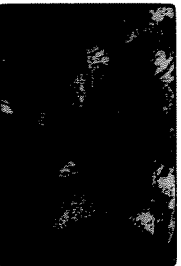
14171,13 1.4



DL (an optically branched olive - light DL) - narrow light DL

14,17 AUG 71 P8

14306,54 1.4



Specimen as 14 lens

AUG 71 P8

7,17 14171,13 0.7



Respect for olive in PK

13,17 AUG 71 P8

14171,13 1.4



Specimen as 13 lens

6,17 AUG 71 P8

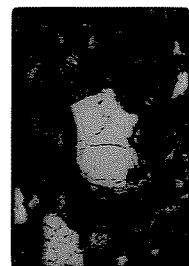
14306,17 2.7



Specimen as 12, clean of olive

AUG 71 P8

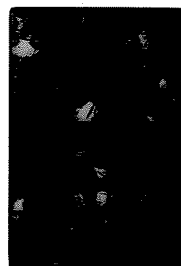
5,17 14171,13 1.4



Clear - 1200 lens. Olive 1200 lens - bands another

5,17 AUG 71 P8

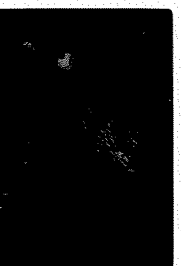
14171,13 1.4



Specimen as 9, 11 lens

15,17 AUG 71 P8

14306,54 0.57



Specimen as 14 lens

5,17 AUG 71 P8

14306,54 2



Specimen as 18 lens

17
14306, 574 3.2



Garnet in 20 uxn

17
14306, 60 0.9



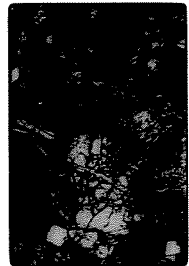
Garnet in 25, uxn

17
14306, 574 3.4



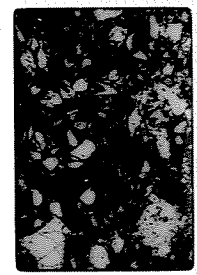
3
1 2 3 4
1 = minor ortho
2 = ortho in
3 = ortho in
4, D16 in D16 in D16

17
14306, 60 1.4



Realtz. Pt. pc clust in
Ultraphage

17
14306, 60 3.4



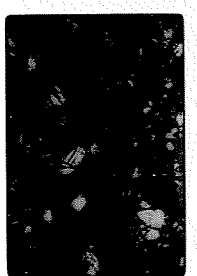
Old clust associated with
clumped pc + pr silicates
(D)

17
14306, 60 1.4



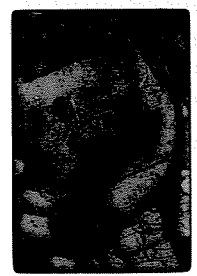
Uxn

17
14306, 60 3.4



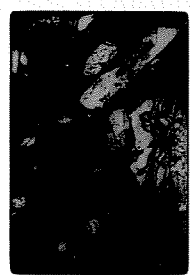
Garnet uxn

17
14306, 60 0.9



11 Felicité - garnet sp. like
12013. Note broken down
px

17
14306, 58 0.4



~~Silica polymorphic + K-feldspar?~~
~~in the matrix on granitic rocks~~
~~glaucophanite + albite + actinolite~~

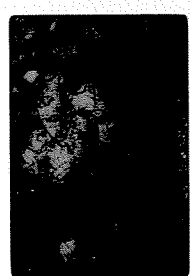
Garnet in 32

17
14306, 58 3.4



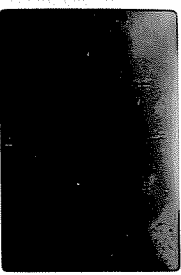
Silica polymorphic + K-feldspar?
in the matrix on granitic rocks
+ clpx + ill, fcs in 1. ff

17
14306, 58 3.4



Garnet in 34 uxn

2,18
14220,9 0.6



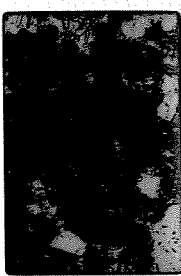
Q1(?) → PX + Spinel

7,18
14220,9 2.2



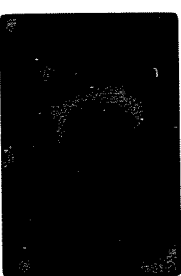
Same as 6 UXTM

3,18
14220,9 0.6



D1(?) → PX + Spinel

8,18
14220,9 0.6



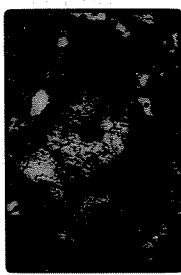
Q12 → PX traces of glass + PX?
nodules

4,18
14220,9 0.6



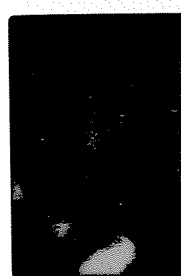
W/Albite? Ca in D1

9,18
14220,9 2.2



Pe-O1 microcline → O1 → "white"
PC → microcline. Note graininess in
px & hornbl on Al₂Si → quartz + spinel

5,18
14220,9 2.6



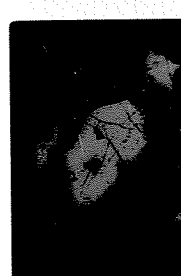
Same as 11 UXTM

10,18
14220,9 2.2



Same as 9 UXTM

6,18
14220,9 2.2



Microblastic - Polygone (px
Hornblende + quartz)
Q12 → glass + microcline, perovskite

11,18
14220,9 0.7



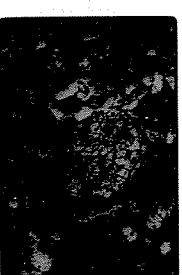
Clear up of O1 in #9 →
matrix appearance

12,18
14220,9 0.7



Same as 11, UXTM. Re-fict
D1

17,18
14220,9 2.2



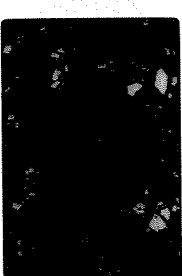
Large Qtz nod. px corona of
pottery melting zones in -
zone I + H1 clays

13,18
14220,9 2.2



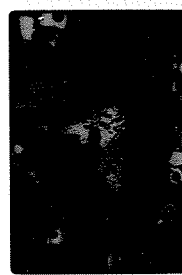
Probably melted clast. small
relicts of felds? or quartz in glass
no felds. No trace of felds -
banded microcline - have melting
in place, not a
glass clast

18,18
14220,9 2.2



Same as 17 UXTM

14,18
14220,9 2.7



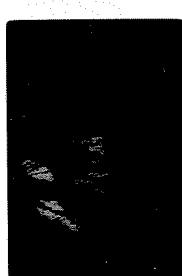
Same as 13, mag. clear.

15,18
14220,9 0.6



Felds "in the" zone, long
D1 relict from quartz + px

16,18
14220,9 0.6



Same as 15 UXTM

25, 18
14072, 14 3.4



Optic bundle at cerear
div.

25, 18
14312, 13 2.2



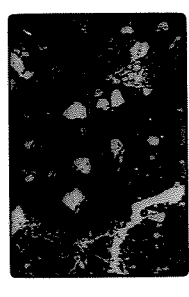
Same as 25 CERN

25, 18
14072, 14 3.4



Same as 21 CERN

25, 18
14312, 13 3.4



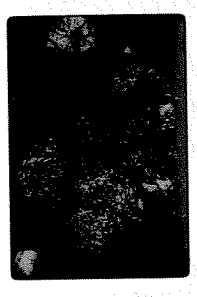
At. Dld cleat in dark Dld

25, 18
14312, 13 2.2



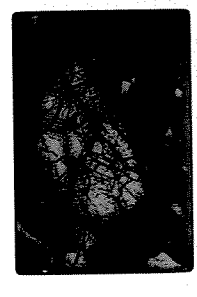
Spherical to hexil. 2 of pr
to. Dld in parting hexil. 2

25, 18
14312, 13 2.2



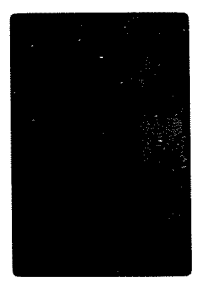
Same as 23 CERN

25, 18
14312, 13 2.2



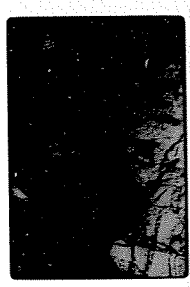
Sample at 14 20. using old -
corn bands at part of
hexil. 2

25, 18
14320, 6 0.9



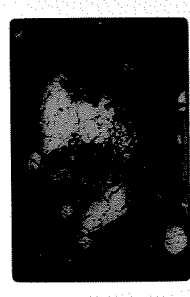
Close-up of 28

31, 18
14320, 6 0.9



Same as 30 CERN

32, 18
14320, 6 2.2



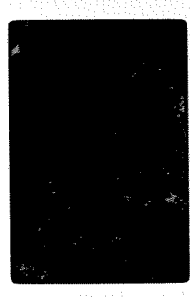
Re. cumulate? 3 CERN
com.

33, 18
14320, 6 2.2



Same as 32 CERN

34, 18
14320, 6 0.9



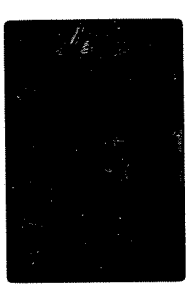
1.2 mm reacted? Oliv.
epine - note v. light CERN

35, 18
14320, 16 0.6



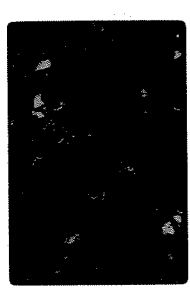
"Feltite"? cleat in Dld
cleat

25, 18
14320, 16 0.6



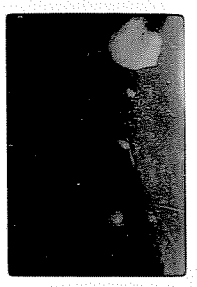
Same as 35 CERN

25, 18
14305, 11 3.4



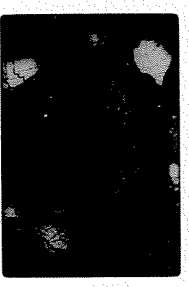
Partly melted seg. of
H-sph. 2 - 5? with segs.

1,19
14305,97 3.4



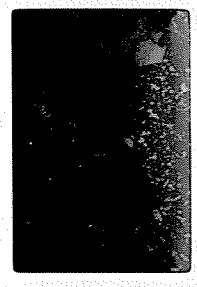
Substr. of bio clast -
See whole slide notes

6,19
14305,100 2.2



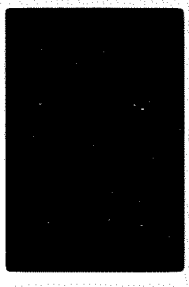
Same as 10

7,19
14305,97 3.4



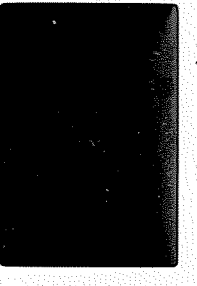
Same as 1

7,19
14305,100 0.9



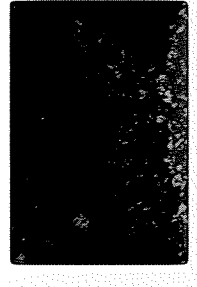
Same as 5

8,19
14305,97 2.2



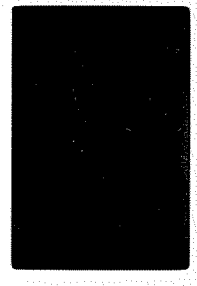
Substr. growth of bio from
lye pt - beneath bio mat.
on nucleus of grain

4,19
14305,97 2.2



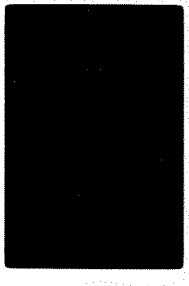
Same as 3

5,19
14305,100 2.2



Pla. on matrix developing
matrix

10,19
14305,100 3.4



Pla - even flow, partly
textured, not seen in?

11,19
14305,100 3.4



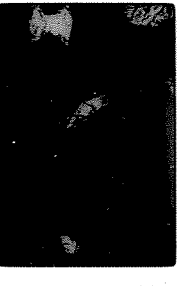
Same as 10

12,19
14305,101 3.4



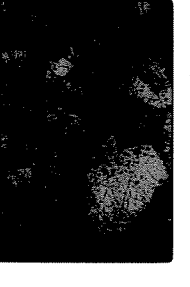
Pale brown glass + feldspar like
matrix clast? Matrix (textured?)
or?

13,19
14305,98 0.9



Opx periphyment 92%px
lamellae + blebs.

14,19
14305,100 2.2



Opx hornblende? Sic. Ue text.
in lye pt, note 13 note
pc as 20 read

15,19
14305,100 2.2



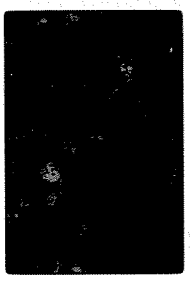
Same as 14

16,19
14305,102 2.7



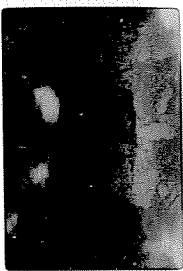
Graphite of 3 - k spots, 3 large
big one has 3-4 k's per grain

17,19
14305,102 2.7



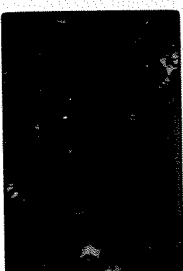
Same as 16

3,19
14305,102 0.4



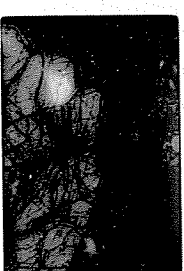
24 solid "Hyacinths" showing
partial film, PK vac. over
ex. at edge not inside

3,19
14305,102 0.4



Same as 24 LKN

3,19
14305,102 2.2



Slithead or porphyro-
blast

3,19
14315,8 3.4



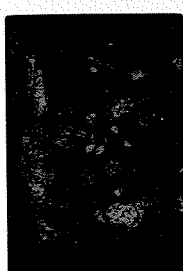
Same as 34 LKN

3,19
14305,102 0.4



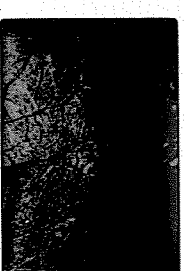
Same as 20 LKN

3,19
14305,102 2.2



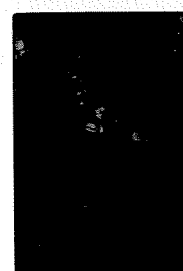
Mostly melted K-spar -
QZ: looking brown/less
colorless glass than white Kfs

3,19
14305,102 2.2



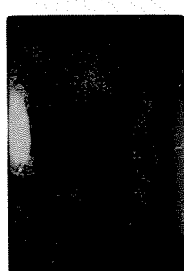
Same as 30 LKN

3,19
14305,102 2.2



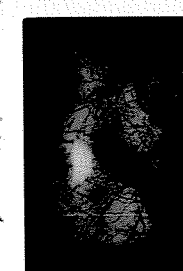
Same as 22 LKN

3,19
14314,9 3.4



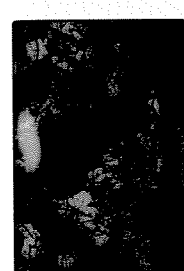
Re clean. Portem ex,
glass

3,19
14305,102 2.2



ex yellow dust

3,19
14314,9 3.4



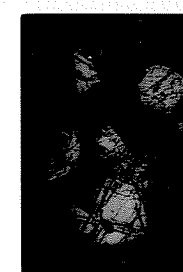
Same as 32 LKN

3,19
14305,102 0.4



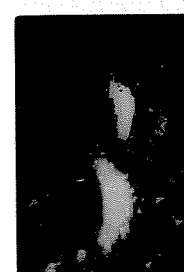
Edge of "Hyacinths" grain
become fusion

3,19
14305,102 2.2



Same as 28 LKN

3,19
14315,8 3.4



14 Pellet texture "Nite
brown dust. gran in
some pellets"

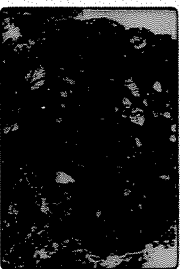
1, 20 AUG 71P2
1406, 48 0.9



Large spire on dark rim
of the base rim

6, 20 AUG 71P2

1406, 49 2.7



Clust 20, of, spire below
at necking, etc? - splen tra

2, 20 AUG 71P2
1406, 48 0.9



Old Dia? some Dia?

7, 20 AUG 71P2

1406, 49 2.7



Same as 6 text

3, 20 AUG 71P2
1406, 48 0.9



Same as 2 text

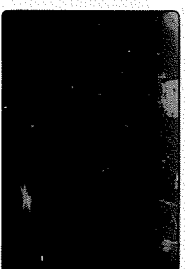
8, 20 AUG 71P2

1406, 49 3.4



Central, etc. yellow -
with brown gran

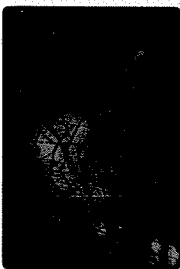
4, 20 AUG 71P2
1406, 48 0.9



Pearly, white, single
etc.

9, 20 AUG 71P2

1406, 49 3.4



Same as 8 text

5, 20 AUG 71P2
1406, 48 0.9



Same as 4, text

10, 20 AUG 71P2

1406, 49 2.7



Prostrate -> Dia
Note punct. by matrix

11, 20 AUG 71P2

1406, 49 2.7



Same as 10 text

12, 20 AUG 71P2

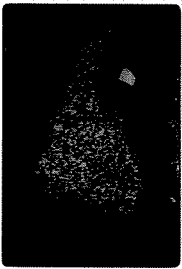
1406, 49 2.7



11 similar

13, 20 AUG 71P2

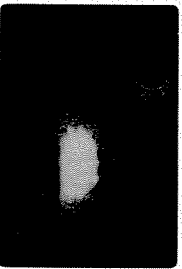
1406, 49 2.7



Same as 12 text

14, 20 AUG 71P2

1406, 50 0.7



11 similar, several opt.
cont. white patches

16, 20 AUG 71P2

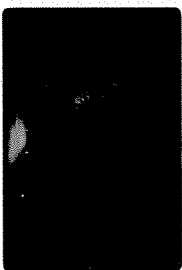
1406, 50 0.7



Opt - in process of budding

17, 20 AUG 71P2

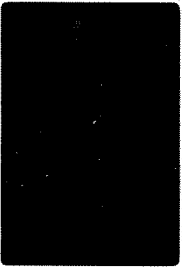
1406, 50 0.7



Same as 16 text

18, 20 AUG 71P2

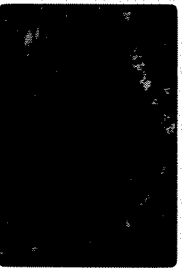
1406, 50 0.9



Large opt budding from
stem, segmented rim

19, 20 AUG 71P2

1406, 50 0.9



Same as 19 text

20, 20 AUG 71P2
14066, 50 2.7



Spherical PC's broken
w/ venous bag matrix, in
middle

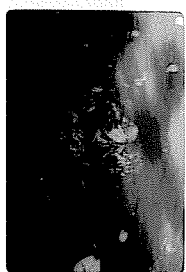
25, 20 AUG 71P2

14066, 51 3.4



Same as 24 (KX)

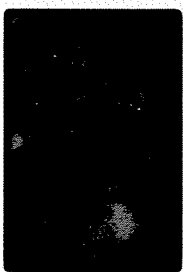
21, 20 AUG 71P2
14066, 50 2.7



Same as 20 (KX)

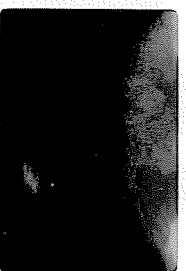
26, 20 AUG 71P2

14313, 58 0.9



Small DLD in Old in glassy
broth

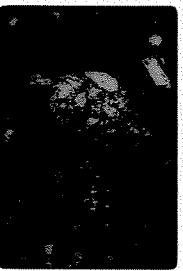
22, 20 AUG 71P2
14066, 50 0.7



Blebbistatinol, PC's in
K-sphere (S) - small form

27, 20 AUG 71P2

14313, 58 2.2



Clust 1/2 DLD, 1/2 DIB

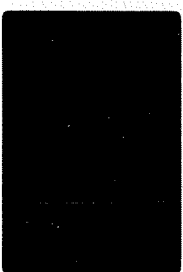
23, 20 AUG 71P2
14066, 50 0.7



Same as 22 (KX)

28, 20 AUG 71P2

14313, 58 0.7



Colony on 112 PC + spgs
w/ bag matrix PC's?

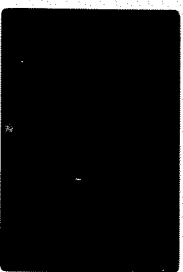
24, 20 AUG 71P2
14066, 51 3.4



2 "Dumet's" 1st large
1st Cl. 2nd, both in 1st
Same DLD (KX)

29, 20 AUG 71P2

14313, 58 0.7



Same as 24 (KX)

30, 20 AUG 71P2
14220, 10 0.6



Good spec. run on
spiral

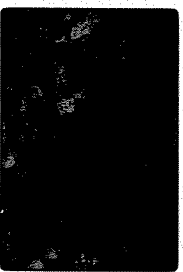
35, 20 AUG 71P2

14315, 12 3.4



Gen. texture

31, 20 AUG 71P2
14220, 10 0.9



Winturgen "broth" on
above alignment of

36, 20 AUG 71P2

14315, 12 3.4



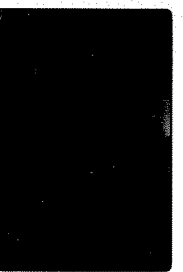
Same as 35 (KX)

32, 20 AUG 71P2
14220, 10 0.9



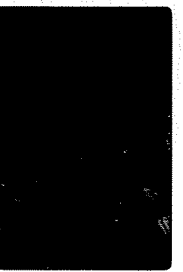
Same as 31 (KX)

33, 20 AUG 71P2
14315, 12 0.9



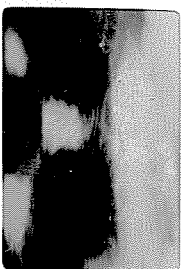
Clust on 2nd row of
spores

34, 20 AUG 71P2
14315, 12 0.9



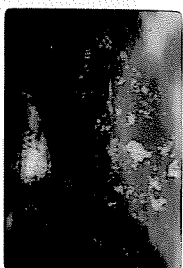
Same as 33 (KX)

1, 21 SEP 71P8
14305/91 3.4



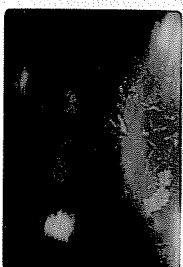
D16 22. V. leuconis exsicc.
pc; 10px in qm

2, 21 SEP 71P8
14305/91 3.4



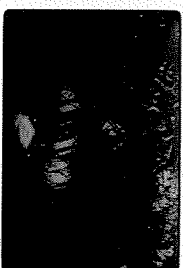
Same as 1 exrn

3, 21 SEP 71P8
14305/91 3.4



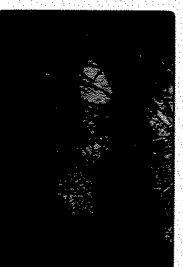
V. intermedium, bas. 20.
Nogged also 20. d. from
herbarium

4, 21 SEP 71P8
14305/91 3.4



Same as 3 exrn

5, 21 SEP 71P8
14305/91 3.7



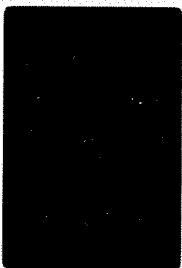
Same as 3 closer

6, 21 SEP 71P8
14305/91 2.7



Same as 5 exrn

7, 21 SEP 71P8
14305/91 3.4



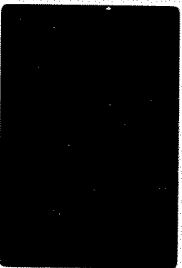
Small white → Dlx in
sheet → break up of
lamellae to lams

8, 21 SEP 71P8
14305/91 3.4



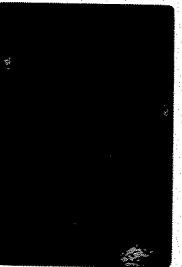
Same as 7 exrn

9, 21 SEP 71P8
14305/91 2.7



Close of 7 showing
break up to lams

10, 21 SEP 71P8
14305/91 2.7



Same as 9 exrn

11, 21 SEP 71P8
14305/91 0.9



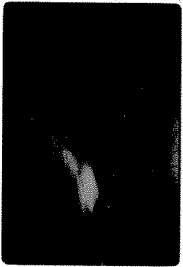
Close of 9

12, 21 SEP 71P8
14305/91 0.9



Same as 11 exrn

13, 21 SEP 71P8
14305/91 2.7



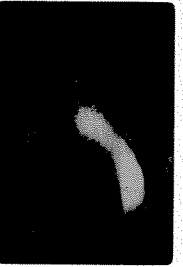
V. trichites, also conical
no trichites?; perithecia

14, 21 SEP 71P8
14305/91 2.7



Same as 13 exrn

15, 21 SEP 71P8
14305/91 2.7



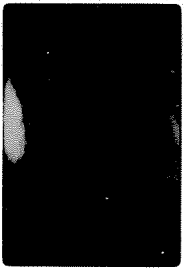
D16 22. Pseudoclastic spx.
w. leuc. lam.

16, 21 SEP 71P8
14305/91 2.7



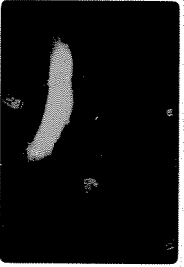
Same as 15, exrn

17, 21 SEP 71P8
14305/91 0.9



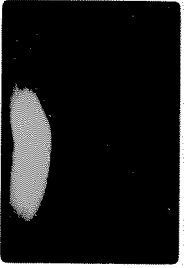
Same as 15 closer

18, 21 SEP 71P8
14305/91 0.9



Same as 17 exrn

19, 21 SEP 71P8
14305/91 3.4



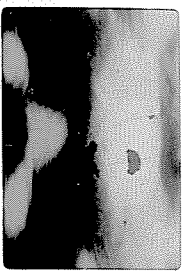
Nontrichites. Micro-
filid, conical

20, 21 SEP 71P8
14305/91 3.4



Same as 19 exrn

21, 21 SEP 71P8
1430941 0.9



Old subsegment of PC
possibly pocket bag, 4pc's, 1pc
found 11 subsegment

26, 21 SEP 71P8
14318, 44 3.4



Common brown pellets
implants?

21, 21 SEP 71P8
1430941 0.9



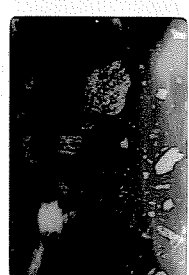
Same as 21 LCRN

21, 21 SEP 71P8
14318, 44 0.9



Concentric Glass that in
brown gleamy? Pellets
some like 11 barrels

21, 21 SEP 71P8
14318, 44 3.4



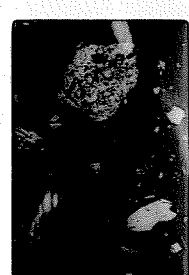
Partly melted "granite"
in DLD

26, 21 SEP 71P8
14318, 44 2.7



Dld pellets

21, 21 SEP 71P8
14315, 44 2.7



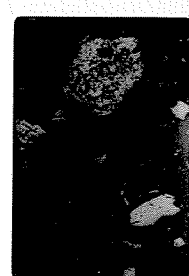
Same as 23 LCRN

26, 21 SEP 71P8
14318, 44 3.4



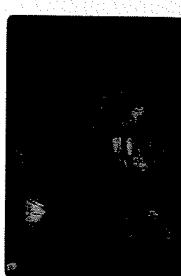
Dld no hint of fragments
source of V9b

26, 21 SEP 71P8
14318, 44 2.7



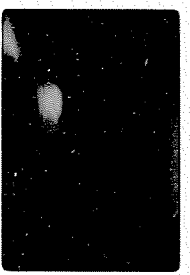
Same as 24

30, 21 SEP 71P8
14318, 44 3.4



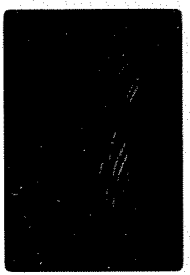
Same as 28 LCRN

31, 21 SEP 71P8
14318, 44 3.4



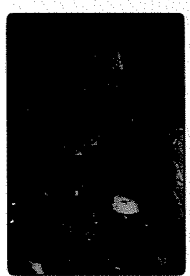
Felds, plagioclase, glass bands
bas clast, pct. raised

30, 21 SEP 71P8
14303, 52 0.9



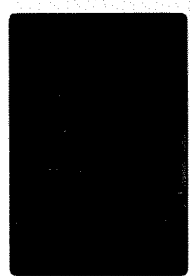
Same as 35 LCRN

32, 21 SEP 71P8
14318, 44 3.4



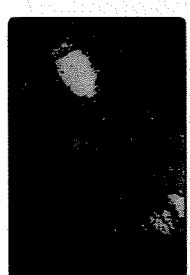
Same as 31 LCRN

31, 21 SEP 71P8
14303, 52 2.2



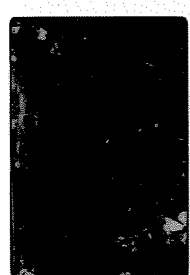
"granite", partly fused
in DLD clast

33, 21 SEP 71P8
14318, 44 3.4



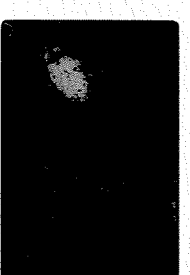
Opt. bas in oval pellet
from DLD

33, 21 SEP 71P8
14303, 52 2.2



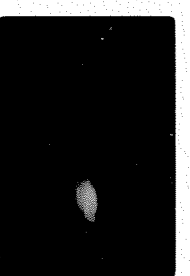
Same as 37, LCRN

34, 21 SEP 71P8
14318, 44 3.4



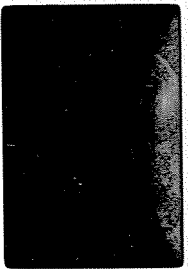
Same as 33 LCRN

35, 21 SEP 71P8
14303, 52 0.9



Felds to left edge, 1100px
px? betw. clasts

1,22
14318,52 0.9



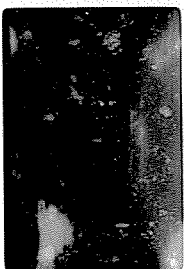
D16 in D1d. Strongest
near vice in D1b.

2,22
14318,52 0.9



Same as 1 LIXU

3,22
14318,44 3.4



Boundary with cleat
(morphologic cleats, opgs in
dark)

4,22
14318,45 3.4



Cleat in D1b (very) interesting
cut of D1b-D1d - which
is Y change?

5,22
14318,45 3.4



Same as 4 LIXU

6,22
14318,45 0.7



Shoalier, vertical pe clear
white

7,22
14318,45 0.7



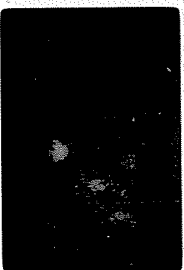
Same as 6 LIXU

8,22
14318,47 2.2



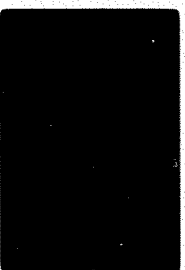
Colorless glaucous from partial
fusion of partly vertical
cleat structures

9,22
14318,47 2.2



Same as 8 LIXU

10,22
14318,47 2.2



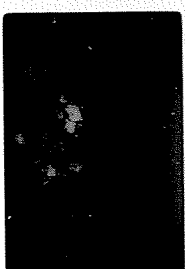
Same as 8

11,22
14318,47 2.7



Opq 'galaxies' - point for
knobs of pe to nearby.

12,22
14318,47 2.7



Same as 11 LIXU

13,22
14318,47 3.4



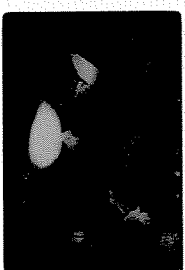
Galaxy -> D1b

14,22
14318,47 3.4



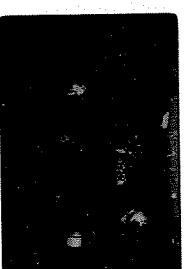
Same as 13 LIXU

15,22
14318,47 2.7



Cleat in contact D1d-D1b

16,22
14318,47 2.7



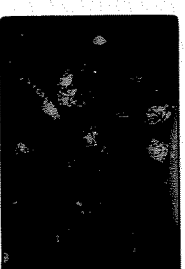
Same as 15 LIXU

17,22
14318,47 3.4



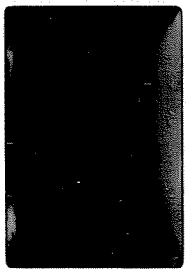
D1d cleat tail, several cm long
along cleat -> 'shards'

18,22
14318,47 3.4



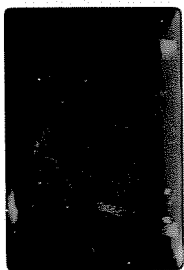
Same as 17 LIXU

1,23 * SEP 71PI
14314,9 0.9



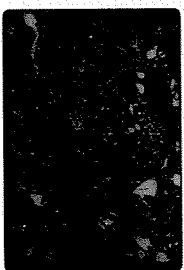
Re consider *Winklerii*-
Kasper (low small parts) + give
preference to *Sieve* (if possible)

2,23 SEP 71PI
14314,9 0.9



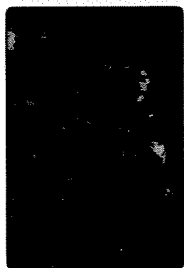
Same as 1 U.K.W.

3,23 SEP 71PI
14315,12 3.4



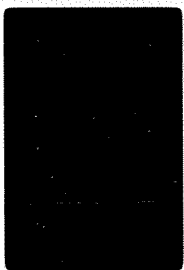
Clear. Voids "pelle" for *Sieve*
(fine glassy
brown A15) intergranular.

4,23 SEP 71PI
14315,12 3.4



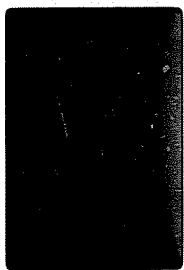
Same as 2 U.K.W.

5,23 SEP 71PI
14315,12 0.9



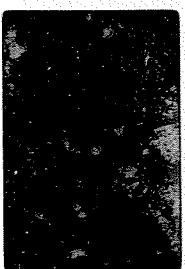
Broken round pellet - no
intergranular core

6,23 SEP 71PI
14314,9 3.4



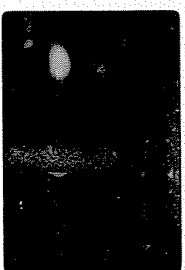
Big single circ. in space?
could be a real *Sieve*. bands

11,23 SEP 71PI
14301,87 2.2



Picture showing range of
colors of fine fuchsite like

12,23 SEP 71PI
14301,87 3.4



Broken clast of glassy
W bands

13,23 SEP 71PI
14313,48 2.2



Fine-grained (W) *perovskite*-
small *actinolite* glaucophane
in it

14,23 SEP 71PI
14313,48 2.2



Same as 13 U.K.W.

15,23 SEP 71PI
14313,48 2.2



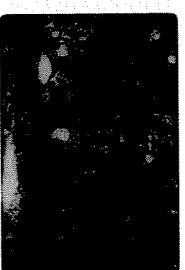
D16. 51. *actinolite* from 13

6,23 SEP 71PI
14313,48 2.2



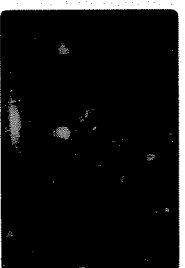
Same as 15 U.K.W.

7,23 SEP 71PI
14313,48 2.2



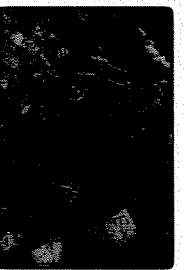
D16. *actinolite* from 15

10,23 SEP 71PI
14313,48 2.2



Same as 17 U.K.W.

10,23 SEP 71PI
14301,87 0.9



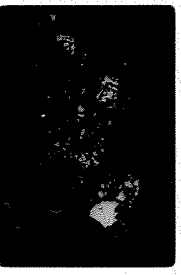
Pellet as: old core of
concentric *perovskite*

19, 23 SEP 71 P1
14313, 148 2.2



Still covered by D16

20, 23 SEP 71 P1
14313, 148 2.2



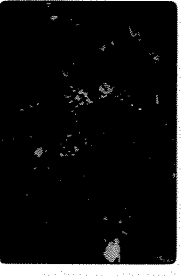
Same as 23, 148 N

23, 23 SEP 71 P1
14313, 148 2.2



Same as 19 148 N

25, 23 SEP 71 P1
14314, 12 3.4



Washed with 100% ethanol
3x then covered with
oil in hexane

24, 23 SEP 71 P1
14313, 148 2.2



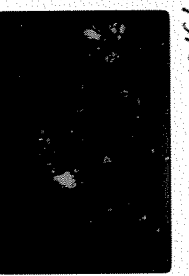
Covered D16 with ethanol.
pele flu?

26, 23 SEP 71 P1
14314, 12 2.2



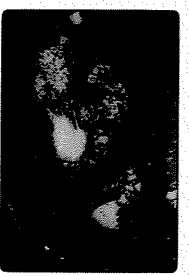
Same as 25, cleaner

22, 23 SEP 71 P1
14313, 148 2.2



Same as 21 148 N

23, 23 SEP 71 P1
14313, 148 2.2



Covered D16, ethanol pe
+ analyzed polypropylene in
methanol then

28, 23 SEP 71 P1
14313, 55 2.2



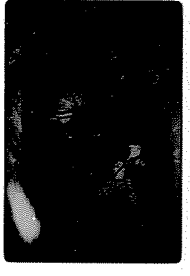
Spine of glass + oil -
probably removed

29, 23 SEP 71 P1
14313, 55 2.2



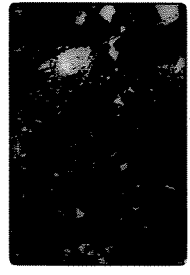
Same as 28, 148 N

30, 23 SEP 71 P1
14313, 56 0.9



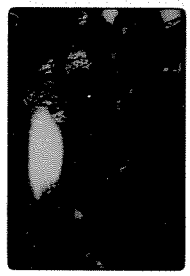
Partly washed sample
back to the 13, 115

31, 23 SEP 71 P1
14306, 65 3.4



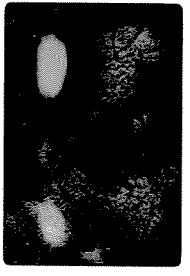
4 plates in Charles D16
about same as by de la
D16

32, 23 SEP 71 P1
14306, 65 3.4



Same as 31 148 N

33, 23 SEP 71 P1
14306, 65 0.9



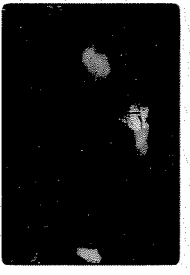
Found K spores also? -
false site - checked again

3, 25-1 DEC 1973
14306, 66 0.9



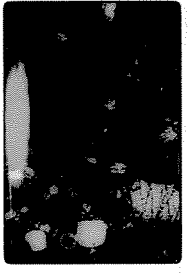
Same as 33-1

29, 23 SEP 71 P1
14306, 65 0.9



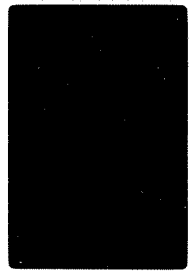
Same as 33, 148 N

26, 23 SEP 71 P1
14306, 65 2.2



Same as 35 148 N

1, 25-1 DEC 1973
14306, 56 0.9

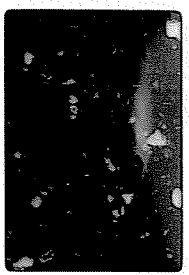


Partly washed pe

SEP 1961

2.2

1,24
1430741

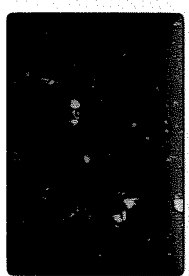


Well rounded D4's

SEP 1961

2.2

2,24
1430741

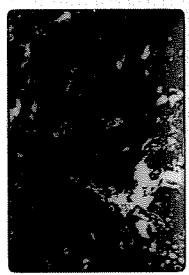


Same as 1, with N

SEP 1961

3.4

3,24
1430741



Rounded pieces of Fe in vac. glass

SEP 1961

2.2

4,24
143074

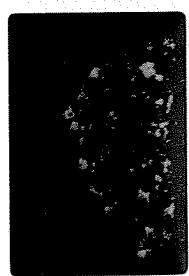


Skeletal hornfels - p. 47
metakyanite

SEP 1961

2.2

5,24
143074



Same as 4 with N

SEP 1961

3.4

5,24
143074



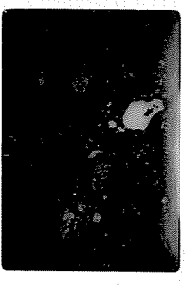
Rounded pieces of Fe in vac. glass

Note #2 on

see Apollo 15-1

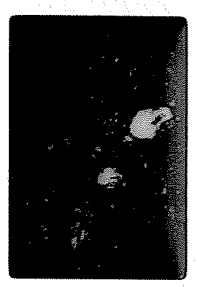
Pis

1, 25 NOV 11 8.2
14318/44



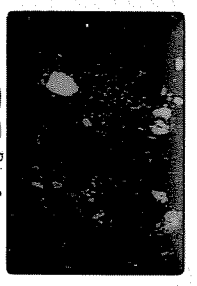
D1, D2, B1, B2, C1, C2
Compound
clay in
glassy brick.

2, 25 NOV 11 8.2
14318/44



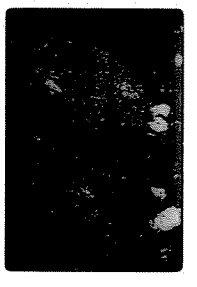
Spore ca 1 UCN

3, 25 NOV 11 5.3
14318/44



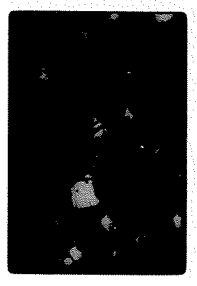
B1, B2, B3, B4, B5, B6, B7, B8, B9, B10, B11, B12, B13, B14, B15, B16, B17, B18, B19, B20, B21, B22, B23, B24, B25, B26, B27, B28, B29, B30, B31, B32, B33, B34, B35, B36, B37, B38, B39, B40, B41, B42, B43, B44, B45, B46, B47, B48, B49, B50, B51, B52, B53, B54, B55, B56, B57, B58, B59, B60, B61, B62, B63, B64, B65, B66, B67, B68, B69, B70, B71, B72, B73, B74, B75, B76, B77, B78, B79, B80, B81, B82, B83, B84, B85, B86, B87, B88, B89, B90, B91, B92, B93, B94, B95, B96, B97, B98, B99, B100

4, 25 NOV 11 5.3
14318/44



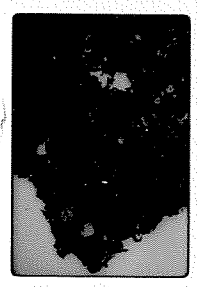
Spore ca 3, UCN

5, 25 NOV 11 8.2
14306/65



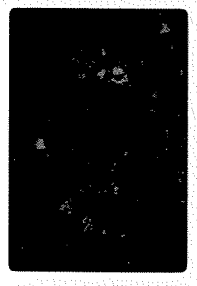
10

7, 25 NOV 11 6.6
14315/7



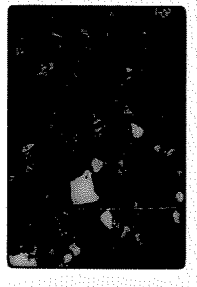
D1, D2, D3, D4, D5, D6, D7, D8, D9, D10, D11, D12, D13, D14, D15, D16, D17, D18, D19, D20, D21, D22, D23, D24, D25, D26, D27, D28, D29, D30, D31, D32, D33, D34, D35, D36, D37, D38, D39, D40, D41, D42, D43, D44, D45, D46, D47, D48, D49, D50, D51, D52, D53, D54, D55, D56, D57, D58, D59, D60, D61, D62, D63, D64, D65, D66, D67, D68, D69, D70, D71, D72, D73, D74, D75, D76, D77, D78, D79, D80, D81, D82, D83, D84, D85, D86, D87, D88, D89, D90, D91, D92, D93, D94, D95, D96, D97, D98, D99, D100

8, 25 NOV 11 6.6
14315/7

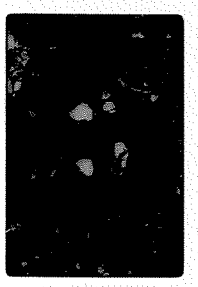


Spore ca 7, UCN

9, 25 NOV 11 2.2
14315/7

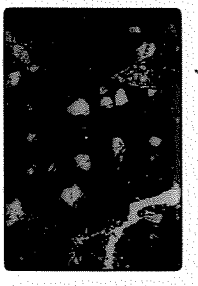


12, 25 NOV 11 3.4
14312, 13



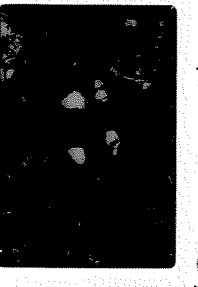
Spore ca 11, UCN

13, 25 NOV 11 3.4
14312, 13



D1, D2, D3, D4, D5, D6, D7, D8, D9, D10, D11, D12, D13, D14, D15, D16, D17, D18, D19, D20, D21, D22, D23, D24, D25, D26, D27, D28, D29, D30, D31, D32, D33, D34, D35, D36, D37, D38, D39, D40, D41, D42, D43, D44, D45, D46, D47, D48, D49, D50, D51, D52, D53, D54, D55, D56, D57, D58, D59, D60, D61, D62, D63, D64, D65, D66, D67, D68, D69, D70, D71, D72, D73, D74, D75, D76, D77, D78, D79, D80, D81, D82, D83, D84, D85, D86, D87, D88, D89, D90, D91, D92, D93, D94, D95, D96, D97, D98, D99, D100

14, 25 NOV 11 3.4
14312, 13



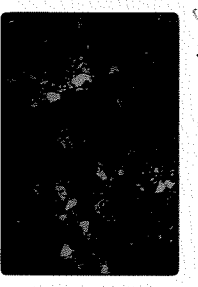
Spore ca 13 UCN

15, 25 NOV 11 8.2
14306, 65



C1, C2, C3, C4, C5, C6, C7, C8, C9, C10, C11, C12, C13, C14, C15, C16, C17, C18, C19, C20, C21, C22, C23, C24, C25, C26, C27, C28, C29, C30, C31, C32, C33, C34, C35, C36, C37, C38, C39, C40, C41, C42, C43, C44, C45, C46, C47, C48, C49, C50, C51, C52, C53, C54, C55, C56, C57, C58, C59, C60, C61, C62, C63, C64, C65, C66, C67, C68, C69, C70, C71, C72, C73, C74, C75, C76, C77, C78, C79, C80, C81, C82, C83, C84, C85, C86, C87, C88, C89, C90, C91, C92, C93, C94, C95, C96, C97, C98, C99, C100

17, 25 NOV 11 5.3
14306, 65



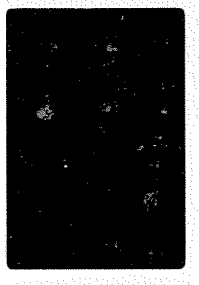
D1, D2, D3, D4, D5, D6, D7, D8, D9, D10, D11, D12, D13, D14, D15, D16, D17, D18, D19, D20, D21, D22, D23, D24, D25, D26, D27, D28, D29, D30, D31, D32, D33, D34, D35, D36, D37, D38, D39, D40, D41, D42, D43, D44, D45, D46, D47, D48, D49, D50, D51, D52, D53, D54, D55, D56, D57, D58, D59, D60, D61, D62, D63, D64, D65, D66, D67, D68, D69, D70, D71, D72, D73, D74, D75, D76, D77, D78, D79, D80, D81, D82, D83, D84, D85, D86, D87, D88, D89, D90, D91, D92, D93, D94, D95, D96, D97, D98, D99, D100

18, 25 NOV 11 5.3
14306, 65



Spore ca 17, UCN

16, 25 NOV 11 8.2
14306, 65



Spore ca 15 UCN

19, 25 NOV 71 8-2



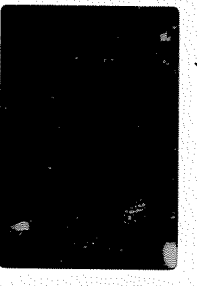
14306, 65
D1, D2, D3, D4, D5

24, 25 NOV 71 3-4



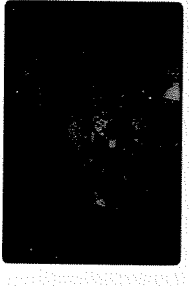
Specimen no 23 LKXN

20, 25 NOV 71 8-2



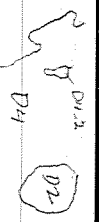
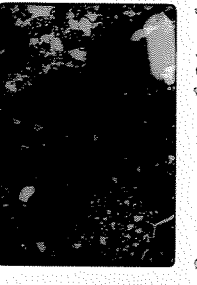
Specimen no 19 LKXN

25, 25 NOV 71 5-3

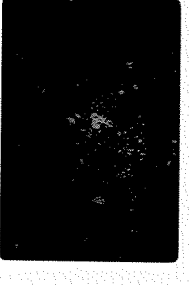


14306, 65

21, 25 NOV 71 3-4

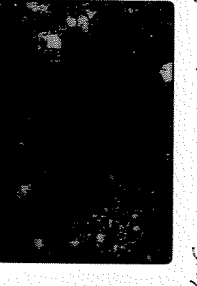


25, 25 NOV 71 5-3



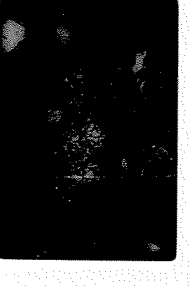
Specimen no 25, LKXN

22, 25 NOV 71 3-4



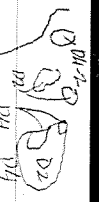
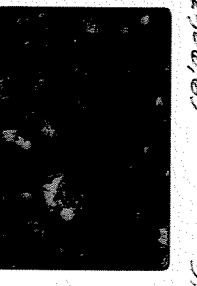
Specimen no 21 LKXN

21, 25 NOV 71 5-3

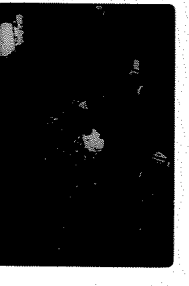


14303, 52

23, 25 NOV 71 3-4



25, 25 NOV 71 5-3



Specimen no 27 LKXN
since reac. w/ red man - heat.
This prep's trace before heat -

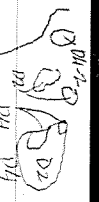
14303, 52

25, 25 NOV 71 R-2
14305

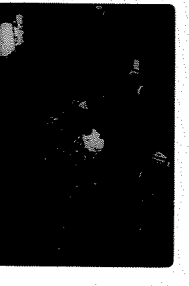


Specimen no 33 LKXN

30, 25 NOV 71 R-2



30, 25 NOV 71 R-2



14305