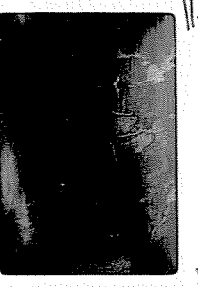


2,22 (15)
14267

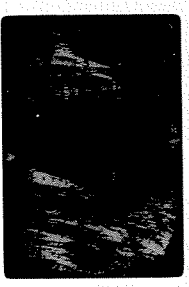


3.4

thin to in 2 dB
clast

Apollite "Hertzbergite"
of Apollite's in purity
of well 112 clino chondrite

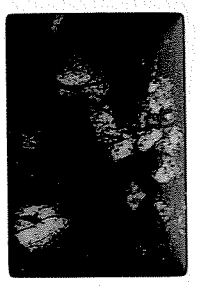
2,22 (15)
14267



0.9

Same as 12

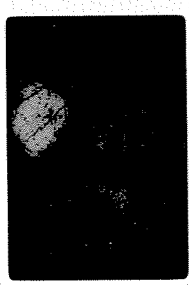
2,22 (15)
14267



3.4

Same as 8 UXA

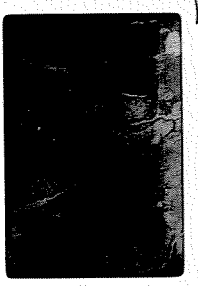
2,22 (15)
14267



2.2

"Hertzbergite" + Sph
purity well 112 Oliv

2,22 (15)
14267

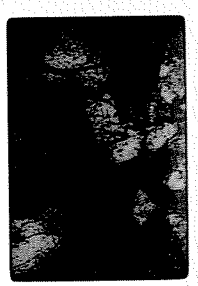


2.7

Same as 8 clasts
Apollite Hertzbergite - well 112
dof Opx -> clino chondrite

2,22 (15)
14267

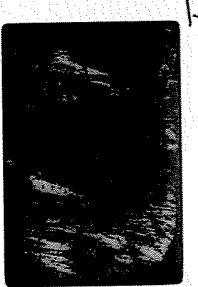
2,22 (15)
14267



2.7

Same as 10 UXA

2,22 (15)
14267



0.9

UXA clino chondrite
in bulk bands in Opx

141313

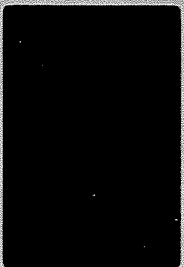
Note about abundant layers



F2

140822

Note layers



F3

25, 14

14063, 28

JUN 1968

2.2



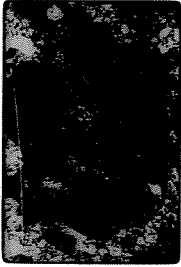
Clust of Reed - layers
Died - dead, dark & it
was a Dia 11 mic clust

27

14306, 51

JUN 1968

2.2



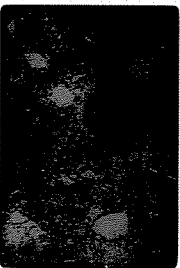
Clust of alga-like material.
Foliate clust of bacteria
OPFs at one end

12, 13

14082, 11

JUN 1968

3.4



Cont of layers, 4 layers
common

13, 13

14082, 11

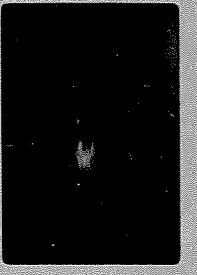
JUN 1968

3.4



Same as 12 seen

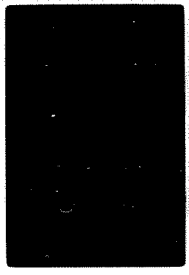
14053



Slits

F1

14307 F2



SPILL DO 9

28, 1 APR 1968

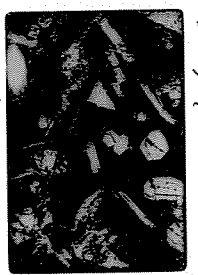
14053, 6 3.4mm



Spine on 27 seen C2

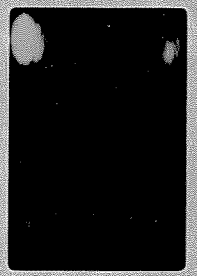
12, 5 APR 1968

14301, 14 0.9mm



Vitroplaque clear-pe, O1, P1? C5

14306



F4

21, 1 APR 1968

14053, 6 3.4mm

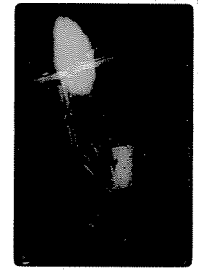


Seboph. broad

C2

34, 3 APR 1968

14301, 13 0.9mm



Spine on 33 seen C5

20, 9

14301, 28 0.9mm



PC, Ope. R's. no. w. little interst. + glass C7

7, 6 APR 1968

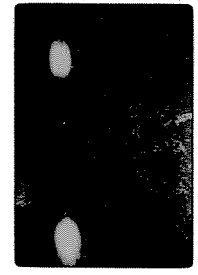
14310, 26 3.4mm



Normal 310 texture C1

31, 15 JUN 1968

14307, 47 0.9



Spine on 30 seen C4

13, 5 APR 1968

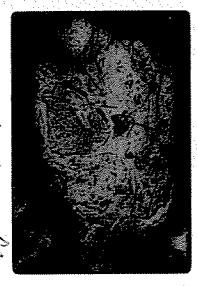
14301, 14 0.9mm



PC, Olio, v. opt's C4

11, 4 APR 1968

14301, 14 0.9mm



Glazing clear w. Spine 0.9mm A-1

30, 15 JUN 1968

14307, 47 0.9



Spine on 12 seen C5

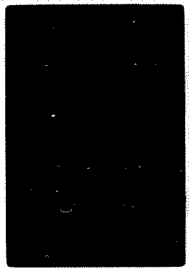
13, 5 APR 1968

14301, 14 0.9mm



Spine on 12 seen C5

14307 F2



SPILL DO 9

28, 1 APR 1968

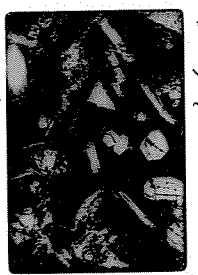
14053, 6 3.4mm



Spine on 27 seen C2

12, 5 APR 1968

14301, 14 0.9mm



Vitroplaque clear-pe, O1, P1? C5

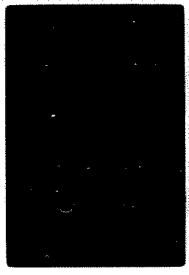
14053



Slits

F1

14307 F2



SPILL DO 9

28, 1 APR 1968

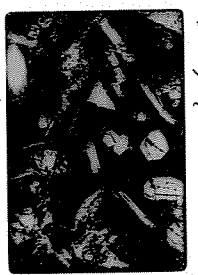
14053, 6 3.4mm



Spine on 27 seen C2

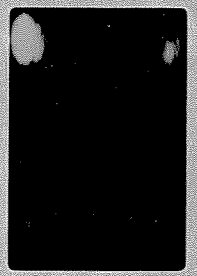
12, 5 APR 1968

14301, 14 0.9mm



Vitroplaque clear-pe, O1, P1? C5

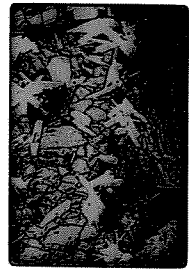
14306



F4

21, 1 APR 1968

14053, 6 3.4mm

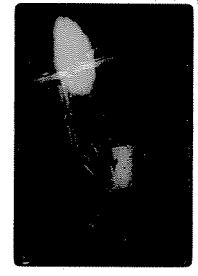


Seboph. broad

C2

34, 3 APR 1968

14301, 13 0.9mm



Spine on 33 seen C5

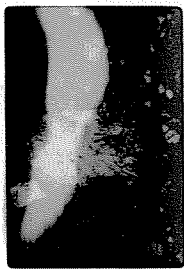
20, 9

14301, 28 0.9mm



PC, Ope. R's. no. w. little interst. + glass C7

18
14320,6 3.4



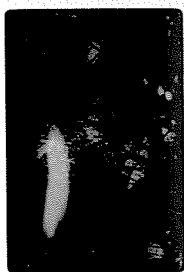
Small Ruffled ca. tapers fr.
Partly ruffled. 11000x

0,9
14321,6



Close up of St. Mart
Diameter of spines 11 bands
align. of spines M3003 Dia

18
14320,6 3.4



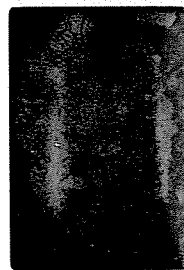
Spines as 28, UCR

2,5
14301,6 0.9mm



Spines ruffled, ruffled per 3
with type 3 recur Dia

18
14082,7 0.9mm



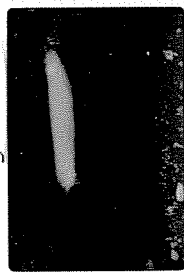
Type 1 clast, ruffled.

2,5
14301,6 0.9mm



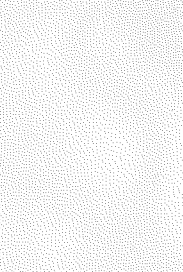
Spines as 20 UCR
Dia

18
14082,7 0.9mm



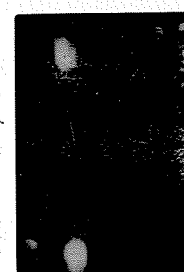
Spines as 31 UCR

0,9
14321,6 2.0mm



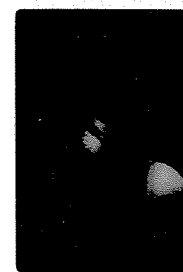
Coenocytic, well 2. Type 1
Note granular texture
Dissolve behind horizon

18
14321,6 2.2mm



Banded type 1 - heavily
due to obliquity of spines
of 51.2? may not be the same

0,9
14082,7 1.0mm



Spines as 5, UCR
Dia

30,12 JUN 7 1971
14082,10 0.4



Spines as 28 UCR
Dia

6,7 APR 1974
14304,14 0.9mm



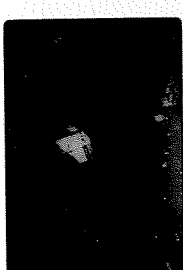
Sketched Dia 20 irregular
px, 10x details in type
3 clast Dia

22,2 APR 21 1972
14082,5 2.2mm



Broad clast; horn like
Dia

7,7 APR 1974
14304,14 0.9mm



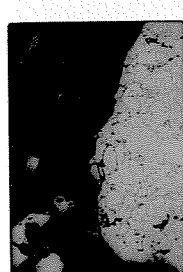
Spines as 6 UCR
Dia

22,2 APR 1972
14082,5 2.2mm



Spines as 22 UCR
Dia

0,9
14321,6 2.0mm



Spines as 9 UCR

10,9
14321,6 2.2mm



Spines as 9 UCR

26, 9
14321, 29



Source as 25 LK N
C7

26, 14
14321, 12



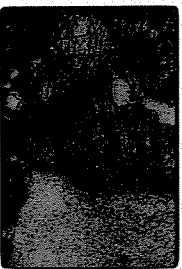
Realt? p-t rock. px
Cpx? including px blebs
C7

2, 27
14066, 46



Source as 1, LK N

26, 13
14053, 8



Staurolite "spinelite" note
Source as 24, also
small px's visible

3, 17
14171, 13



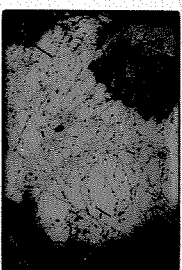
Pt clm, cpx perthite. (4
grains, 1 v. large)

26, 4
14321, 16



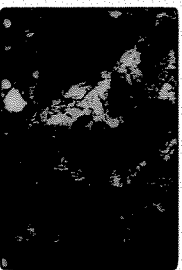
Source as 24 LK N
C7

15, 9
14321, 21



1) Gabbro contact
2) Gabbro "clast", not visible
by microscope
Also on C8B

27, 13
14053, 8



Source as 26, LK N

4, 17
14171, 13



Source as 3 LK N

31, 27
14321, 10



Pt clm, 20 perthite. perth.
H-open, cpx, cpx perth. perth.
ambled in a box px in cpx

16, 9
14321, 21



Source as 15, LK N Also on
C8B

30, 7
14321, 3



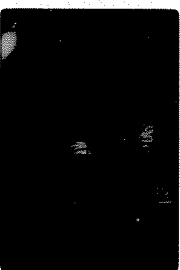
Realt? 2. May be cpx of
bordered by cpx 1-3, +
from mag. zone

3, 23
14321, 9



Source as 15 clinidine
px, Kspex interstit. Lpx?
+ brown cpxs

36, 25
14321, 10



Source as 31 LK N

1, 8
14321, 4



Note the clast's inclusion cpx
C8B

37, 7
14321, 3



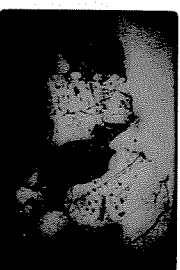
Source as 30 LK N

4, 23
14321, 9



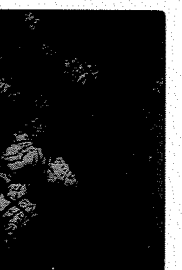
Source as 3 LK N

1, 27
14321, 46

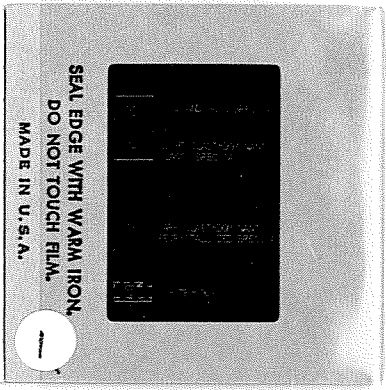


odd! px intergrow (cpx in cpx?)
too. Vaghet cpx? in gabbro
clast

2, 8
14321, 4



Source as 1 LK N
C8B



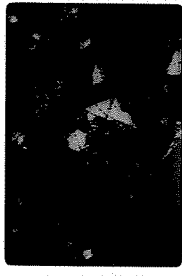
SEAL EDGE WITH WARM IRON.
DO NOT TOUCH FILM.
MADE IN U.S.A.

1



37,23 *
14306,65
APR 71 P1
2.2

Stem no 33, Feb Mar 7



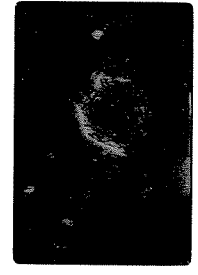
37,23
14306,65
SEP 81 P1
2.2

24 in D16 in D18
12



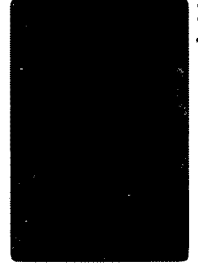
31,25
14320,10
NOV 71 P1
0.9

Terminated, Nov 11, 2.4 PM



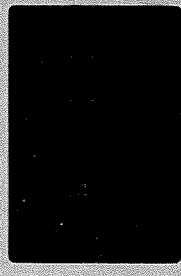
36 JUN 71 P1
1471K-1

33,10 36 2.55



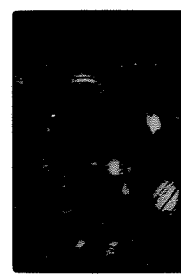
2 JUN 71 P4
1471K-2

34,3 49 0.22



SEAL EDGE WITH WARM IRON.
DO NOT TOUCH FILM.
MADE IN U.S.A.

80



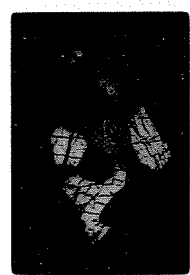
31,19
14305,102
0.7

Stem no 22 LKN 6



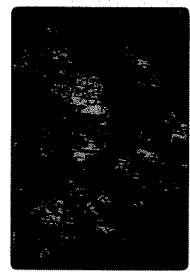
4,8
14306,14
APR 71 P2
2.8 none

11
Stem no 3 LKN



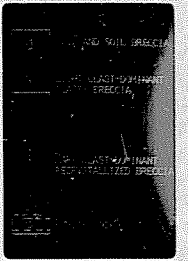
9,19
14305,100
NOV 71 P1
2.2

Stem no 5 LKN



21,25
14320,10
NOV 71 P1
0.9

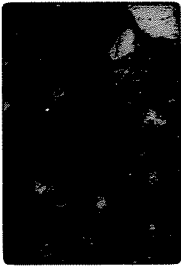
Stem no 31 LKN



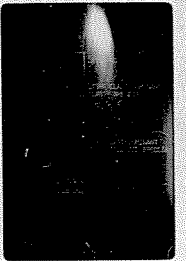
SEAL EDGE WITH WARM IRON.
DO NOT TOUCH FILM.
MADE IN U.S.A.

3512 JUN 1971

14082,10 0.32



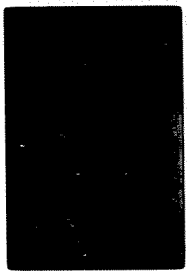
Same as 31, 4x10



SEAL EDGE WITH WARM IRON.
DO NOT TOUCH FILM.
MADE IN U.S.A.

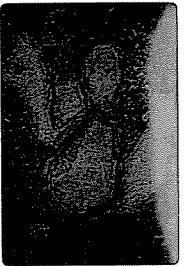
3515 APR 1970

14066,7 0.9



Clearer, large spg.
grain because of fixation

3519 JUN 1971
14305,102 0.9

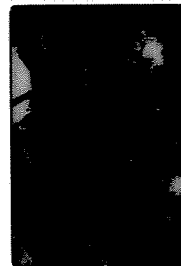


Sp. ? no glass - px in it

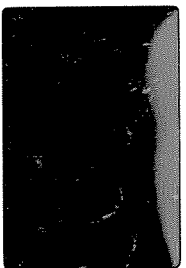
14066,7 0.9 mm

3514 JUN 1971

1471K-2



308,3 50 0.22

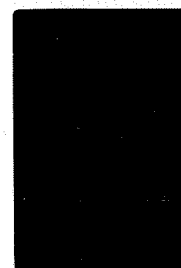


Same as 31, 4x10

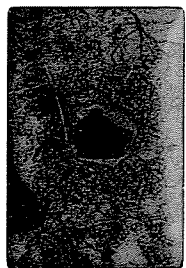
14066,7 0.4 mm

3514 JUN 1971

1471K-2



308,3 48 0.12

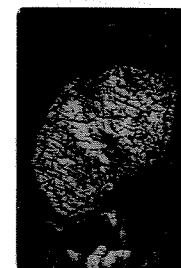


Pink spread 20, felt?
corrosion

14082,10 0.32

3514 JUN 1971

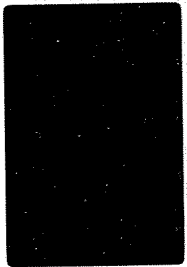
14301,95 0.9



Same as 3, 4x10

3513 JUN 1971

14314,10 0.9



Embogged Dia. in Dilledist

3515 APR 1970

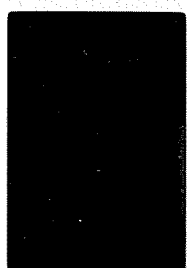
14066,7 0.9 mm



cut. coarse matrix &
type 3 clast. opgs
common along cut.

3519 JUN 1971

14305,102 0.9



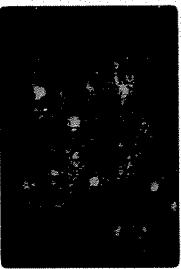
10% of the area is 22 - a leucopy
phastical form, probably
px in a form

3, 4 APR 1968
14306, 14 2.5mm



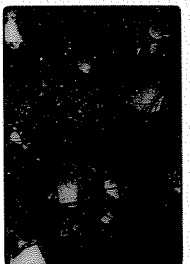
Type 3 leaf + containing type 2
Type 2 clear of and below type 2
Type 2 20170 hunk to 20172

6, 25 NOV 1968
14318, 14 6.6



Same as 5, 25, 14 - part for all compared elements. Approx. 200 mls. - white?

10, 4 APR 1968
14301, 14 2.8mm

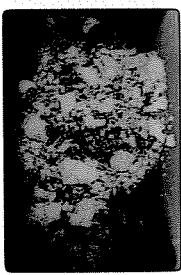


Same as 9, 14, 14
Texture continuous below. 1 D2 clear (post incl. Met.)

20, 25 NOV 1968
14171, 11 2.7



20, 27 DEC 1965
14301, 81 3.4



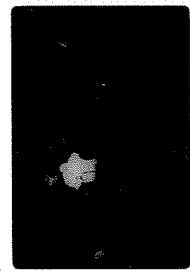
Shattered, granulated gelatinoid → D2
82 cm. Throat

20, 27 DEC 1965
14301, 81 2.7



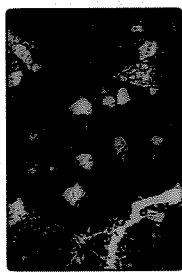
Same as 19, 25, 14

21, 4 APR 1968
14301, 14 0.8mm

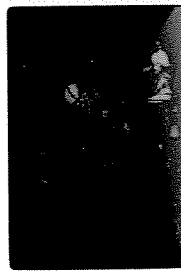


Same as 20, 25, 14
Texture decent. below D2 clear (no healing seen in part incl. mm)

11, 25 NOV 1968
14312, 13 5.4

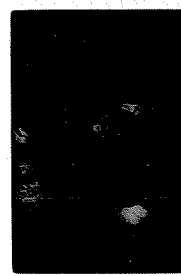


20, 27 DEC 1965
14301, 81 3.4



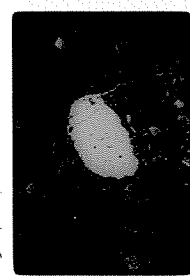
Same as 25, 25, 14

8, 26 NOV 1968
14301, 81 3.4



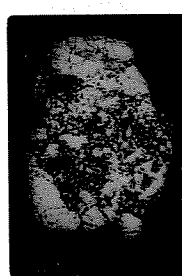
Same as 7, 25, 14

20, 17 AUG 1968
14306, 60 1.4



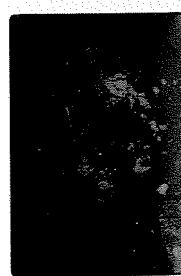
Recessive clear in D1b

11, 27 DEC 1965
14303, 46 3.4



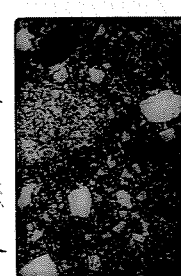
Same clear as in 7, 9 clear

5, 25 NOV 1968
14318, 14 6.6



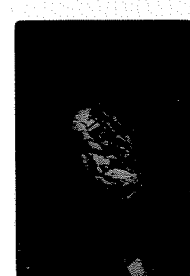
Clear of gutters + clear dorsal from gel. thro

5, 4 APR 1968
14301, 14 2.8mm



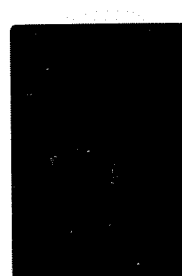
Coarsely mottled - type 2 + clear? of liquid type 2

20, 17 AUG 1968
14306, 60 1.4



Same as 29, 25, 14
No fabric - continuous from clear to hot - lower part clear

12, 27 DEC 1965
14303, 46 3.4



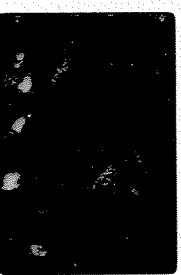
Same as 11, 25, 14

18, 2
14066, 5
APR 1964
0.4mm



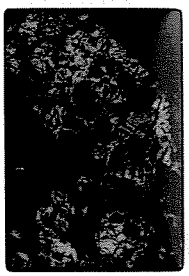
Bum'st's cloot
D/E

6, 23
14314, 9
JUN 1961
304



Same as 5 UEN

19, 2
14066, 5
D. 1mm



Same as 18 UEN
D/E

8, 19
14305, 100
A. 2



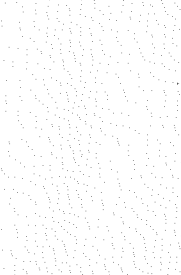
Sho'ked epimorphotic -
Ptygometron-like

19, 6
14066, 7
APR 1964
0.75mm



Like 11, Reilly's along
Alps. base.

15, 18
14220, 9
JUN 1961



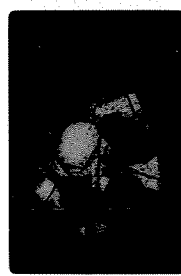
Same as 15 UEN
Compare with 4-17 as is
same

14, 6
14066, 7
APR 1964
0.75mm



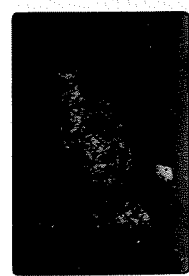
Same as 13 UEN

15, 12
14066, 10
JUN 1961
0.3mm



Clot with Reilly's shells,
or clumping in Reilly's Pt
trachite

15, 20
14066, 50
AUG 1962
0.7



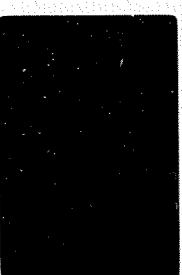
Same as 14 UEN

12, 28
14318, 19
MEX



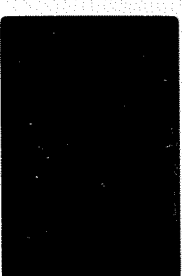
Same as 11 UEN

~~14, 5~~ 14063, 56
DEC 1963
0.9



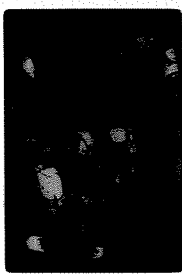
Partly Reilly's. Single Pt
knobs like 15/15

15, 18
14220, 9
AUG 1962
0.9

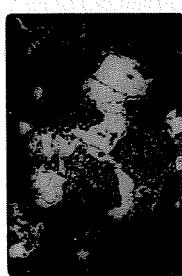


Horst & Westkamp, bands
between fields - Pt is thin
2/19: green bands ??

15, 18
14220, 9
JUN 1961
0.9



35, 3
14301, 13
APR 1968
2.2mm



36, 3
14301, 13
APR 1968
2.2mm



Same as 35 UEN