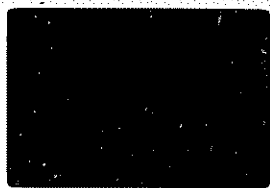


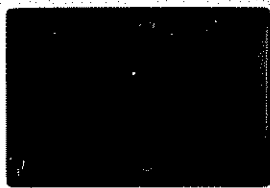
JUN 72 P10 22 67015 B₂



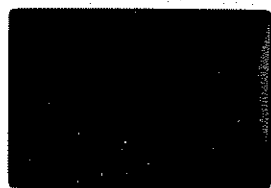
JUN 72 P10 11 67475 B₄



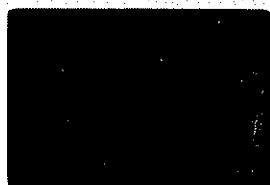
JUN 72 P10 28 64475 B₂



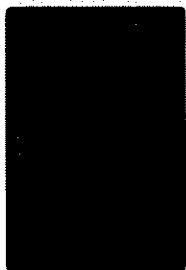
JUN 72 P10 19 65035 B₂



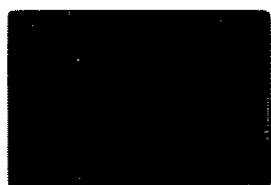
JUN 72 P10 4 67016 B₂



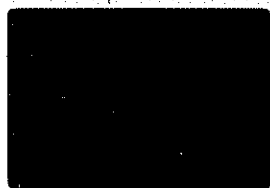
JUN 72 P10 15 68815 B₄



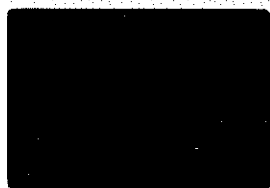
JUN 72 P10 6 64476, B₂



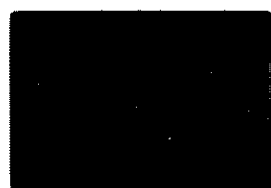
JUN 72 P10 30 69955 C₁



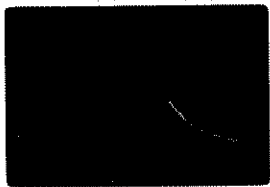
62234 B₁



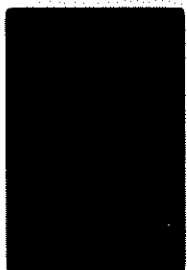
62236 B₁



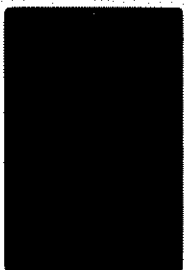
62255 B₂



62275 B₂



JUN 72 P10 24 61015 B₂



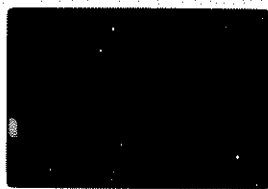
JUN 72 P10 27 61015 B₂



JUN 72 P10 20 64475 B₂



64435 - slightly mod.
17128 B₄

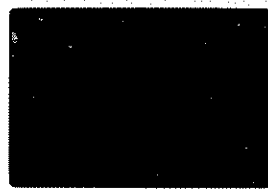


(7)

JUN 72 P10 64475 B1

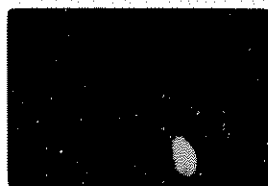
62236

B1



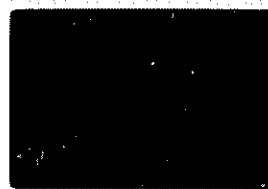
Block is 1cm square

JUN 72 P10



(5)

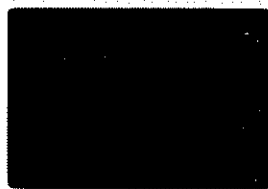
JUN 72 P10 64475 B2



8

JUN 72 P10 64476 B2

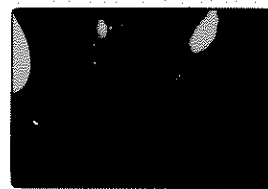
JUN 72 P10 64476 B2



JUN 72 P10 64475 B5

62236

B1

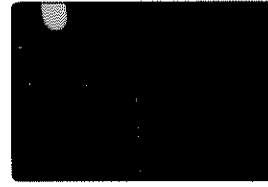


4cm long; "folds" about 4-6mm across total length of block made 10-12mm

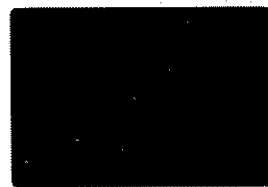
JUN 72 P10



Howie



Howie

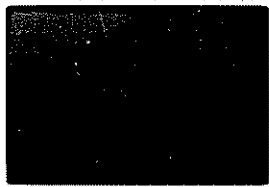


Howie



Howie

1,1 MAY72P3
60017,4 3.4



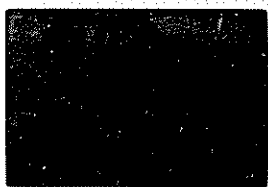
"Vesicle Phase" in shock.
melted bx

2,1 MAY72P3
60017,4 3.4



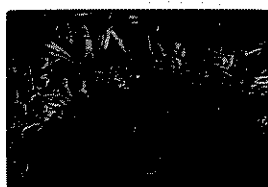
Same as 1 UxN

3,1 MAY72P3
60017,4 3.4



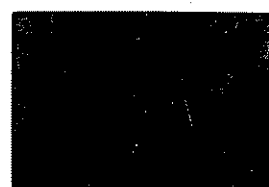
Same as 1, Viled
showing convex out
on CK

4,1 MAY72P3
60017,4 3.4



Same as 3 UxN

5,1 MAY72P3
60017,4 2.2



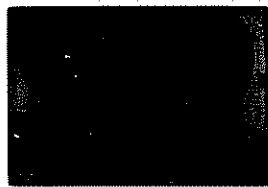
"Vesicle Phase" clear,
fine gr. border phase

6,1 MAY72P3
60017,4 2.2



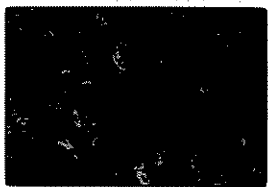
Same as 5 UxN

7,1 MAY72P3
60017,4 0.9



Wavy spherulitic zone
one side! Feldspar beam
on basalt droplet opposite

8,1 MAY72P3
60017,4 0.9



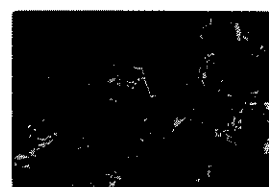
Same as 7 UxN

9,1 MAY72P3
60017,4 0.6



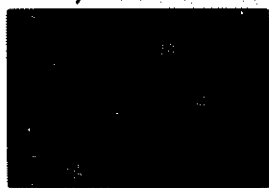
"Basalt" lining vesicle?
like Apollo 17 broad px vesicle
lining

10,1 MAY72P3
60017,4 0.6



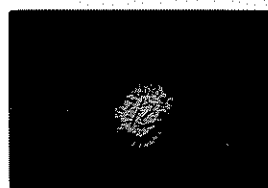
Same as 9 UxN

11,1 MAY72P3
60017,4 0.7



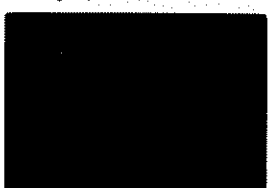
"Reac. Rim" on opx?

12,1 MAY72P3
60017,4 0.7



Same as 11 UxN

13,1 MAY72P3
60017,4 0.9



Irreg. "basalt" patches +
smaller things - result
of opx reacts??

14,1 MAY72P3
60017,4 0.9



Same as 13 UxN

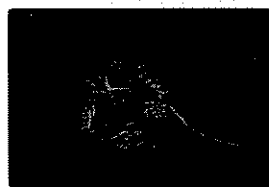
15,1 MAY72P3
60017,4 0.7



"Basalt" drop, fine border,
a little red-brown glass,
+ linear relict pc

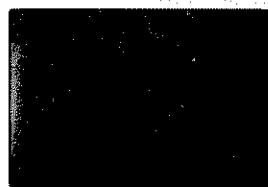
Like Apollo 17
Basalt on patches

16,1 MAY72P3
60017,4 0.9



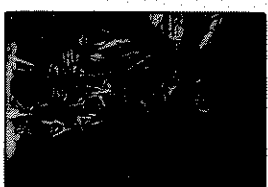
Same as 15 UxN

17,1 MAY72P3
60017,4 2.2



Close up "Vesicle phase"

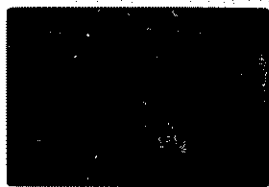
18,1 MAY72P3
60017,4 2.2



Same as 17 UxN

19,1 MAY 72P3

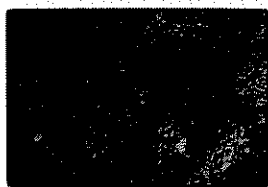
60315,2 3.4



Poikiloblastic texture, pc host (pxs encl), opx host, pc encl.; small hornfels clast

20,1 MAY 72P3

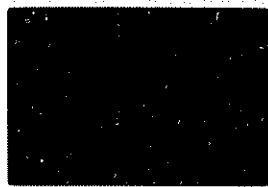
60315,2 3.4



Same as 19 UCN

21,1 MAY 72P3

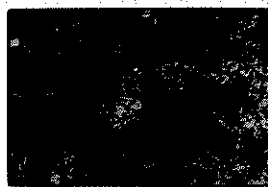
60315,2 0.9



Interstitial betw. poikiloblasts - ilm + basaltic

22,1 MAY 72P3

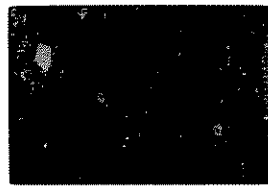
60315,2 0.8



Same as 21 UCN

23,1 MAY 72P3

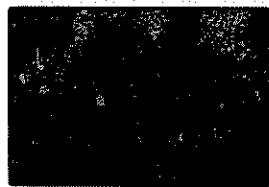
60315,2 3.4



Gen. texture - broken pc, mafics -> sugary betw poikils.

24,1 MAY 72P3

60315,2 3.4



Same as 23 UCN

25,1 MAY 72P3

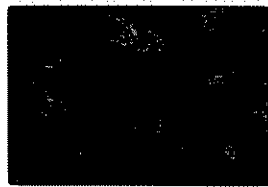
68815,4 3.4



Hornfels clast, devit. brown glass, white bands of poikiloblastic pc -> banded pc mylon.

26,1 MAY 72P3

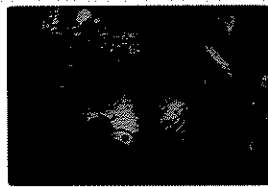
68815,4 3.4



Same as 25 UCN

27,1 MAY 72P3

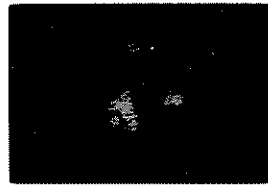
68815,4 3.4



Clast 20: broken relict 2. pc of barred px? in qtz.

28,1 MAY 72P3

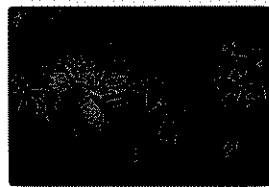
68815,4 3.4



Same as 27 UCN

29,1 MAY 72P3

68815,4 3.4

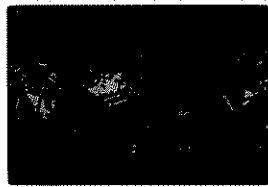


Clast in devit. glass. Relict 2 pc, barred px? - meta-bas. ? or melted plutonic

at slowly xlliz.

30,1 MAY 72P3

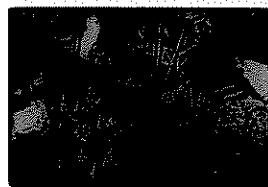
68815,4 3.4



Same as 29 UCN

31,1 MAY 72P3

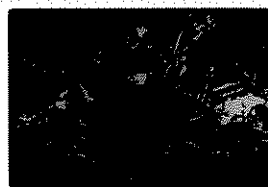
68815,4 2.7



Same as in 30. Relict 2 pc, mafics, ? Poss. mult. pl. plutonic

32,1 MAY 72P3

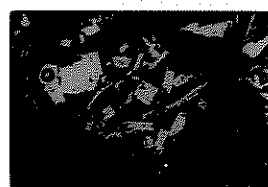
68815,4 2.7



Same as 31 UCN

33,1 MAY 72P3

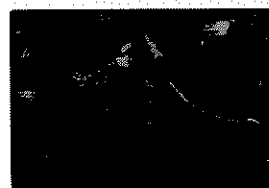
68815,4 2.2



One of clasts in 31; relict 2 skeletal pc

34,1 MAY 72P3

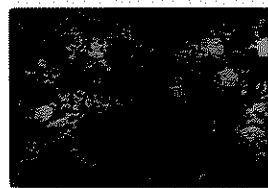
68815,4 2.2



Same as 33 UCN

35,1 MAY 72P3

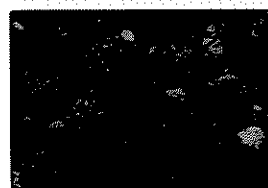
68815,4 3.4



Hornfels clasts in white, mylonitized matrix

36,1 MAY 72P3

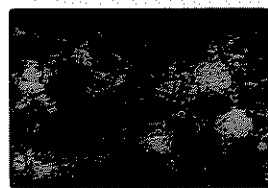
68815,4 3.4



Same as 35 UCN

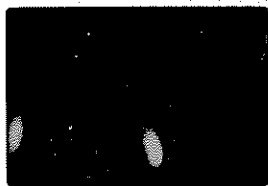
37,1 MAY 72P3

68815,4 2.2



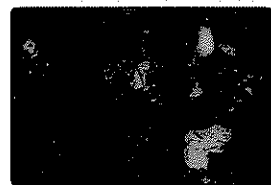
Same area as 35, closer

1,2 MAY 72P5
60315,2 0.9



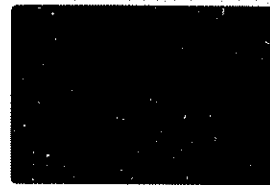
Hornfels clast, interstit.
"basalt"

2,2 MAY 72P5
60315,2 0.9



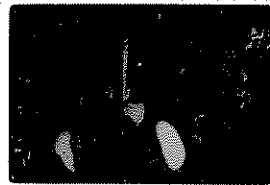
Same as 1, 1X

3,2 MAY 72P5
60315,2 0.9



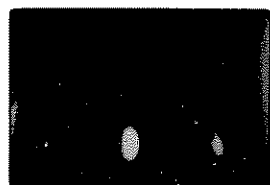
Small hornfelsic pc clast
in opx periklinal

4,2 MAY 72P5
60315,2 0.9



Same as 3, 1X

5,2 MAY 72P5
67015,9(5) 0.9



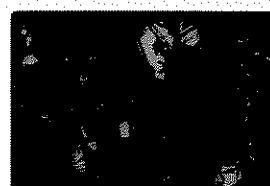
Matrix of white mx bk
small hornfels clast -
px + some cliv?

6,2 MAY 72P5
67015,9(5) 0.9



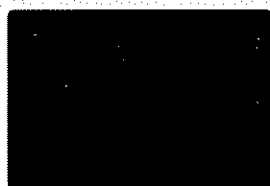
Same as 5, 1X

8,2 MAY 72P5
67015,9(5) 2.7



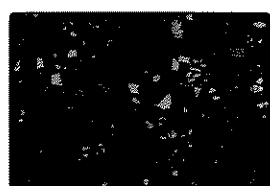
Same as 7, 1X

9,2 MAY 72P5
67015,9(5) 3.4



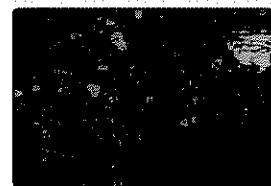
Gen. view - clast is
glassy, mylonite envelope
on rounded white clast

10,2 MAY 72P5
67015,9(5) 3.4



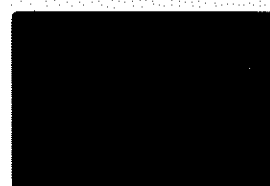
Same as 9, 1X

12,2 MAY 72P5
67015,9(5) 3.4



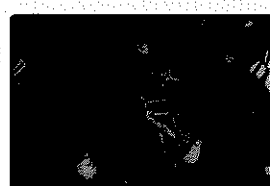
Same as 11, 1X

13,2 MAY 72P5
67015,9(5) 0.7



Metaclastic clastic fine
meta mx vicinimafico
in white mx

14,2 MAY 72P5
67015,9(5) 0.7



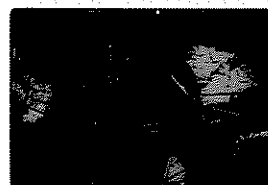
Same as 13, 1X

15,2 MAY 72P5
67015,9(5) 0.6



Relict pc in metaclastic
with lathe-shaped pc

15,2 MAY 72P5
67015,9(5) 0.6



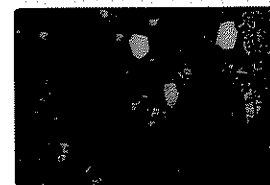
Same as 15, 1X

17,2 MAY 72P5
67015,9(5) 2.2



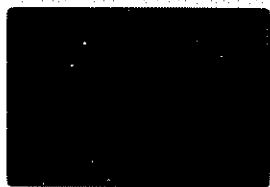
Annular dark clast w.
lt metaclastics, 1 "basaltic"
+ other metaclastic

18,2 MAY 72P5
67015,9(5) 2.2



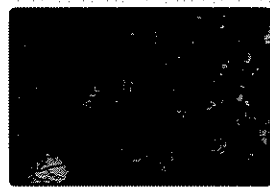
Same as 17, 1X

19, 2 MAY 72P5
67015, 9 (5) 0.9



Fine gr. metachlastic

20, 2 MAY 72P5
67015, 9 (5) 0.9



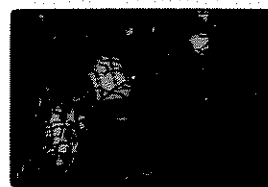
Same as 19 UCN

21, 2 MAY 72P5
67015, 9 (5) 0.9



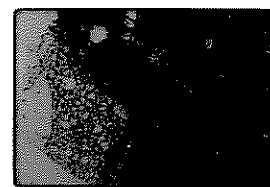
Relict px, orthopyroxene, plagioclase
of strong mat. Various clasts
unreacted??

22, 2 MAY 72P5
67015, 9 (5) 0.9



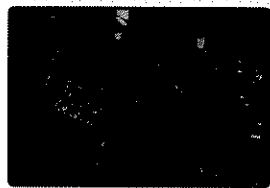
Same as 21 UCN

23, 2 MAY 72P5
67015, 8 (4) 3.2



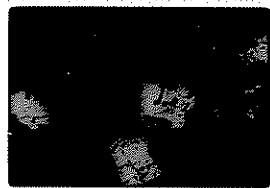
Sect in a dark clast. In
this is relict peridotite matrix
enclosing metachlastic rock,
containing relict orthopyroxene

24, 2 MAY 72P5
67015, 8 (4) 2.2



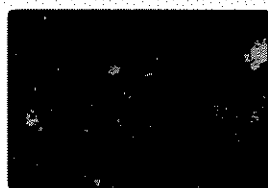
Same as 23 UCN

25, 2 MAY 72P5
67015, 8 (4) 2.2



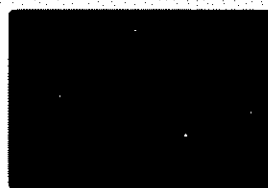
Gen. view - diff. types of
relict peridotite clasts in dark
mat.

26, 2 MAY 72P5
67015, 8 (4) 2.2



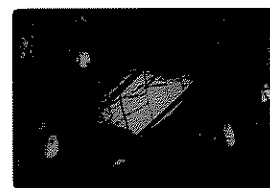
Same as 25 UCN

27, 2 MAY 72P5
67015, 9 (5) 0.9



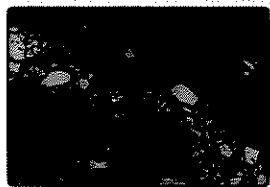
Composite metachlastic w. fine
gr. of opx enclosing peridotite
plagioclase in relict matrix

28, 2 MAY 72P5
67015, 9 (5) 0.9



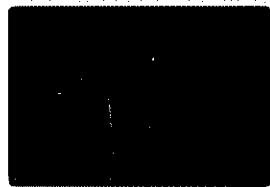
Same as 27 UCN

29, 2 MAY 72P5
67015, 8 (4) 0.9



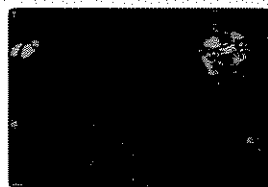
Thin relict peridotite vein in
dark clast. Mat. of
unreacted.

30, 2 MAY 72P5
67015, 8 (4) 0.9



15418 type clast, D16 clast
in dark mat.

31, 2 MAY 72P5
67015, 8 (4) 0.9



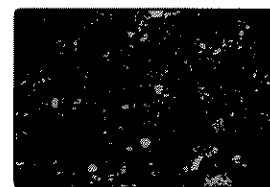
Same as 30 UCN

32, 2 MAY 72P5
67015, 10 (6) 3.4



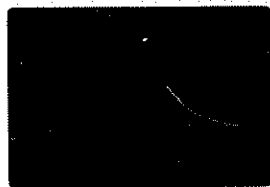
Gen. view - darker mat. is
orthopyroxene, relict matrix,
both unreacted. Sect. of clast

33, 2 MAY 72P5
67015, 10 (6) 3.4



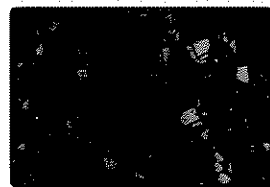
Same as 32 UCN

34, 2 MAY 72P5
67015, 10 (6) 0.9



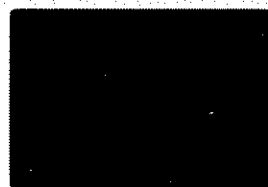
Mat. with small brown
clasts, no trace of
relict peridotite or orthopyroxene

35, 2 MAY 72P5
67015, 10 (6) 0.9



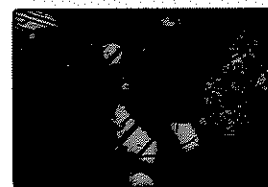
Same as 34 UCN

36, 2 MAY 72P5
67015, 10 (6) 0.9



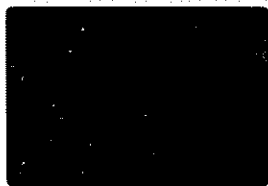
Metachlastic - note fine peridotite
hornblende olivine

37, 2 MAY 72P5
67015, 10 (6) 0.9



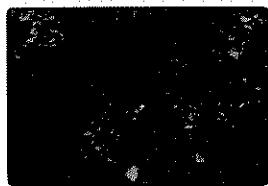
Same as 36 UCN

1,3 MAY 72P5
67075,2(L1) 6.6



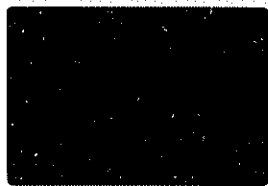
Gen. view - clust white =
granulated hornfels, not too
much opt from adiff. v.k

2,3 MAY 72P5
67075,2(L1) 6.6



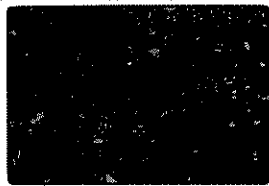
Same as 1 U&N

3,3 MAY 72P5
67075,2(L1) 5.3



Close up showing mix "vein"
in white area + melted
hornfels

4,3 MAY 72P5
67075,2(L1) 5.3



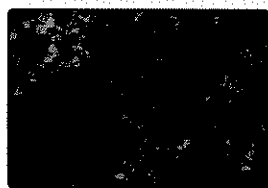
Same as 3 U&N

5,3 MAY 72P5
67075,2(L1) 5.3



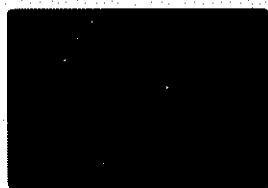
large hornfels, relict

6,3 MAY 72P5
67075,2(L1) 5.3



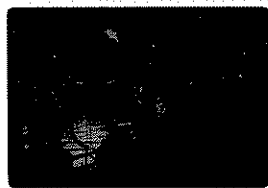
Same as 5 U&N

7,3 MAY 72P5
67075,2(L1) 2.2



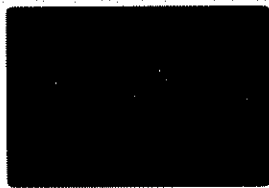
large hornfels relict

8,3 MAY 72P5
67075,2(L1) 2.2



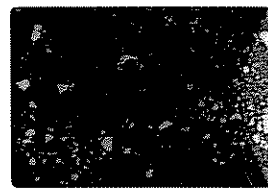
Same as 7 U&N

9,3 MAY 72P5
67075,2(L1) 3.4



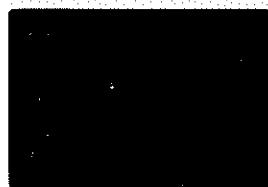
white patch "veined" by
matrix + small hornfels

10,3 MAY 72P5
67075,2(L1) 3.4



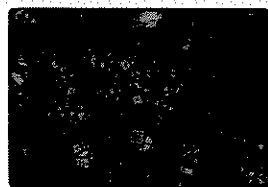
Same as 9 U&N

11,3 MAY 72P5
67075,2(L1) 3.4



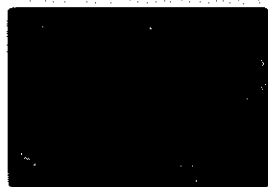
Matrix

12,3 MAY 72P5
67075,2(L1) 3.4



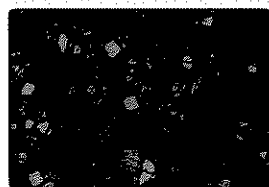
Same as 11 U&N

13,3 MAY 72P5
67075,2(L1) 2.2



Matrix, close

14,3 MAY 72P5
67075,2(L1) 2.2



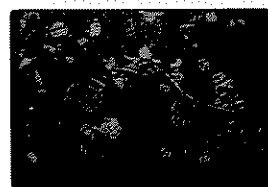
Same as 13 U&N

15,3 MAY 72P5
67075,3(L1) 3.4



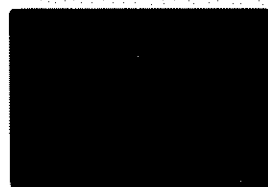
large hornfels + quarried
pieces in white patch

16,3 MAY 72P5
67075,3(L1) 3.4



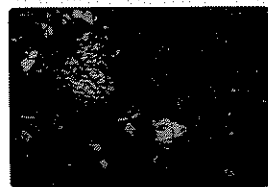
Same as 15 U&N

17,3 MAY 72P5
67075,3(L1) 3.4



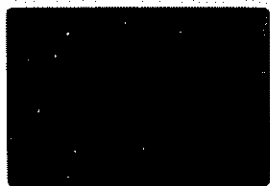
Broken olivine - in dead
white patch

18,3 MAY 72P5
67075,3(L1) 3.4



Same as 17 U&N

19, 3 MAY 72P5
67075, 3 (1) 3.4



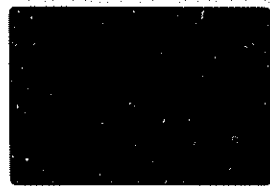
White patches & cliv-nich
matrix

20, 3 MAY 72P5
67075, 3 (1) 3.4



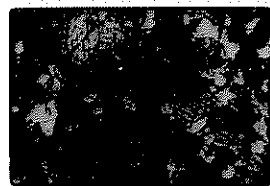
Same as 19 UxW

21, 3 MAY 72P5
67075, 3 (1) 3.4



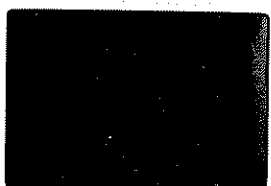
Large clumps of ol in
white patch

22, 3 MAY 72P5
67075, 3 (1) 3.4



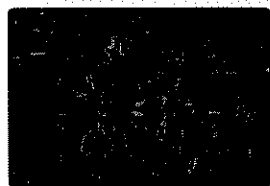
Same as 21 UxW

23, 3 MAY 72P5
68415, 8 8.2



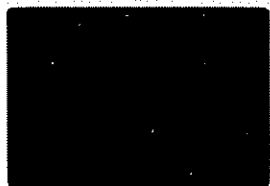
General - note stellate
patterns, optite, some cl.

24, 3 MAY 72P5
68415, 8 8.2



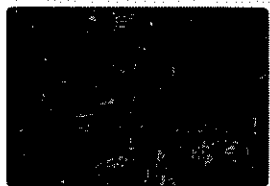
Same as 23, UxW

25, 3 MAY 72P5
68415, 8 6.6



Same as 23 closer

26, 3 MAY 72P5
68415, 8 6.6



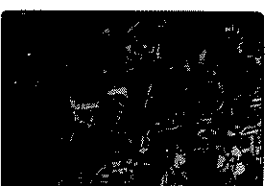
Same as 25 UxW

27, 3 MAY 72P5
68415, 8 5.3



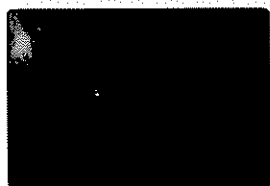
Same as 23, closer

28, 3 MAY 72P5
68415, 8 5.3



Same as 27 UxW

29, 3 MAY 72P5
68415, 8 3.4



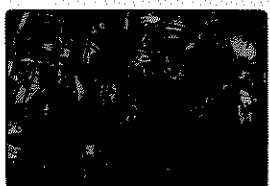
Fine grained patch

30, 3 MAY 72P5
68415, 8 3.4



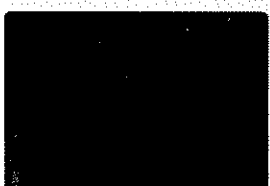
Same as 29 UxW

31, 3 MAY 72P5
68415, 8 2.2



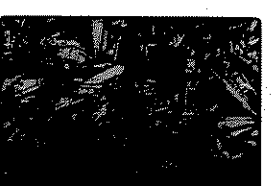
Same as 29, closer

32, 3 MAY 72P5
68415, 8 3.4



Textural inhomogeneity
+ small crush zone

33, 3 MAY 72P5
68415, 8 3.4



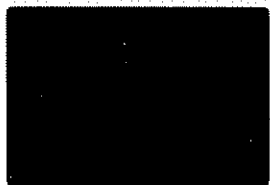
Same as 32 UxW

34, 3 MAY 72P5
68415, 8 2.2



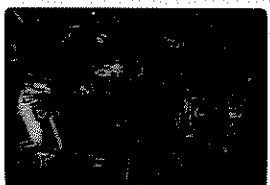
Stellate pc

35, 3 MAY 72P5
68415, 8 3.4



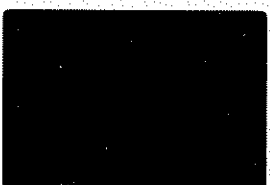
Gen. optite texture

36, 3 MAY 72P5
68415, 8 3.4



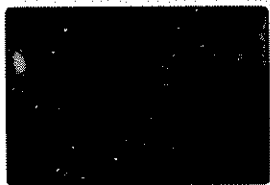
Same as 35 UxW

37, 3 MAY 72P5
68415, 3 0.9



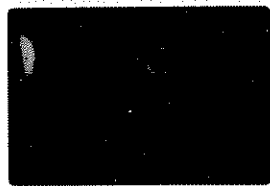
Fine grained patch

1,4 JUN 72P3
68415,8 0.9



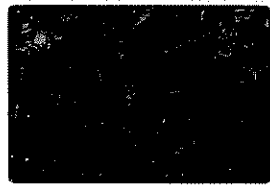
Fine ground patches

2,4 JUN 72P3
68415,8 0.9



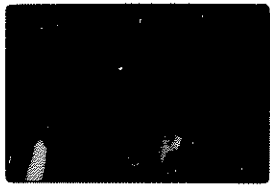
Same as 1

3,4 JUN 72P3
68415,8 0.9



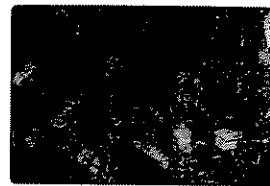
Same as 1 UKN

4,4 JUN 72P3
60215,2 8.2



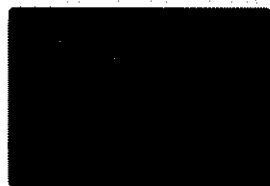
large relict pe

5,4 JUN 72P3
60215,2 8.2



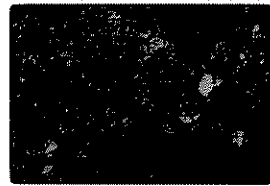
Same as 4 UKN

6,4 JUN 72P3
60215,2 8.2



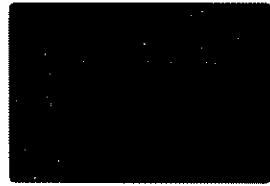
Contact. Amorphous - brown, de-
vit. glass? + cold large darker
pe. Pellets + rims

7,4 JUN 72P3
60215,2 8.2



Same as 6 UKN

8,4 JUN 72P3
60215,2 3.4



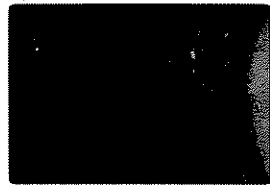
Crush zones & offset twins
in relict pe

9,4 JUN 72P3
60215,2 3.4



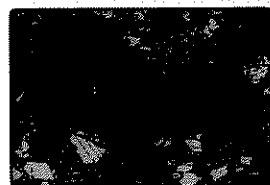
Same as 8 UKN

10,4 JUN 72P3
60215,2 3.4



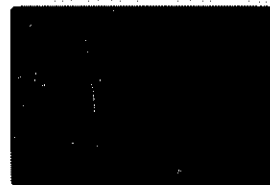
Color banding in devit.
glass? frags.

11,4 JUN 72P3
60215,2 3.4



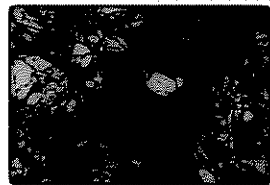
Same as 10 UKN

12,4 JUN 72P3
60215,2 2.2



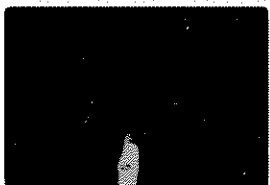
Broken devit. glass?

13,4 JUN 72P3
60215,2 2.2



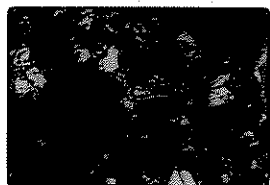
Same as 12 UKN

14,4 JUN 72P3
60215,2 2.2



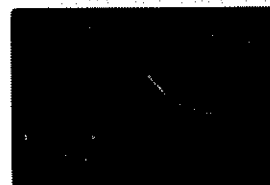
bpx in crushed pe

15,4 JUN 72P3
60215,2 2.2



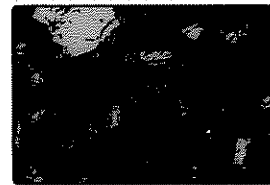
Same as 14 UKN

16,4 JUN 72P3
60215,2 0.7



Small frag. xllized becht?
?

17,4 JUN 72P3
60215,2 0.7



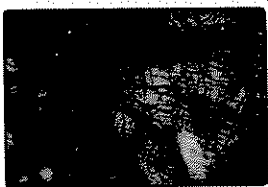
Same as 16 UKN

18,4 JUN 72P3
60215,2 3.4



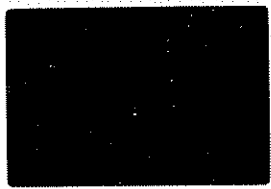
Large crushed pe - dark
spots are brokendevit px?

19,4 JUN 72P3
60215,2 3.4



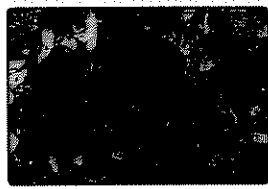
Same as 18 UCN

20,4 JUN 72P3
60215,2 2.2



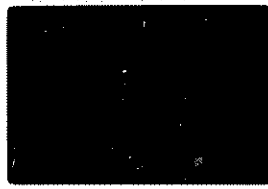
Finely rextilliz? px? or decrit-
glass? with pc inclusions

21,4 JUN 72P3
60215,2 2.2



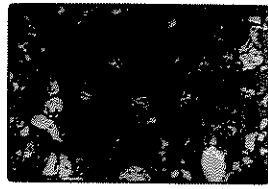
Same as 20 UCN

22,4 JUN 72P3
60215,2 2.2



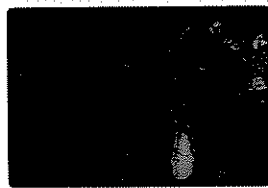
Same as 20

23,4 JUN 72P3
60215,2 2.2



Same as 22 UCN

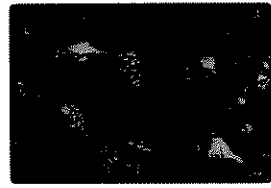
24,4 JUN 72P3
68115,4 8.2



Gen. view: Buechite clasts in
white, partly annealed mx.
Devit. brown glass.

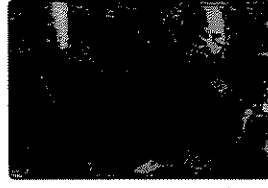
white clasts re.
projected

25,4 JUN 72P3
68115,4 8.2



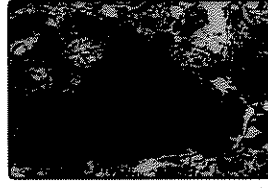
Same as 24 UCN

26,4 JUN 72P3
68115,4 8.2



Another view - light meta-
clastics in dark matrix

27,4 JUN 72P3
68115,4 8.2



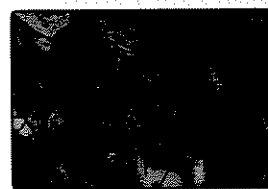
Same as 26

28,4 JUN 72P3
68115,4 8.2



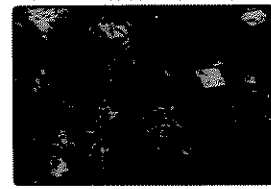
Same as 27 UCN

29,4 JUN 72P3
68115,4 6.6



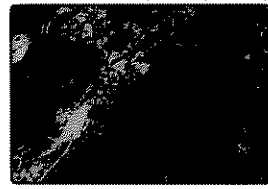
Metaclastic clasts, "vitro-
phyre"

30,4 JUN 72P3
68115,4 6.6



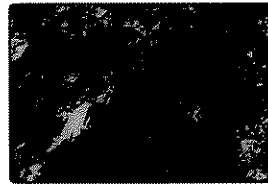
Same as 29 UCN

31,4 JUN 72P3
68115,4 5.3



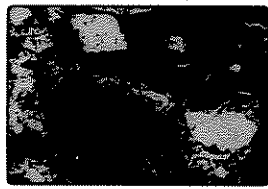
Devit. brown glass vein
with grosser clast mx

32,4 JUN 72P3
68115,4 5.3



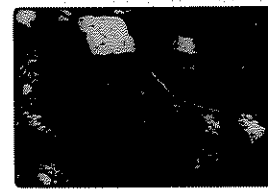
Same as 31 UCN

33,4 JUN 72P3
68115,4 3.4



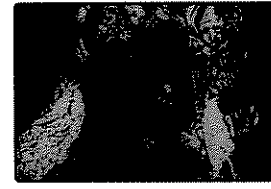
"Vitrophyre" with deformed
px & buchite

34,4 JUN 72P3
68115,4 3.4



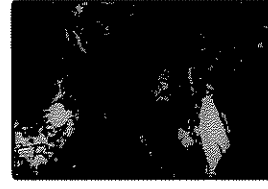
Same as 33 UCN

35,4 JUN 72P3
68115,4 3.4



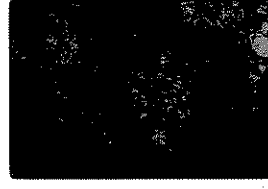
clast no broken cpx w. shock
lam., relict but rextilliz.
pc

36,4 JUN 72P3
68115,4 3.4



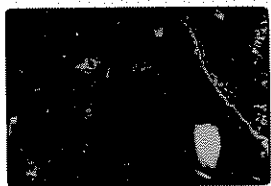
Same as 35 UCN

37,4 JUN 72P3
68115,4 3.4



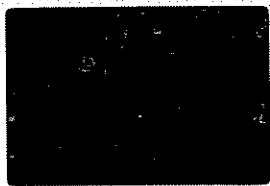
Brownish metach. clast enclos-
ed by metaclastics, large one
enclosed by quartz metach. clast

1,5
68115,4 0.9



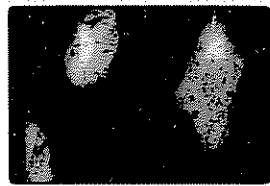
Reshocked "buckite" -
even tiny pc later are
Kxlliz

2,5
68115,4 0.9



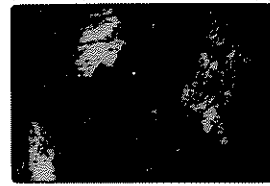
Same as 1 LxN

3,5
68115,4 0.9



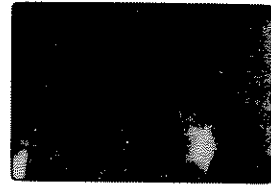
pc relicts in "buckite"

4,5
68115,4 0.9



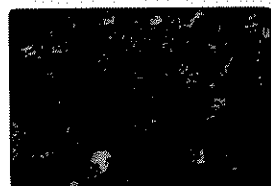
Same as 3 LxN

5,5
67955,7 5.3



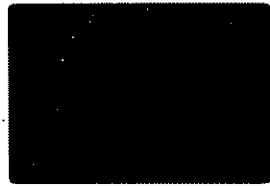
Gen. Shattered metagabb
Relict metagabb + 1 grain
blastic poly. anorthoc. frag

6,5
67955,7 5.3



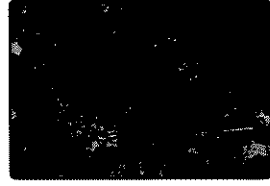
Same as 5 LxN

7,5
67955,6 5.3



Gen view. Big metagabb
+ anorthoc.

8,5
67955,6 5.3



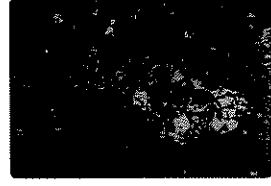
Same as 7 LxN

9,5
67955,6 2.2



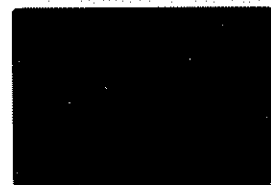
Metagabb, pcs around
oliv in opx

10,5
67955,6 2.2



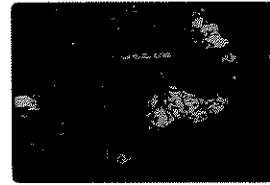
Same as 9 LxN

11,5
67955,6 2.2



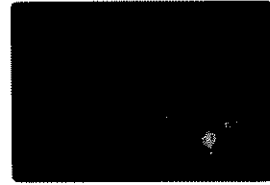
Metagabb, mylonitized
edge. Round pcs in pc

12,5
67955,6 2.2



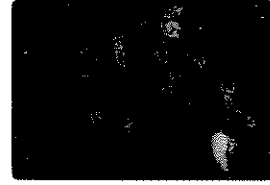
Same as 11 LxN

13,5
67955,6 0.9



Rounded oliv in opx
enclosed in pc. Round pcs
in big pc

14,5
67955,6 0.9



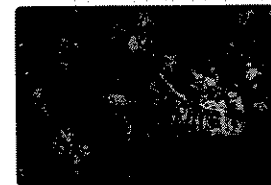
Same as 13 LxN

15,5
67955,6 2.2



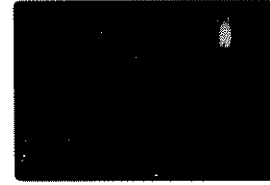
Clast w. large opx enclosing
Oliv. 2 long strips of finely
Kxlliz in relict pc?

16,5
67955,6 2.2



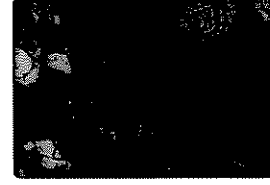
Same as 15 LxN

17,5
67955,6 0.6



Closer of family Kxlliz in
relict pc?

18,5
67955,6 0.6



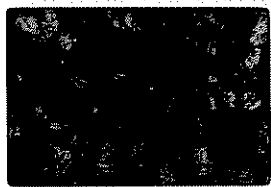
Same as 17 LxN

19,5
67955,6 0.9



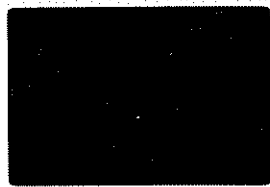
Mylonitized edge of meta-
gabb. with strip of finely
Kxlliz, in relict pc?

20,5
67955,6 0.9



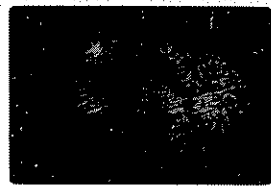
Same as 19 UxN

21,5
67955,6 0.7



Shocked pl w. round px
incls.

22,5
67955,6 0.7



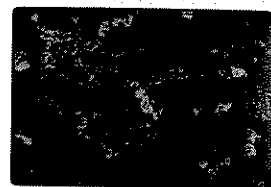
Same as 21 UxN

23,5
67955,7 0.9



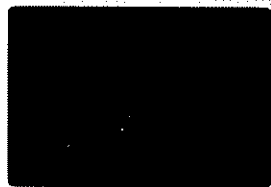
Metagabb. clast, intergr.
cpx-px; adji. feldsp. re-
x11/2 hi relief px?

24,5
67955,7 0.9



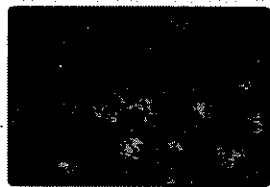
Same as 23, UxN

25,5
67955,7 0.9



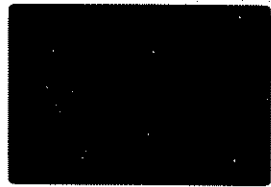
Granoblastic-polygonal
meta-anorthosite

26,5
67955,7 0.9



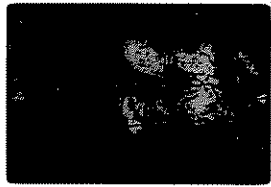
Same as 25 UxN

27,5
67955,7 0.9



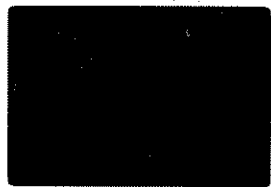
Coarse granoblastic texture
in metagabb. clast

28,5
67955,7 0.9



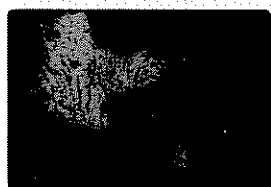
Same as 27 UxN

29,5
67955,7 0.9



Grain size disparity (4-20 μ
diameter to 100). big px, small
px incls, big px, small px incls

30,5
67955,7 0.9



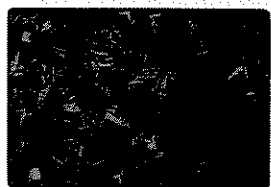
Same as 29 UxN

31,5
68415,9 5.3



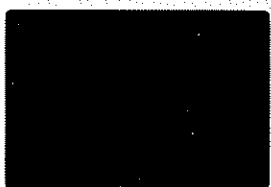
Gen. view - fine-grained?
strip, hi L grains next to
it, side, ll growth next out

32,5
68415,9 5.3



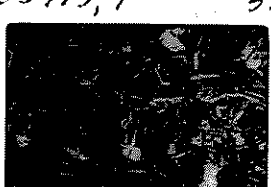
Same as 31 UxN

33,5
68415,9 5.3



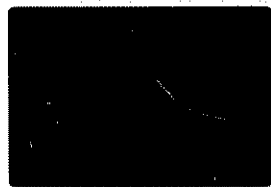
Gen. view away from
fine-gr. strip

34,5
68415,9 5.3



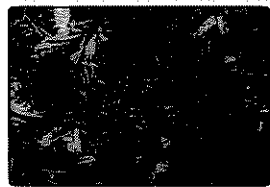
Same as 33 UxN

35,5
68415,9 3.4



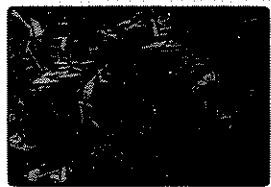
Fine-grained strip

36,5
68415,9 3.4



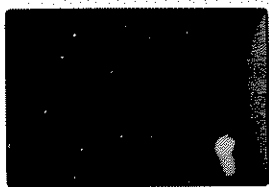
Same as 35 UxN

37,5
68415,9 3.4



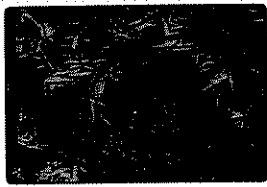
Fine-gr. strip, ll orient.
zone

1, ~~6~~ JUN 72P3
68415,9 3.4



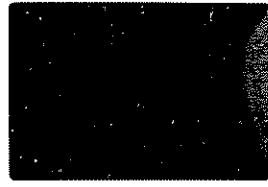
Fine grained strip, hi L
quartz zone, 11 quartz
zone

2,6 JUN 72P3
68415,9 3.4



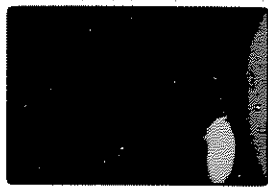
Same as 1 LKN

3,6 JUN 72P3
68415,9 3.4



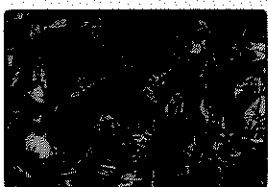
Ophit. texture, some
oliv.

5,6 JUN 72P3
68415,8 3.4



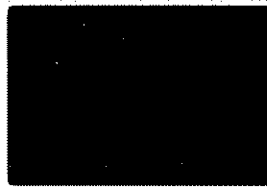
Small fine grained patches
of vesicular quartz

5,6 JUN 72P3
68415,8 3.4



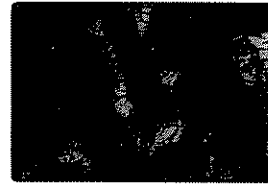
Same as 5 LKN

7,6 JUN 72P3
68415,8 0.9



Shattered pc → zone
w. px intact, diaplectic
pc

8,6 JUN 72P3
68415,8 0.9



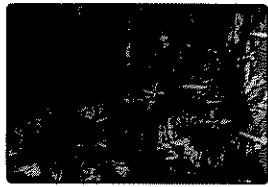
Same as 7, LKN

9,6 JUN 72P3
68415,8 2.2



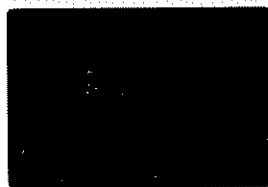
Shattered rk & diaplectic
pc. Note lack of fracs. in
massive quartz

10,6 JUN 72P3
68415,8 2.2



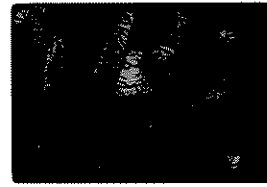
Same as 9 LKN

11,6 JUN 72P3
68415,8 0.9



Same as 9, Note "dough-
nut"

12,6 JUN 72P3
68415,8 0.9



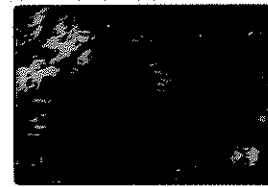
Same as 11, LKN

13,6 JUN 72P3
68115,3 0.6



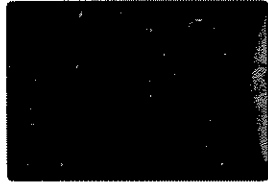
Shock-deformed px-
rocks, some a melt or
diaplectic state

14,6 JUN 72P3
68115,3 0.6



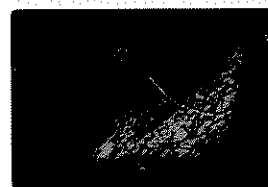
Same as 13 LKN

15,6 JUN 72P3
68115,3 2.2



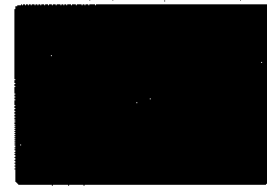
Shattered pc, post diaplec-
tic. Debris, vesic, glass
in some sites

16,6 JUN 72P3
68115,3 2.2



Same as 15 LKN

17,6 JUN 72P3
68115,3 0.7



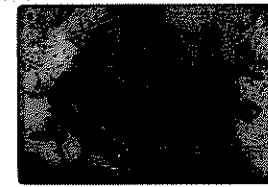
Fluidal flow struc, de-
vit. textures

18,6 JUN 72P3
68115,3 0.7



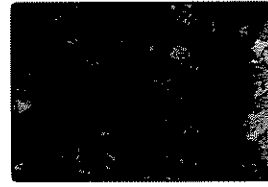
Same as 17 LKN

19,6 JUN 72P3
68115,3 0.9



Annealed clastic, a small
layered metaclastic frag

20,6 JUN 72P3
68115,3 0.9



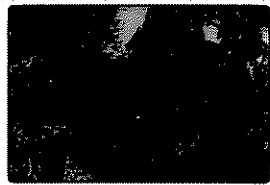
Same as 19, LKN

21,6 JUN 72P3
68115,3 0.9



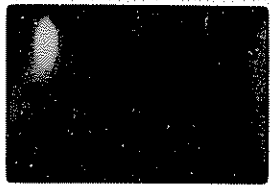
"stretched tuffy" - devit
glass stretched across
vesicles

22,6 JUN 72P3
68115,3 0.9



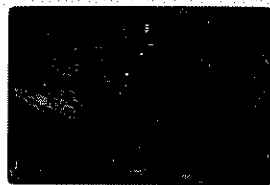
Same as 21 UCN

23,6 JUN 72P3
68115,3 0.9



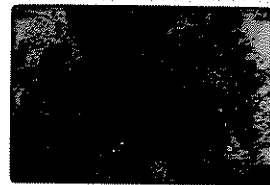
Shocked periphyroclast of pyroxene
in basaltic w. ulv. pc matrix

24,6 JUN 72P3
68115,3 0.9



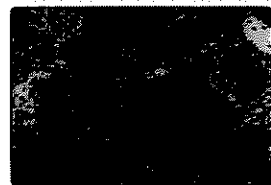
Same as 23, UCN

25,6 JUN 72P3
68115,3 2.2



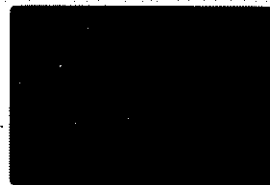
Clast w. central zone of
aligned periphyroclasts of pyroxene -
2 end zones of trachoid texture

26,6 JUN 72P3
68115,3 2.2



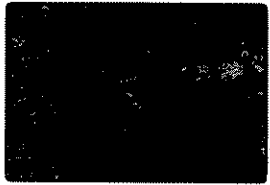
Same as 25 UCN

27,6 JUN 72P3
68115,3 0.9



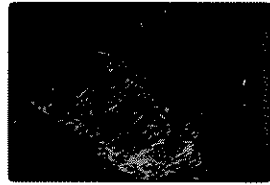
Same as 25, one end
clearer

28,6 JUN 72P3
68115,3 0.9



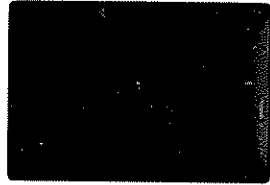
Same as 27 UCN

29,6 JUN 72P3
68115,4 2.2



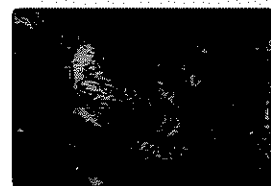
Shock lamellae, partly
melted pyroxene

30,6 JUN 72P3
68115,4 2.2



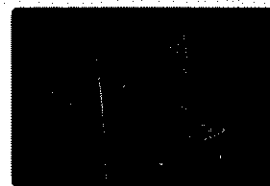
Cataclastic melt flow
structures - 100 micrometers in cataclastic
flow

31,6 JUN 72P3
68115,4 2.2



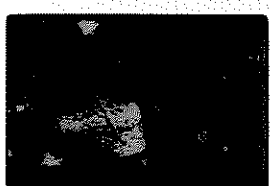
Same as 30 UCN

32,6 JUN 72P3
68115,4 3.4



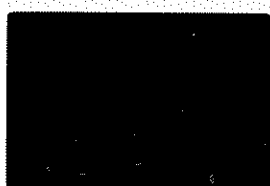
Annealed clasts, shock
lamellae in pyroxene to melt,
shock lam., in pyroxene; devit glass
or vesicles

33,6 JUN 72P3
68115,4 3.4



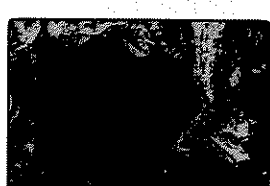
Same as 32 UCN

34,6 JUN 72P3
68115,4 0.9



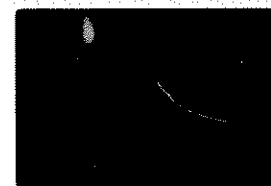
Banded melt pyroxene + devit
glass + vesicles

35,6 JUN 72P3
68115,4 0.9



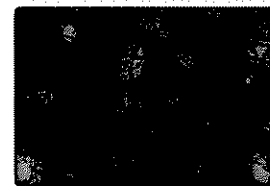
Same as 31 UCN

36,6 JUN 72P3
68215,2 0.9



Contact beto. cataclastic
w. matrix finely divided pyroxene
& melt w. little

37,6 JUN 72P3
68215,2 0.9



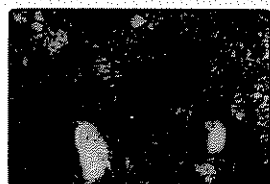
Same as 36 UCN

1,7 JUN 72P5
60215,2 6.6



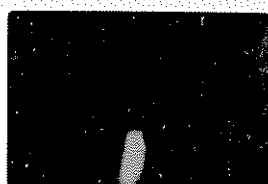
large round egg - mostly
divided px in matrix in
center set back in (thin) region
present outside

2,7 JUN 72P5
60215,2 6.6



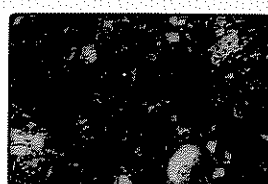
Same as 1 UEN

3,7 JUN 72P5
60215,2 6.6



Another like 1

4,7 JUN 72P5
60215,2 6.6



Same as 3 UEN

5,7 JUN 72P5
60215,2 3.4



Close of core zone in #1,
thin piece of px, outer
px, thin

6,7 JUN 72P5
60215,2 3.4



Same as 5 UEN

7,7 JUN 72P5
60215,2 0.9



Core (64), dense px corner,
px-free rim, outer (H)
thin, lower corner px thin

8,7 JUN 72P5
60215,2 0.9



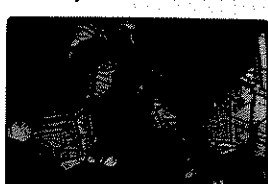
Same as 7 UEN

9,7 JUN 72P5
67075,2 0.9



granobl.-polyg. texture
largest biocrystals visible

10,7 JUN 72P5
67075,2 0.9



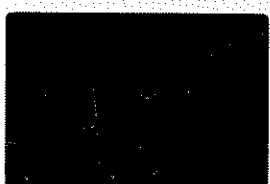
Same as 9 UEN

11,7 JUN 72P5
67075,2 0.6



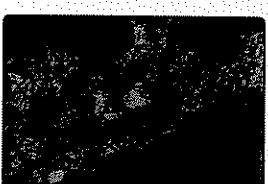
Small, low relief, low Bf
opx, no. negl. relict

12,7 JUN 72P5
~~60315,2~~ 0.9



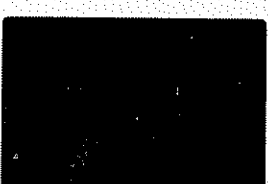
Same as 11 UEN
metaclastic inclusion in
67x poikiloblast

13,7 JUN 72P5
60315,2 0.9



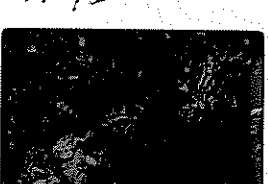
Same as 12 UEN

14,7 JUN 72P5
60315,2 0.9



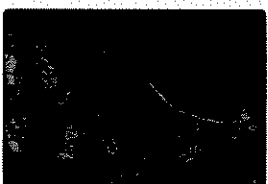
granobl. polyg. pc clast
in opx poikiloblast + quartz
bi-intergranular interstitial mat.

15,7 JUN 72P5
60315,2 0.9



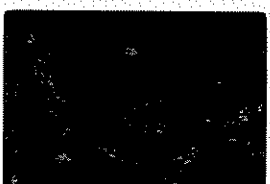
Same as 14 UEN

16,7 JUN 72P5
68815,4 8.2



metaclastic clast + ~~matrix~~
~~matrix~~
~~matrix~~

17,7 JUN 72P5
68815,4 8.2



Same as 16 UEN

18,7 JUN 72P5
68815,4 8.2



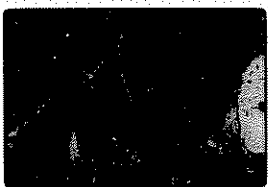
Metaclastic clast + clasts in
matrix and pc + relict
laths & broken px

19,7 JUN 72P5
68815,4 8.2



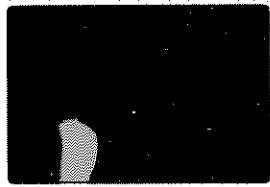
Same as 18 UEN

20,7 JUN 72P5
61295,9 2.2



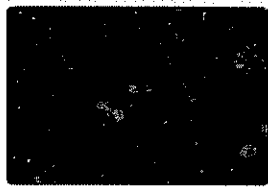
Polys. pc in sluer frac in
single pc grain. 2 pcs in
colore 279.

21,7 JUN 72P5
61295,9 0.9



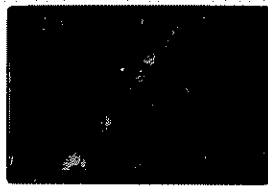
Cluser of 20. Note px in
polys. Sheff.

22,7 JUN 72P5
61295,9 0.9



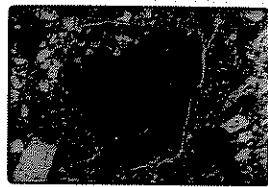
Same as 21 UxN

23,7 JUN 72P5
61295,9 0.7



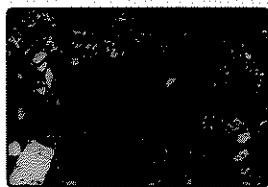
cluser; offact of horis
on 2 fracs

24,7 JUN 72P5
61295,9 2.2



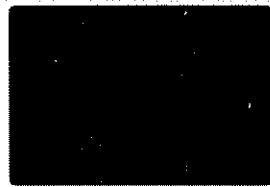
Lt. metaclastic attached to
dark one. Dark has new
pc, brown glass, portala. pc

25,7 JUN 72P5
61295,9 2.2



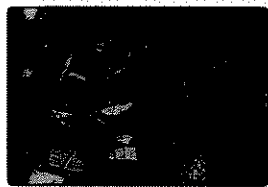
Same as 24 UxN
Note yell. glass frag. +
Note large pc portuloblasts

26,7 JUN 72P5
61295,9 0.7



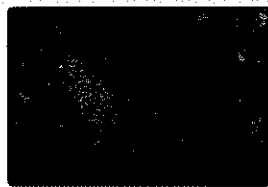
Hornfels + odd Oliv. (?)
rk - a piece of 68415-like
rk?

27,7 JUN 72P5
61295,9 0.7



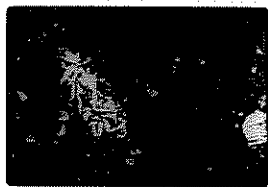
Same as 26 UxN

28,7 JUN 72P5
61295,9 2.2



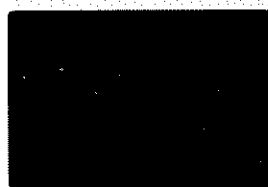
Revit. glass + 68415-type
but no px

29,7 JUN 72P5
61295,9 2.2



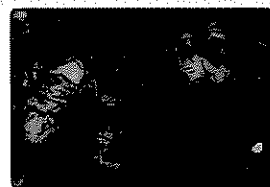
Same as 28 UxN

30,7 JUN 72P5
61295,9 0.9



Shredded hornfels of pc
within px

31,7 JUN 72P5
61295,9 0.9



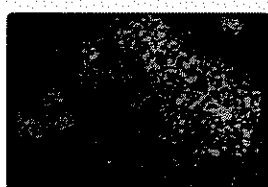
Same as 30 UxN

32,7 JUN 72P5
61295,9 2.7



Partly hornfelsed pc.
Relict pc. Some px

33,7 JUN 72P5
61295,9 2.7



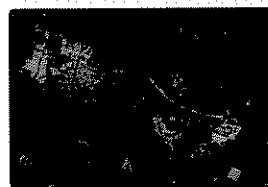
Same as 32 UxN

34,7 JUN 72P5
61295,9 2.2



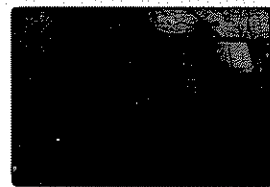
2 hornfels clasts

35,7 JUN 72P5
61295,9 2.2



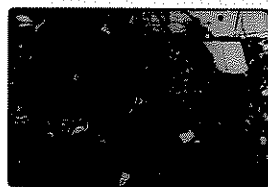
Same as 34 UxN

36,7 JUN 72P5
61295,9 2.2



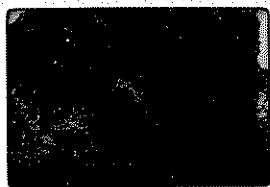
Metaclastic clast, portula-
beastia texture (see UxN)

37,7 JUN 72P5
61295,9 2.2



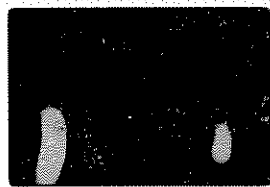
Same as 36 UxN

1,8 JUN 72P5
64435,5 8.2



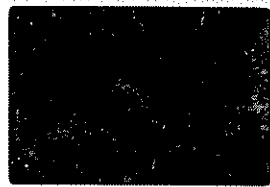
Poss. white injec in gray
or opposite flow lines in
gray not clearly trace.

2,8 JUN 72P5
64435,5 8.2



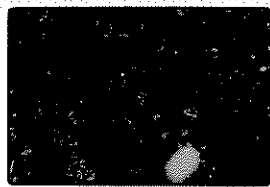
Same as 1 LKN

3,8 JUN 72P5
64435,5 6.6



Same closer

4,8 JUN 72P5
64435,5 6.6



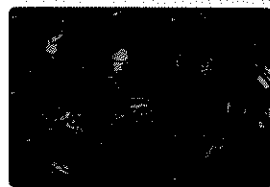
Same as 3 LKN

5,8 JUN 72P5
64435,5 0.9



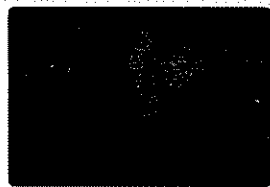
Small irregular clast in
gray part

5,8 JUN 72P5
64435,5 0.9



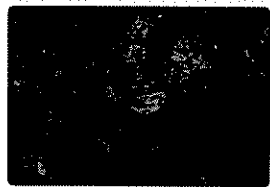
Same as 5 LKN

7,8 JUN 72P5
64435,5 2.2



White mat. injected both
into gray & into a coarse
horizontal frag. in the gray

8,8 JUN 72P5
64435,5 2.2



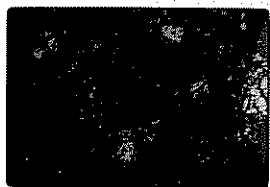
Same as 7 LKN

9,8 JUN 72P5
62275,3 8.2



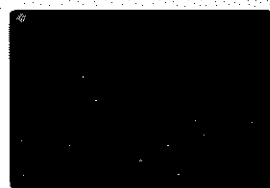
Contact white PK, much
glass Oliv.?

10,8 JUN 72P5
62275,3 8.2



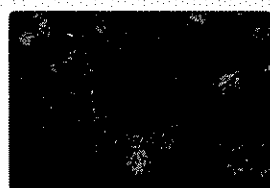
Same as 9 LKN

11,8 JUN 72P5
62275,3 6.6



Same as 9 closer

12,8 JUN 72P5
62275,3 6.6



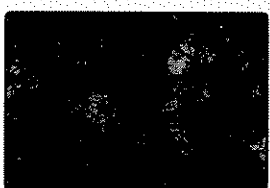
Same as 11 LKN

13,8 JUN 72P5
62275,3 5.3



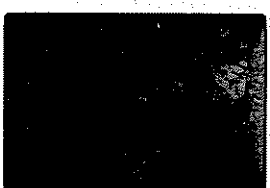
Same as 9 closer

14,8 JUN 72P5
62275,3 5.3



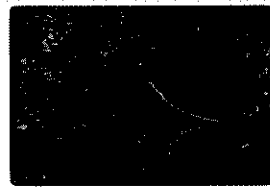
Same as 13 LKN

15,8 JUN 72P5
61295,9 8.2



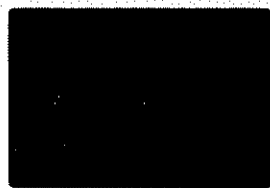
Gen. v. 40. Clast so. pr
& diaplectic pl

16,8 JUN 72P5
61295,9 8.2



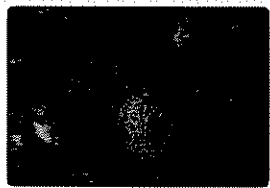
Same as 15 LKN

17,8 JUN 72P5
61295,9 8.2



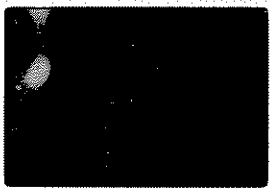
Same as 15, different
area

18,8 JUN 72P5
61295,9 8.2



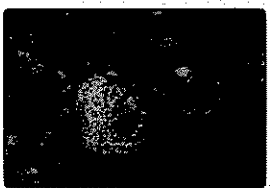
Same as 17 LKN

19,8 JUN 72P5
61295,9 6.6



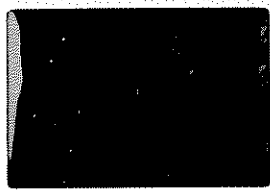
Same as 17, closer

20,8 JUN 72P5
61295,9 6.6



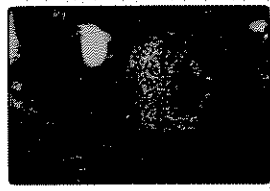
Same as 19 LKN

21, 8 JUN 1965
61295, 9 5.3



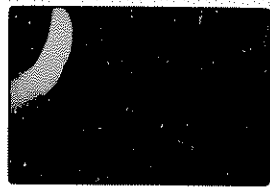
Same closer

22, 8 JUN 1965
61295, 9 5.3



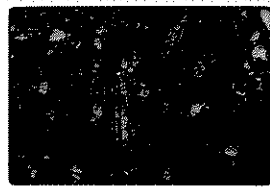
Same as 21 UXR

25, 8 JUN 1965
60215, 13 8.2



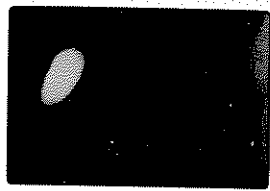
Catad. anorthosite

24, 8 JUN 1965
60215, 13 8.2



Same as 23 UXR

25, 8 JUN 1965
60215, 13 5.3



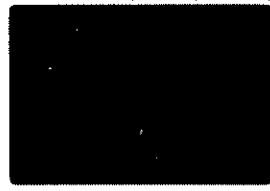
Same, closer

24, 8 JUN 1965
60215, 13 5.3



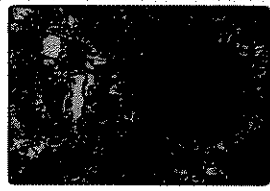
Same as 25 UXR

24, 8 JUN 1965
60215, 13 8.2



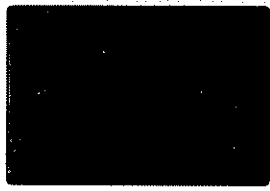
Big "lineart" - definite
px relief + small inclusions.

24, 8 JUN 1965
60215, 13 8.2



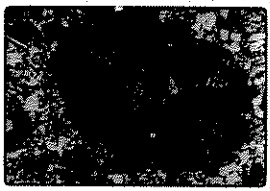
Same as 27 UXR

24, 8 JUN 1965
60215, 13 5.3



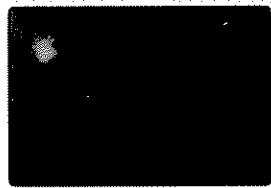
Same, closer - px relief

24, 8 JUN 1965
60215, 13 5.3



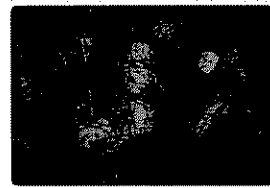
Same as 29 UXR

31, 8 JUN 1965
60215, 13 8.2



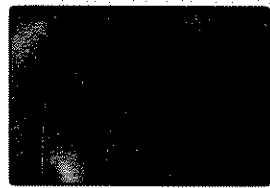
Pink patch as big px in
9 across it

31, 8 JUN 1965
60215, 13 8.2



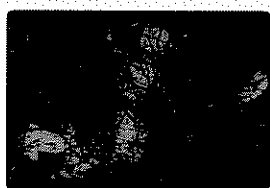
Same as 31 UXR

33, 8 JUN 1965
60215, 13 5.3



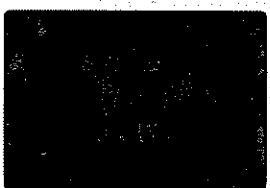
Same, closer

34, 8 JUN 1965
60215, 13 5.3



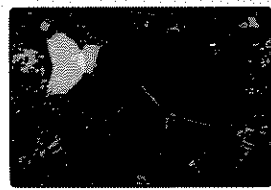
Same as 33 UXR

31, 8 JUN 1965
61295, 9 2.7



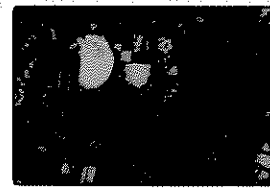
Shocked Gray - disjunct.
px 4 px

31, 8 JUN 1965
61295, 9 2.7



Same as 35 UXR

31, 8 JUN 1965
61295, 9 2.7



Another view UXR