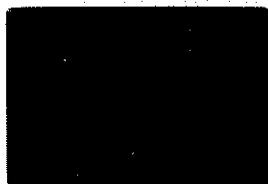
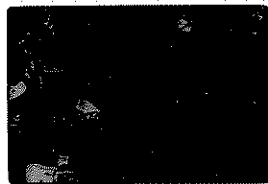


1,9 NOV 1955  
60335,13 0.9



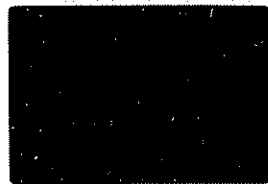
Grad. from hornfels to  
ophit. texture. like 14310

2,9 NOV 1955  
60335,13 0.9



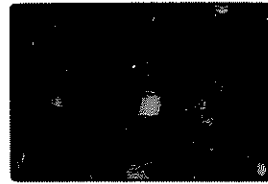
Same as 1 LKN

3,9 NOV 1955  
60335,13 0.9



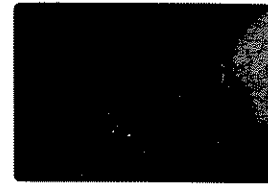
More abrupt change from  
fels to ophit.

4,9 NOV 1955  
60335,13 0.9



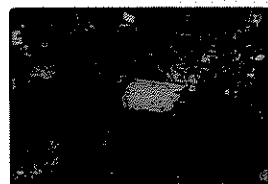
Same as 3 LKN

5,9 NOV 1955  
60335,13 3.4



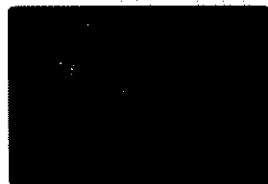
110pp. ophit. text. Oliv.  
poth. Linds pl

6,9 NOV 1955  
60335,13 3.4



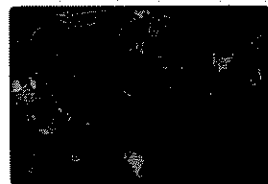
Same as 5 LKN

7,9 NOV 1955  
60335,13 3.4



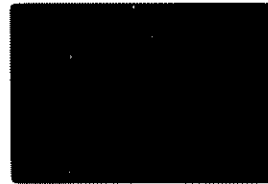
Relict pl in ophit. text.

8,9 NOV 1955  
60335,13 3.4



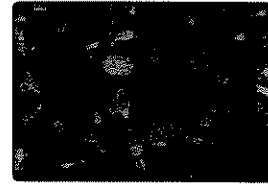
Same as 7 LKN

9,9 NOV 1955  
60335,13 3.4



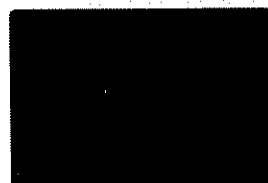
Coarse hornfels. Much  
too to Oliv to give  
ophit host by fusion

10,9 NOV 1955  
60335,13 3.4



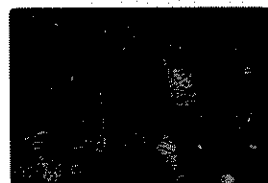
Same as 9 LKN

11,9 NOV 1955  
60335,13 8.2



Gen. view

12,9 NOV 1955  
60335,13 8.2



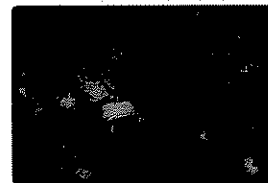
Same as 11 LKN

13,9 NOV 1955  
60335,13 8.2



Gen. view

14,9 NOV 1955  
60335,13 8.2



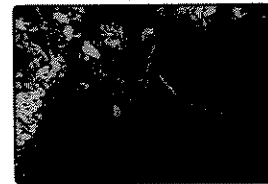
Same as 13 LKN

15,9 NOV 1955  
61016,13 6.6



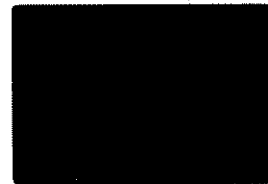
Crushed pl, px?; pl +  
maskelynite

16,9 NOV 1955  
61016,13 6.6



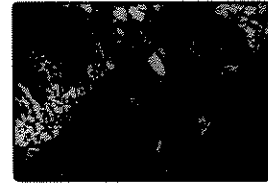
Same as 15 LKN

17,13 NOV 1955  
61016,13 5.3



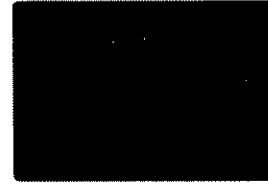
Same as 15 LKN

18,13 NOV 1955  
61016,13 5.3



Same as 17 LKN

19,9 NOV 1955  
61016,13 2.7



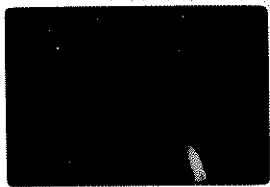
Relict texture, coarse  
pl, interstitial px

20,9 NOV 1955  
61016,13 2.7



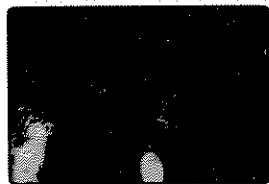
Same as 19 LKN

21,9 NOV 1985  
61156,6 3.4



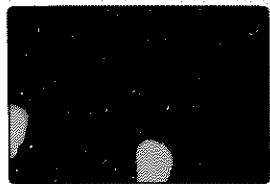
Hornfels, view back of hornfels, clasts in opt. poikilobl. mx

22,9 NOV 1985  
61156,6 3.4



Same as 21 LCN

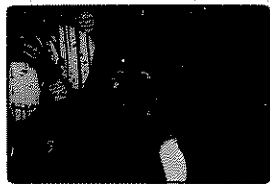
23,9 NOV 1985  
61156,6 3.4



Clast of coarse aug. perthite in opt. Grnd. to mx texture by inter size, abund. opx

B1 → 62

24,9 NOV 1985  
61156,6 3.4



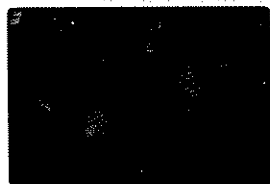
Same as 23 LCN

25,9 NOV 1985  
61156,6 2.2



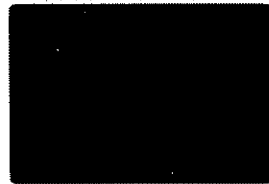
Same as 23 closer

26,9 NOV 1985  
61156,6 2.2



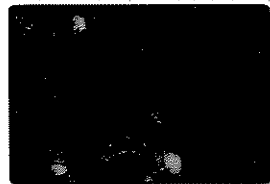
Same as 25 LCN

27,9 NOV 1985  
61156,6 3.4



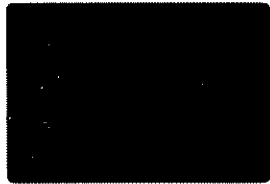
Like 25, but different appearance from edge, broken down to fine app. clast edge

28,9 NOV 1985  
61156,6 3.4



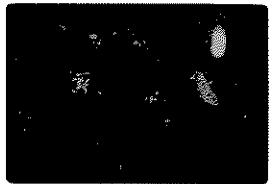
Same as 27 LCN

29,9 NOV 1985  
61156,6 6.6



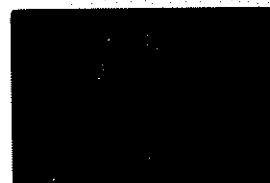
Gen. View; darker gray = opt. poikilobl. mX

30,9 NOV 1985  
61156,6 6.6



Same as 29 LCN

31,9 NOV 1985  
61156,6 6.6



Gen. view showing large clast

32,9 NOV 1985  
61156,6 6.6



Same as 31 LCN

33,9 NOV 1985  
62235,6 0.9



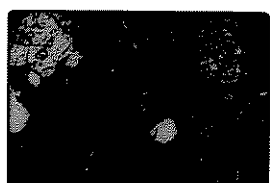
Grad. optit → poikilobl. texture. Simple px shared by both. Optit drop shape

34,9 NOV 1985  
62235,6 0.9



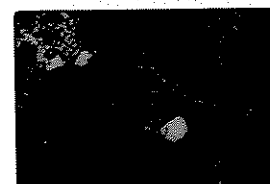
Same as 33 LCN

35,9 NOV 1985  
62235,6 3.4



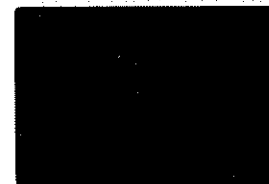
Hornfels, intergranular "bas" + v & hornfels + brown glass in poikilobl. mx

36,9 NOV 1985  
62235,6 3.4



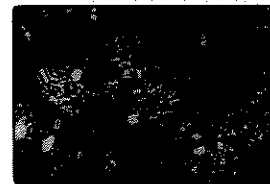
Same as 35 LCN

37,9 NOV 1985  
62235,6 2.7



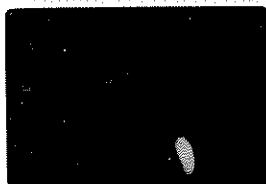
"intergranular bas" clast

38,9 NOV 1985  
62235,6 2.7



Same as 37 LCN

1,10 NOV 72P4  
62235,6 2.7



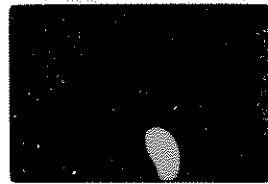
"Anterogran. bas" clast

2,10 NOV 72P4  
62235,6 2.7



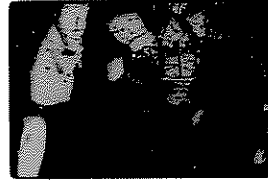
Same as 1 LKN

3,10 NOV 72P4  
62235,6 2.7



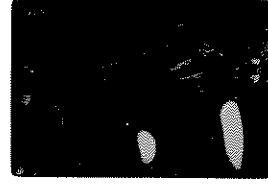
Hornfels w. pc clasts

4,10 NOV 72P4  
62235,6 2.7



Same as 3 LKN

5,10 NOV 72P4  
62235,6 2.7



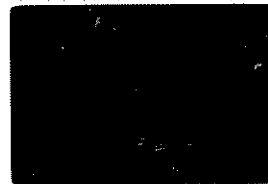
Partly recryst. pc LKN

6,10 NOV 72P4  
63335,13 3.4



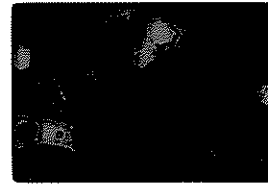
Recrystallized w. hornfels  
in corner recryst. zone  
melt

7,10 NOV 72P4  
63335,13 3.4



Same as 6 LKN

8,10 NOV 72P4  
63335,13 3.4



More exten. melted zone,  
"denite" frag.

9,10 NOV 72P4  
63335,13 3.4



Same as 8 LKN

10,10 NOV 72P4  
63335,13 2.7



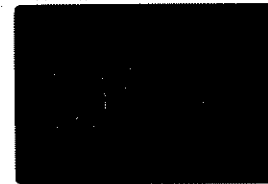
Same as 8, closer. Unmelted  
frag. w. radial pc growth.

11,10 NOV 72P4  
63335,13 2.7



Same as 10 LKN

12,10 NOV 72P4  
63335,13 0.9



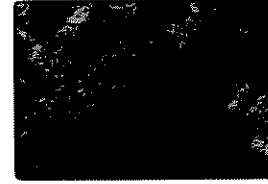
"Denite". Note coarse  
growth on side w. pc

13,10 NOV 72P4  
63335,13 0.9



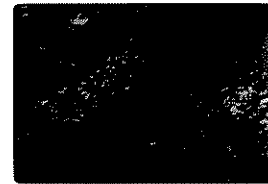
Same as 12 LKN

14,10 NOV 72P4  
63335,13 8.2



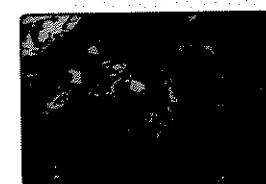
Gen view - Vars. in  
debris; marginal break-  
up in corner melt zone

15,10 NOV 72P4  
63335,13 8.2



Same as 14 LKN

16,10 NOV 72P4  
63335,13 8.2



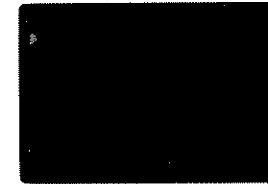
Gen view. Coarser melt  
zone is a strip.

17,10 NOV 72P4  
63335,13 8.2



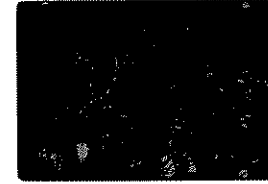
Same as 16 LKN

18,10 NOV 72P4  
65095,13 6.6



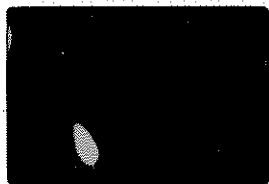
65095,13 Gen view

19,10 NOV 72P4  
65095,13 6.6



Same as 18 LKN

20,10 NOV 72P4  
65095,13 0.9



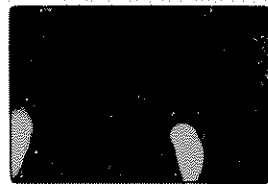
Gen. texture

21,10 NOV 72P4  
65095,13 0.9



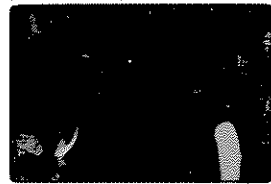
Same as 20 LKN

22,10 NOV 72P4  
65095,13 0.9



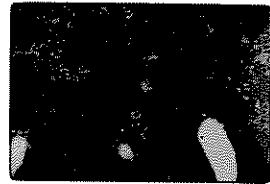
Common opt poikilo.

23,10 NOV 72P4  
65095,13 0.9



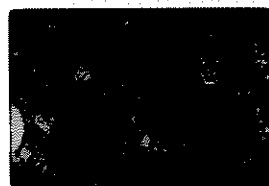
Same as 22 LKN

24,10 NOV 72P4  
66035,2 8.2



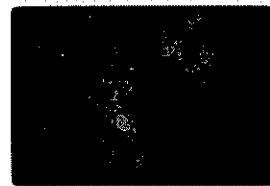
Gen view D2 with devit.  
by iron glass rim, hornfels in.  
Dk brown, rutled devit. clasts

25,10 NOV 72P4  
66035,2 8.2



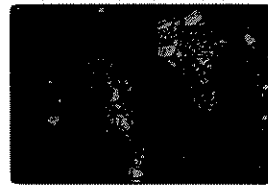
Same as 24 LKN

25,10 NOV 72P4  
66035,2 8.2



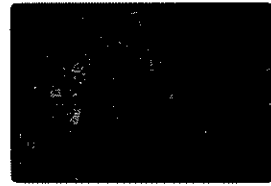
"D1" - "interst. bin + clast  
w/ pl "cumulate" in it

27,10 NOV 72P4  
66035,2 8.2



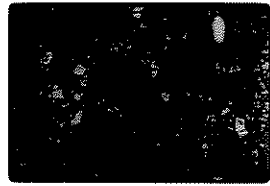
Same as 26 LKN

28,10 NOV 72P4  
66035,2 8.2



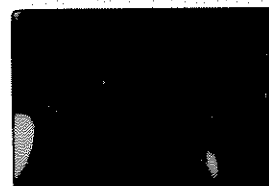
Gen view

29,10 NOV 72P4  
66035,2 8.2



Same as 28 LKN

30,10 NOV 72P4  
66035,2 3.4



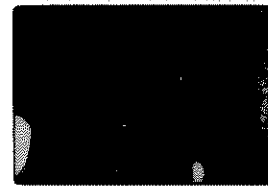
D1 (no pl (4th) loaded  
w/ aug. pl

31,10 NOV 72P4  
66035,2 3.4



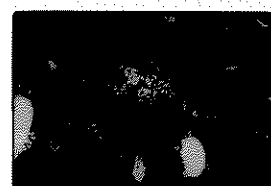
Same as 30 LKN

32,10 NOV 72P4  
66035,2 2.7



D1 w/ granobl-polyg pl clast

33,10 NOV 72P4  
66035,2 2.7



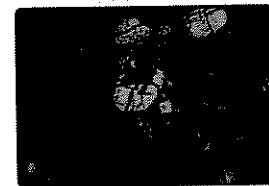
Same as 32 LKN

34,10 NOV 72P4  
66035,2 3.4



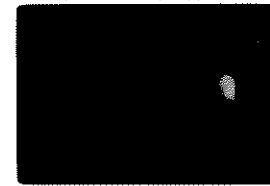
"pl cum. in D1 - prob.  
melt, broken, aug. pl's  
to shock melt along foliation

35,10 NOV 72P4  
66035,2 3.4



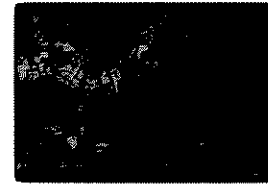
Same as 34 LKN

36,10 NOV 72P4  
66035,2 0.9



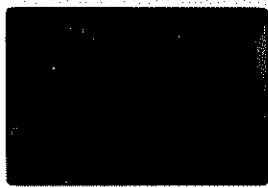
Marginal brecciation of D1?  
(4 ops??) in hornfels clast in  
Aug. of mat. still shock melt

37,10 NOV 72P4  
66035,2 0.9



Same as 36 LKN

1, 11 NOV 72P4  
Luna 16 A16-1B-1 0.7



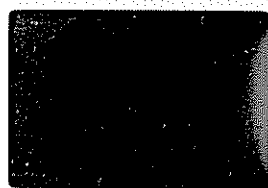
Large pc with dust  
Opx? containing small  
PLS

2, 11 NOV 72P4  
Luna 16 A16-1B-1 0.7



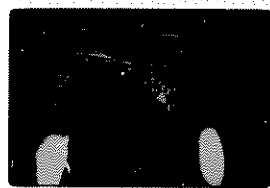
Same as 1 4XN

3, 11 NOV 72P4  
Luna 16 A16-1B-1 0.7



Dust. glass clast in  
dark brown glassy matrix

4, 11 NOV 72P4  
Luna 16 A16-1B-1 0.7



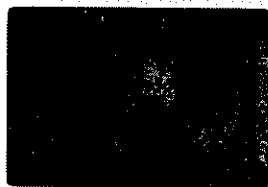
Same as 3 4XN

5, 11 NOV 72P4  
66095, 12 3.4



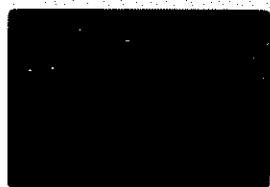
"Embayed" hornfels clast  
in hornfels matrix / opx  
potholes.

6, 11 NOV 72P4  
66095, 12 3.4



Same as 5 4XN

7, 11 NOV 72P4  
66095, 12 2.7



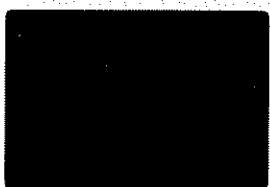
Rectangular pc clast in  
hornfels

8, 11 NOV 72P4  
66095, 12 2.7



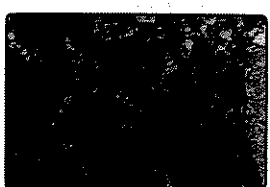
Same as 7 4XN

9, 11 NOV 72P4  
66095, 12 2.7



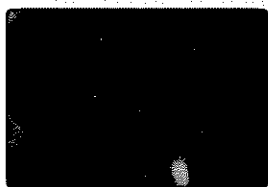
Fragged, embayed hornfels  
clast in hornfels

10, 11 NOV 72P4  
66095, 12 2.7



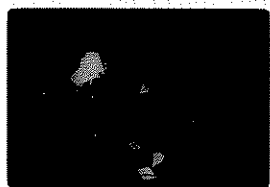
Same as 9 4XN

11, 11 NOV 72P4  
67435, 17 3.4



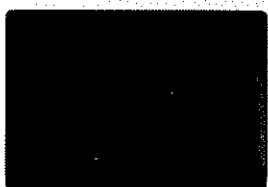
Partly devit. glass w/  
pc frags

12, 11 NOV 72P4  
67435, 17 3.4



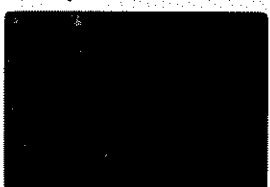
Same as 11 4XN

13, 11 NOV 72P4  
67435, 17 0.9



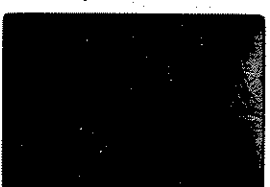
Melt zone texture

14, 11 NOV 72P4  
67435, 17 0.9



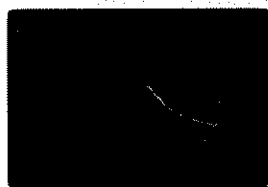
Same as 13 4XN

15, 11 NOV 72P4  
67435, 17 0.7



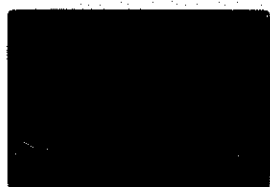
Melt zone texture

16, 11 NOV 72P4  
67435, 17 0.7



Melt zone texture

17, 11 NOV 72P4  
68416 3.4



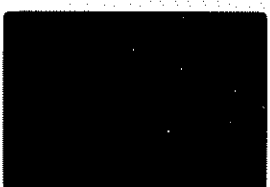
Popo - pc phenos in optit  
zone; ol, opx

18, 11 NOV 72P4  
68416 3.4



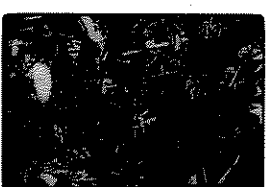
Same as 17 4XN

19, 11 NOV 72P4  
68416 3.4



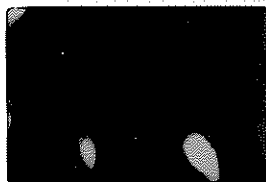
Gen text.

20, 11 NOV 72P4  
68416 3.4



Same as 19 4XN

2, 11 NOV 72P4  
68416 4.2



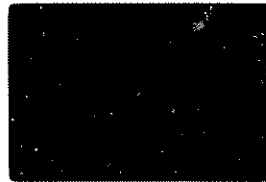
Crin view

22, 11 NOV 72P4  
68416 8.2



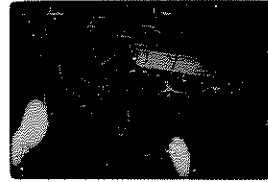
Same as 21 LEXN

23, 11 NOV 72P4  
68416 6.6



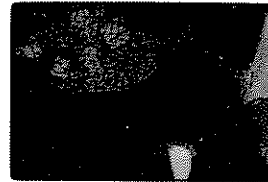
Crin view

24, 11 NOV 72P4  
68416 6.6



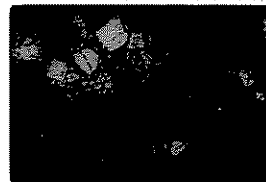
Same as 23 LEXN

25, 11 NOV 72P4  
61015, 5 6.6



White catacl. injec into  
D1 with tiny pl. l. p. res

26, 11 NOV 72P4  
61015, 5 4.6



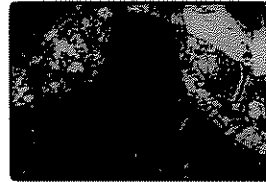
Same as 25 LEXN

27, 11 NOV 72P4  
61015, 5 5.3



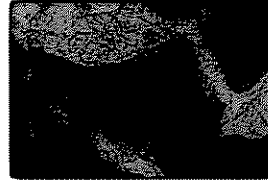
Same as 25 closer

28, 11 NOV 72P4  
61015, 5 5.3



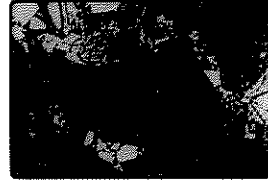
Same as 27 LEXN

29, 11 NOV 72P4  
61015, 5 5.3



Another view

30, 11 NOV 72P4  
61015, 5 5.3



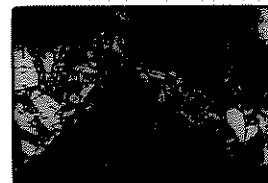
Same as 29 LEXN

31, 11 NOV 72P4  
61015, 5 3.4



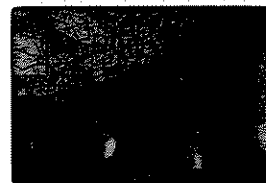
Same as 29 closer

32, 11 NOV 72P4  
61015, 5 3.4



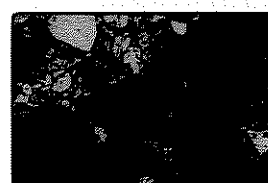
Same as 31 LEXN

33, 11 NOV 72P4  
61015, 5 3.4



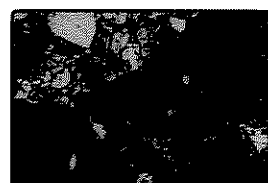
Same, closer

34, 11 NOV 72P4  
61015, 5 3.4



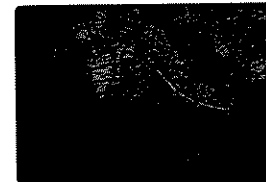
Same as 33 LEXN

35, 11 NOV 72P4  
61015, 5 3.4



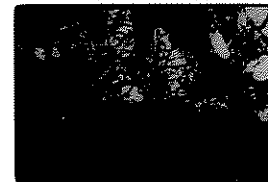
Same as 34

36, 11 NOV 72P4  
61015, 5 2.2



Fine sp. chilled epoptopes  
of dark into G.

37, 11 NOV 72P4  
61015, 5 2.2



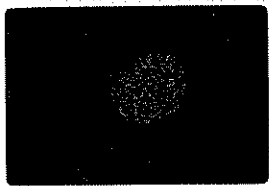
Same as 36 LEXN

1, 12 NOV 72PB  
62295, 2 2.2



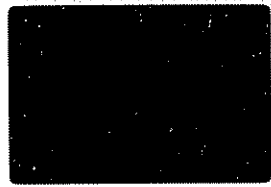
Fluid opx in opt. continuity  
w. pc - opx in horizonally!

2, 12 NOV 72PB  
62295, 2 2.2



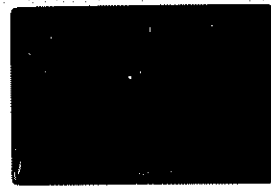
Same as 1 UxN

3, 12 NOV 72PB  
62295, 2 0.9



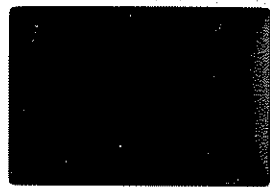
Same as 1 close

4, 12 NOV 72PB  
62295, 2 0.9



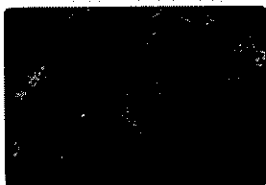
Same as 3 UxN

5, 12 NOV 72PB  
62295, 2 3.4



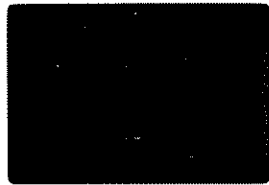
Gen. view

6, 12 NOV 72PB  
62295, 2 3.4



Same as 5 UxN

7, 12 NOV 72PB  
62295, 2 0.9



Gen texture

8, 12 NOV 72PB  
62295, 2 0.9



Same UxN

9, 12 NOV 72PB  
60016, 13 3.4



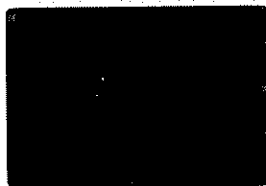
Horizontal in poikilo,  
Mx

10, 12 NOV 72PB  
60016, 13 3.4



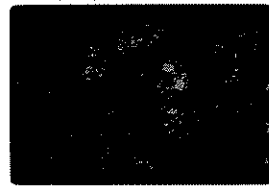
Same UxN

11, 12 NOV 72PB  
60016, 13 2.2



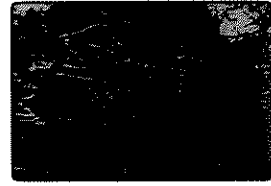
pc joints in poikiloblasts

12, 12 NOV 72PB  
60016, 13 2.2



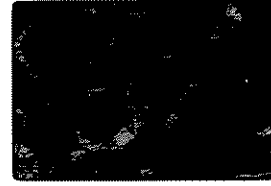
Same as 11 UxN

13, 12 NOV 72PB  
60025, 20 3.4



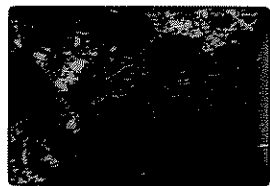
Exptd 4100 microns of  
zpx? in opx

14, 12 NOV 72PB  
60025, 20 0.9



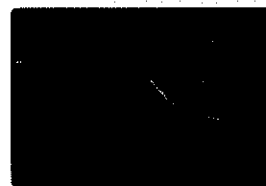
Same as 13 close

15, 12 NOV 72PB  
60025, 20 5.3



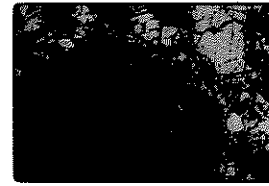
Zone of clustered px

16, 12 NOV 72PB  
60025, 20 6.6



Large cluster pc &  
crystal ol?

17, 12 NOV 72PB  
60025, 20 6.6



Same as 16 UxN

18, 12 NOV 72PB  
60025, 20 8.2



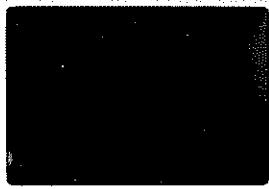
Crushed opx 401? common  
next to pc - pc finer than  
than mafics

19, 12 NOV 72PB  
60025, 20 8.2



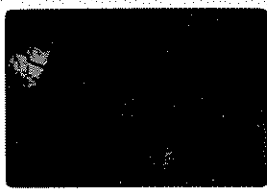
Same as 18 UxN

20, 12 NOV 72PB  
60025, 124 8.2



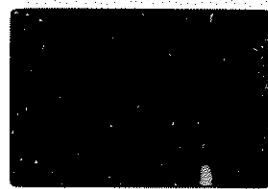
Open voids slightly filled  
spinel in area, small inclusions

21, 12 NOV 72PB  
60025, 124 8.2



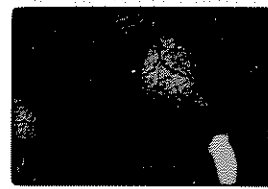
Same as 20 UCN

22, 12 NOV 72PB  
60025, 21 8.2



Crack. Fract. opx w/  
exsol. lam. More oliv  
adj. opx, platt crushed

23, 12 NOV 72PB  
60025, 21 8.2



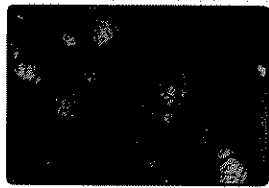
Same as 22 UCN

24, 12 NOV 72PB  
60025, 21 8.2



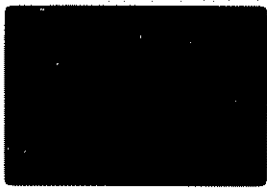
Crack zone; ol lamellae in  
fines, partly melted?

25, 12 NOV 72PB  
60025, 21 8.2



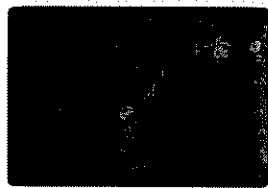
Same as 24 UCN

26, 12 NOV 72PB  
60025, 21 8.2



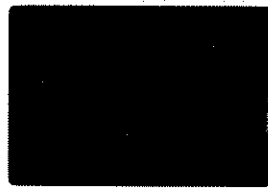
Wavy opx w/ exsol. lam;  
partial loss of pl to rt

27, 12 NOV 72PB  
60025, 21 8.2



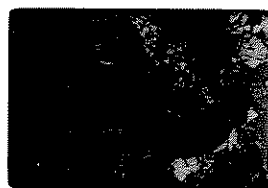
Same as 26 UCN

28, 12 NOV 72PB  
60025, 21 5.3



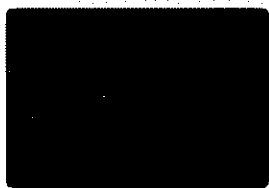
Crack of opx w/ exsol.  
Poss. exsol. opx at  
top?

29, 12 NOV 72PB  
60025, 21 5.3



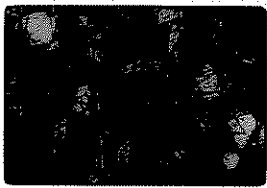
Same as 28 UCN

30, 12 NOV 72PB  
60025, 21 5.3



Crack of bx zone, partial  
loss of ol

31, 12 NOV 72PB  
60025, 21 5.3



Same UCN

32, 12 NOV 72PB  
60025, 21 5.3



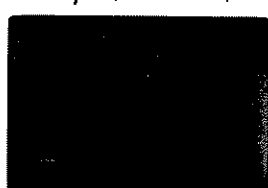
Zone rich in oliv & opx  
w/ exsol. lam.

33, 12 NOV 72PB  
60025, 21 5.3



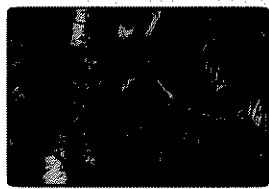
Same UCN

34, 12 NOV 72PB  
60025, 21 3.4 ~~5.3~~



Graphitic & lamellar  
exsol in opx

35, 12 NOV 72PB  
60025, 21 3.4



Same UCN

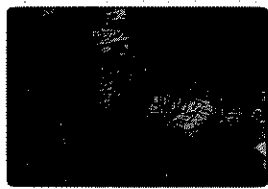
⑧

36, 12 NOV 72PB  
60025, 21 3.4



Bruc. zone, magnetite  
in fines

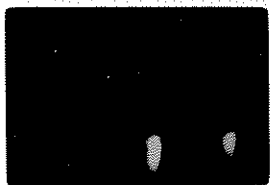
37, 12 NOV 72PB  
60025, 21 3.4



Same as 36 UCN

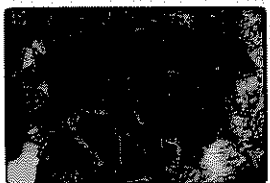


1, 13 NOV 72PB  
60025, 21 2.7



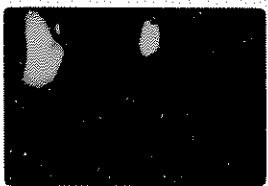
Optical cpx? ni opx

2, 13 NOV 72PB  
60025, 21 2.7



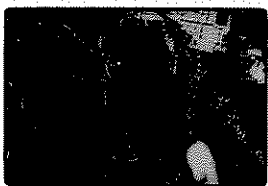
Same UCN

3, 13 NOV 72PB  
60025, 20 0.9



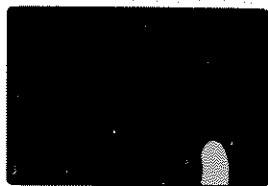
Old lacwork w/ higher  
BF in opx w/ thin cpx  
lam. cpx w/ zones?

4, 13 NOV 72PB  
60025, 20 0.9



Same UCN

5, 13 NOV 72PB  
60025, 20 0.9



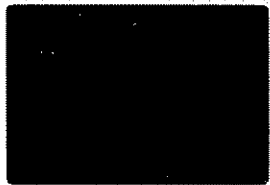
Crack zones across opx  
w/ cpx, lam.

6, 13 NOV 72PB  
60025, 20 0.9



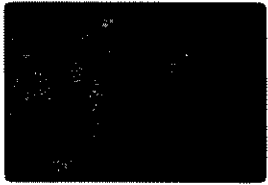
Same as 5 UCN

7, 13 NOV 72PB  
66095, 12 0.9



Typ "ophit" pc lathes  
end in px prisms

8, 13 NOV 72PB  
66095, 12 0.9



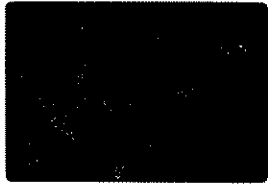
Same UCN

9, 13 NOV 72PB  
66095, 12 0.9



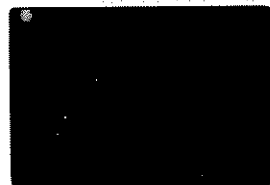
Another "ophit" area

10, 13 NOV 72PB  
66095, 12 0.9



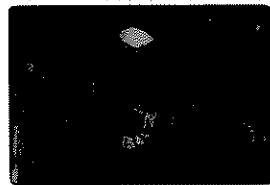
Same UCN

11, 13 NOV 72PB  
65095, 13 0.7



"ophit" patch grades into  
Poikilobl.

12, 13 NOV 72PB  
65095, 13 0.7



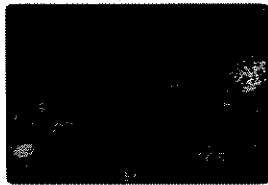
Same as 11 UCN

13, 13 NOV 72PB  
65095, 14 0.7



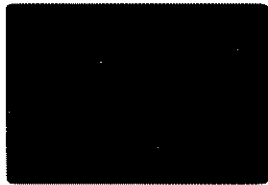
Mixed hornfels & pc lathes  
& textures

14, 13 NOV 72PB  
65095, 14 0.7



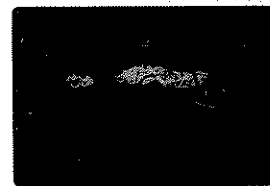
Same UCN

15, 13 NOV 72PB  
67435, 15 0.9



Recll 12 track cleat

16, 13 NOV 72PB  
67435, 15 0.9



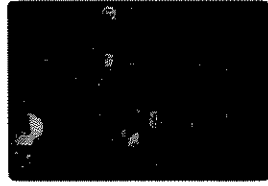
Same UCN

17, 13 NOV 72PB  
67435, 15 2.7



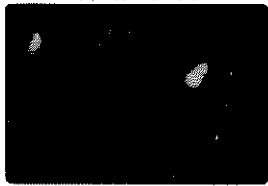
Metaclastic cleat  
By bx - white cleat in dot  
hornfels area

18, 13 NOV 72PB  
67435, 15 2.7



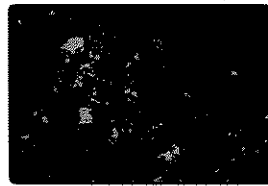
Same UCN

19, 13 NOV 72PB  
67435, 15 2.7



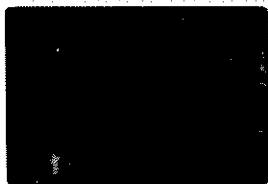
Hornfels & crossbed pc  
cleats

20, 13 NOV 72PB  
67435, 15 2.7



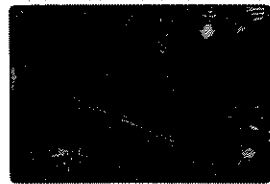
Same UCN

21,13 NOV 72PB  
67435,15 0.7



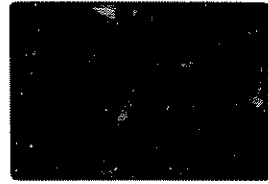
Porph. texture w/pe  
laths

22,13 NOV 72PB  
67435,15 0.7



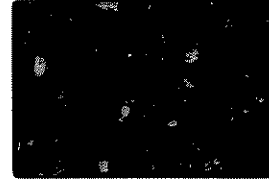
Same LKN

23,13 NOV 72PB  
60019,13 8.2



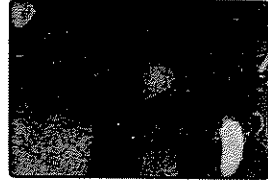
Gen

24,13 NOV 72PB  
60019,13 8.2



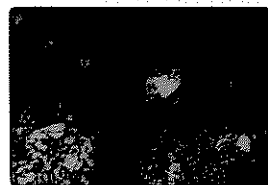
Same LKN

25,13 NOV 72PB  
60019,13 ~~2.7~~



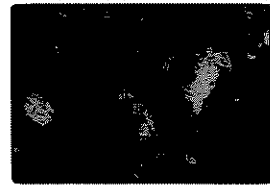
Coarser optit. & coarse  
"amorph" clasts

26,13 NOV 72PB  
60019,13 2.7



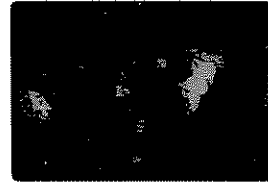
Same LKN

27,13 NOV 72PB  
60019,13 2.2



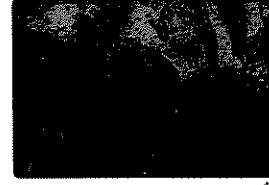
Dl clast w/ pe porphyro-  
clasts in optit. porph. texture

28,13 NOV 72PB  
60019,13 2.2



Same LKN

29,13 NOV 72PB  
60115,9 3.4



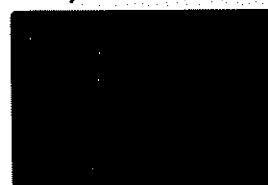
DK clast w/ glass clast in  
mx of optit. flow + amorph  
Note 1/2 in glass vein

30,13 NOV 72PB  
60115,9 3.4



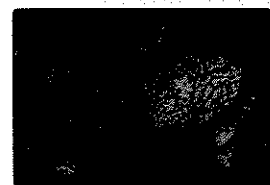
Same LKN

31,13 NOV 72PB  
60115,9 3.4



Relict pe in partly melted  
(w/ amorph) clast. pe & relict  
pe w/ optit. clastic flow streak

32,13 NOV 72PB  
60115,9 3.4



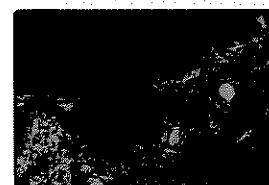
Same LKN

33,13 NOV 72PB  
60115,9 3.4



Dark clast, pe relict + inter-  
banded clast melt +  
contact. flow

34,13 NOV 72PB  
60115,9 3.4



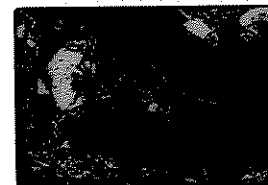
Same LKN

35,13 NOV 72PB  
60115,9 3.4



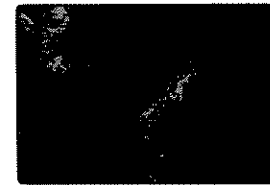
Like 33; injec. into  
broken clast

36,13 NOV 72PB  
60115,9 3.4



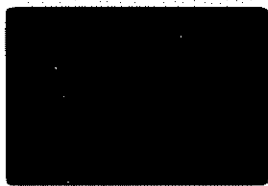
Same LKN

37,13 NOV 72PB  
60115,9 0.9



LKN - close of injec in  
no. 35

1,14 NOV 72P4  
60215,14 3.4



Hypoclast "clinocline" frags  
& large pc w/ opx incl

2,14 NOV 72P4  
60215,14 3.4



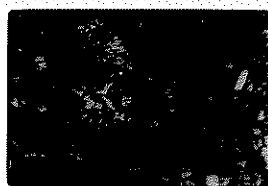
Same UCN

3,14 NOV 72P4  
60215,14 2.2



"Intermittent basalt"  
clasts

4,14 NOV 72P4  
60215,14 2.2

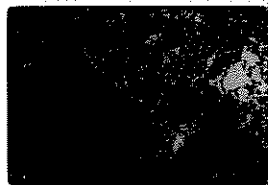


Same UCN

5 NOV 72P4

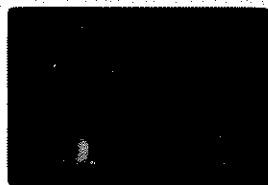


6,14 NOV 72P4  
60215,14 8.2



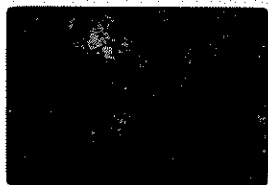
UCN from Visc

7,14 NOV 72P4  
60215,14 8.2



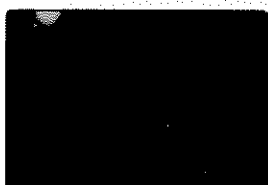
~~U. clinocline~~  
Basalt clasts - gen  
VISC

8,14 NOV 72P4  
60215,14 8.2



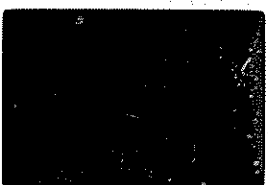
Same UCN

9,14 NOV 72P4  
60215,14 0.9



Stellate pc clast  
Green black w/ "clinocline"  
& large pc clasts

10,14 NOV 72P4  
60215,14 0.9



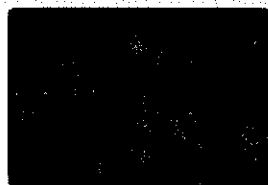
Same UCN

11,14 NOV 72P4  
60255,13 2.2



main porphyroblast hornblende  
Stellate pc clast, pc w/  
intermittent opx clast

12,14 NOV 72P4  
60255,13 2.2



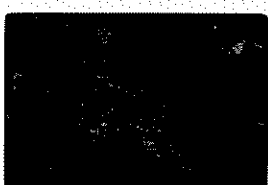
Same UCN

13,14 NOV 72P4  
60255,13 3.4



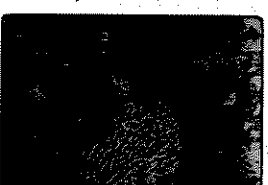
Granoblastic  
~~hornblende~~ porphyroblast  
hornblende. x11 w/ spinel  
vac.

14,14 NOV 72P4  
60255,13 3.4



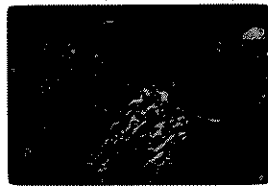
Same UCN

15,14 NOV 72P4  
60255,14 0.9



Flow banded cp & bas  
clast

16,14 NOV 72P4  
60255,14 0.9



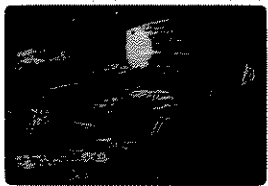
Same UCN

17,14 NOV 72P4  
60255,14 0.9



Same as 15 UCN

18,14 NOV 72P4  
60255,14 0.9



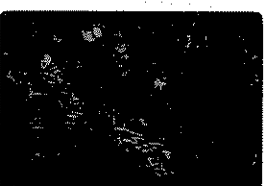
Same UCN

19,14 NOV 72P4  
60255,14 3.4



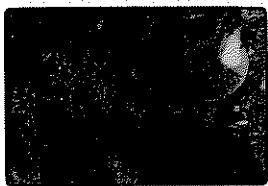
"vesicle phase" clast,  
2 Di clasts, one rounded?

20,14 NOV 72P4  
60255,14 3.4



Same UCN

21,14 NOV 72P4  
60255,14 0.7



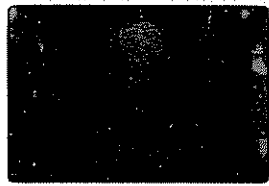
Poikilobl. clasts of dust  
glass texture

22,14 NOV 72P4  
60255,14 0.7



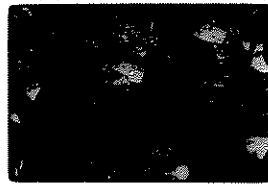
Same LKN

23,14 NOV 72P4  
60275,13 3.4



DIs in brownish glassy  
mx, pellets, debris, brown  
glass veins

24,14 NOV 72P4  
60275,13 3.4



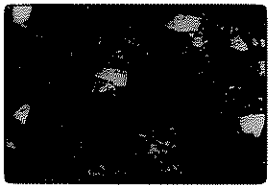
Same LKN

25,14 NOV 72P4  
60275,14 3.4



Repeat 23

26,14 NOV 72P4  
60275,14 3.4



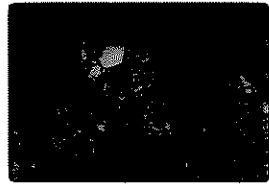
Same LKN

27,14 NOV 72P4  
60275,14 3.4



Clast of black & white  
debris - 3 B, 2 white

28,14 NOV 72P4  
60275,14 3.4



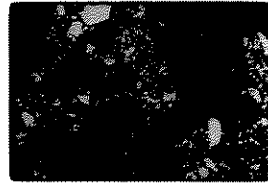
Same as 27 LKN

29,14 NOV 72P4  
60275,14 2.7



Same as 27 LKN

30,14 NOV 72P4  
60275,14 3.7



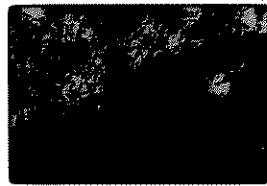
Same LKN

31,14 NOV 72P4  
60275,14 0.9



Close up of cut latex  
blk strip & white

32,14 NOV 72P4  
60275,14 0.9



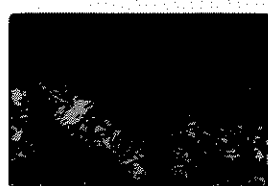
Same LKN

33,14 NOV 72P4  
60275,14 0.9



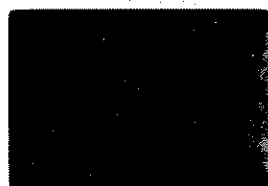
Another close up - more  
of needles in this DI

34,14 NOV 72P4  
60275,14 0.9



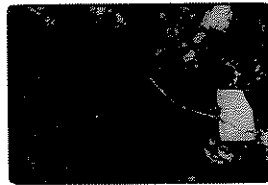
Same LKN

35,14 NOV 72P4  
60275,15 0.9



Pale yellow glass clasts  
marginal dust.

36,14 NOV 72P4  
60275,15 0.9



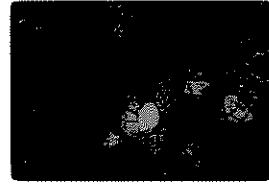
Same, LKN

37,14 NOV 72P4  
61015,5 2.2



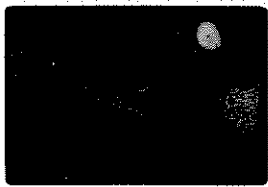
Pink spots granules - poly-  
encrusted clast, interstitial  
mx

38,14 NOV 72P4  
61015,5 2.2



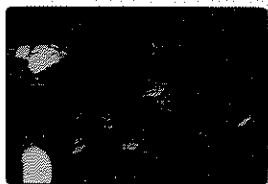
Same as 37 LKN

1,15 NOV 1955  
61015,6 3.4



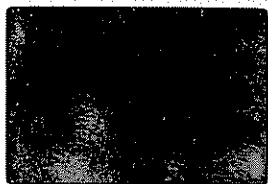
Pl-nicholite - pl frags  
same size as vein -  
diluted

2,15 NOV 1955  
61015,5 3.4



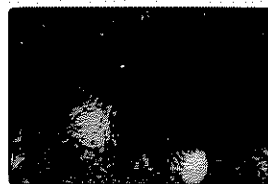
Same as 1

3,15 NOV 1955  
61015,7 3.4



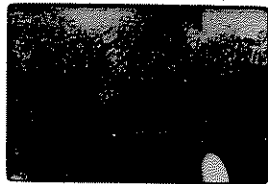
Drk LOI(?) intrusive into  
white

4,15 NOV 1955  
61015,7 3.4



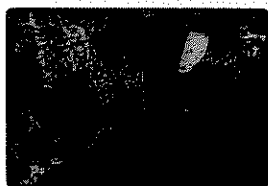
Same as 3

5,15 NOV 1955  
61015,7 3.4



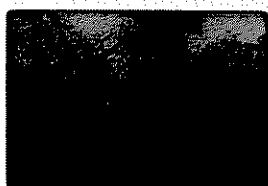
Frags of Drk in white  
& small of pl in the Drk

6,15 NOV 1955  
61015,7 3.4



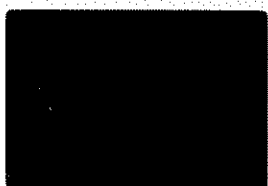
Same as 5

7,15 NOV 1955  
61015,7 3.4



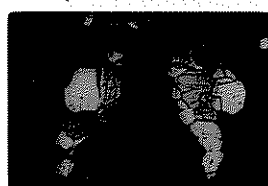
Same as 5

8,15 NOV 1955  
61135,7 2.7



Granobl. Polygonal app.  
of pl

9,15 NOV 1955  
61135,7 2.7



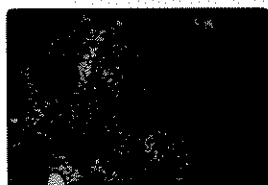
Same as 8  
③

10,15 NOV 1955  
61135,7 3.4



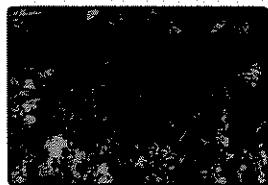
Granobl-polyg. relict  
relict pl. mdfys are ol?  
cpx

11,15 NOV 1955  
61135,7 3.4



Same as 10

12,15 NOV 1955  
61135,7 2.2



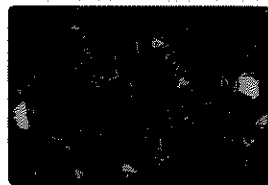
LN - close-up relict pl  
w/ strings of granobl.  
pl along it

13,15 NOV 1955  
61135,7 0.9



D2? coarse pl than  
usu.

14,15 NOV 1955  
61135,7 0.9



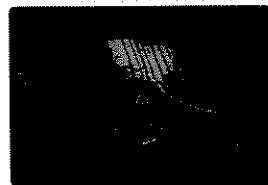
Same as 13

15,15 NOV 1955  
61135,7 2.2



D2 w/ poikilobl. opx?,  
relict pl

16,15 NOV 1955  
61135,7 2.2



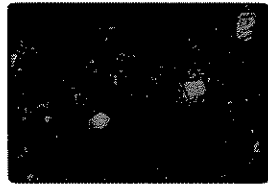
Same as 15

17,15 NOV 1955  
61135,7 2.2



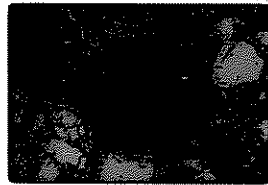
D1 - like #15, more mafic

18,15 NOV 1955  
61135,7 2.2



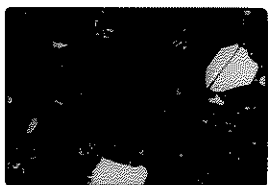
Same as 17

19,15 NOV 1955  
61135,7 0.6



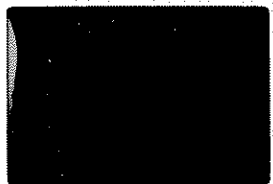
Teardrop D1

20,15 NOV 1955  
61135,7 0.6



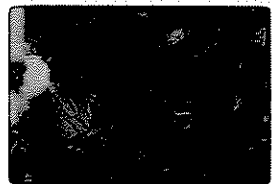
Same as 19

21, 15 NOV 1985  
61135,7 0.9



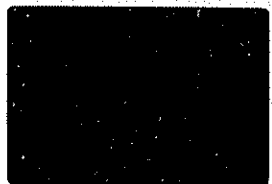
"Vesicle phase" clast

22, 15 NOV 1985  
61135,7 0.9



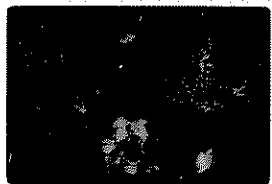
Same as 21

23, 15 NOV 1985  
61135,7 8.2 ~~0.9~~



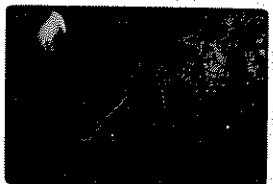
Gen. view

24, 15 NOV 1985  
61135,7 8.2



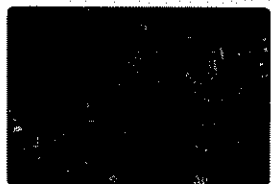
Same as 23

25, 15 NOV 1985  
61155,6 8.2



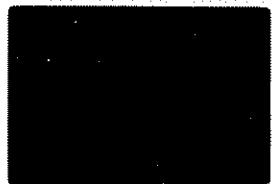
Gen. view

25, 15 NOV 1985  
61155,6 8.2



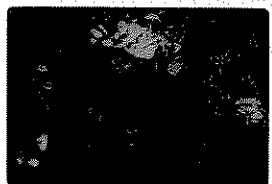
Same as 25

27, 15 NOV 1985  
61155,6 2.2



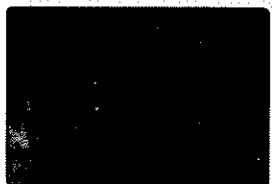
Contact, anathox. attachment  
DI-anathox. protorelict

27, 15 NOV 1985  
61155,6 2.2



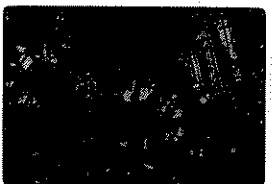
Same as 27

28, 15 NOV 1985  
61155,6 3.4



DI's broken surrounded  
by former pl. clasts

30, 15 NOV 1985  
61155,6 3.4



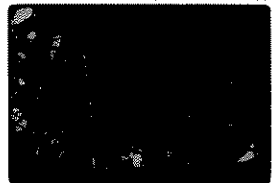
Same as 25

31, 15 NOV 1985  
61155,6 3.4



Clast of vesicle phase in  
DI clast, per se

32, 15 NOV 1985  
61155,6 3.4



Same as 31

33, 15 NOV 1985  
62236,5 2.2



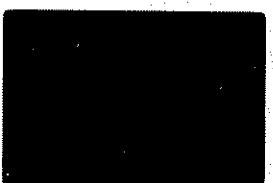
"Graphic" intergrowths of crystals  
in apix & thick residual  
lamellae

34, 15 NOV 1985  
62236,5 2.2



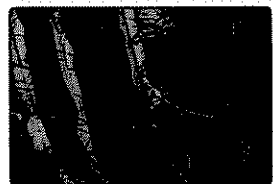
Same as 33

35, 15 NOV 1985  
62236,5 0.9



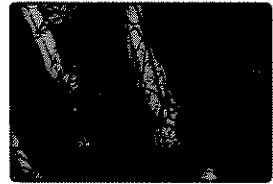
Same as 33 closer. Note  
persistent strat. lamellae -  
U. film - pass graphic intergrowths

35, 15 NOV 1985  
62236,5 0.9



Same as 35

35, 15 NOV 1985  
62236,5 ~~0.9~~



Same view, closer