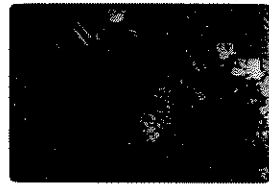


1,16 NOV 72P3
62236,5 2.2



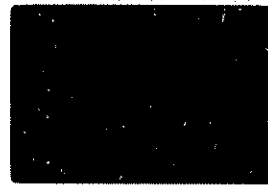
Coarse "lam." & round
"incl" in opx. maybe
lamellae and voids

2,16 NOV 72P3
62236,5 2.2



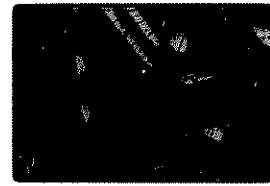
Same as 1

3,16 NOV 72P3
62236,5 0.9



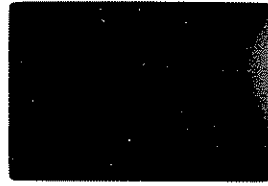
Close-up of 1. Note opt
fol || lamellae

4,16 NOV 72P3
62236,5 0.9



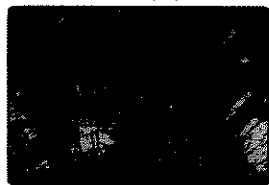
Same as 3

5,16 NOV 72P3
62236,5 3.4



More coarse & incl.
Note incl trains in pl

6,16 NOV 72P3
62236,5 3.4



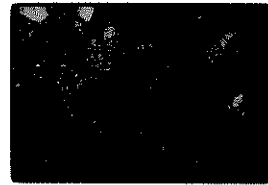
Same as 5

7,16 NOV 72P3
62236,5 8.2



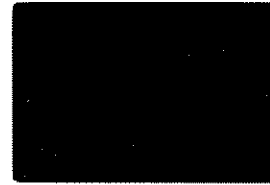
Gen view

8,16 NOV 72P3
62236,5 8.2



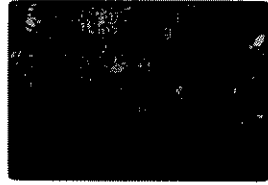
Same as 7

9,16 NOV 72P3
62236,5 ~~8.2~~
8.2



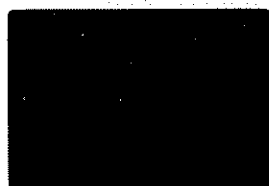
Gen. View

10,16 NOV 72P3
62236,5 8.2 ~~8.2~~



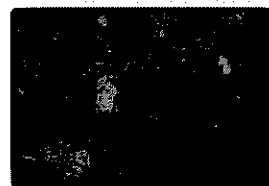
Same as 9

11,16 NOV 72P3
62237,8 ~~8.2~~
8.2



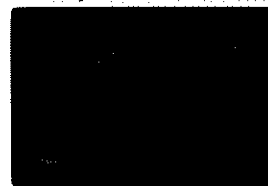
Gen view cataclastic
troctolite

12,16 NOV 72P3
62237,8 8.2 ~~8.2~~



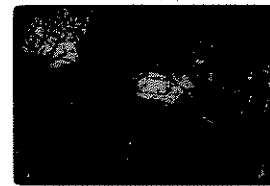
Same as 11

13,16 NOV 72P3
62237,8 5.3 ~~5.3~~



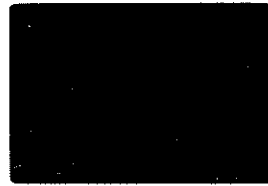
Gen. View

14,16 NOV 72P3
62237,8 5.3



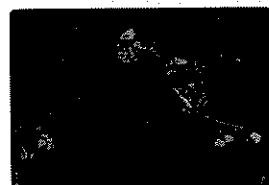
Same as 13

15,16 NOV 72P3
62237,8 3.4



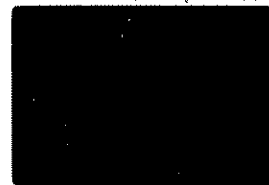
Breakdown of Oliv

16,16 NOV 72P3
62237,8 3.4



Same as 15

17,16 NOV 72P3
62237,8 3.4



Breakdown of Oliv

18,16 NOV 72P3
62237,8 3.4



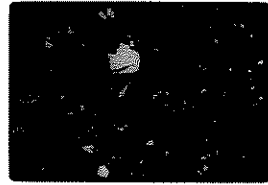
Same as 17

19,16 NOV 72P3
63505,13 3.4



Typ. texture

20,16 NOV 72P3
63505,13 3.4



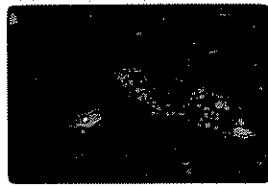
UCN-19

21,16 NOV 72P3
63505,13 2.7



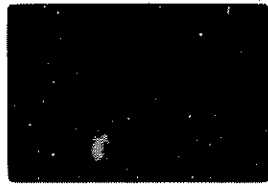
Granobl. polyh. px (+
minor matrix) & intergran.
clasts

22,16 NOV 72P3
63505,13 2.7



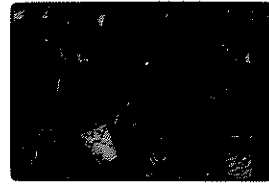
Same UxN

23,16 NOV 72P3
63506,13 0.9



Pc debris in intergran.
shock melt

24,16 NOV 72P3
63506,13 0.9



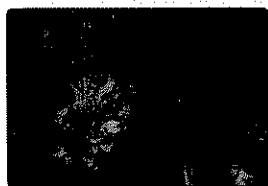
Same UxN

25,16 NOV 72P3
63506,13 0.9



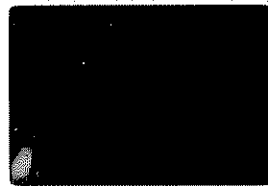
Pc debris in intergran.
shock melt

26,16 NOV 72P3
63506,13 0.9



UxN

27,16 NOV 72P3
63506,13 0.9



Hornfels cleft, weak
flow struc in intergran.
mx

28,16 NOV 72P3
63506,13 0.9



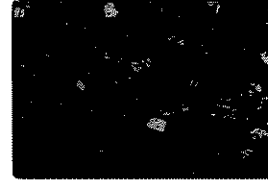
UxN

29,16 NOV 72P3
63506,13 2.7



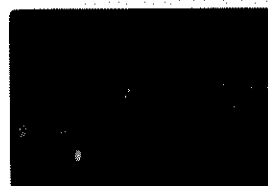
Gen view

30,16 NOV 72P3
63506,13 2.7



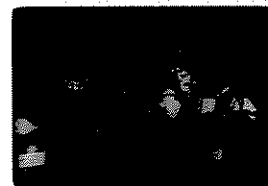
UxN

31,16 NOV 72P3
63507,13 0.7



Intergranular basal frag

32,16 NOV 72P3
63507,13 0.7



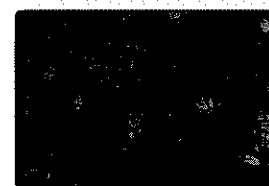
UxN

33,16 NOV 72P3
63507,13 0.9



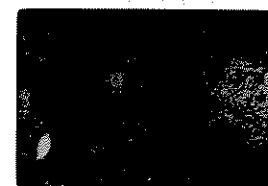
Granobl. polyhedra
w/ peridotite debris - round
oliv inclusions in px

34,16 NOV 72P3
63507,13 0.9



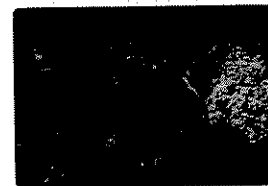
UxN

35,16 NOV 72P3
63507,13 3.4



Gen. view

36,16 NOV 72P3
63507,13 3.4



UxN

37,16 NOV 72P3
64435,6 2.2



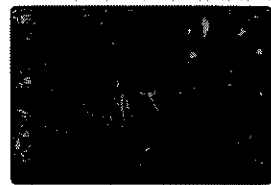
Ent. cataclastic & D1 w/ weak
flow struc., peridotite, text.
Round flow-band, D1 in this

1,17
64435,6 2.2



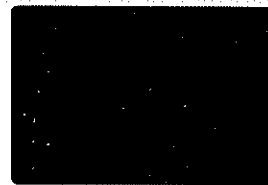
Same as 14,37

2,17
64435,6 2.2



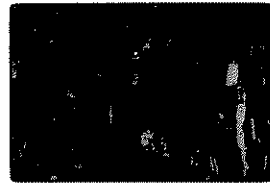
UXN

3,17
64435,6 0.4



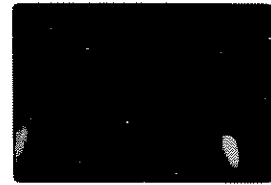
Same as 14,37

4,17
64435,6 0.4



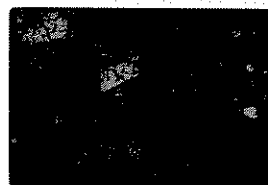
UXN

5,17
64435,6 3.4



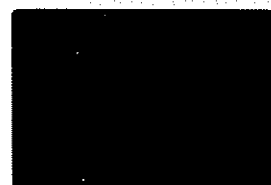
Cataclastic - D1 contact
Note exsol. in opx

6,17
64435,6 3.4



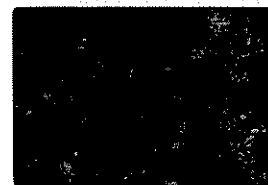
UXN

7,17
64435,6 3.4



Crushed oliv "matrix"
for crushed pc

8,17
64435,6 3.4



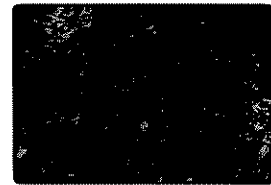
UXN

9,17
64435,6 8.2 ~~0.4~~



Cataclastic flow struc
Prob. troctolite

10,17
64435,6 8.2 ~~0.4~~



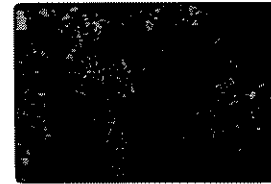
Same 9 UXN

11,17
64477,13 8.2



Gen views. D1 (ex vein)
w/ attach. cataclastic - all
kib broken & on glossy var

12,17
64477,13 8.2



Same UXN

13,17
64477,13 0.9



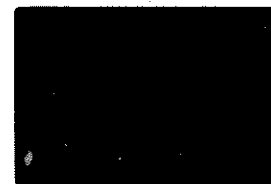
D1 porphyloblast. w/ local
patches & stringers of
interstitial text.

14,17
64477,13 0.9



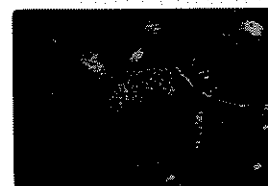
UXN

15,17
64477,13 0.7



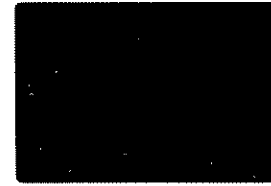
Embedded, ragged oliv.
w/ opx rim

16,17
64477,13 0.7



Same UXN

17,17
64477,13 0.7



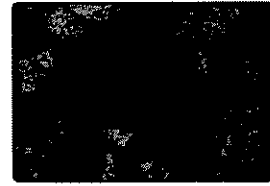
3 olivs in various stages
of repl.

18,17
64478,13 2.7



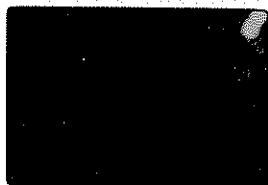
Marginal devel. hornfels
text. where matrix abundant.
Relict coarse pl; glass veins

19,17
64478,13 2.7



UXN

20, 17 NOV 1985
?61015, 13 3.4



Hornfels clast & pc debris
in coarse poikilobl. of opx
& cpx?

2, 17 NOV 1985
61015, 13 3.4



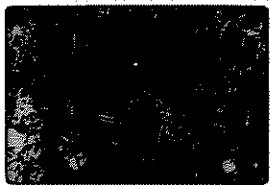
UxN

22, 17 NOV 1985
61015, 13 0.9



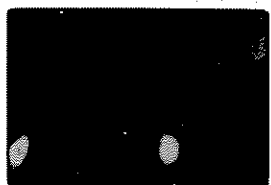
Patch intergran. "basal";
lathes project into
poikiloblasts

28, 17 NOV 1985
61015, 13 0.9



UxN

24, 17 NOV 1985
61015, 13 0.7



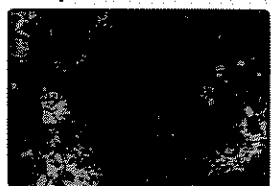
Patch intergranular "basal"
in interstices of poikilobl.
or clast

20, 17 NOV 1985
61015, 13 0.7



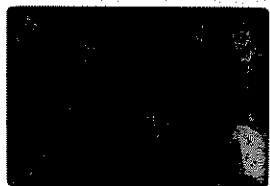
UxN

28, 17 NOV 1985
?61015, 13 0.9



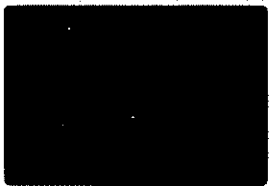
UxN, Zoned, vix. pc
debris. Note marginal
indentation by px5

27, 17 NOV 1985
65035, 8 3.4



UxN, Annealed late-
clastic anorthosite

28, 17 NOV 1985
65035, 8 3.4



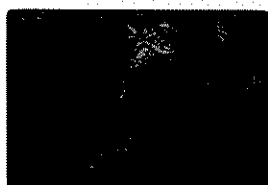
UxN

25, 17 NOV 1985
65055, 13 3.4



Gran. texture

30, 17 NOV 1985
65055, 13 3.4



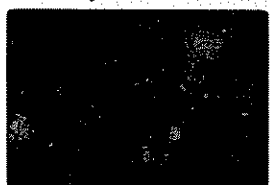
UxN

31, 17 NOV 1985
65075, 9 3.4



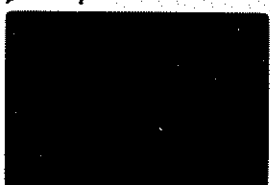
Grad. from intergranular
interst. w/ pc debris
to med. ophit. texture

32, 17 NOV 1985
65075, 9 3.4



UxN

33, 17 NOV 1985
65075, 9 8.2



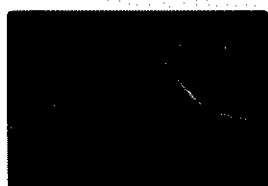
Patchy text. glass - fine gr.
flow banded interst. -
fine zone - coarse ophit.

34, 17 NOV 1985
65075, 9 8.2



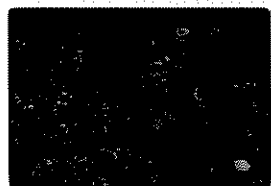
UxN

3, 17 NOV 1985
65075, 9 6.6



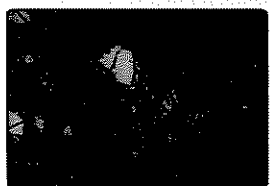
melt zone - complex edge
(new pbs) from coronary part.
melt in ophit. zone; glass veins

3, 17 NOV 1985
65075, 9 6.6



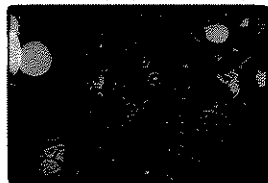
UxN

3, 17 NOV 1985
65075, 9 5.3



Devit. opx & flow banded
in interst. zone w/ coarse
pc debris

1, 18 NOV 1955
65025, 9 3.4



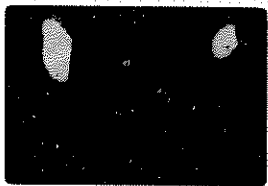
Partial melting of ophiolite zone. Glass with 20% de-vit.

2, 18 NOV 1955
65075, 9 3.4



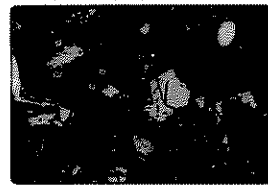
U-X-N

3, 18 NOV 1955
65095, 13 0.9



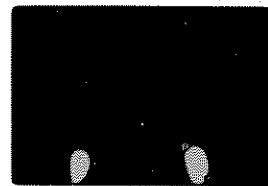
PC pyroclasts in amorphous matrix with 20% spongy periklilasts

4, 18 NOV 1955
65095, 13 0.9



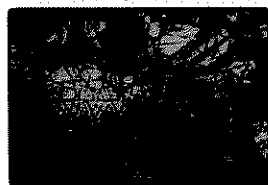
U-X-N

5, 18 NOV 1955
65315, 4 8.2



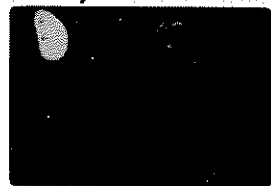
Gen. view amorphous (trapped) cataclaste

6, 18 NOV 1955
65315, 4 8.2



U-X-N

7, 18 NOV 1955
66035, 5 3.4



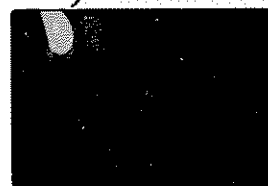
Gen. view

8, 18 NOV 1955
66035, 5 3.4



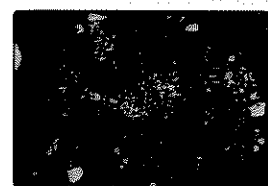
U-X-N

9, 18 NOV 1955
67015, 25 3.4



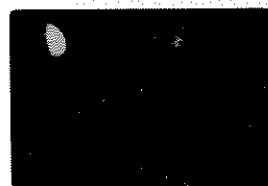
D1 clast enclosing unreddish white catcl. enclosing D2. Note of fresh top of white

10, 18 NOV 1955
67015, 25 3.4



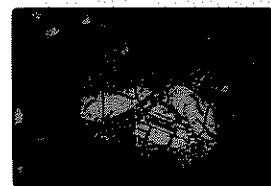
U-X-N

11, 18 NOV 1955
67015, 26 2.7



Old hornfels clast - relict cataclaste?

12, 18 NOV 1955
67015, 26 2.7



U-X-N

13, 18 NOV 1955
67015, 26 0.9



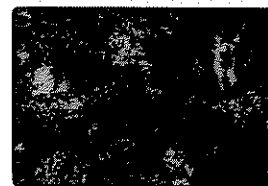
Vitroplugs spherule & spinelle in opx & pc

14, 18 NOV 1955
67025, 13 2.7



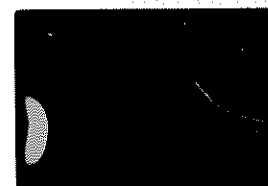
Ang. pc in ophiolite - all pc's -> maskelynite

15, 18 NOV 1955
67025, 13 2.7



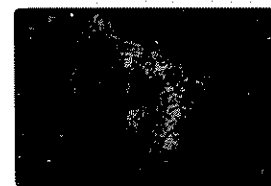
U-X-N

16, 18 NOV 1955
67035, 15 3.4



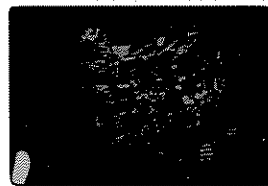
Brown clint glass clast enclosing catcl. pc w/ band of polyg. pc

17, 18 NOV 1955
67035, 15 3.4



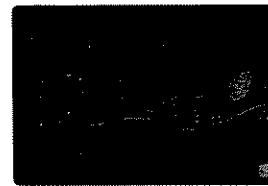
U-X-N

18, 18 NOV 1955
67035, 15 2.7



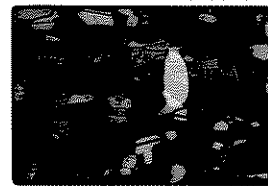
U-X-N Foliated meta-anorthosite - all pc

19, 18 NOV 1955
67035, 15 0.9



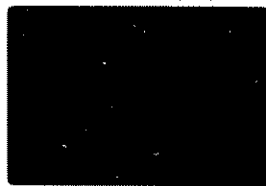
Close up of 18

20, 18 NOV 1955
67035, 15 0.9



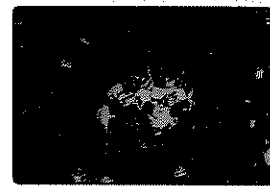
Close up of 18

21, 18 NOV 1955
67035, 15 2.7



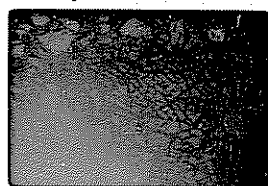
Granul. polyg. hornfels -
Horn & Oliv in thin rim of
opx

22, 18 NOV 1955
67035, 15 2.7



UXXN

23, 18 NOV 1955
67075, 52 0.9



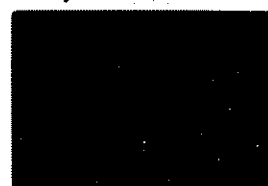
Cpx - hornfels of rel
text?

24, 18 NOV 1955
67075, 52 0.9



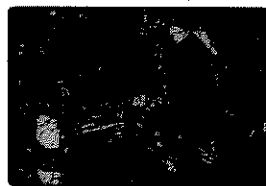
UXXN

25, 18 NOV 1955
67075, 52 8.2



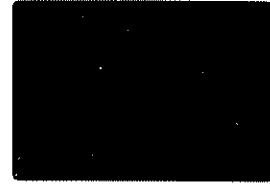
Granules; small patches
granul. in relic of pc &
isotaxial. Dark in matrix

18
67075, 52 8.2



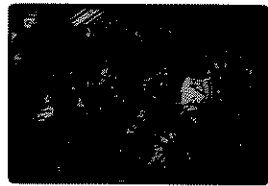
UXXN

18
67075, 52 3.4



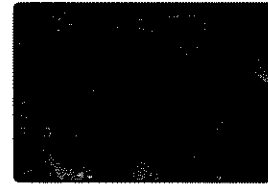
Strings of crushed px; clots
of hornfels in ground mass.
Dark may be mafic mingling

18
67075, 52 3.4



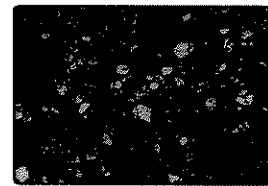
UXXN

18
67075, 52 3.4



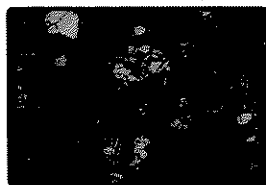
Patches crushed, partly fused?
in intensely textured cpx -
not strong text

18
67075, 52 3.4



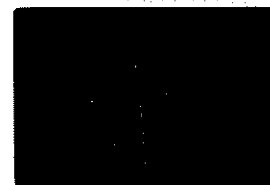
UXXN

31, 18 NOV 1955
67075, 52 3.4



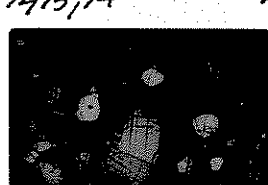
UXXN Patches hornfels big px
stone isol. of hornfels
shows origin hornfels clots

32, 18 NOV 1955
67415, 14 2.7



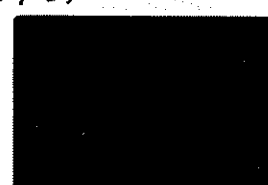
Granul. polyg. clast of hornfels
Oliv and hornfels in cpx?
w. cpx? wavy texture

33, 18 NOV 1955
67415, 14 2.7



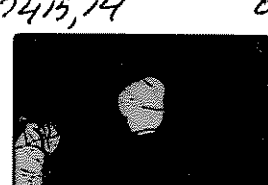
UXXN

34, 18 NOV 1955
67415, 14 0.7



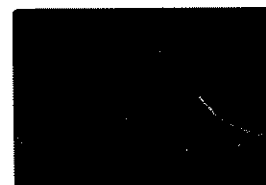
Close up rim of hornfels
by cpx w. wavy texture?

35, 18 NOV 1955
67415, 14 0.7



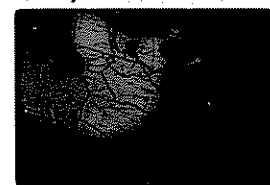
UXXN

18
67415, 14 0.9



Thin rim of hornfels in rim of
hornfels clast

18
67415, 14 0.9



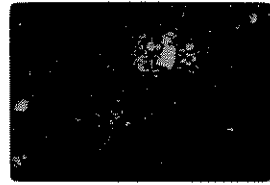
UXXN

1,19 NOV 72PB
67415,14 8.2



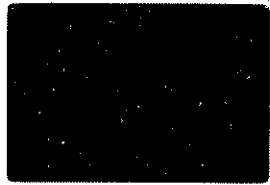
Gen view

2,19 NOV 72PB
67415,14 8.2



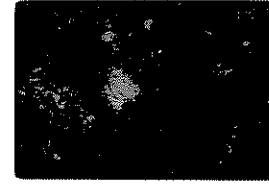
UXN

3,19 NOV 72PB
67435,15 0.9



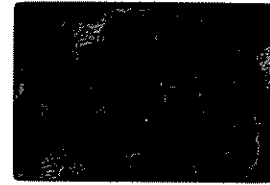
Typ. poikilobl. texture w/
pelets, rounded oliv &
oliv or spinel

4,19 NOV 72PB
67435,15 0.9



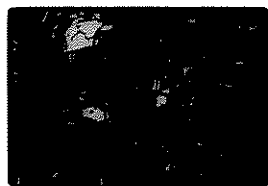
UXN

5,19 NOV 72PB
67735,13 0.9



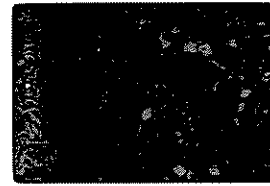
Patches w/ interst. texture
in brownish mix (dmit? gl's?)
v. fine granobl.

6,19
67735,13 0.9



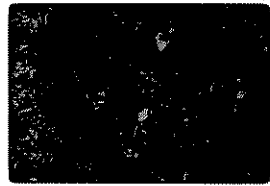
UXN

7,19
67936,13 8.2



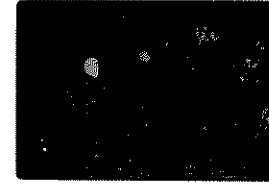
Ophit zone → narrow chilled
granobl zone → vt granobl
w/ xl debris, glass veins

8,19
67936,13 2.2



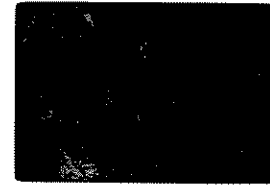
UXN

9,19
67936,13 0.7



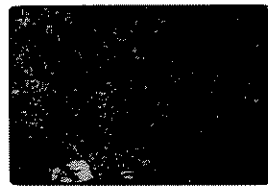
Spalling of round frags
into glass veins

10,19
67937,13 3.4



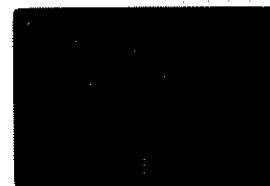
Grad. ophit → interst

11,19 NOV 72PB
67937,13 3.4



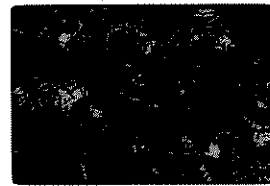
UXN

12,19 NOV 72PB
67937,13 0.9



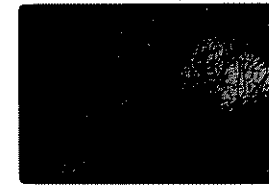
Small pe clast, partly melted
xll's to lathes (some irreg.
reliefs) in ophit mix

13,19 NOV 72PB
67937,13 0.9



UXN

14,19 NOV 72PB
67937,14 3.4



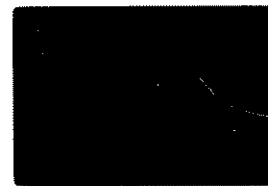
Fine interst. clast in
interst. zone. Pe's at bc
& clast edge

15,19 NOV 72PB
67937,14 3.4



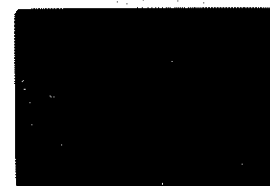
UXN

16,19
67937,14 0.9



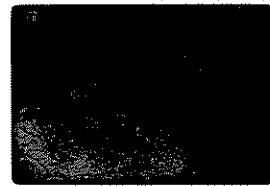
Broken, partly melted pe
frag, newly xll's to lathes

17,19
67937,14 0.9



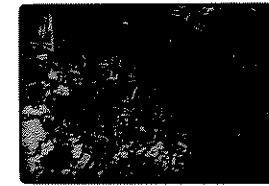
Same as 16 showing marg-
inal lathes on large pe crst
into ophit mix

18,19
67946,13 3.4



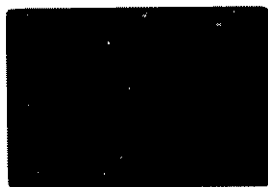
Metacrust, amorphous, on parts,
xll's, melt zone; local sub-
ion in rlc → interst. text.

19,19
67946,13 3.4



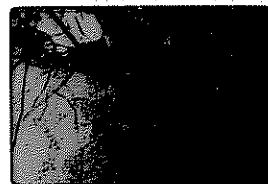
UXN

19, 19
67946, 13 0.7



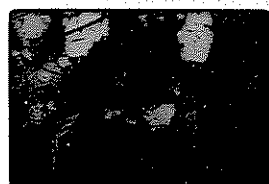
Intersect. text. devel. at
exposure of broken pc's
in metaclastic frags

19, 19
67946, 13 0.7



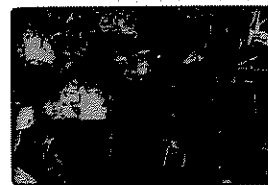
UXN

19, 19
67946, 13 0.9



Punctate, circular cavity
in hornfels' prt of ground
is lat. texture of # 20

19, 19
67946, 13 0.9



UXN Another view, like
#22. Small metaclastic
frag 1301. in melt zone

19, 19
67945, 13 0.9



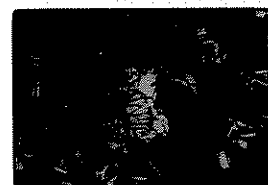
UXN. Circular cavities
cut across angle xls in
melt zone

19, 19
67948, 15 2.2



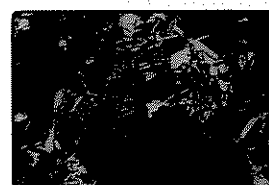
Gen. texture, O.P. made
by Opx? interstit. sil
plates or glass

19, 19
67948, 15 2.7



UXN

19, 19
67948, 15 2.7



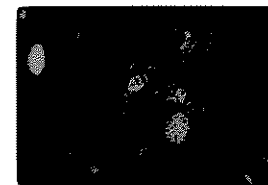
UXN Another view, cpx?
Opx? enclosing pc

19, 19
68815, 18 0.9



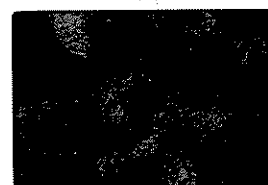
Foliated f.g. hornfels
UXN

19, 19
68815, 18 0.9



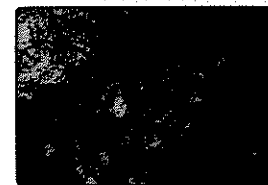
Puddle w/ intersectal text.
in f.g. gneiss-like met.

19, 19
68815, 18 3.4



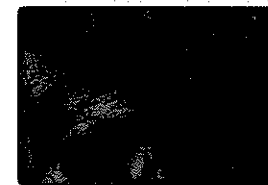
"Gabbroic" (text?) vlc w/
extensive mafic break-
down to Opxs

19, 19
68815, 18 3.4



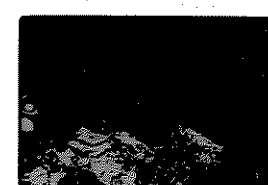
UXN

19, 19
68815, 18 2.7



Banded part, melted brown
metaclastic + white
amorphous mat. - lat. l.?

19, 19
68815, 18 3.4



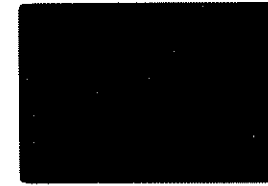
Complex flow stage, big
pc folia in white areas

19, 19
68815, 18 3.4



Flow stage. Darkest brown
not devt.

19, 19
67952, 13 3.4



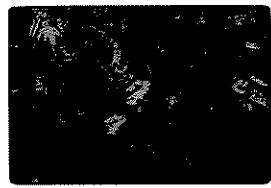
Opx? bas. w/ some opx
Opx? incl. pc, some pc w/
incl

1,20 NOV72PB
67956,13 3.4



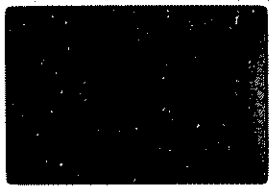
Ophitibaz. w/ some opx
ophit. inclusion pc.

2,20 NOV72PB
67956,13 3.4



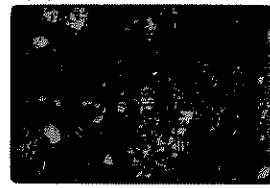
UxN

3,20 NOV72PB
67975,14 3.4



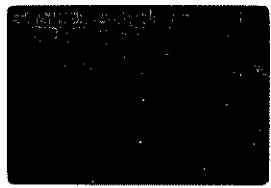
Catacl. gabbro w/
relictic pc. attached to D1
spinel, norite, in D1

4,20 NOV72PB
67975,14 3.4



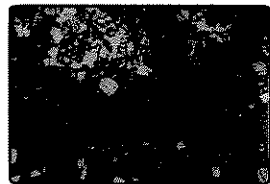
UxN

5,20 NOV72PB
67975,14 3.4



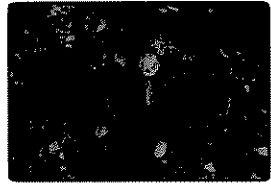
Hornfels clasts in white
mx

5,20 NOV72PB
67975,14 3.4



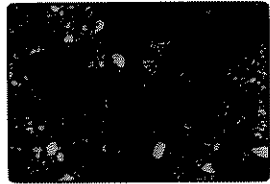
UxN

7,20 NOV72PB
67975,14 3.4



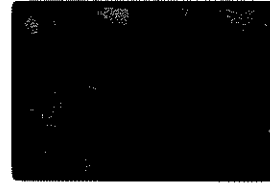
Hornfels family divided
brownish glass? clasts

8,20 NOV72PB
67975,14 3.4



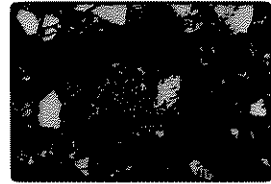
UxN

9,20 NOV72PB
67975,14 3.4



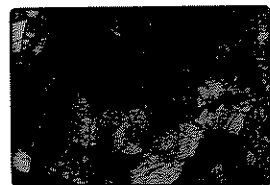
Hornfels clast in D1 clast

10,20 NOV72PB
67975,14 3.4



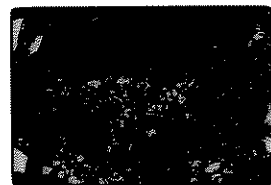
UxN

11,20 NOV72PB
67975,14 3.4



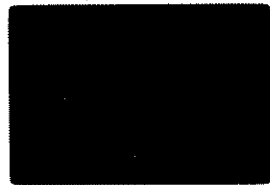
Hornfels clast in D1
clast

12,20 NOV72PB
67975,14 3.4



UxN

13,20 NOV72PB
67975,14 3.4



Same as #3

14,20 NOV72PB
67975,14 3.4



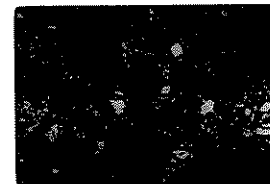
UxN

15,20 NOV72PB
67975,14 3.4



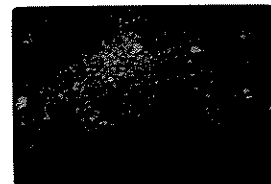
Cataclastic troctolite

3,20 NOV72PB
67975,14 3.4



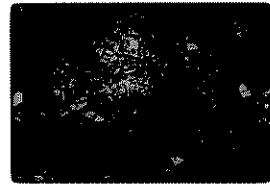
UxN

7,20 NOV72PB
67975,14 3.2



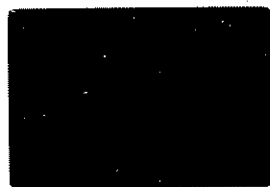
Gen view, includes gabbro

8,20 NOV72PB
67975,14 3.2



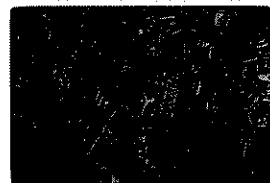
UxN

9, 20 NOV 72PB
68416, 6
~~68416, 6~~ 8.2



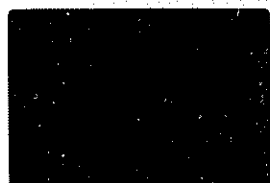
Gen. view ~~in back~~
~~back~~ Porphyritic

10, 20 NOV 72PB
68416, 6 8.2



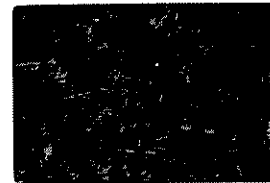
UXN

21, 20 NOV 72PB
68416, 6 6.6



Another view

12, 20 NOV 72PB
68416, 6 6.6



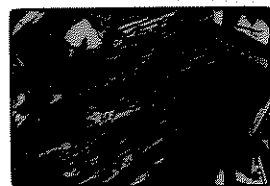
UXN

13, 20 NOV 72PB
68416, 6 0.9



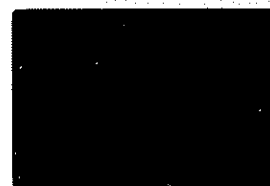
Oddly relict pc kemp
in opht. v.k

14, 20 NOV 72PB
68416, 6 0.9



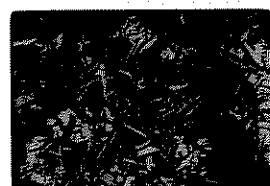
UXN

15, 20 NOV 72PB
68416, 6 2.2



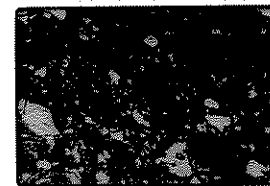
Same as 23, further

16, 20 NOV 72PB
68416, 6 2.2



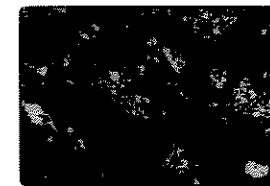
UXN

17, 20 NOV 72PB
60019, 13 2.2



DI dust? w/ 5 frags shattered
vk vrel in mat. 5% pc
relict

18, 20 NOV 72PB
60019, 13 2.2



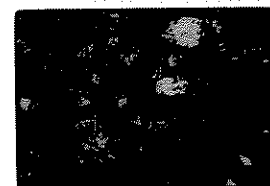
UXN

19, 20 NOV 72PB
60275, 13 3.4



Contact "cobble"-fractured
but not blue, matrix
largely broken down

20, 20 NOV 72PB
60275, 13 3.4



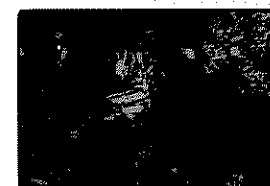
UXN

31, 20 NOV 72PB
60315, 14 0.7



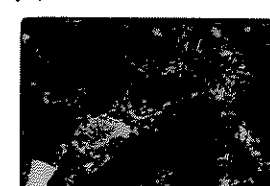
Circular droplet w/ intergran
texture in por. k. v.k

12, 20 NOV 72PB
60315, 14 0.7



UXN

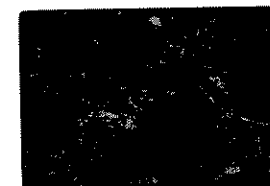
13, 20 NOV 72PB
63335, 13 3.4



Fractured finely fractured
vk in vrel? by melted
vk w/ vrel intergran text.

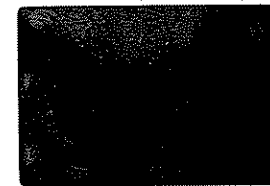
63335
13
13

2, 20 NOV 72PB
63335, 13 3.4



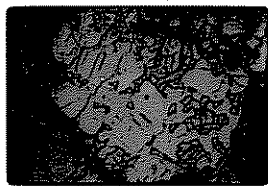
UXN

3, 20 NOV 72PB
64471, 13 0.7



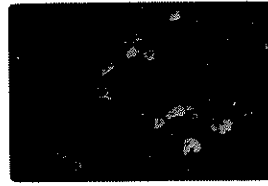
Oliv partly & compl.
repl'd by spongy bp&S

1,21 DEC 72P8
67415,13 20x



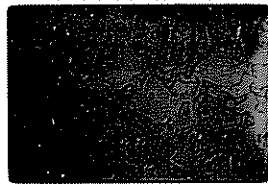
Exst. in interstit. opx in
granobl. polyg. hornfels
clast. Rud. cl. in opx

2,21 DEC 72P8
67415,13 20x



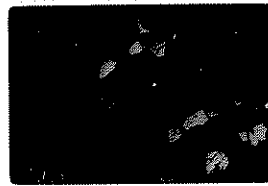
UXN

3,21 DEC 72P8
67415,13 25x



Same as 1

4,21 DEC 72P8
67415,13 25x



UXN

5,21 DEC 72P8
61135,8 25x



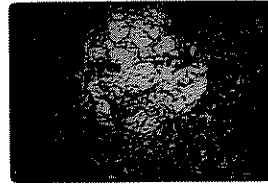
Intersert. clast w/ pc
helictis

6,21 DEC 72P8
61135,8 25x



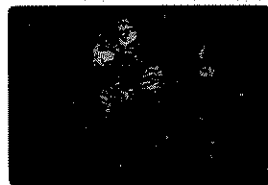
UXN

7,21 DEC 72P8
67937,16 10x



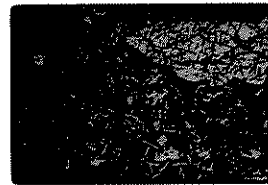
Granobl.-polyg. clast in
ophit. mx

8,21 DEC 72P8
67937,16 10x



UXN

9,21 DEC 72P8
67937,16 20x



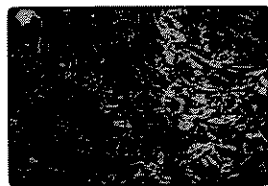
Peridict & textural hetero-
geneity in ophit. mx

10,21 DEC 72P8
67937,16 20x



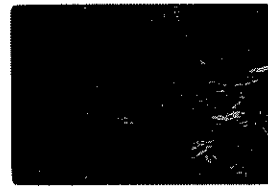
UXN

11,21 DEC 72P8
~~67937,16~~ 66055,62 25x



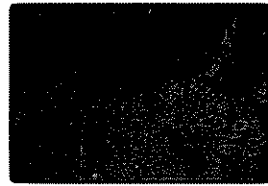
Textural var. in ophit. clast
sh. w/ grad. cut betw
one & fine intersert. r.k

12,21 DEC 72P8
66055,62 25x



UXN

13,21 DEC 72P8
~~66055,62~~ 66055,62 4x?



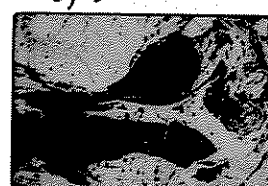
~~Close-up of 11~~
Close-up of 4

14,21 DEC 72P8
66055,62



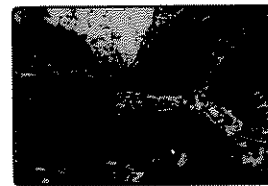
UXN

15,21 DEC 72P8
60115,8 10x



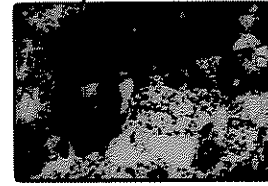
Ang. & partly remelted blk
melt in part, melted, also
bordered white

16,21 DEC 72P8
60115,8 10x



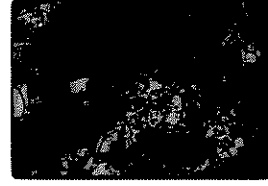
UXN

17,21 DEC 72P8
66055,62 10x



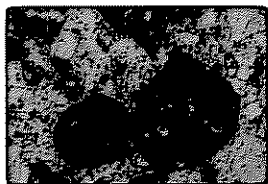
Partial breakup of D1 to
mcl. frags - glass delings
in broken granobl.-polyg. mx

18,21 DEC 72P8
66055,62 10x



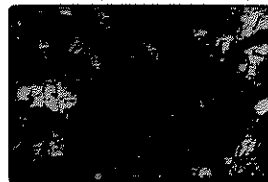
UXN

19, 21 DEC 72PB
66055, 62 20X



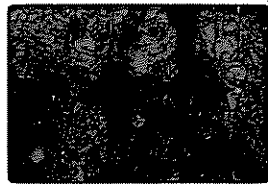
Rund frags - one is release
on rnd metaclastic zone

20, 21 DEC 72PB
66055, 62 20X



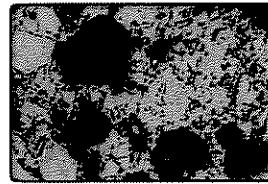
LXN

21, 21 DEC 72PB
66055, 62 50X



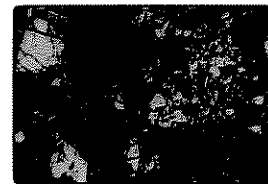
Frag. of glass w/ vein; rnd
lithic core to rnd progression
1 crack & it comes off

22, 21 DEC 72PB
66055, 62 70X



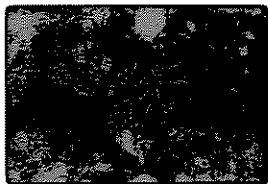
And DI's & rnd relict granula
Polyg frag in mix

23, 21 DEC 72PB
66055, 62 10X



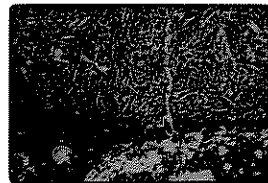
LXN

24, 21 DEC 72PB
61155, 7 50X



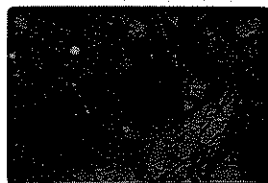
Spherical intergran. "bad" in
fine brownfels, Grad, cut

25, 21 DEC 72PB
61155, 7 20X



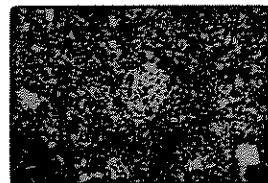
Fine brownfels w/ flow banding
incl. encl. intergran. clast

26, 21 DEC 72PB
66035, 10 50X



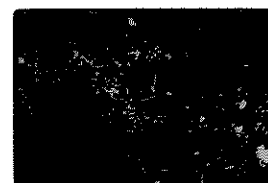
Sphere w/ interstitial text,
& relict, min. frag core

27, 21 DEC 72PB
6662235, 68 20X



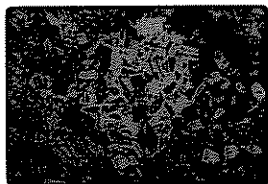
Rundish intergran. particles,
pe-rith, in porphyrobl. mix

28, 21 DEC 72PB
62235, 68 20X



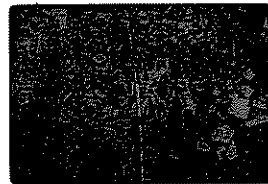
LXN

29, 21 DEC 72PB
62235, 68 50X



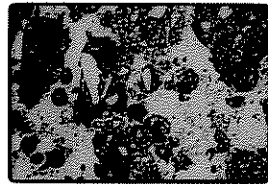
Same as 27 closer

30, 21 DEC 72PB
62235, 68 50X



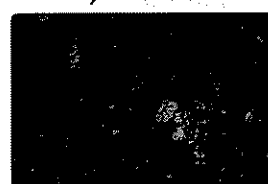
Another, compl. encased in
porphyroblasts - at cut 5/3

31, 21 DEC 72PB
66055, 74 10X



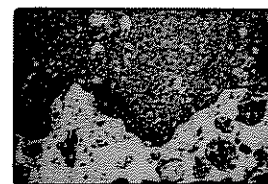
Belts of metaclastic, brown
glass of vein. NOTE glass belt
attached to metaclastic

32, 21 DEC 72PB
66055, 74 10X



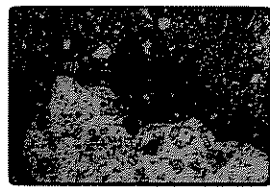
LXN

33, 21 DEC 72PB
66055, 74 10X



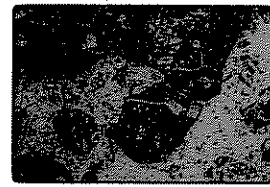
Glass release along large,
irreg metaclastic

1, 22 DEC 72PB
66055,74 25x



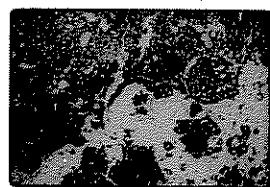
Rnd frag metaclastic isol.
on glass selvage on base,
very metaclastic

2, 22 DEC 72PB
66055,74 25x



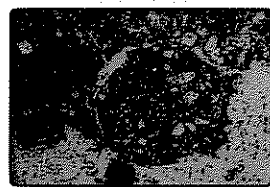
Sliver of frag spalling
from glass selvage

3, 22 DEC 72PB
66055,74 10x



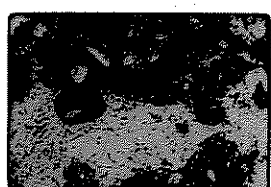
Spalling of rnd pieces
of selvage

4, 22 DEC 72PB
66055,74 25x



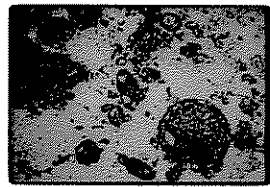
Close-up of large spalling
frag of 3

5, 22 DEC 72PB
66055,74 25x



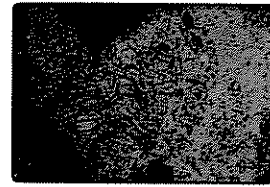
Close-up of 2 incomplete,
detached pieces of selvage

6, 22 DEC 72PB
66055,74 10x



Rnd. frags, w/ or w/o
cores, of selvage

7, 22 DEC 72PB
66055,74 20x



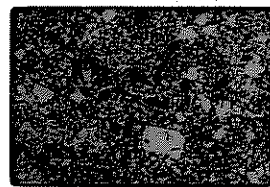
Pod of granobl-polyg
hornfels in crushed
antorthosite

8, 22 DEC 72PB
66055,74 20x



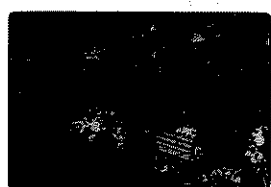
UXN

9, 22 DEC 72PB
62235,39 25x



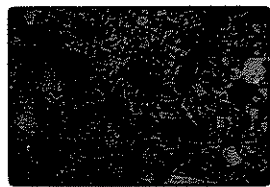
Intersect. pat. in psilob.
mx - his pp

10, 22 DEC 72PB
62235,39 25x



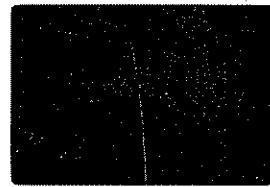
UXN

11, 22 DEC 72PB
62235,39 50x



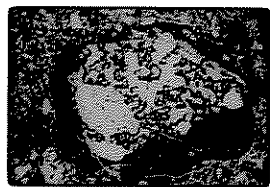
Close up of 9,5 opx selv-
opht. incl. pt

12, 22 DEC 72PB
62235,39 50x



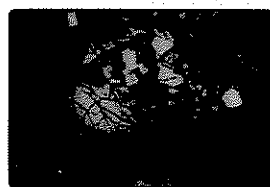
Close up intergran-psilobol
cont. Note in cl. of opx patk.
by Pt 14115

13, 22 DEC 72PB
67015,76 10x



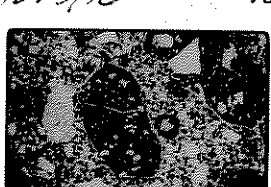
Granobl-polyg. hornfelsed
in D1 (=selvage?) - single opx
in hornfels breaking down

14, 22 DEC 72PB
67015,76 10x



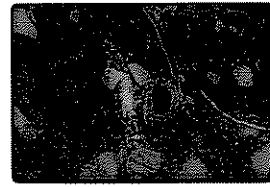
UXN

15, 22 DEC 72PB
67015,76 10x



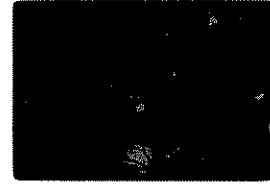
Grey glass showing clast in
rnd. det. mat like selvage. &
other selvage frag? w/ no selv

16, 22 DEC 72PB
67015,76 50x



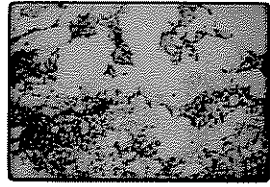
Op. 20. Keldsp. sec. rim.
Spinel not abt to opx. Rim
has granobl. texture

17, 22 DEC 72PB
67015,76 50x



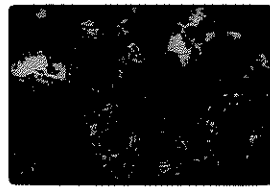
UXN

18, 22 DEC 72PB
62237,9



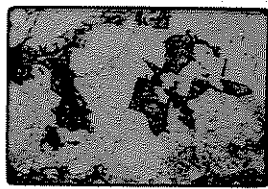
Presence of young text. in
write

19, 22 DEC 72PB
62237,9



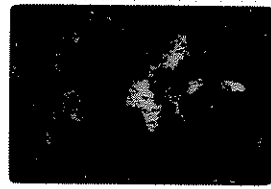
UXN

20, 22 DEC 72PB
62237, 9



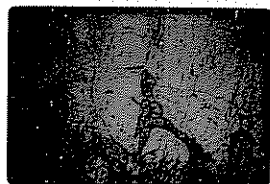
Quartzes 1/8 clover

21, 22 DEC 72PB
62237, 9



UXN

22, 22 DEC 72PB
62236, 6 10x



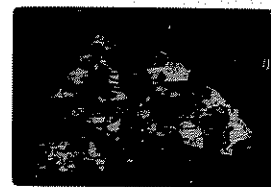
10x mold on 3 pcs

23, 22 DEC 72PB
62236, 6 10x



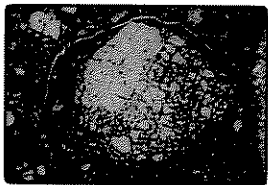
UXN

24, 22 DEC 72PB
67035, 14 10x



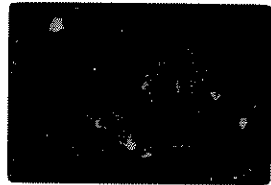
UXN. Foliated clast, all pc

25, 22 DEC 72PB
67035, 14 10x



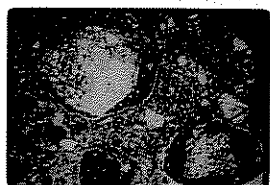
Crushed pc clast w/ flow-banded selvage

26, 22 DEC 72PB
67035, 14



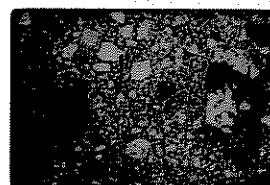
UXN

27, 22 DEC 72PB
67035, 14



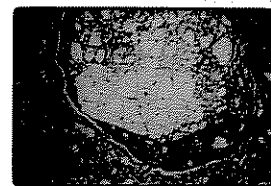
2 round clasts of basal piece of selvage

28, 22 DEC 72PB
67035, 14 17x



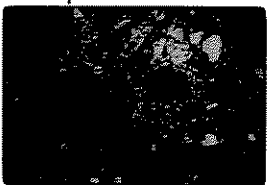
2 tract. ? clasts, oliv → spongy opqs, pc med 1/2

29, 22 DEC 72PB
67035, 14 10x



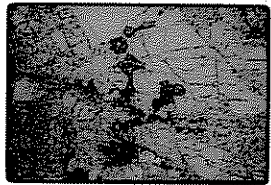
Flow banding in selvage of crushed pc clast

30, 22 DEC 72PB
67035, 14 10x



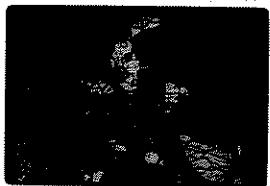
UXN

31, 22 DEC 72PB
67975, 13 17x



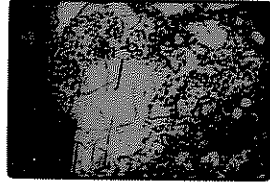
Relict gabbro? - truncated opx mold on pc

32, 22 DEC 72PB
67975, 13 17x



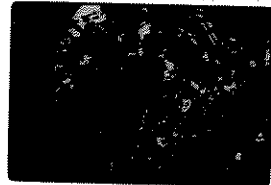
UXN

33, 22 DEC 72PB
67975, 13 17x



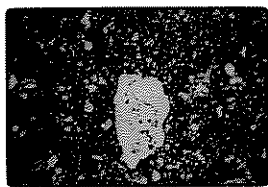
Herzfelds relict core pc

34, 22 DEC 72PB
67975, 13 17x



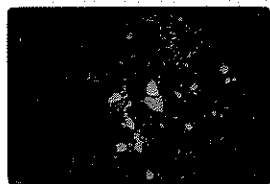
UXN

1, 23 DEC 72PB
65015, 86 10x



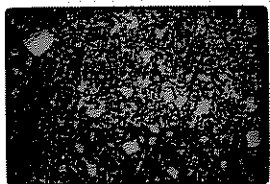
Granoblit-polyh. clast in
peritectic mat. w/ spinels & peric
perites, round Oliv in both

2, 23 DEC 72PB
65015, 86 10x



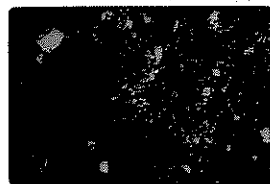
ULXN

3, 23 DEC 72PB
65015, 76 17x



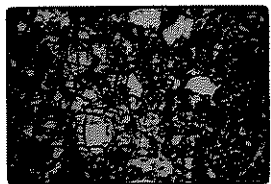
Large clast spinels to
peritectic texture

4, 23 DEC 72PB
65015, 76 17x



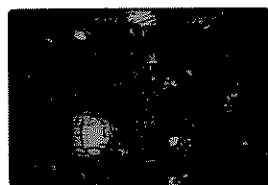
ULXN

5, 23 DEC 72PB
65015, 76 20x



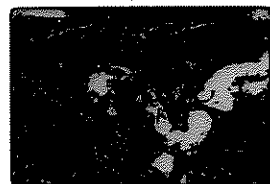
Large cluster of broken Oliv,
pc, spinel with peritectic
spinel to peritectic mat

6, 23 DEC 72PB
65015, 76 20x



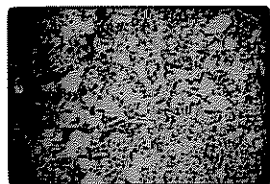
ULXN

7, 23 DEC 72PB
65035, 6 25x



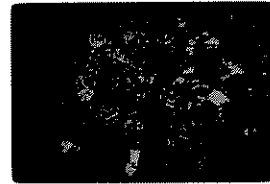
Intermetallic D1 & scrappy
white pc debris

8, 23 DEC 72PB
65075, 10 10x



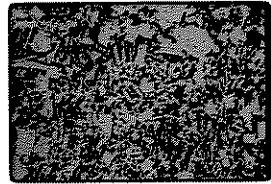
Crushed Hk (metachertic?)
spinel? to cross ophit. spinel
to finer Oliv-banded intergran

9, 23 DEC 72PB
65075, 10 10x



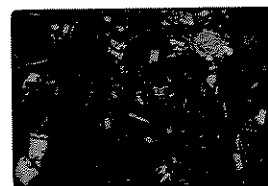
ULXN

10, 23 DEC 72PB
65075, 10 20x



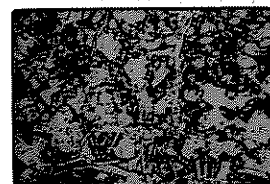
Close of ophit-intergran

11, 23 DEC 72PB
65075, 10 20x



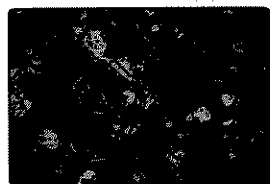
ULXN

12, 23 DEC 72PB
65075, 10 20x



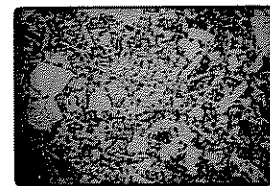
Close of ophit-hornfels contact

13, 23 DEC 72PB
65075, 10 20x



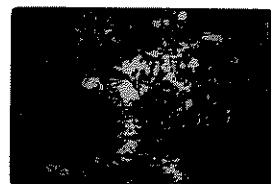
ULXN

14, 23 DEC 72PB
65075, 10 10x



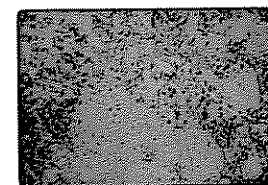
Irreg pcs in ophit zone

15, 23 DEC 72PB
65075, 10 10x



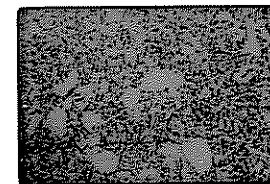
ULXN

16, 23 DEC 72PB
65075, 10 10x



Fine spinel pc-rich zone
in ophit.

17, 23 DEC 72PB
6506, 14 17x



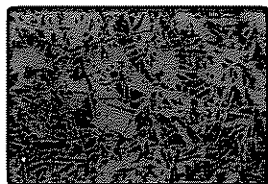
Intergran. text. w/ pc
debris

18, 23 DEC 72PB
6506, 14 17x



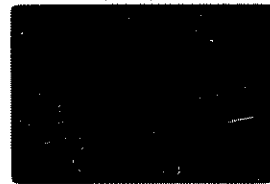
ULXN

19, 23 DEC 72P8
63506,14 40X



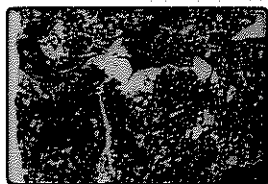
Intergran. + small pasty
fragments peritectics

20, 23 DEC 72P8
63506,14 40X



UKN

21, 23 DEC 72P8
67956,14



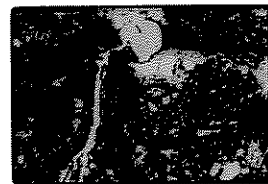
Glass with veins + clasts
with clasts

22, 23 DEC 72P8
67956,14



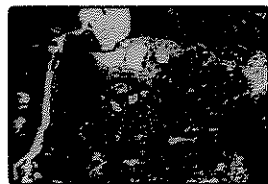
Another view

23, 23 DEC 72P8
67956,14



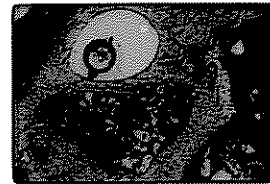
Closeup

24, 23 DEC 72P8
67956,14



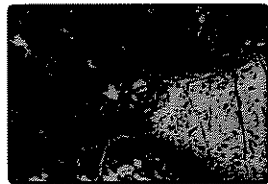
Closeup

25, 23 DEC 72P8
67956,14



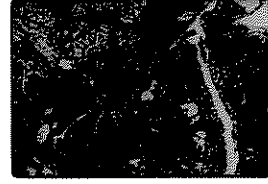
Note darker glass at edges
(division of clasts?) + clasts
winding of this

26, 23 DEC 72P8
67956,14 20X



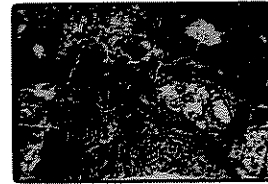
Well rounded metaclastic
clasts where glass veins
split

27, 23 DEC 72P8
67956,14 10X



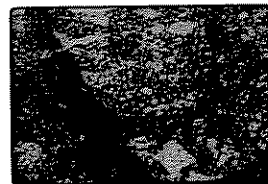
Many well rounded clasts where
glass veins split

28, 23 DEC 72P8
67956,14 33X



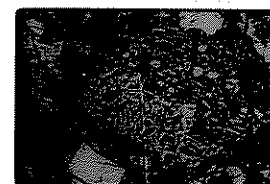
Rounded hornfels clasts in
glass veins

29, 23 DEC 72P8
60019,14 25X



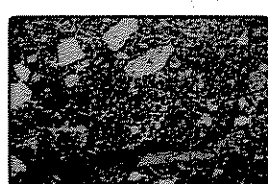
Subtle splitting off of rock
particles by broken glass

30, 23 DEC 72P8
60019,14 25X



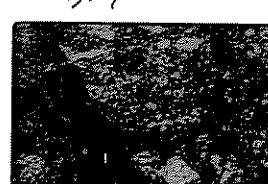
2 intergranular in int, fine
one banded, in clast w/
partial glass selvage

31, 23 DEC 72P8
60019,14 10X



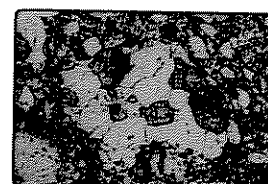
Glass selvage on metaclastic
clast - one in # 30

32, 23 DEC 72P8
60019,14 25X



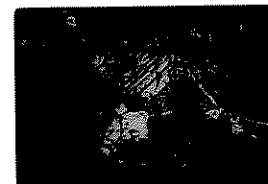
Repeat # 30

33, 23 DEC 72P8
60019,14 10X



Cracked? clast - cracked
but orig texture intact

34, 23 DEC 72P8
60019,14 10X



UKN

1, 24 DEC 1985
67435,14 8.2



Spiral tract, cumulate -
oliv., spiral peak and base

2, 24 DEC 1985
67435,14 8.2



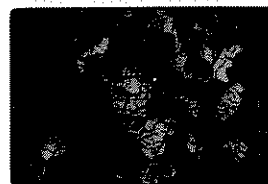
UXN

3, 24 DEC 1985
67435,14 6.6



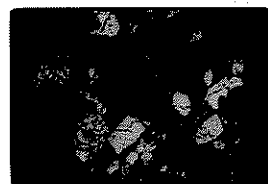
Same, closer

4, 24 DEC 1985
67435,14 6.6



UXN

5, 24 DEC 1985
67435,14 6.6



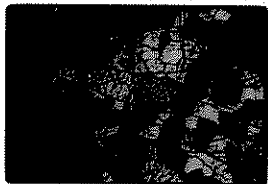
Poik. pr in extra.

6, 24 DEC 1985
67435,14 5.3



Closey

7, 24 DEC 1985
67435,14 5.3



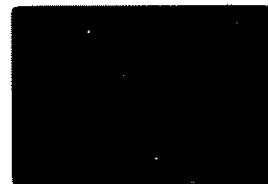
UXN

8, 24 DEC 1985
67435,14 3.4



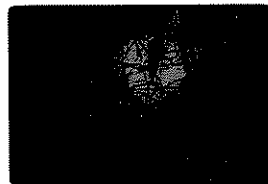
Closey

10, 24 DEC 1985
67435,14 3.4



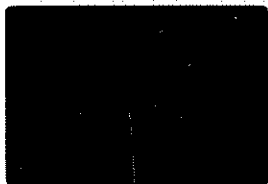
Another view

11, 24 DEC 1985
67435,14 3.4



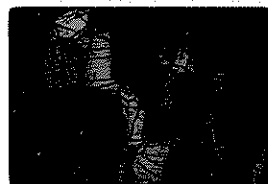
UXN

12, 24 DEC 1985
67435,14 2.2



Closey, spiral-rich
zone

13, 24 DEC 1985
67435, 2.2



UXN

14, 24 DEC 1985
62275,4 8.2



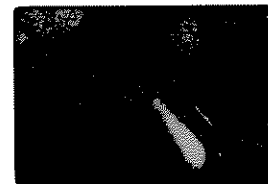
Extensive fusion of cata-
clastic material. Matrix is
cluster patches, granular relict.

15, 24 DEC 1985
62275,4 8.2



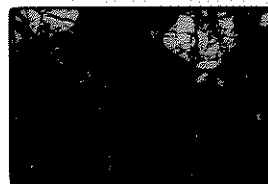
UXN

16, 24 DEC 1985
62275,4 3.4



Closey

17, 24 DEC 1985
62275,4 3.4



UXN