

1,25 JAN 73P2  
61016,207 8.2



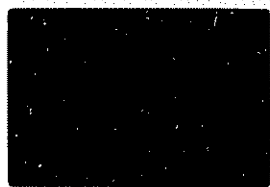
Muscledgn. frags in fg inter-  
stitial bas - pe lthn →  
Muscledgn. two mafics intact

2,25 JAN 73P2  
61016,207 8.2



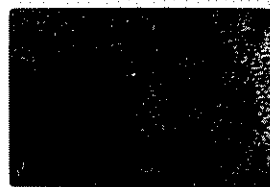
LLXN

3,25 JAN 73P2  
61016,207 8.2



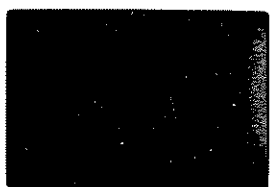
Another view

4,25 JAN 73P2  
61016,207 8.2



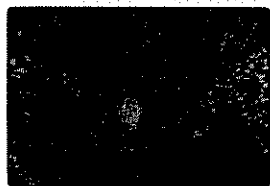
LLXN

5,25 JAN 73P2  
61016,207 5.3



Close. Zoned ex perthite -  
chrt. at interst. pe in  
muscledgnite

6,25 JAN 73P2  
61016,207 5.3



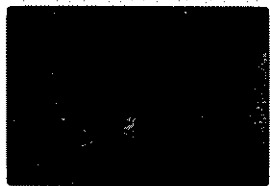
LLXN

7,25 JAN 73P2  
61016,210 8.2



Exam. Note round muscledgn.  
frags.

8,25 JAN 73P2  
61016,210 8.2



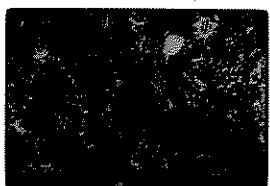
LLXN

9,25 JAN 73P2  
61016,224 8.2



Row of pe pellets + much  
spherulitic pe at microbx  
one end

10,25 JAN 73P2  
61016,224 8.2



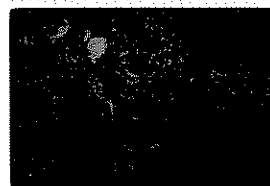
LLXN

11,25 JAN 73P2  
61016,224 8.2



Mix - banding truncatd.  
& pieces of mix in spherul.

12,25 JAN 73P2  
61016,224 8.2



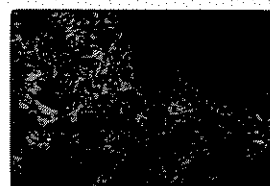
LLXN

13,25 JAN 73P2  
61016,224 5.3



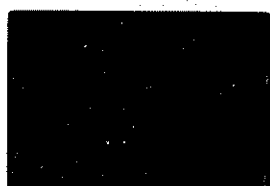
Close. Note flow struc in  
plane of spherulitic  
parts

14,25 JAN 73P2  
61016,224 5.3



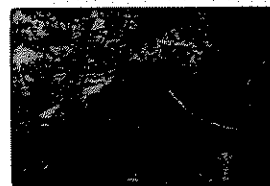
LLXN

15,25 JAN 73P2  
61016,224 5.3



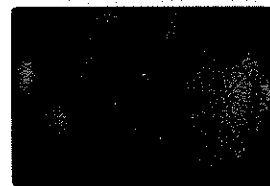
Another view - strong sect  
matrix

16,25 JAN 73P2  
61016,224 5.3



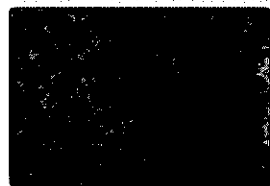
LLXN

17,25 JAN 73P2  
61016,210 3.4



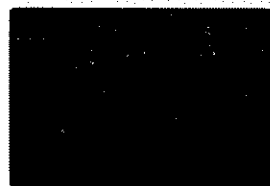
Muscledgn. clast + mix

18,25 JAN 73P2  
61016,210 3.4



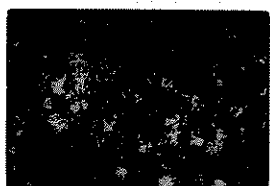
LLXN

19,25 JAN 73P2  
61016,210 3.4



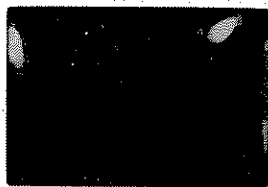
Rk frag - cell of coarse texture  
partly melted; looks appropri.  
to mix comp.

20,25 JAN 73P2  
61016,210 3.4



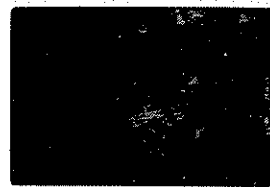
LLXN

21,25 JAN 1992  
61016,210 3.4



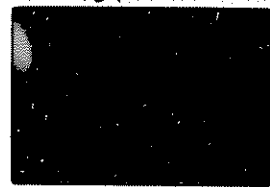
Same as 19; rotated 90°  
Note glass selvage

22,25 JAN 1992  
61016,210 3.4



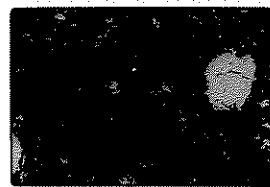
ULXN

23,25 JAN 1992  
61016,207  
207 3.4



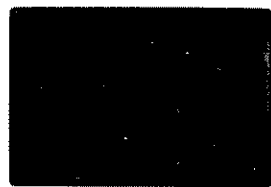
muskeginite (tail of relic  
pc), relic px

24,25 JAN 1992  
61016,207 3.4



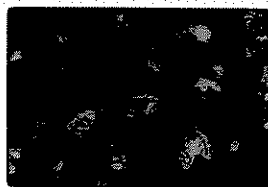
ULXN

25,25 JAN 1992  
61016,207 0.9



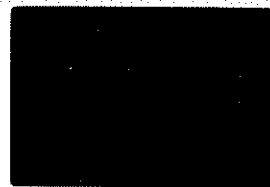
Mix texture. Relict →  
muskeginite.

26,25 JAN 1992  
61016,207 0.9



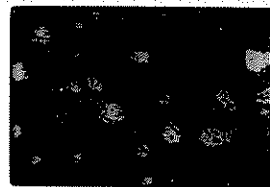
ULXN

27,25 JAN 1992  
61016,207 0.9



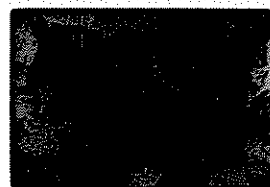
Matrix. Pc → mask.

28,25 JAN 1992  
61016,207 0.9



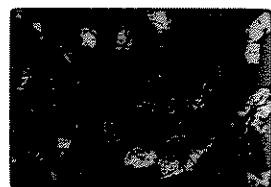
ULXN

29,25 JAN 1992  
61016,210 0.9



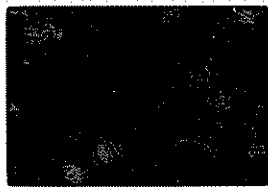
Mix. Relict texture  
around undigested  
mat.

30,25 JAN 1992  
61016,210 0.9



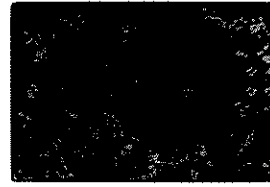
ULXN

31,25 JAN 1992  
61016,210 2.2



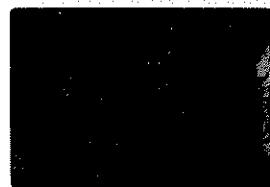
Contact frag, pc → mask.  
Matrix relict to sugary  
agg.

32,25 JAN 1992  
61016,210 2.2



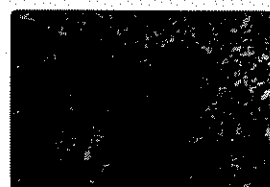
ULXN

33,25 JAN 1992  
61016,210 3.4



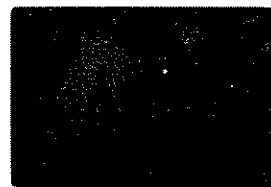
Another contact frag → mask  
note moulded px

34,25 JAN 1992  
61016,210 3.4



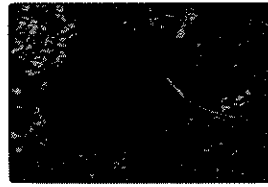
ULXN

35,25 JAN 1992  
61016,210 3.4



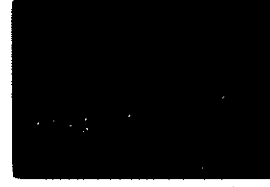
Another contact. chert w/  
large pc relict → mask only.

36,25 JAN 1992  
61016,210 3.4



ULXN

37,25 JAN 1992  
61016,224 3.4



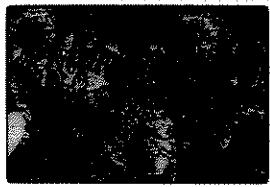
Flow trace in spherical  
litic zone

1,26 JAN73P2  
61016,224 3.4



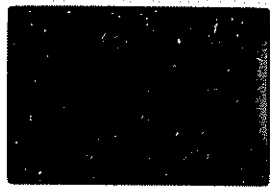
Flow struc. in Spherulitic zone

2,26 JAN73P2  
61016,224 3.4



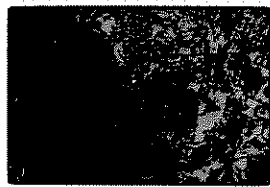
UXN

3,26 JAN73P2  
61016,224 3.4



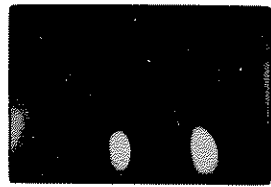
Microbe cut w/ spherulitic zone

4,26 JAN73P2  
61016,224 3.4



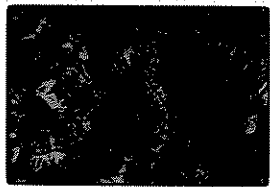
UXN

5,26 JAN73P2  
61016,224 3.4



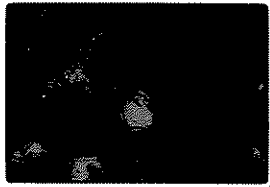
Another view

6,26 JAN73P2  
61016,224 3.4



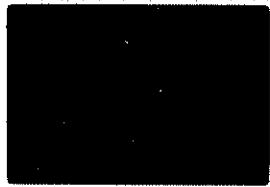
UXN

7,26 JAN73P2  
61016,224 0.9



Spherulitic zone

8,26 JAN73P2  
66095,79 3.4



Rk gray in poik. am w/ pl  
laths, weak flow struc.  
Incl. w/ optitic texture.

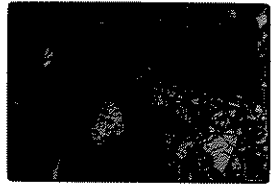
Large injected spherulite  
may be a relic of  
the original matrix

9,26 JAN73P2  
66095,79 3.4



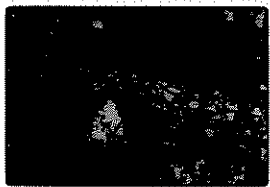
UXN

10,26 JAN73P2  
66095,79 3.4



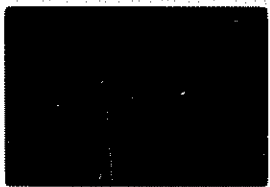
FG poik. met. cut by white  
fragmented mat. Inj. cuts  
coarser main body of rk terr

11,26 JAN73P2  
66095,79 3.4



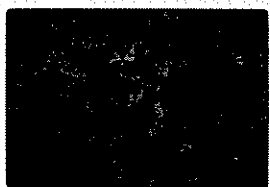
UXN

12,26 JAN73P2  
66095,79 2.2



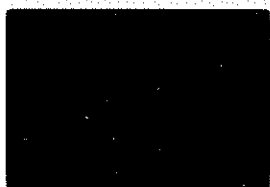
Lower of #13

13,26 JAN73P2  
66095,79 2.2



UXN

14,26 JAN73P2  
66095,79 0.9



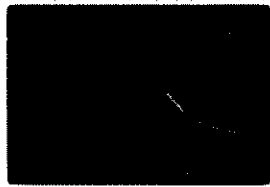
Typ. of texture in main  
body of rk

15,26 JAN73P2  
66095,79 0.9



UXN

16,26 JAN73P2  
66095,79 0.9

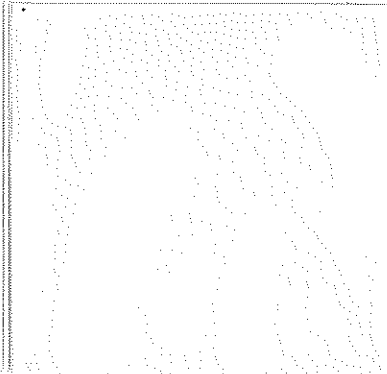
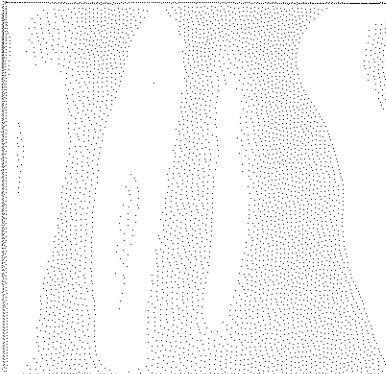
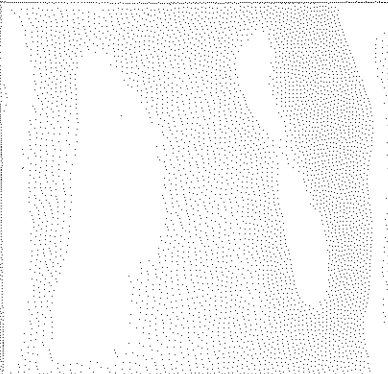


Typ. texture; pebbles

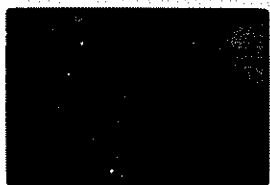
17,26 JAN73P2  
66095,79 0.9



UXN



21, 26  
66095, 79 0.9



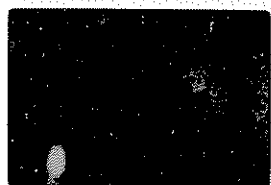
FG polk. frag. 20/2250 approx  
blastic-polyf. in "ophitic"  
mx

22, 26  
66095, 79 0.9



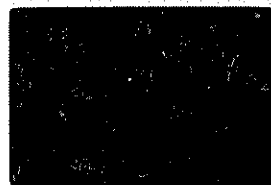
ULX N

23, 26  
62295, 70 8.2



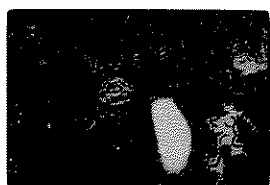
Gen. view - stellate inker  
epheral

24, 26  
62295, 70 8.2



ULX N

25, 26  
62295, 67 8.2



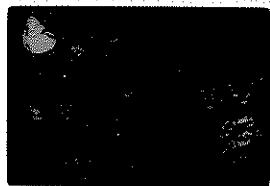
Relict catacl. pc. diagen.  
oliv? Spinel relict

26, 26  
62295, 67 8.2



ULX N

27, 26  
62295, 67 5.3



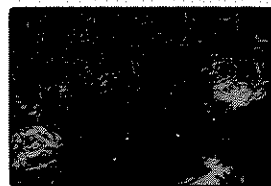
Oliv? relict, small pris-  
matic oliv. in mx

28, 26  
62295, 67 5.3



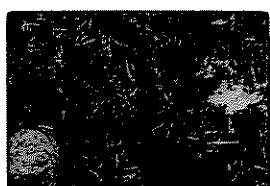
ULX N

29, 26  
62295, 67 5.3



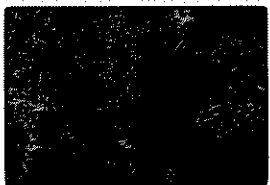
Oliv. + catacl. pc relict

30, 26  
62295, 67 5.3

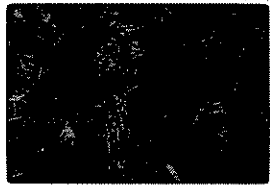


ULX N

31, 26  
62295, 70 5.3



32, 26  
62295, 70 5.3



ULX N

33, 26  
62295, 70 3.4



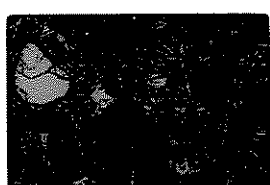
Spinel claxon

34, 26  
62295, 70 3.4



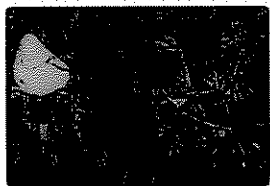
ULX N

35, 26  
62295, 67 3.4



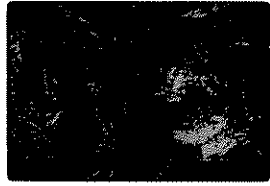
Oliv clast + stellate  
ULX texture

36, 26  
62295, 67 3.4



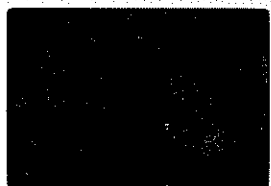
ULX N

37, 26  
62295, 67 3.4



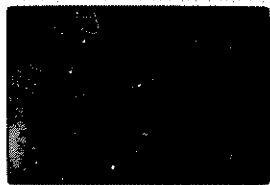
Pc clast, ~~stellate~~  
ULX N

38, 26  
62295, 67 3.4



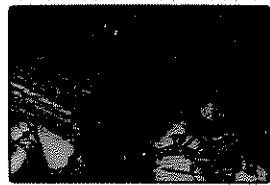
Pc clast, hexlliz

1,27 JAN 73P2  
61156,31 3.4



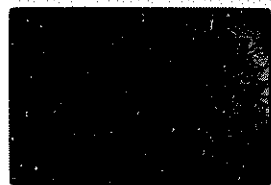
Coarse metaclastic in cut.  
w/ porphyrobl. texture

2,27 JAN 73P2  
61156,31 3.4



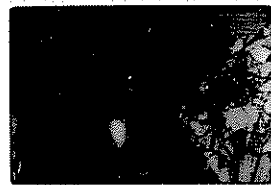
ULXN

3,27 JAN 73P2  
61156,31 3.4



Another view

4,27 JAN 73P2  
61156,31 3.4



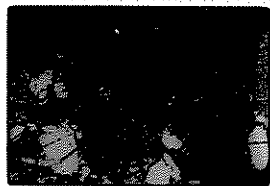
ULXN

5,27 JAN 73P2  
61156,31 2.2



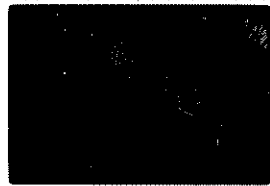
Close

6,27 JAN 73P2  
61156,31 2.2



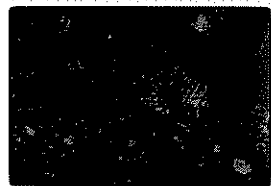
ULXN

7,27 JAN 73P2  
67455,50 3.4



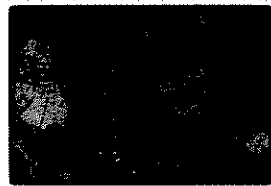
Pc. Contact. clast w/ clear glass  
vein + fringes of vein. Need  
perovskite core in notched  
box - re broken

8,27 JAN 73P2  
67455,50 3.4



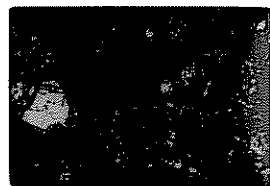
ULXN

9,27 JAN 73P2  
67455,50 8.2



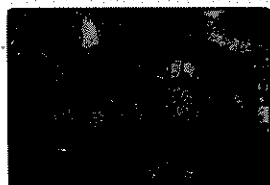
Polymict bx, note spiral w/ rec  
rim in dark clast. Brown frgs  
prob. pieces of vein

10,27 JAN 73P2  
67455,50 8.2



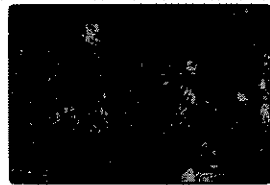
ULXN

11,27 JAN 73P2  
67455,50 8.2



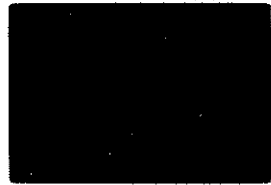
Another view - cataclastic  
clasts

12,27 JAN 73P2  
67455,50 8.2



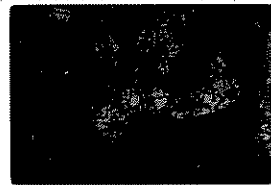
ULXN

13,27 JAN 73P2  
67455,46 3.4



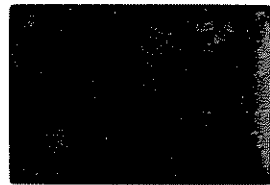
Clasts & finely annealed  
greenish mix?

14,27 JAN 73P2  
67455,46 3.4



ULXN

15,27 JAN 73P2  
67455,46 3.4



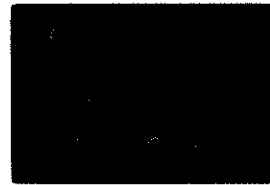
Hornfels & poik. clasts

16,27 JAN 73P2  
67455,46 3.4



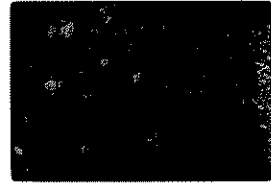
ULXN

17,27 JAN 73P2  
67455,46 8.2



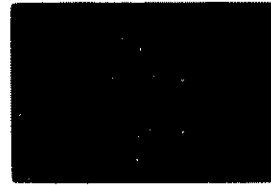
Prob. broken vein clasts  
mix prob. broken fine  
hornfels

18,27 JAN 73P2  
67455,46 8.2



ULXN

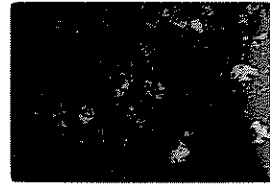
19,27 JAN 73P2  
67455,46 3.4



Close, some v. like 67456  
1) glass veining of hornfels, 2) shatt-  
ering by "shatter cones" - clasts

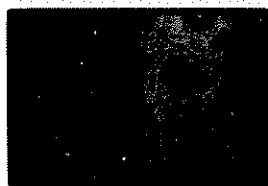
9/20/2000 2.1

20,27 JAN 73P2  
67455,46 3.4

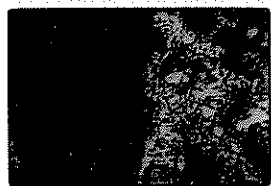


ULXN

21,27 JAN 73P2  
61016,

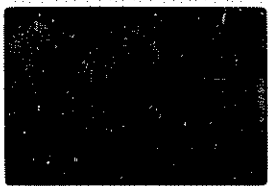


22,27 JAN 73P2  
61016,

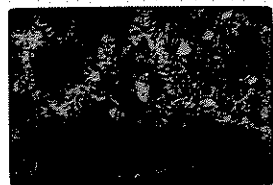


UXN

23,27 JAN 73P2  
61016,

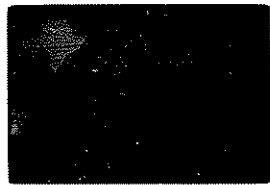


24,27 JAN 73P2  
61016,

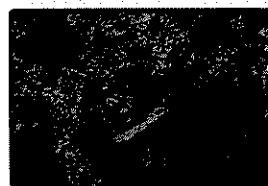


UXN

25,27 JAN 73P2  
61016,

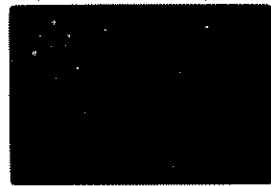


26,27 JAN 73P2  
61016,

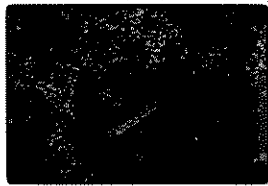


UXN

27,27 JAN 73P2  
61016,



28,27 JAN 73P2  
61016,



UXN

29,27 JAN 73P2  
61016,

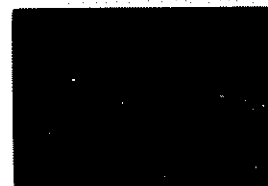


30,27 JAN 73P2  
61016,



UXN

31,27 JAN 73P2  
61016,

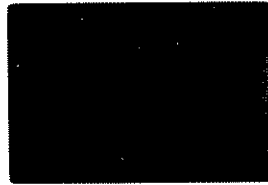


32,27 JAN 73P2  
61016,

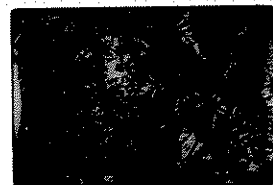


UXN

33,27 JAN 73P2  
61016,

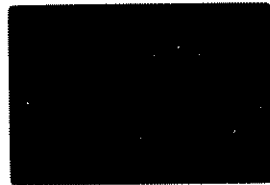


34,27 JAN 73P2  
61016,



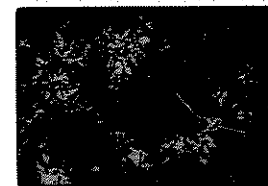
UXN

35,27 JAN 73P2  
61016,



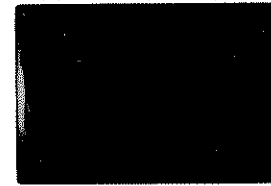
l

36,27 JAN 73P2  
61016,

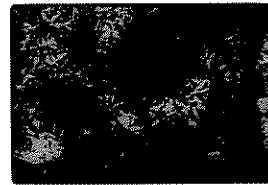


UXN

37,27 JAN 73P2  
61016,



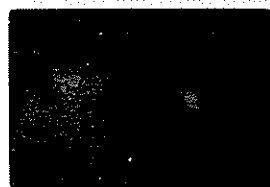
38,27 JAN 73P2  
61016,



UXN

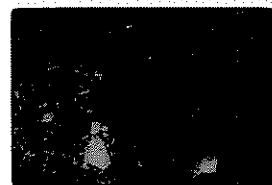


1,28 JAN 73PS  
61156,26 8.2



Gradational? cont. betw. debris  
vs. metablastic? points. obl.  
MX? - some div? points

2,28 JAN 73PS  
61156,26 8.2



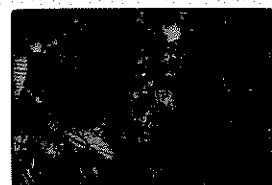
UXIV

3,28 JAN 73PS  
61156,26 6.6



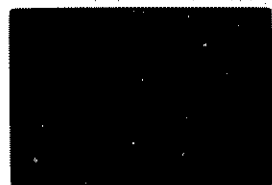
Another view. Dark spots  
of PK are low Bt too. Metel  
sky hi relief

4,28 JAN 73PS  
61156,26 6.6



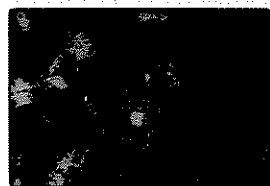
UXIV

5,28 JAN 73PS  
61156,26 3.4



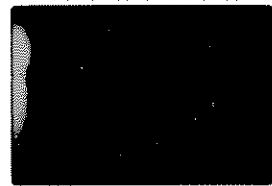
Transition point, suggest  
edge to coarser point in  
interior of metablastic

6,28 JAN 73PS  
61156,26 3.4



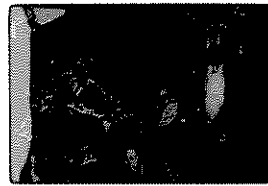
UXIV

7,28 JAN 73PS  
61156,26 0.9



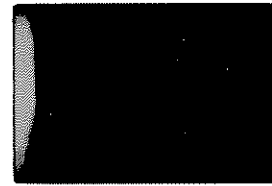
closer of transition

8,28 JAN 73PS  
61156,26 0.9



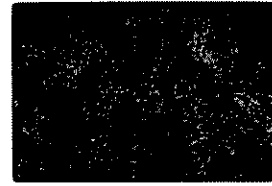
UXIV

9,28 JAN 73PS  
61156,26 0.9



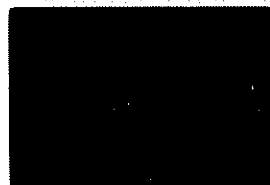
Well inside fine point met-  
~~the fine interst. space~~  
wormy - near late - pl, poss div

10,28 JAN 73PS  
61156,26 0.9



UXIV

11,28 JAN 73PS  
61156,26 0.9



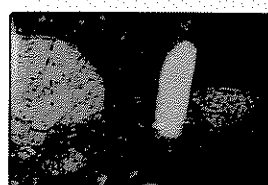
closer of transition in  
size of point from edge  
to center of metablastic

12,28 JAN 73PS  
61156,26 0.9



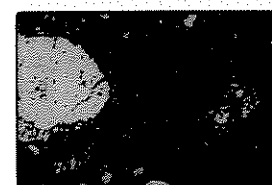
UXIV

13,28 JAN 73PS  
67455,45 3.4



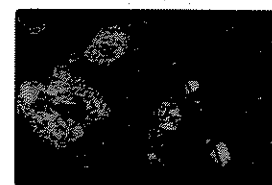
Devit. brown glass fiber in  
or catch vein from finely  
pulverized to hornfels

14,28 JAN 73PS  
67455,45 3.4



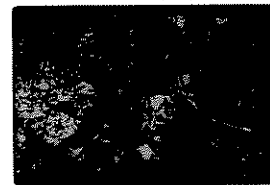
UXIV

15,28 JAN 73PS  
67455,45 2.2



Broken, glass-veined clast  
in brownish glassy matrix  
MX

16,28 JAN 73PS  
67455,45 2.2



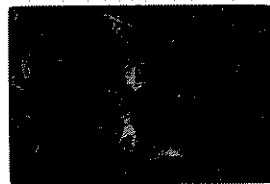
UXIV

1, 29 JAN 73P4  
62295, 74 2.2



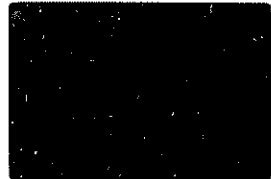
Pc hornfels 21st in quad  
ol-pc, dust, glass - no px?

2, 29 JAN 73P4  
62295, 74 2.2



UXN

3, 29 JAN 73P4  
61016, 226 3.4



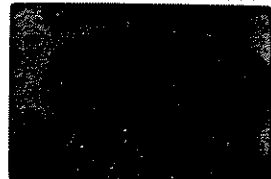
large relict pc cut by  
mylonitized, relict pc

4, 29 JAN 73P4  
61016, 226 3.4



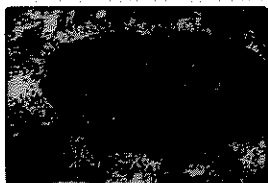
UXN

5, 29 JAN 73P4  
61016, 226 3.4



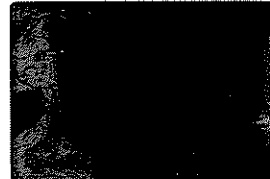
Relict pc cut by mylonitized,  
relict pc

6, 29 JAN 73P4  
61016, 226 3.4



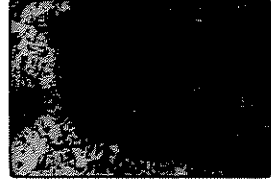
UXN

7, 29 JAN 73P4  
61016, 226 3.4



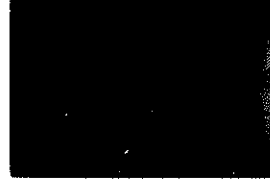
mylonite veneer by  
spherulitic phase

8, 29 JAN 73P4  
61016, 226 3.4



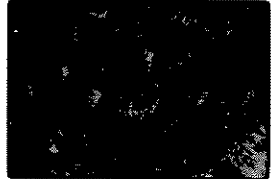
UXN

9, 29 JAN 73P4  
61016, 222 0.9



Strangely relict, matrix (?)  
most large holes in center  
of egg.

10, 29 JAN 73P4  
61016, 222 0.9



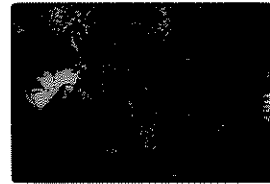
UXN

11, 29 JAN 73P4  
61016, 222 0.9



More old matrix?

12, 29 JAN 73P4  
61016, 222 0.9



UXN

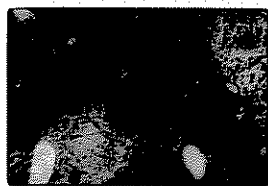


1,30 JAN 83  
60017,119 8.2



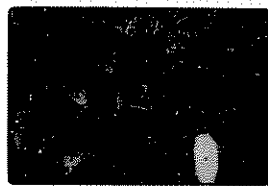
Melt (vesicle) phase, flow-banded cataclastic rhyolite; brown glass

2,30 JAN 83  
60017,119 8.2



U.X.N

3,30 JAN 83  
60017,119 5.3



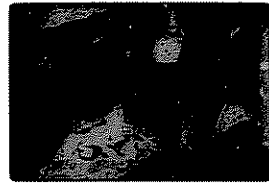
Clusters; more vesicle phase  
Note glass particles melt phase out mark

4,30 JAN 83  
60017,119 5.3



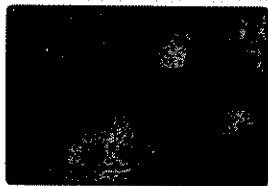
U.X.N

5,30 JAN 83  
60017,118 8.2



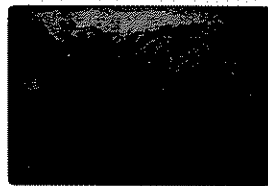
Prominent cavities & melt phase  
Other vesicle phase

6,30 JAN 83  
60017,118 8.2



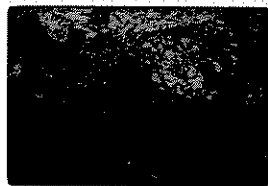
U.X.N

7,30 JAN 83  
60017,122 6.6



Break-up of relict cataclastic to oval particles

8,30 JAN 83  
60017,122 6.6



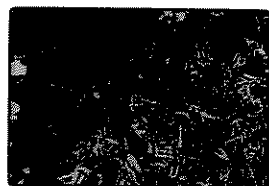
U.X.N

9,30 JAN 83  
60017,122 5.3



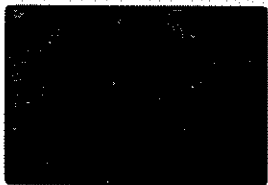
Smooth-walled cavities in vesicle phase in glass matrix

10,9 JAN 83  
60017,122 2.0



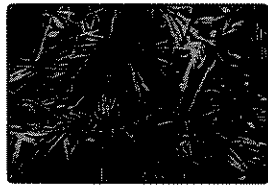
U.X.N

11,30 FEB 83  
60017,111 5.3



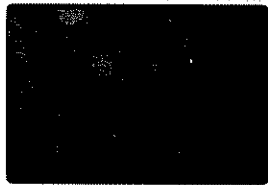
Vesicle phase - spherulitic pe (radial brown glass). Good cell cutter cavities

12,30 FEB 83  
60017,111 5.3



U.X.N

13,30 FEB 83  
60017,111 5.3



Vesicle phase - stellate pe on nucleus & cookie cutter cavities

14,30 JAN 83  
60017,111 5.3



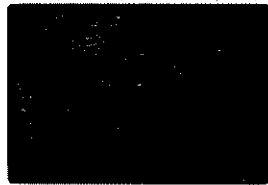
U.X.N

15,30 FEB 83  
60017,111 3.4



U.X.N

17,30 JAN 83  
60017,111 3.4



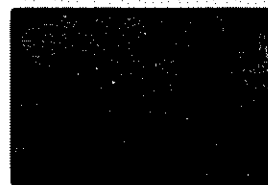
Nuclei for radial pe

18,30 FEB 83  
60017,111 3.4



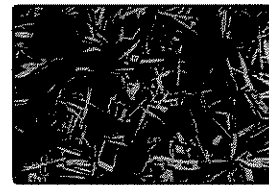
U.X.N

19,30 FEB 83  
60017,111 3.4



Cookie cutter cavities

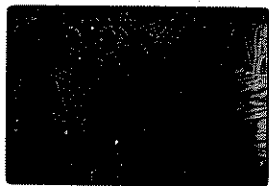
20,30 JAN 83  
60017,111 3.4



U.X.N

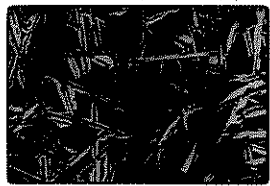
23,30  
60017,112

JAN 83  
3.4



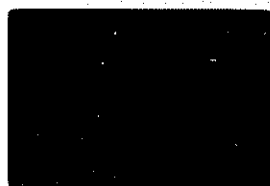
*Pelticodly rexellia, pc*

23,30 JAN 83  
60017,112 3.4



*2xv*

1, 31 MAY 73P9  
6055, 74 3.4



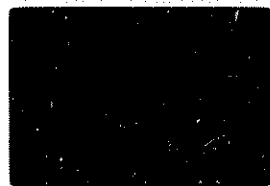
*Cylindrocapsa* sp. pale

2, 31 MAY 73P9  
6055, 74 3.4



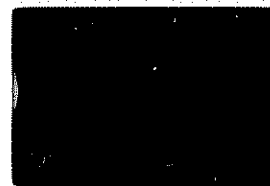
UXN

3, 31 MAY 73P9  
6055, 74 3.4



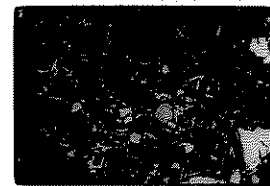
*Cylindrocapsa* sp. pale

4, 31 MAY 73P9  
61175, 100 2.2



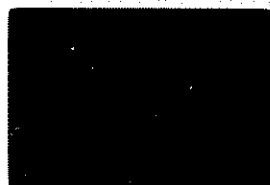
"Spiral basalt", small  
relief pt

5, 31 MAY 73P9  
61175, 100 2.2



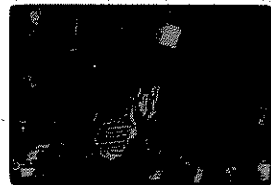
UXN

6, 31 MAY 73P9  
61175, 100 0.9



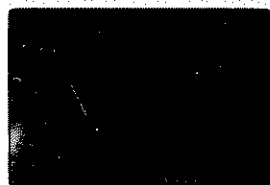
"Spiral basalt", clonal

7, 31 MAY 73P9  
61175, 100 0.9



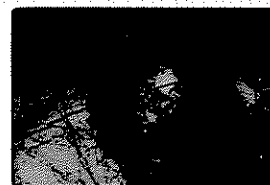
UXN

8, 31 MAY 73P9  
60015, 118 8.8



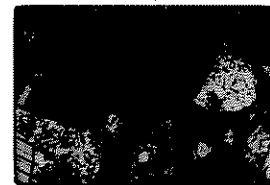
*C. m. robust* pt specimen  
in host glass

9, 31 MAY 73P9  
60015, 118 8.8



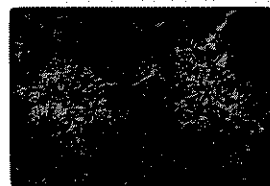
UXN

10, 31 MAY 73P9  
60015, 118 3.4



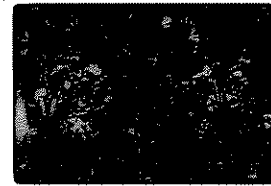
Same as 8 clonal

11, 31 MAY 73P9  
60016, 88 0.9



Circular patches of coarse  
green edge

12, 31 MAY 73P9  
60016, 88 0.9



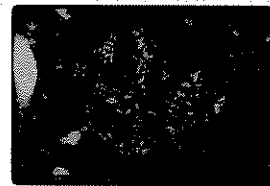
UXN

13, 31 MAY 73P9  
60016, 88 0.9



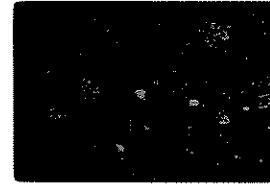
Another patch - more sp  
than 11. From same patch

14, 31 MAY 73P9  
60016, 88 0.9



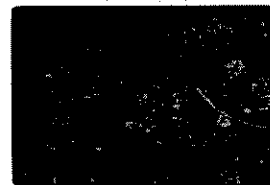
UXN

15, 31 MAY 73P9  
60016, 88 3.4



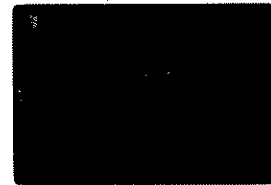
"cellular" fracture note  
difference in mix - 100%  
2/10/11 - some death lines

16, 31 MAY 73P9  
60016, 88 3.4



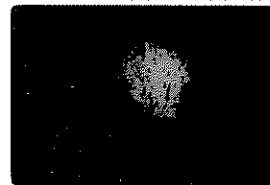
UXN

17, 31 MAY 73P9  
60017, 124 0.9



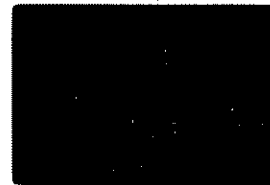
spherulitic pt on host  
pt nucleus

18, 31 MAY 73P9  
60017, 124 0.9



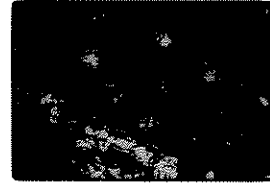
UXN

19, 31 MAY 73P9  
60018, 51 3.4



Thin dark, greenish  
along host edge  
small pt nucleus  
small pt nucleus

20, 31 MAY 73P9  
60018, 51 3.4



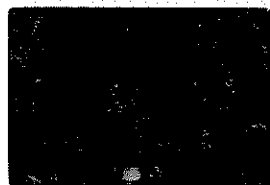
UXN

21, 31 MAY 73P9  
60018, 51 0.9



"up point" yellow + pe reddish  
in dark chest

22, 31 MAY 73P9  
60018, 51 0.9



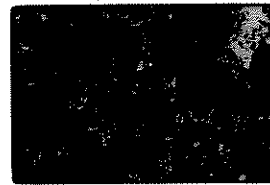
UXIV

23, 31 MAY 73P9  
60018, 51 0.9



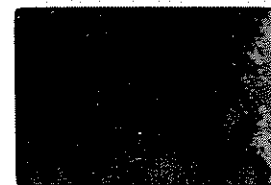
"Suturagenular" text +  
marginal reddish

24, 31 MAY 73P9  
60018, 51 0.9



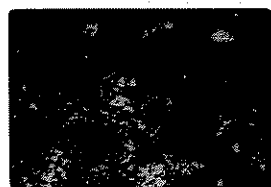
UXIV

25, 31 MAY 73P9  
60018, 51 2.2



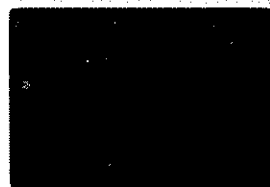
granular base of maxilla 4/5 -  
maxilla with 4/5 of maxilla 4/5 -  
both maxilla

26, 31 MAY 73P9  
60018, 51 2.2



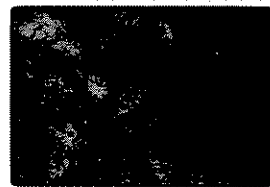
UXIV

27, 31 MAY 73P9  
60018, 51 0.9



Close, showing intermesh  
of pupal frame of 4, 5, 6, 7.  
Malarialistic brown pleurae

28, 31 MAY 73P9  
60018, 51 0.9



UXIV

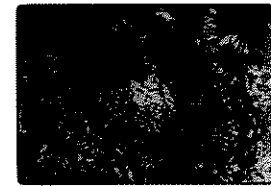
29, 31 MAY 73P9  
60018, 51 2.6



cuticular

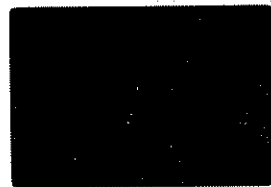
Another part showing pleural  
chord of malarialistic brown  
pleurae by maxilla of 5

30, 31 MAY 73P9  
60018, 51 2.6



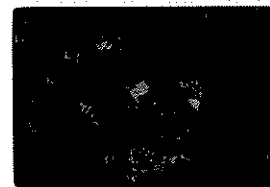
UXIV

31, 31 MAY 73P9  
60015, 118 2.2



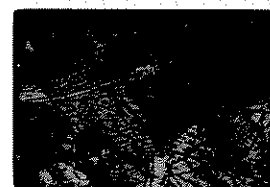
Close of pe. alba in glass case  
new postmaxilla

32, 31 MAY 73P9  
60015, 118 2.2



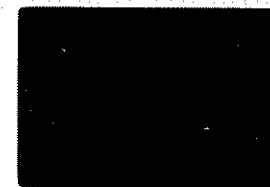
UXIV

33, 31 MAY 73P9  
60015, 136 3.4



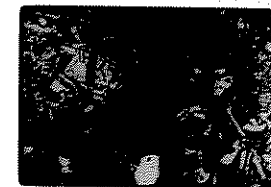
Bent, small pool of tarsus

34, 31 15 MAY 73P9  
60015, 15 0.9



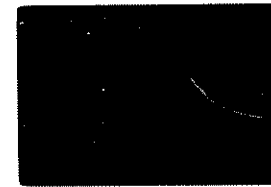
Close with intersegment  
epitaxial texture

35, 31 MAY 73P9  
60015, 15 0.9



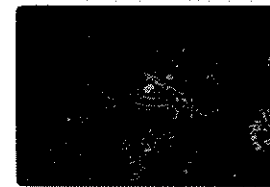
UXIV

36, 31 MAY 73P9  
60015, 60 0.9



Intersegment. ocelli anal  
in epaxial (?) postlobular

37, 31 MAY 73P9  
60015, 60 0.9



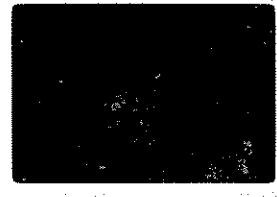
Intersegment. ocelli anal  
in last epaxial (?) postlobular

1, 32 MAY 73PS  
60315, 60 0.9



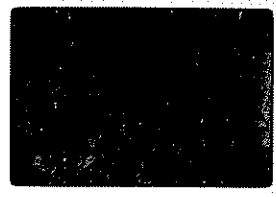
Entomogram, oval in base -  
open pit-like.

2, 32 MAY 73PS  
60315, 60 0.9



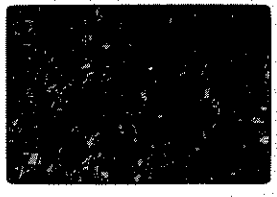
LLXN

3, 32 MAY 73PS  
64435, 5 3.4



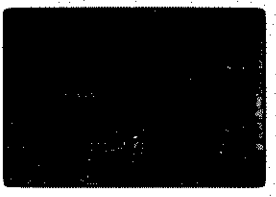
Flow banded, trans. by  
edge of clast - felsic material  
with pinkish-red clast?

4, 32 MAY 73PS  
64435, 5 3.4



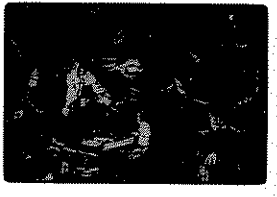
LLXN

5, 32 MAY 73PS  
64455, 37 3.4

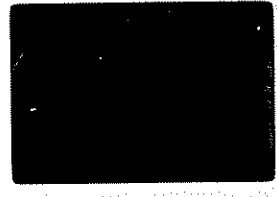


Deformed, partly fused  
ophitic r.t., per. sp.

6, 32 MAY 73PS  
64455, 37 LLXN

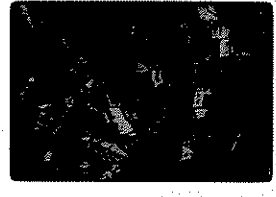


7, 32 MAY 73PS  
64455, 37 3.4



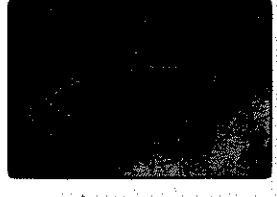
Another view within lens,  
melted zone - melt flow  
edge of r.t.?

8, 32 MAY 73PS  
64455, 37 3.4



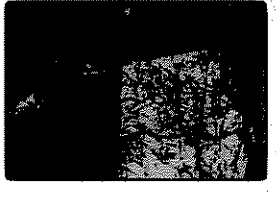
LLXN

9, 32 MAY 73PS  
65056, 14 3.4



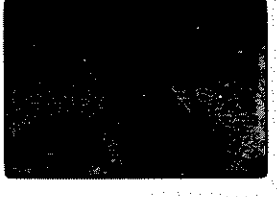
Phosphatic clast, several long  
dark mat. No clear edge  
of amorph. vs. spherulitic

10, 32 MAY 73PS  
65056, 14 3.4



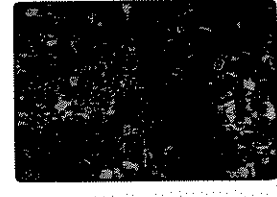
LLXN

11, 32 MAY 73PS  
65056, 14 3.4



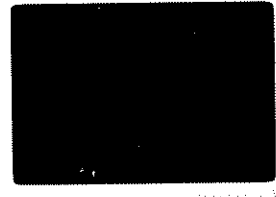
Annealed? catoclastic horizon  
felsic with mostly melted in mat  
of clasts

12, 32 MAY 73PS  
65056, 14 3.4



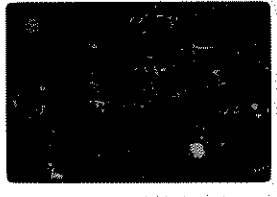
LLXN

13, 32 MAY 73PS  
65095, 13 0.9



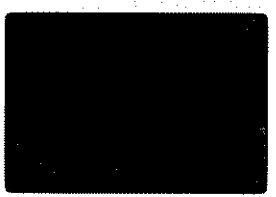
Clast with ocelli of interstitial  
mat. in "ruptured" mode. Much  
of clast

14, 32 MAY 73PS  
65095, 13 0.9



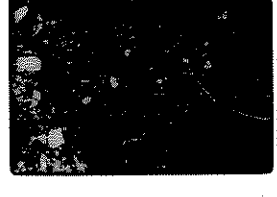
LLXN

15, 32 MAY 73PS  
65095, 13 3.4



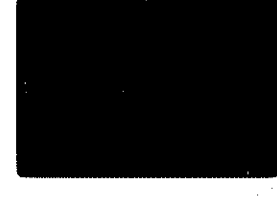
One clast flow banded, but  
open r.t. suggesting ocelli, con-  
trast of red banded r.t. and  
vs. fig. metabasite

16, 32 MAY 73PS  
65095, 13 3.4



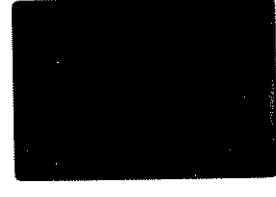
LLXN

17, 32 MAY 73PS  
65095, 13 6.9



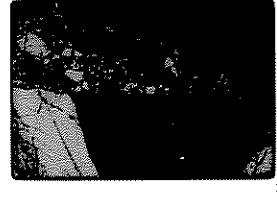
"Interfacial feldsp. "banded"

18, 32 MAY 73PS  
65095, 13 8.8



Another view, clast + others in  
banded "dark" r.t. mat

19, 32 MAY 73PS  
65095, 13 8.8

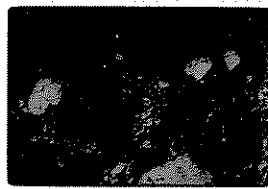


LLXN

20, 32 MAY 73 P3

65095, 54

3.4



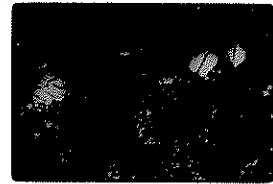
to clast in matrix  
pxs. Breccia glass matrix

gray, v. fine poikiloblastic  
glass, no trace of  
feldspar before fracture

21, 32 MAY 73 P3

65095, 54

3.4

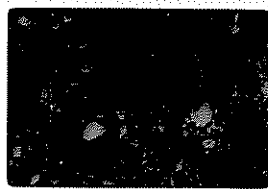


UKN

22, 32 MAY 73 P3

65095, 54

3.4

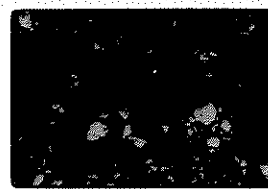


Gen. view. Round vitro-  
phytic, broken glasses,  
matrix clasts

23, 32 MAY 73 P3

65095, 54

3.4

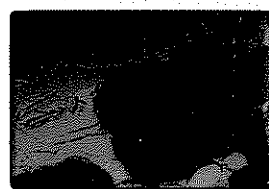


UKN

24, 32 MAY 73 P3

67115, 30

3.4

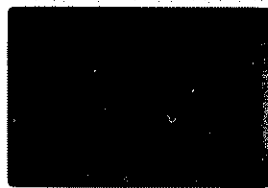


glass + marginal spherulite

25, 32 MAY 73 P3

68815, 15D

3.4



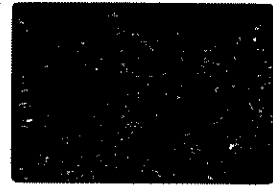
to clast in matrix  
pxs. Breccia glass matrix

clast w/ rapid change from  
gray poikiloblastic to granoblastic  
texture - pxs all epxen

26, 32 MAY 73 P3

68815, 15D

3.4

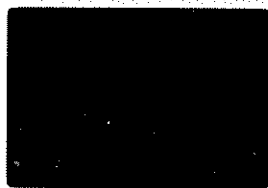


UKN

27, 32 MAY 73 P3

68815, 15D

6.9

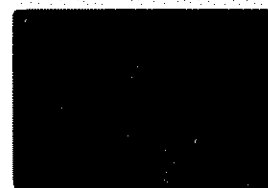


Granite clast showing big  
? rounded px porites, small  
epx granules

28, 32 MAY 73 P3

68815, 15D

3.4

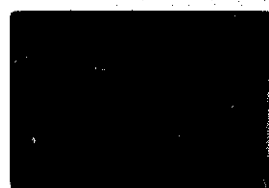


View in poikiloblastic part of  
clast

29, 32 MAY 73 P3

69955, 30

3.8

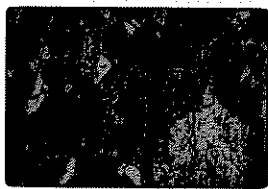


Ca-tact, amorphous

30, 32 MAY 73 P3

69955, 30

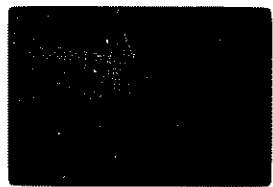
3.8



UKN

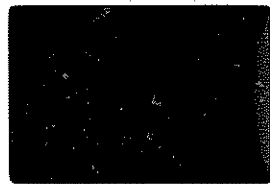


1, 33 FEB 74 P7  
60667,1 3.4



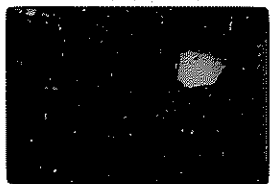
Contact. another, w/ brown  
(partic. mult?) seen in  
interstitial mix

2, 33 FEB 74 P7  
60667,1 3.4



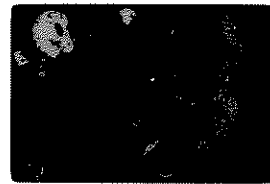
UXN

5, 33 FEB 74 P7  
60667,1 3.4



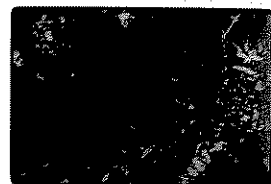
UXN. Brown vein on  
contact. another

6, 33 FEB 74 P7  
60645,1 3.4



Contact. another in weak  
point mix

7, 33 FEB 74 P7  
60645,1 3.4



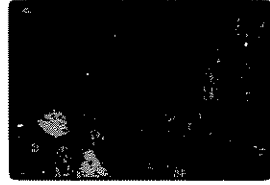
UXN

8, 33 FEB 74 P7  
60645,1 2.7



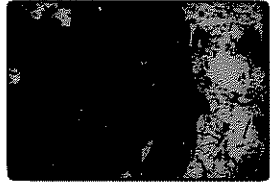
Same as 7

9, 33 FEB 74 P7  
60645,1 2.7



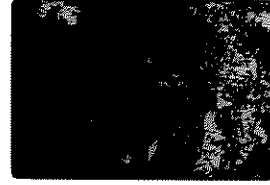
UXN

0, 33 FEB 74 P7  
60645,1 2.7



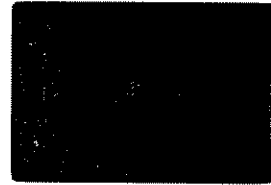
Same as 6

11, 33 FEB 74 P7  
60645,1 2.7



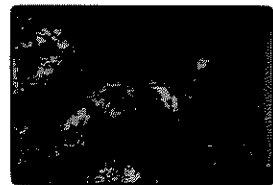
UXN

12, 33 FEB 74 P7  
60645,1 0.9



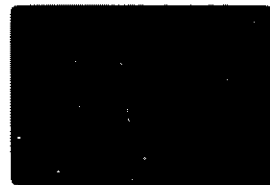
ht. last injec into mix

13, 33 FEB 74 P7  
60645,1 0.9



UXN

14, 33 FEB 74 P7  
60539,1 3.4



Contact. white, pe relics  
family pulveres. matrix  
showed pe stringy into matrix

15, 33 FEB 74 P7  
60539,1 3.4



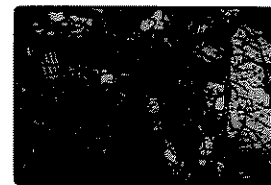
UXN

16, 33 FEB 74 P7  
60539,1 3.4



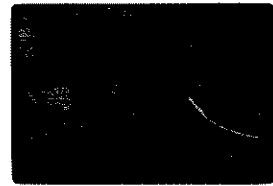
Another view showing  
large pe relic & also rich  
zone one side

17, 33 FEB 74 P7  
60539,1 3.4



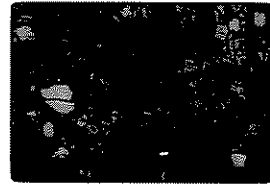
UXN

18, 33 FEB 74 P7  
60539,1 2.2



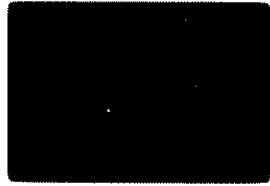
Close of last matrix. Rich  
& pe. white - = orig. grain  
size? Note local mass pe's

19, 33 FEB 74 P7  
60539,1 2.2



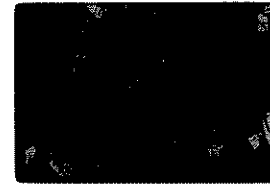
UXN

20, 33 FEB 74 P7  
60539,1 0.9



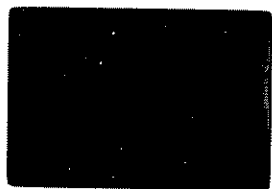
Close of new pe. Lathes  
most matrix pe. relic

21, 33 FEB 74 P7  
60539,1 0.9



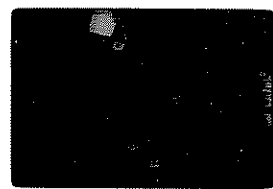
UXN

22, 33 FEB 74 P7  
60539,1 0.9



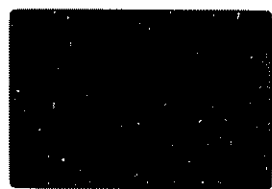
Close of interstitial text.  
in mafic zone part

23, 33 FEB 74 P7  
60539,1 0.9



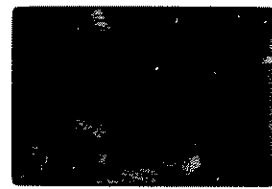
UXN

24, 33 FEB 74 P7  
60539,1 0.9



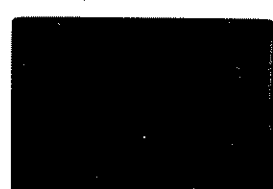
Close of interstitial mafic  
zone? in mafic zone  
part

25, 33 FEB 74 P7  
60539,1 0.9



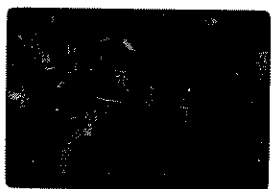
UXN

26, 33 FEB 74 P7  
65745,1 3.4



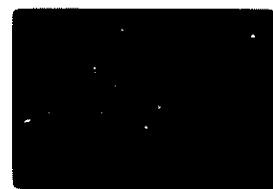
Optical 65745-like rock

27, 33 FEB 74 P7  
65745,1 3.4



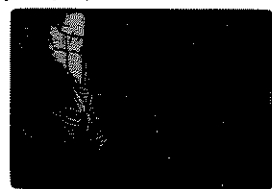
UXN

28, 33 FEB 74 P7  
65745,1 3.4



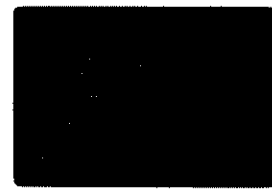
Different view w/ large  
pols

29, 33 FEB 74 P7  
65745,1 3.4



UXN

30, 33 FEB 74 P7  
65745,1 3.4



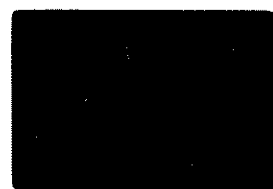
Single pole, Oliv. &  
Spinel on pc. cum.

32, 33 FEB 74 P7  
65745,1 2.2



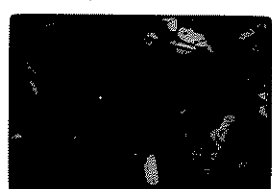
Close of spinel - 2 grains?  
overgrowth of wall of pc

33, 33 FEB 74 P7  
65745,1 3.4



Pole. Oliv + large pc

34, 33 FEB 74 P7  
65745,1 3.4



UXN

35, 33 FEB 74 P7  
65745,1 3.4



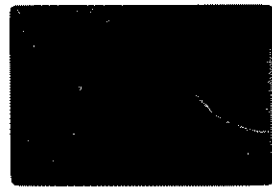
Single pole Oliv + sp

36, 33 FEB 74 P7  
65745,1 3.4



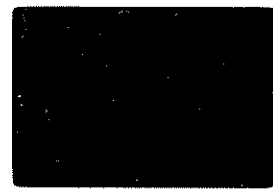
UXN

37, 33 FEB 74 P7  
65745,1 2.2



Close of sp showing  
marginal shell of pc

38, 33 FEB 74 P7  
65745,1 2.2



Same as 37