

14, 1642
67415, 13
SEP 4 P 3
3.3mm



Several dark, hair-like inclusions
in field in center of lens. Bright
outside with glowing lining

19, 1642
67025, 14
SEP 4 P 3
3.3mm

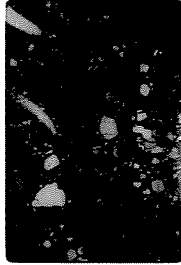


around 18 4XN

15, 1642
around 14 4X N
SEP 4 P 3
3.3mm

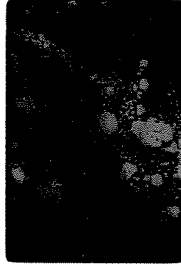


16, 1642
67415, 13
SEP 4 P 3
3.3mm



"inches area with
"heteromorphous" 4XN

17, 1642
67415, 13
SEP 4 P 3
3.3mm



around 16, ~~16~~

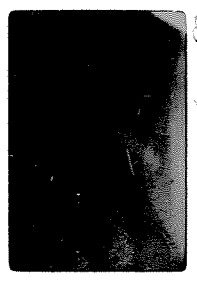
18, 1642
67025, 14
SEP 4 P 3
3.3mm



shaded PE in grain
partic m

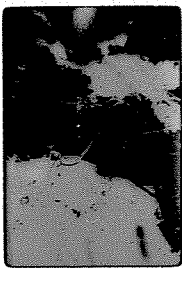
20, 1643 SEP 4 P8 3.3mm

65035, 7



data elastic anorthite not red for pyroxene

26, 1643 SEP 4 P8 3.3mm 65035, 6



orthoclase anorthite orthoclase pyroxene later plagioclase view

21, 1643 SEP 4 P8 3.3mm

65036, 7



same as 20 UXX

27, 1643 SEP 4 P8 3.3mm 65035, 6



same as 26 UXX

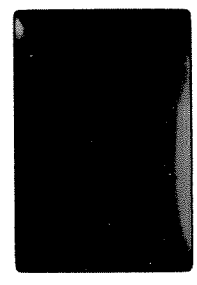
36, 1643 SEP 4 P8 3.3mm 65035, 15



diff. view

22, 1643 SEP 4 P8 3.3mm

65035, 7



same as 20 - feldspar later

28, 1643 SEP 4 P8 3.3mm 65035, 6



another view

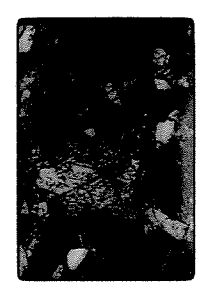
(37) 1, 1643 SEP 4 P8 3.3mm 65035, 15



same as 36 UXX

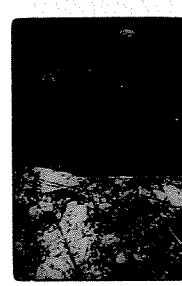
23, 1643 SEP 4 P8 3.3mm

65035, 7



same as 20 UXX

29, 1643 SEP 4 P8 3.3mm 65035, 6



same as 28, UXX

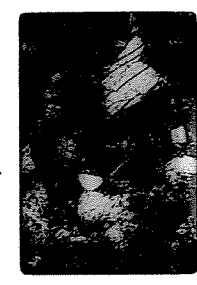
30, 1643 SEP 4 P8 3.3mm 65035, 14 65035, 15



PG plagioclase texture later

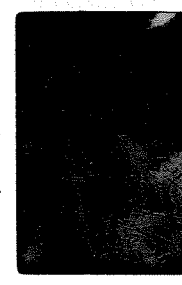
24, 1643 SEP 4 P8 3.3mm

65035, 7



another view UXX

34, 1643 SEP 4 P8 3.3mm 65035, 15



textural anisotropy

31, 1643 SEP 4 P8 3.3mm 65035, 14 65035, 15



same as 30 UXX

32, 1643 SEP 4 P8 3.3mm 65035, 14



PG plagioclase

33, 1643 SEP 4 P8 3.3 65035, 14



same as 32 UXX

(26) 2, 1643 SEP 4 P8 7mm 65036, 13



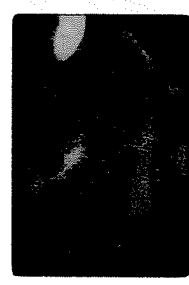
clear pink granite pe. one grain is labradorite PE of that side

(27) 3, 1643 SEP 4 P8 7mm 65036, 13



same as 3 UXX

(38) 4, 1643 SEP 4 P8 9mm 65036, 13



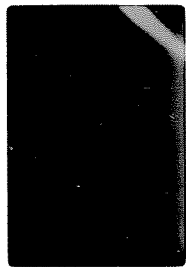
diff. view

12915, 1643
65-056, 13
SEP 1948
'9 mm



ORANGE CO 4 UXX

1,44 FEB 1995 8.3
60015,125



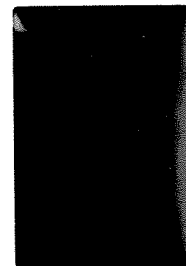
Catocalpa minor Noctua

2,44 FEB 1995 8.3
60015,125



LXIV

3,44 FEB 1995 8.3
60015,125



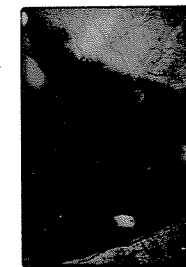
Clear

4,44 FEB 1995 8.3
60015,125



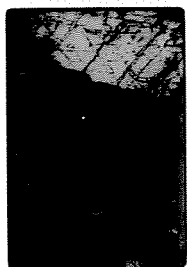
LXIV

5,44 FEB 1995 8.3
60015,121



Quercus in stem, long
PC, Catocalpa minor Noctua

6,44 FEB 1995 8.3
60015,121



LXIV

7,44 FEB 1995 8.3
60015,121



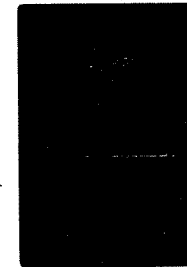
After PCs in pet. location
minor catocalpa Noctua

8,44 FEB 1995 8.3
60015,121



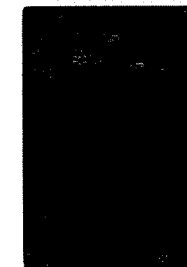
LXIV

9,44 FEB 1995 8.3
60017,123



Fruity smell, white clasts,
violet phase mixed with

10,44 FEB 1995 8.3
60017,123



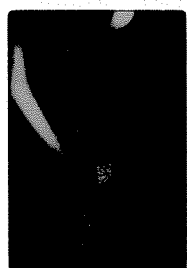
LXIV

11,44 FEB 1995 6.6
60025,113



Gen. Views

12,44 FEB 1995 6.6
60025,113



LXIV

13,44 FEB 1995 6.6
60025,113



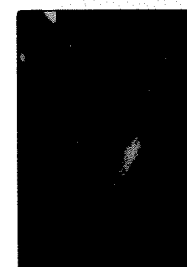
Another

14,44 FEB 1995 6.6
60025,113



LXIV

15,44 FEB 1995 8.3
60025,113



Clear

16,44 FEB 1995 8.3
60025,113

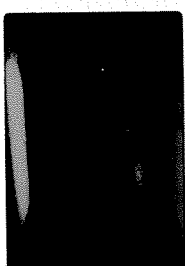


17,44 FEB 1995 8.3
60025,115



Catocalpa minor Noctua

18,44 FEB 1995 8.3
60025,115



LXIV

19,44 FEB 1995 8.3
60025,116



Gen. Views

20,44 FEB 1995 8.3
60025,116



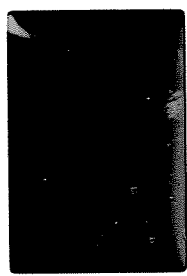
LXIV

21, 44 FEB 75P5
60255716 8.3



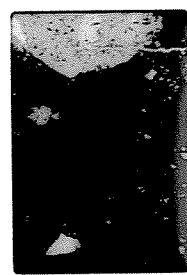
V.S. g. 2190 after PK?

22, 44 FEB 75P5
60255716 8.3



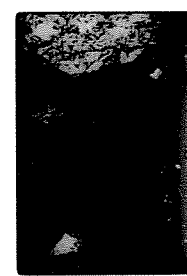
LXN

23, 44 FEB 75P5
60255725 8.3



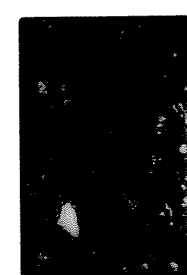
68415-type cleat of D5's

24, 44 FEB 75P5
60255725 8.3



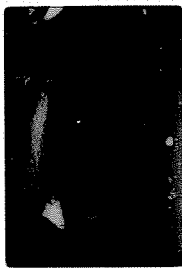
LXN

25, 44 FEB 75P5
60255725 8.3



Flow struc.

26, 44 FEB 75P5
60255725 8.3



LXN

27, 44 FEB 75P5
60255781 8.3



68415-type cleat, D2 & 4
cleat, splenoid mix

28, 44 FEB 75P5
60255781 8.3



LXN

29, 44 FEB 75P5
6115577 6.6

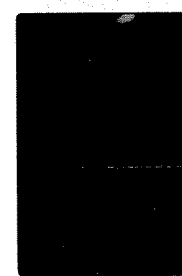
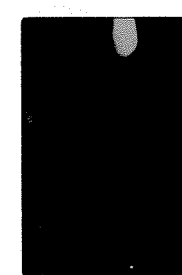


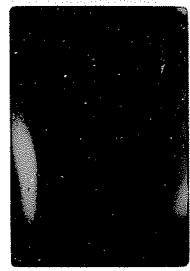
Fig. 6-68415-type cleat etc

30, 44 FEB 75P5
6115577 6.6



LXN

31, 44 FEB 75P5
61175108 5



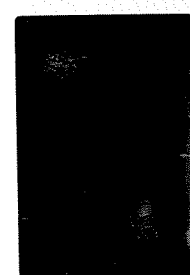
Broken 68415-type cleat

32, 44 FEB 75P5
61175108



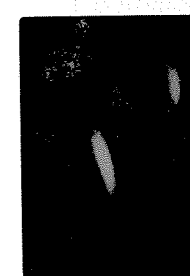
LXN

33, 44 FEB 75P5
61175108 8.3



Gen. Views

34, 44 FEB 75P5
61175108 8.3



LXN

35, 44 FEB 75P5
6129532 8.3



Gen Views

36, 44 FEB 75P5
6129532 8.3



LXN

37, 44 FEB 75P5
6129532 8.3



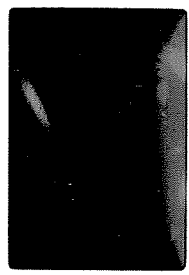
Gen. Views

38, 44 FEB 75P5
6129532 8.3



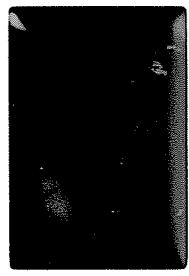
LXN

1, 45 FEB 75P5
63509, 5 3.3



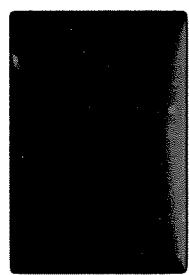
Revert. of 63509, 5 type tracks
in catalase test

2, 45 FEB 75P5
63509, 3 3.3



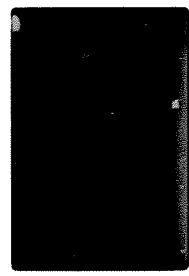
LXN

3, 45 FEB 75P5
62239, 38 8.3



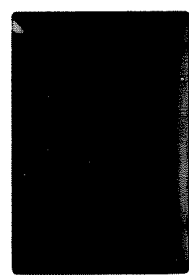
Coarse pink nk relationship
Narrow

4, 45 FEB 75P5
62239, 38 8.3



LXN

5, 45 FEB 75P5
63509, 5 3.3



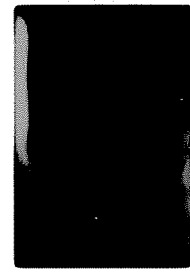
Slightly broken by

6, 45 FEB 75P5
63509, 5 3.3



LXN

7, 45 FEB 75P5
64439, 26 3.3



Clarity of track

8, 45 FEB 75P5
64439, 26 3.3



LXN

9, 45 FEB 75P5
64439, 29 8.3



Reverberated track

10, 45 FEB 75P5
64439, 29 8.3



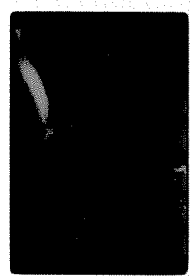
LXN

11, 45 FEB 75P4
64439, 29 3.3



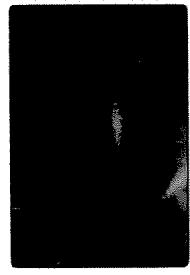
LXN

12, 45 FEB 75P5
64439, 29 3.3



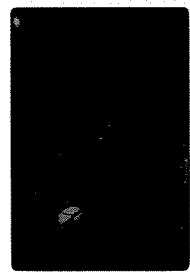
LXN

13, 45 FEB 75P5
64036, 6 5



Soil bx

14, 45 FEB 75P5
64036, 6 5



LXN

15, 45 FEB 75P5
63509, 5 3.3



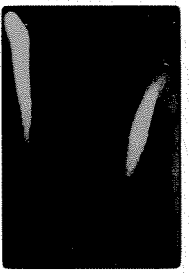
Same as 5

16, 45 FEB 75P5
63509, 5 3.3



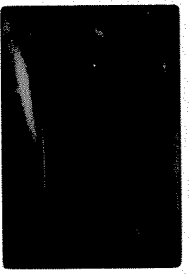
LXN

17, 45 FEB 75P5
64439, 26 3.3



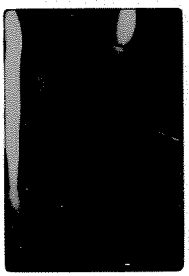
Same as 7

18, 45 FEB 75P5
64439, 26 3.3



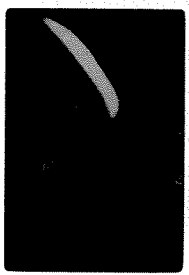
LXN

19, 45 FEB 75P5
64439, 29 8.3



Same as 9

20, 45 FEB 75P5
64439, 29 8.3



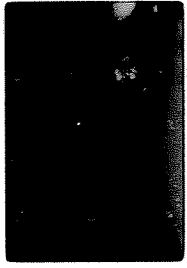
LXN

21, 45
62435, 21
FEB 1995
8.3



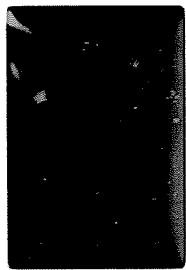
Same as 11

26, 45
62435, 21
FEB 1995
8.3



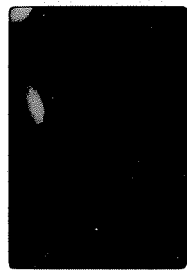
LXN

22, 45
62435, 22
FEB 1995
8.3



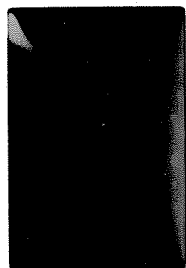
LXN

27, 45
62455, 49
FEB 1995
8.3



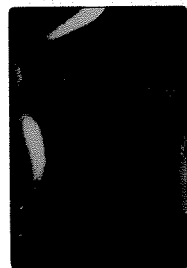
Gen. View

28, 45
62015, 20
FEB 1995
8.3



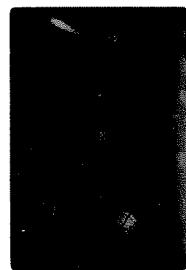
Gen. View

28, 45
62455, 49
FEB 1995
8.3



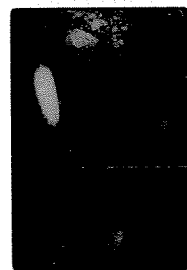
LXN

24, 45
62015, 20
FEB 1995
8.3



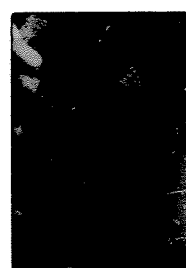
LXN

29, 45
62735, 14
FEB 1995
6.6



Gen. View

25, 45
62435, 21
FEB 1995
8.3



Next to/above of D3 & D4
by 51 pole lighter D3

30, 45
62735, 14
FEB 1995
6.6



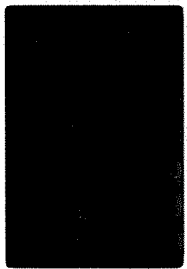
LXN

31, 45
62445, 13
FEB 1995
5



Weak pink

32, 45
62445, 13
FEB 1995
5



LXN

33, 45
62448, 14
FEB 1995
5



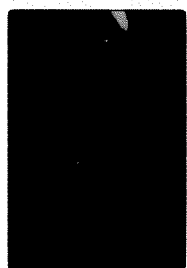
68-115-type

34, 45
62448, 14
FEB 1995
5



LXN

35, 45
68416, 20
FEB 1995
8.3



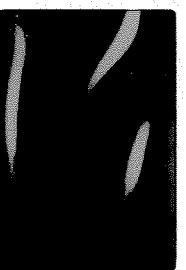
Textured inhomogeneity

36, 45
68416, 20
FEB 1995
8.3



LXN

37, 45
68416, 20
FEB 1995
8.3



Textured inhomogeneity