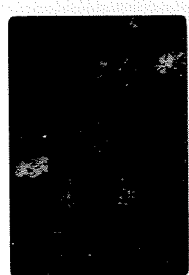


18,1  
L20 (13)  
DEC 1955  
2.2



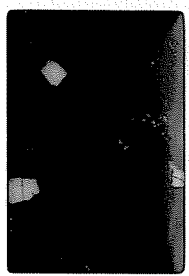
9 Rings - 14 rings, 1 piece glass  
symmetrical, 5 pr, 10110, 10px x 8

25,1  
L20 (5)  
DEC 1955  
3.4



LXN

19,1  
L20 (13)  
DEC 1955  
2.2



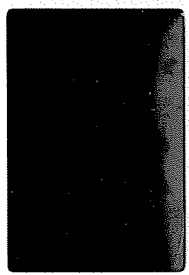
LXN

24,1  
L20 (5)  
DEC 1955  
3.4



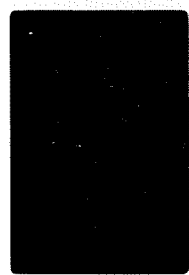
Different part of same

20,1  
L20 (13)  
DEC 1955  
3.4



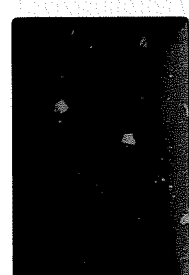
8 Rings, 10 rings, 3 rings,  
5 pr, 10110? 10px x 2

21,1  
L20 (5)  
DEC 1955  
3.4



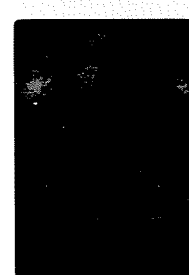
same as 20

21,1  
L20 (13)  
DEC 1955  
3.4



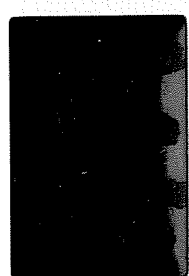
LXN

26,1  
L20 (5)  
DEC 1955  
3.4



LXN

22,1  
L20 (5)  
DEC 1955  
3.4



Doesn't seem to show  
bright spots. No crystals

27,1  
L20 (5)  
DEC 1955  
0.6

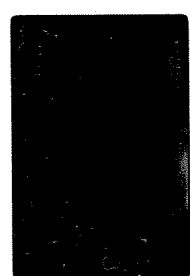


28,1  
L20 (5)  
DEC 1955  
0.6



LXN

29,1  
L20 (5)  
DEC 1955  
0.7



Recent glass

30,1  
L20 (5)  
DEC 1955  
0.7



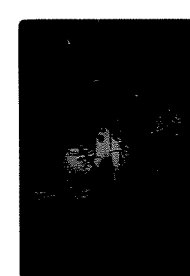
LXN

31,1  
L20 (5)  
DEC 1955  
0.7



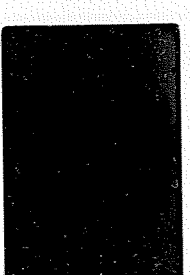
Diff. intervals. Same.

32,1  
L20 (5)  
DEC 1955  
0.7



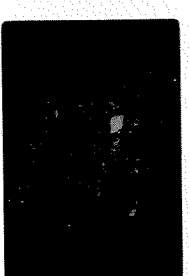
LXN

33,1  
L20 (5)  
DEC 1955  
0.7



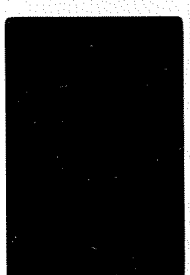
P1 type ring

34,1  
L20 (5)  
DEC 1955  
0.7



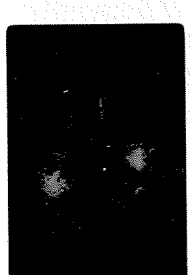
LXN

35,1  
L20 (5)  
DEC 1955  
0.7



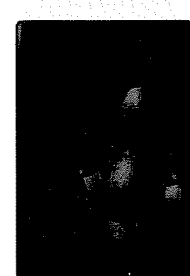
P2 - fairly annealed  
crystals

36,1  
L20 (5)  
DEC 1955  
0.7



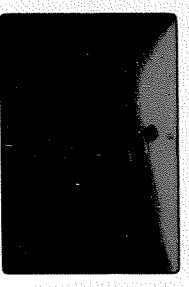
LXN

37,1  
L20 (5)  
DEC 1955  
0.7

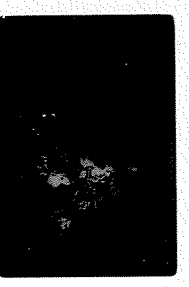


LXN P2

1,2  
L 20 (10) DEC 1995 3.4

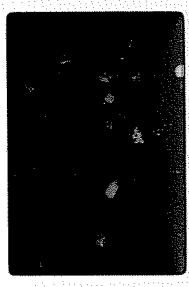


6,2  
L 20 (10) DEC 1995 0.6



LXN

2,2  
L 20 (10) DEC 1995 3.4



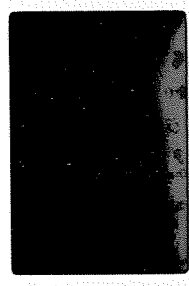
LXN

7,2  
L 20 (10) DEC 1995 0.6

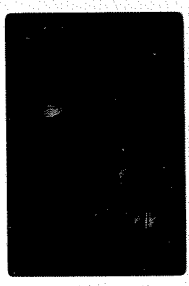


Barnard Pt; 4 glycans  
mbx

3,2  
L 20 (10) DEC 1995 3.4



8,2  
L 20 (10) DEC 1995 0.6



LXN

4,2  
L 20 (10) DEC 1995 3.4



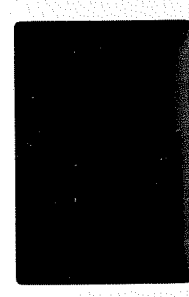
LXN

9,2  
L 20 (10) DEC 1995 0.6



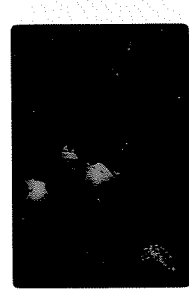
Ophit bean, D2 in 4 glycans  
mbx, D2 frag

5,2  
L 20 (10) DEC 1995 0.6



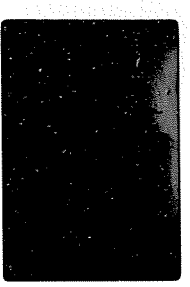
Ophit bean - polyph. + 2 dth  
of 10000 mbx

10,2  
L 20 (10) DEC 1995 0.6

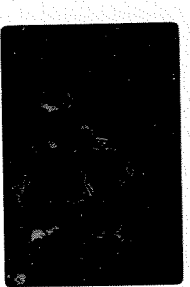


LXN

11,2  
L 20 (10) DEC 1995 3.4

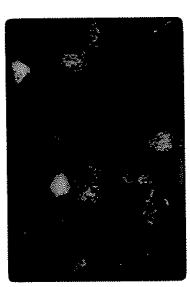


16,2  
L 20 (10) DEC 1995 0.6



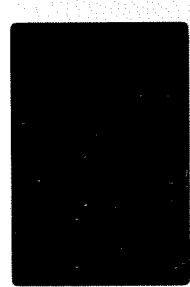
~~LXN~~ LXN

12,2  
L 20 (10) DEC 1995 3.4

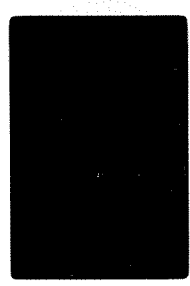


LXN

17,2  
L 20 (10) DEC 1995 0.6

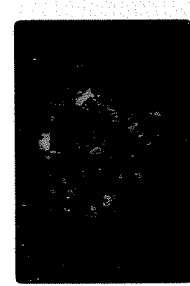


13,2  
L 20 (10) DEC 1995 0.9



2 ophit frags - 4th & 5th  
1 possible

18,2  
L 20 (10) DEC 1995 0.6



LXN

14,2  
L 20 (10) DEC 1995 0.9



LXN

15,2  
L 20 (10) DEC 1995 0.6



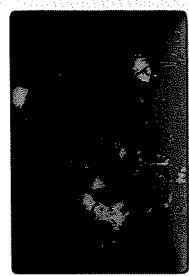
Ophit frag

19, 2  
L20 (10)  
DEC 1985  
0.6



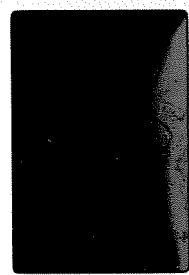
Amorphous? Lactone like

20, 2  
L20 (10)  
DEC 1985  
0.6



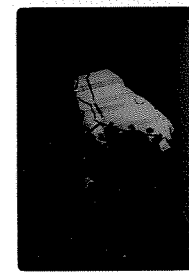
LXN

21, 2  
L20 (10)  
DEC 1985  
0.6



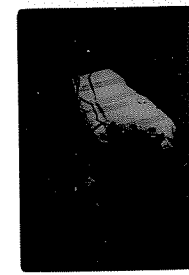
Especially like 18445-03  
Lactone structure  
PC

22, 2  
L20 (10)  
DEC 1985  
0.6



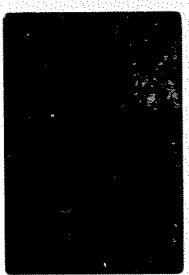
LXN

23, 2  
L20 (10)  
DEC 1985  
0.6



Structure as R1

24, 2  
L20 (2)  
DEC 1985  
0.9  
Porklebl, benzofels - note  
small vertical streaks in PC



25, 2  
L20 (2)  
DEC 1985  
0.9  
LXN



26, 2  
L20 (2)  
DEC 1985  
0.9  
H. nucleolar like



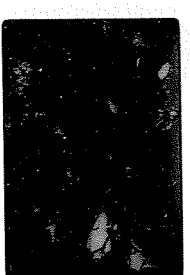
27, 2  
L20 (2)  
DEC 1985  
0.9  
LXN



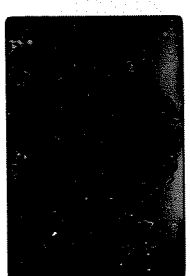
28, 2  
L20 (2)  
DEC 1985  
0.7  
D2 not nucleol structure -  
pinky homologous like 18445



29, 2  
L20 (2)  
DEC 1985  
0.7  
LXN



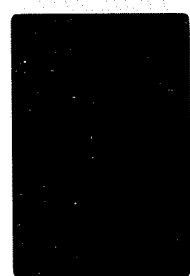
30, 2  
L20 (2)  
DEC 1985  
0.9  
Porklebl homologous



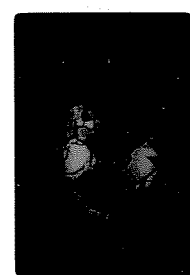
31, 2  
L20 (2)  
DEC 1985  
0.9  
LXN



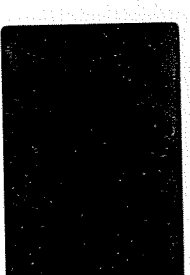
32, 2  
L20 (18)  
DEC 1985  
0.8  
Granular. Pinky homologous



33, 2  
L20 (18)  
DEC 1985  
0.6  
LXN

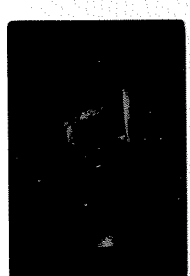


34, 2  
L20 (18)  
DEC 1985  
0.6



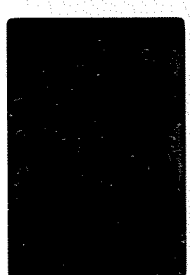
PC of heteroced PC

35, 2  
L20 (18)  
DEC 1985  
0.6



LXN

36, 2  
L20 (18)  
DEC 1985  
0.9



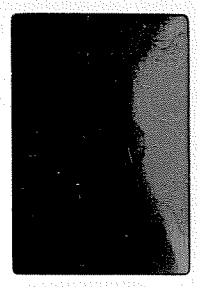
Structure? Good. D/S, granular  
mb, PC clear in mb

37, 2  
L20 (18)  
DEC 1985  
0.9



LXN

1,3  
L20(18)  
DEC 1985  
0.6



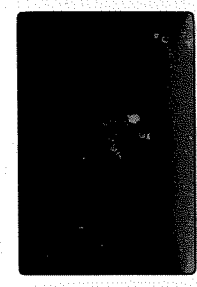
Immunostained texture

6,3  
L30(18)  
DEC 1985  
0.6



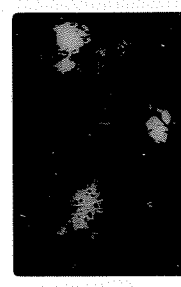
"Use" greenish-polyg. homologs. Big P-1 smudges + 2 D1-D2 frags

2,3  
L20(18)  
DEC 1985  
0.6



LXN

7,3  
L20(18)  
DEC 1985  
0.6



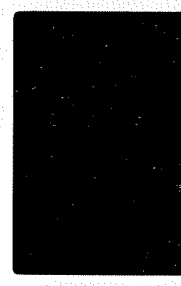
LXN

3,3  
L20(18)  
DEC 1985  
0.6



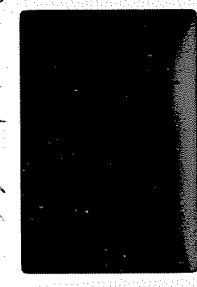
Visible phase p

8,3  
L20(18)  
DEC 1985  
0.6



Epithelial, small pc (2 pink cytotils) w/ prominent in along mb & D1; brown glial cells

4,3  
L20(18)  
DEC 1985  
0.6



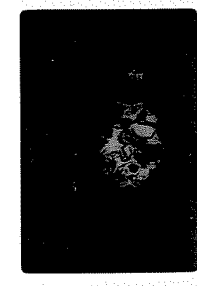
Polyethyl homologs, round bill in ppx?

9,3  
L20(18)  
DEC 1985  
0.6



More brown? Px along pc axes

5,3  
L20(18)  
DEC 1985  
0.6



LXN

10,3  
L20(18)  
DEC 1985  
0.6



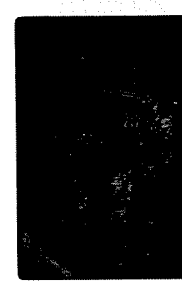
LXN

11,3  
L20(18)  
DEC 1985  
0.6



Shaded more brown?

12,3  
L20(18)  
DEC 1985  
0.6



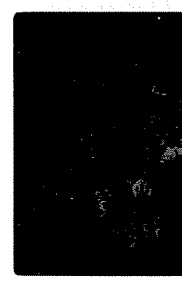
LXN

13,3  
L20(18)  
DEC 1985  
0.6



"cruc" granular polyg.

14,3  
L20(18)  
DEC 1985  
0.6



LXN

15,3  
L20(18)  
DEC 1985  
0.6



Px w/ green ppx

16,3  
L20(18)  
DEC 1985  
0.6



LXN

17,3  
L20(18)  
DEC 1985  
0.6



DR Camelys

18,3  
L20(18)  
DEC 1985  
0.6



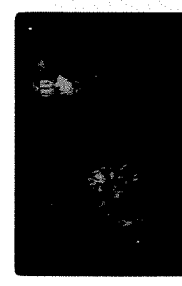
Amelys, Dr

19,3  
L20(18)  
DEC 1985  
0.6



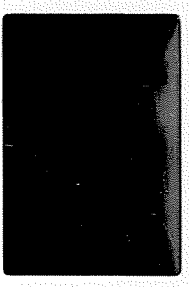
Dplu 2.1x

20,3  
L20(18)  
DEC 1985  
0.6



LXN

21,3 DEC 1998  
L20 (17) 0.9



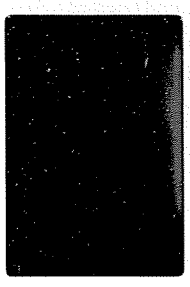
D1-2 w/ glass substrate  
re + dark qmb

26,3 DEC 1998  
L20 (20) 0.9



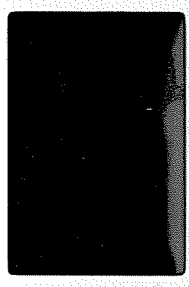
~~DR~~ qmb's, one ref  
clust of numerous granules.

31,3 DEC 1998  
L20 (20) 0.6



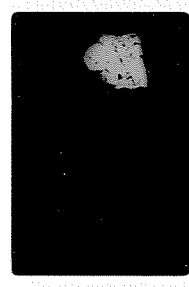
D2

27,3 DEC 1998  
L20 (17) 0.9



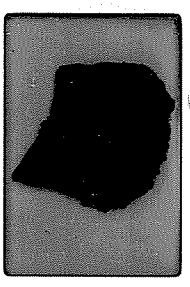
D2's + glassy mb

27,3 DEC 1998  
L20 (20) 0.9



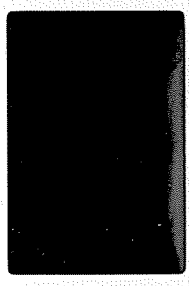
L20

32,3 DEC 1998  
L20 (20) 0.6



Recent brown glassy  
shred to place

28,3 DEC 1998  
L20 (17) 0.9



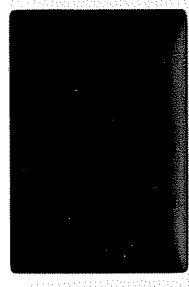
Interwoven, D2, D1-2,  
glassy mb's

28,3 DEC 1998  
L20 (20) 0.6



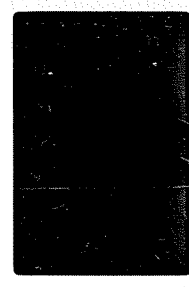
D2 + dark qmb

24,3 DEC 1998  
L20 (19) 0.6



new "granule-poly"

26,3 DEC 1998  
L20 (20) 0.6



Brown heavy string

25,3 DEC 1998  
L20 (20) 0.7

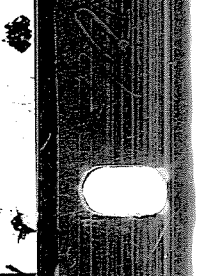
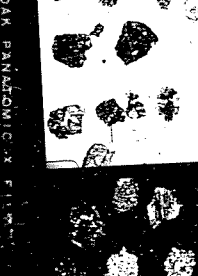
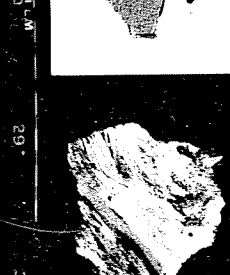
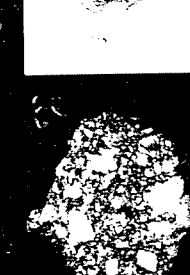
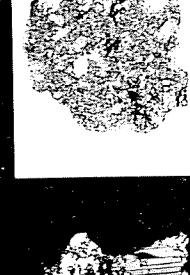
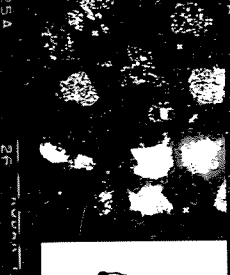
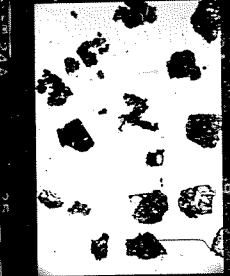
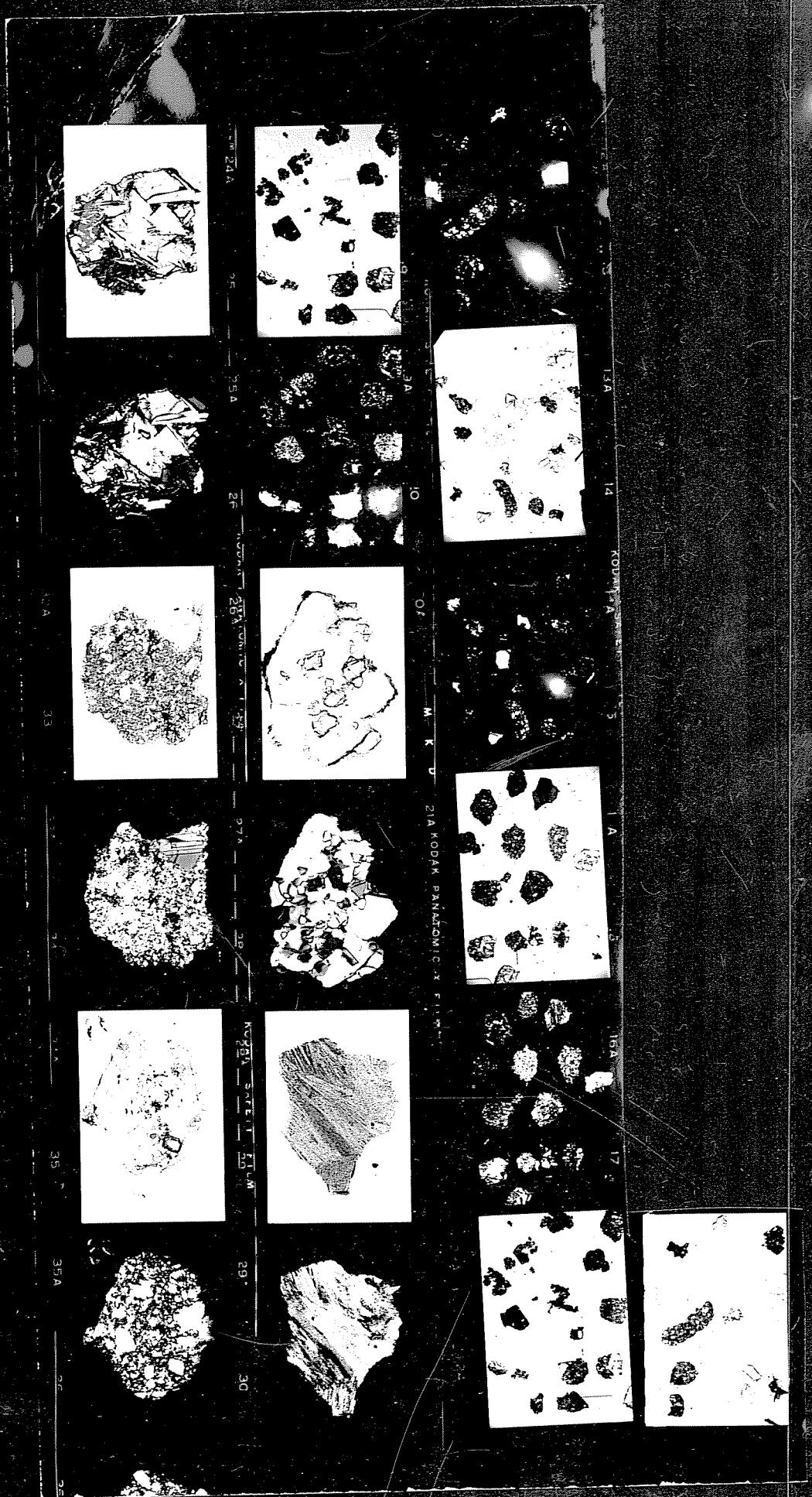


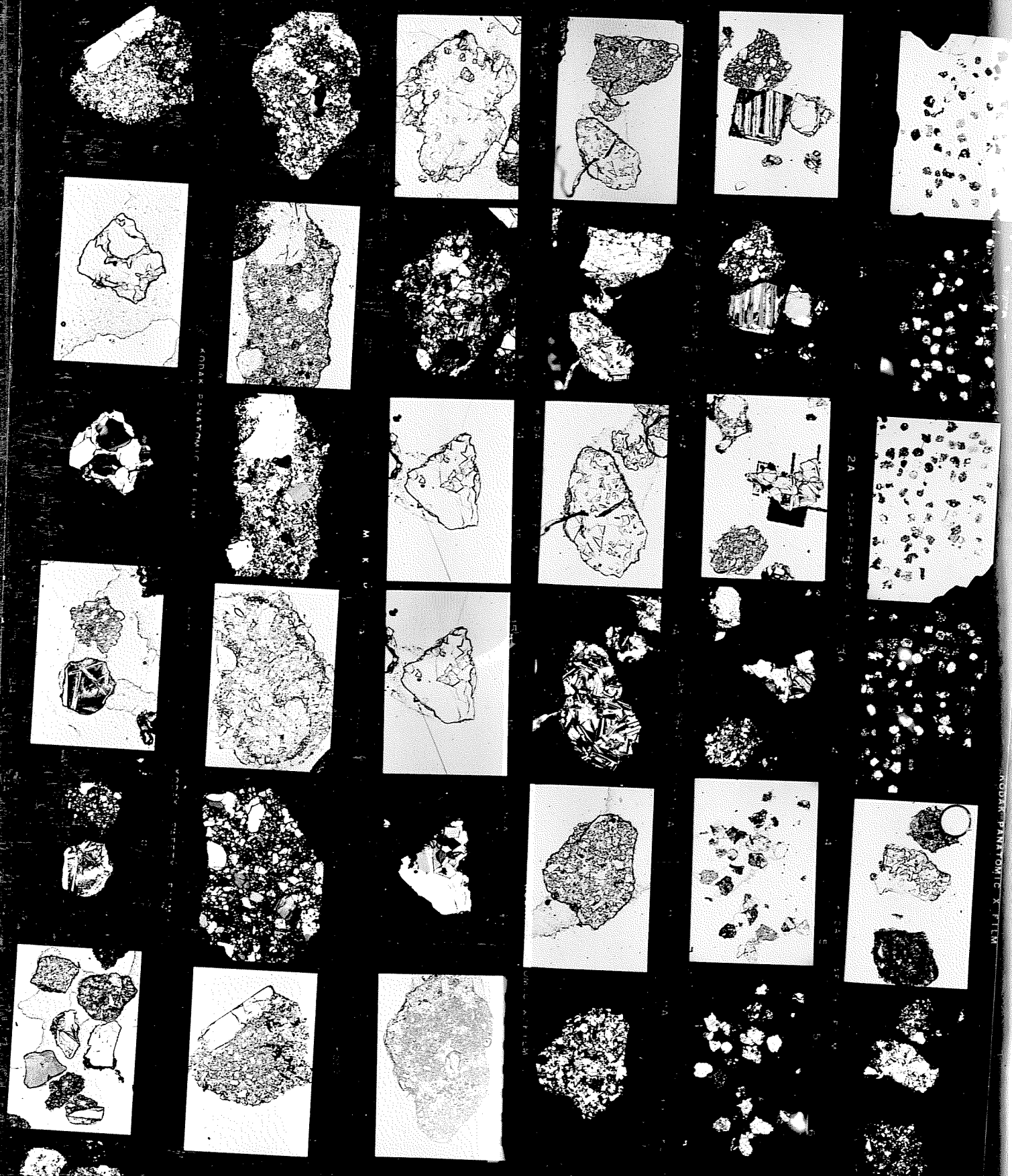
~~DR~~ dark qmb  
D1 dark qmb

30,3 DEC 1998  
L20 (20) 0.6



D1

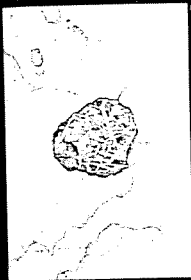




KODAK SAFETY FILM

KODAK SAFETY FILM

KODAK SAFETY FILM



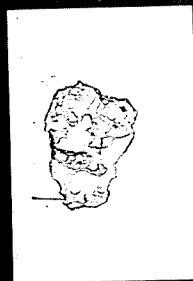
IA  
KODAK SAFETY FILM



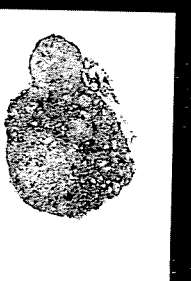
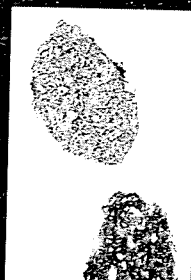
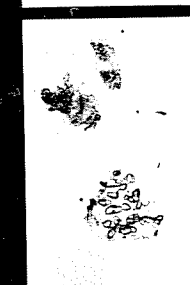
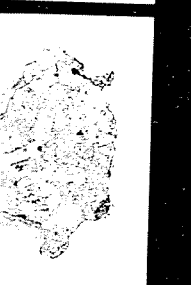
IA  
KODAK SAFETY FILM



IA  
KODAK SAFETY FILM



IA



IA

IA

IA

IA

IA

IA

IA

IA

IA

IA

IA

IA

IA

IA

IA

IA

IA

IA