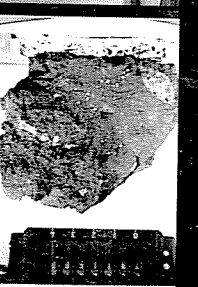
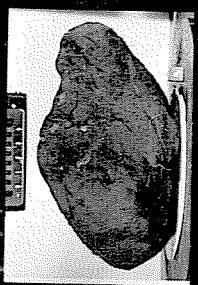
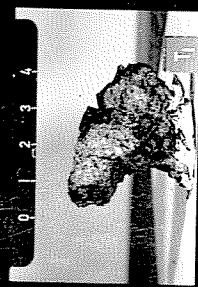
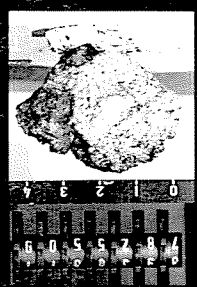
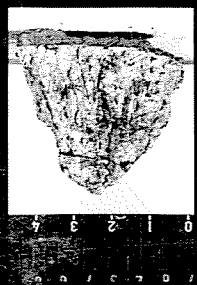
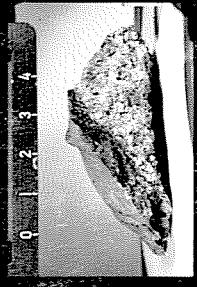
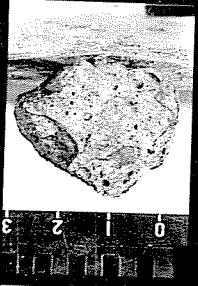
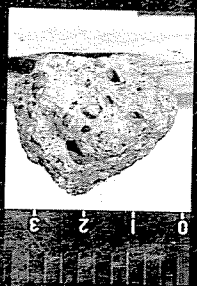
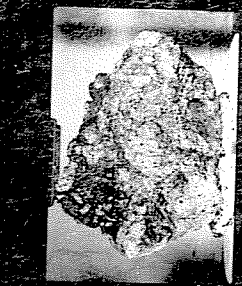


K C



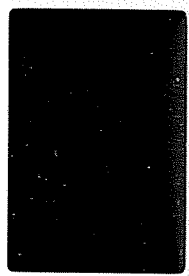
13
72415



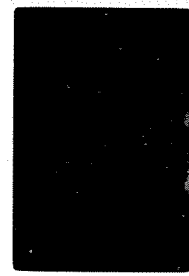
4
72435



14
72415



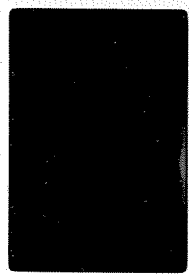
72435
NOV 13



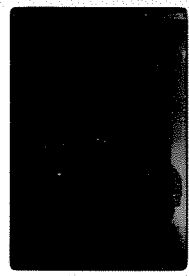
24
72435



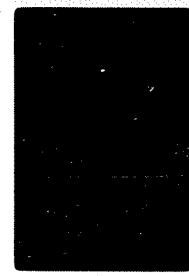
4-14
72435
APR 1973



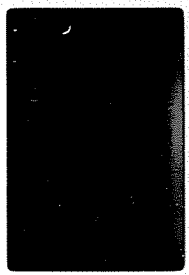
5-14
72435



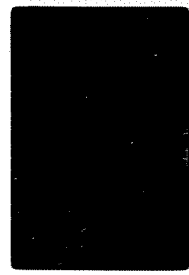
6-14
72435
APR 1973



8-14
72435



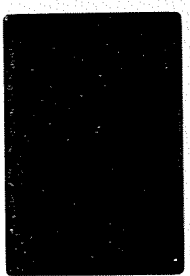
7-14
72435
APR 1973



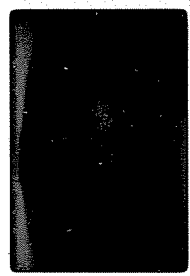
5
72435



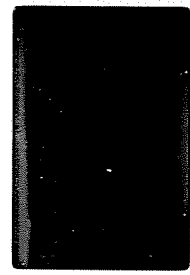
12-14
72536



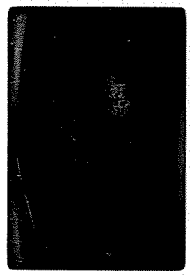
13-14
72536



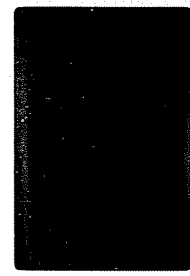
9-14
72536
APR 1973



14-14
72536



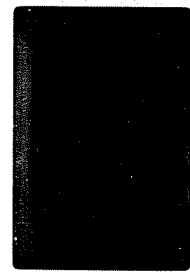
10-14
72536
APR 1973



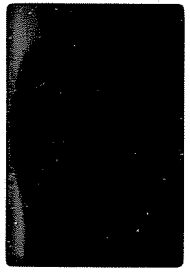
15-14
72536



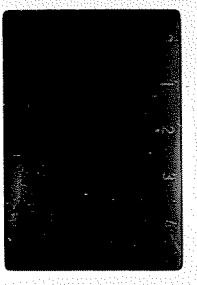
11-14
72536
APR 1973



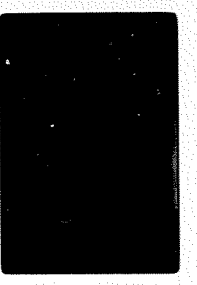
16-14
72536



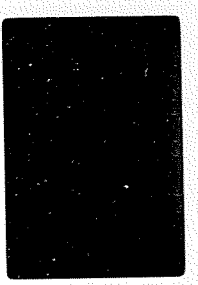
17-14 72548



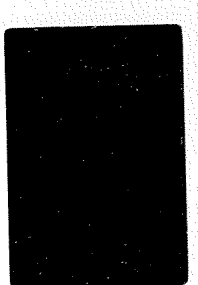
2-14 72735



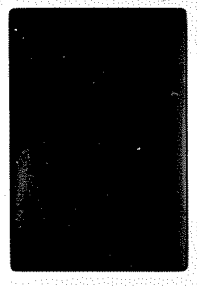
27-14 72736 APR 1986



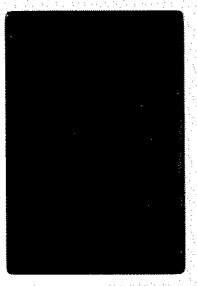
32-14 73215



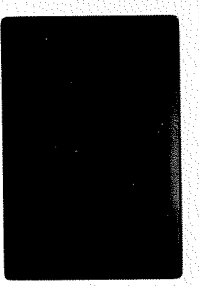
18-14 72548



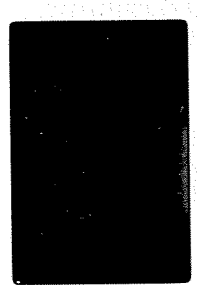
2-14 72735



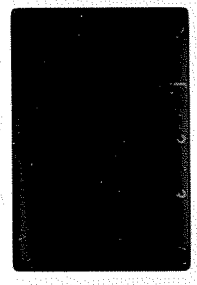
28-14 72736 APR 1986



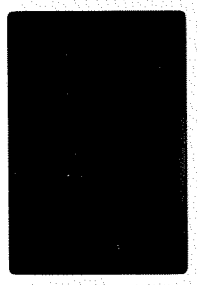
6 73215



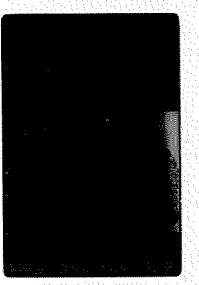
19-14 72548



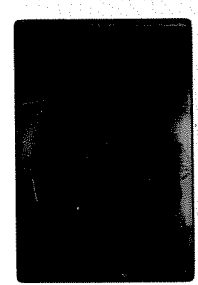
2-14 72735



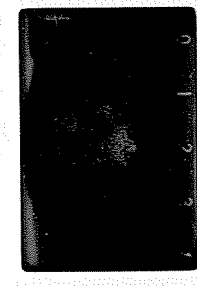
26-14 73155 APR 1986



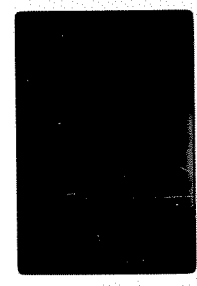
2-14 73215



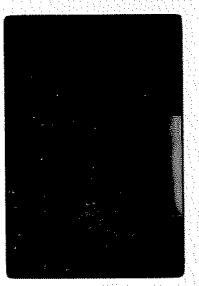
20-14 72548



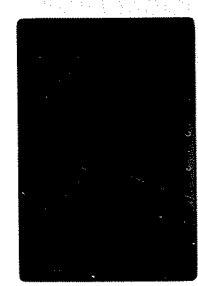
2-14 72735



30-14 73155 APR 1986



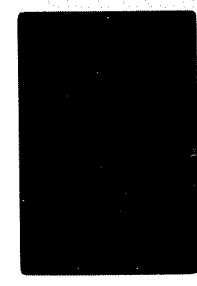
2-14 73216



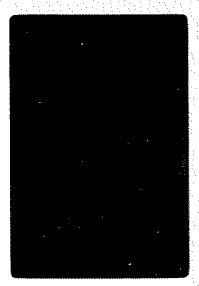
2-14 72548



2-14 72736



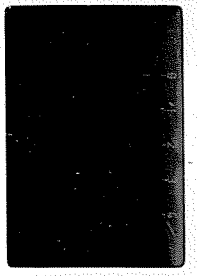
31-14 73215 APR 1986



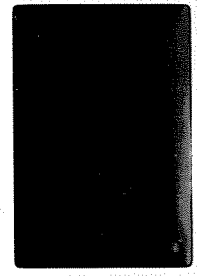
32-14 73216



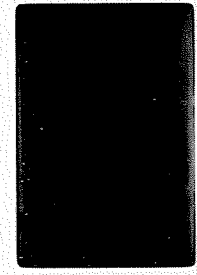
3-14 73217



1-15 73217



1-18 73217



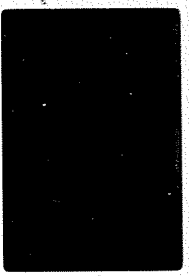
2-10 73217



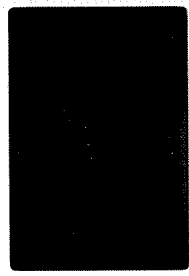
3-10 73218



4-15 73255



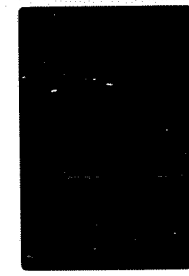
5-15 73255



6-15 73255



7-15 73255



8-15 73255



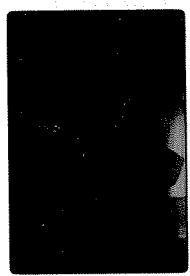
2-19 73255

MAY 1961



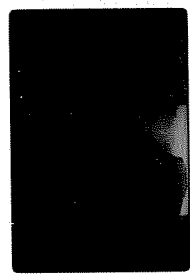
10-15 74235

MAY 1964



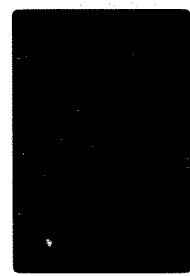
11-15 74235

MAY 1964



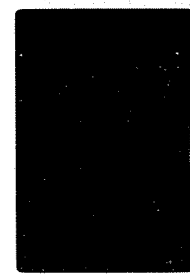
12-15 74275

MAY 1964



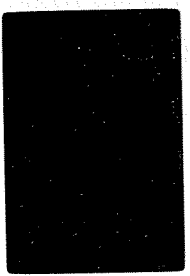
14-15 75255

MAY 1964



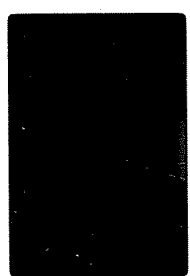
75055

NOV 1961



16-15

76015



17-15

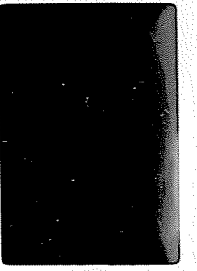
76015



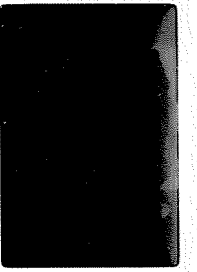
L123L

8123L

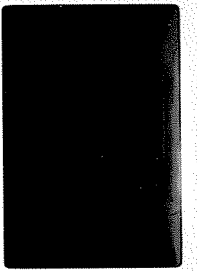
18-15
76015



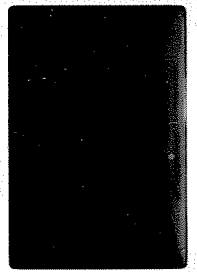
19-15
76015



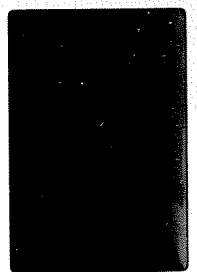
20-15
76035



21-15
76035



22-15
76035



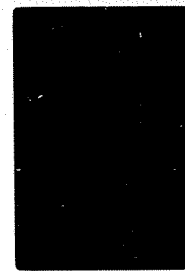
24-15
76055, 1



23-15
76055



26-15
76135



76135
NOV 1964



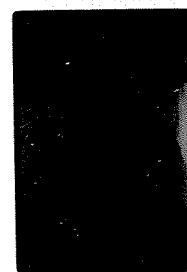
25-15
76135



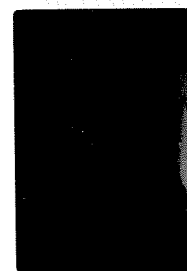
3-19
76135
MAY 1961



27-15
76135
MAY 1964



28-15
76135
MAY 1964



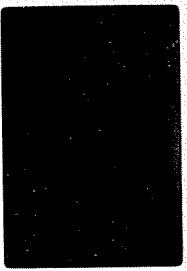
29-15
76136
MAY 1964



38-18
76136
MAY 1964



30-15
76136



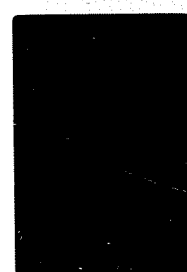
31-15
76136



32-15
76015



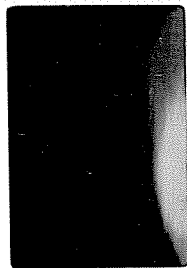
33-15
76015



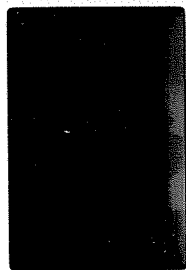
34-15
76015



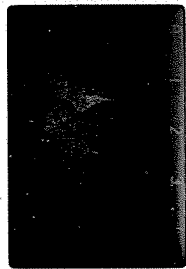
35-15
76215



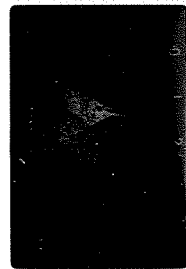
36-15
76215



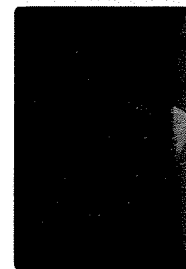
37-10
76235



1-16
76235
MAY 1984



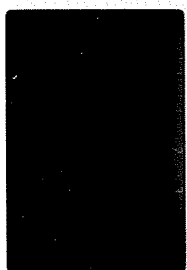
2-16
76235
MAY 1984



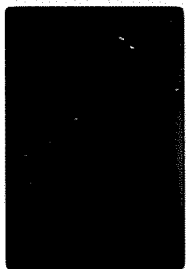
3-16
76236
MAY 1984



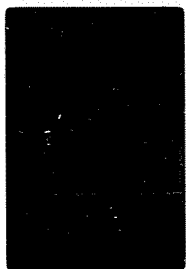
4-16
76236
MAY 1984



5-16
76236
MAY 1984



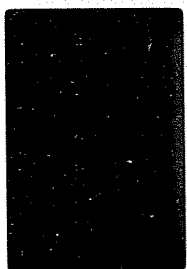
6-16
76236
MAY 1984



7-16
76255
MAY 1984



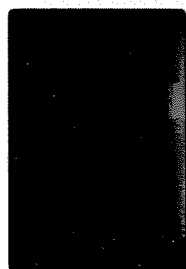
9-16
76255
MAY 1984



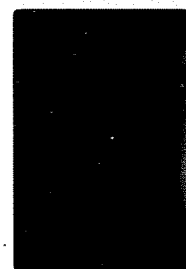
10-16
76255
MAY 1984



8-16
76255
MAY 1984



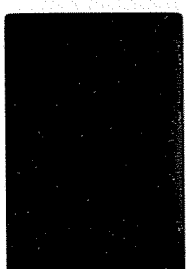
14-16
76255
MAY 1984



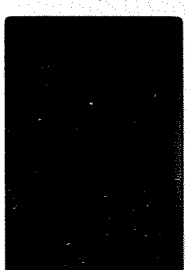
16-12
76255
MAY 1984



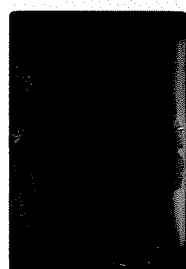
13-16
76255
MAY 1984



14-16
76255
MAY 1984



15-16
76275
MAY 1984



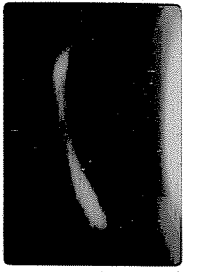
16-16
76275
MAY 1984



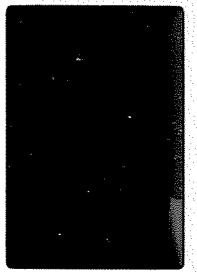
17-16
76295
MAY 1984



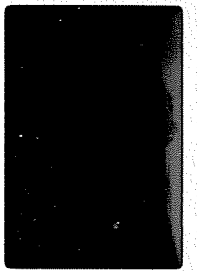
18-16
76295
MAY 1964



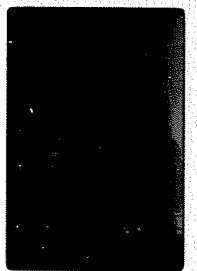
19-16
76295
MAY 1964



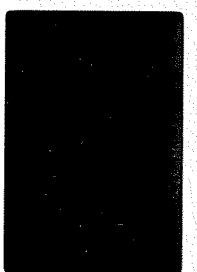
20-16
76295
MAY 1964



21-16
76315
MAY 1964



22-16
76315
MAY 1964



23-16
76535
MAY 1964



24-16
76535
MAY 1964



25-16
76535
MAY 1964



26-16
76535
MAY 1964



28-16
76535
MAY 1964



29-16
76535
MAY 1964



30-16
76535
MAY 1964



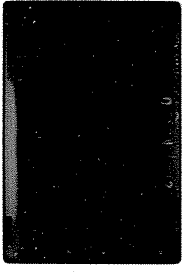
31-16
76535
MAY 1964



32-16
76535
MAY 1964



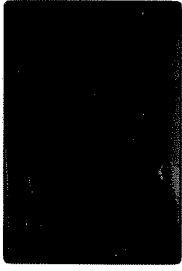
33-16
76537
MAY 1964



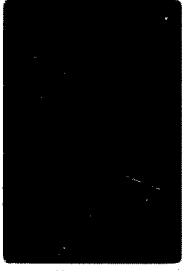
77019



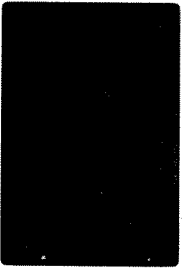
34-16
77017



77017



36-16
77017



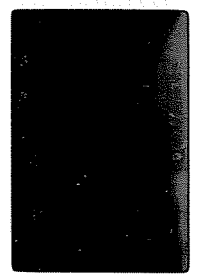
8P8

2-6

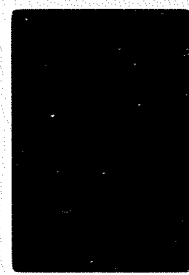
8P8

2-3

77017 NOV 13 1964

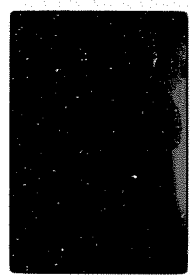


77017

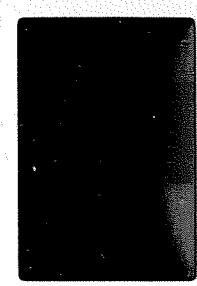


8481RVM 2-2

13 77035 NOV 13 1964

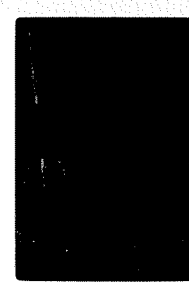


77017



8481RVM 2-4

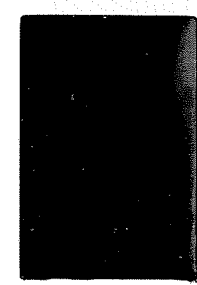
11 77017 NOV 13 1964



4-17 77035 MAY 13 1964



77017 NOV 13 1964



77017

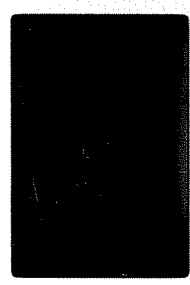


8481RVM 2-9

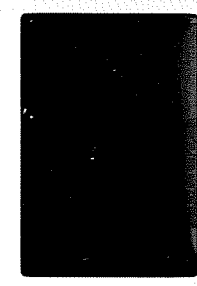
14 77035 NOV 13 1964



7-17 77077 MAY 13 1964



1-16 77017 MAY 13 1964



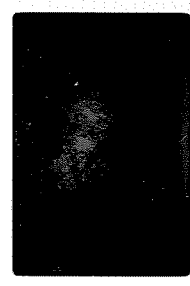
35-16 77017 MAY 13 1964



3-12 77035 MAY 13 1964



6-17 77077 MAY 13 1964



77017



8481RVM 2-11

2-11 77035 MAY 13 1964



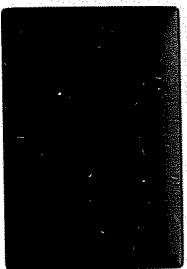
10-17 77075 MAY 13 1964



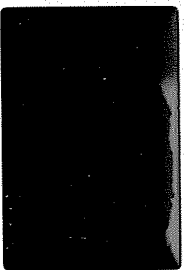
14-17 77115 MAY 13 1964



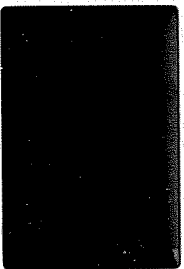
13-17 77115 MAY 1984



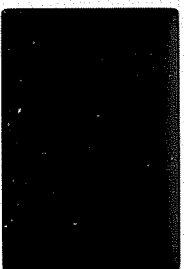
12-17 77115 MAY 1984



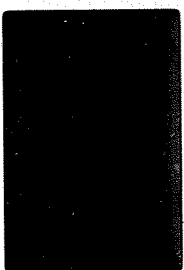
11-17 77115 MAY 1984



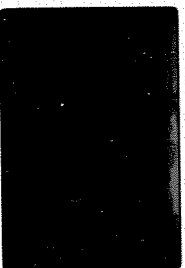
16-17 77135 MAY 1984



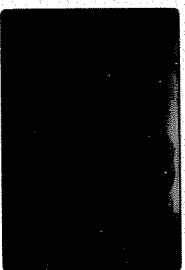
15-17 77135 MAY 1984



17-17 77135 MAY 1984



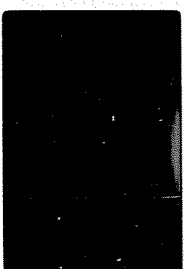
18-17 77135 MAY 1984



19-17 77115 MAY 1984



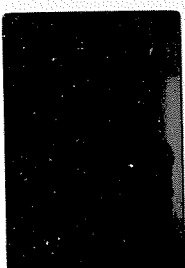
20-17 77515 MAY 1984



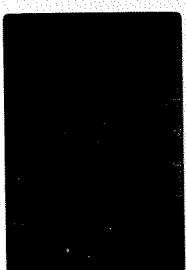
21-17 77515 MAY 1984



22-17 77515 MAY 1984



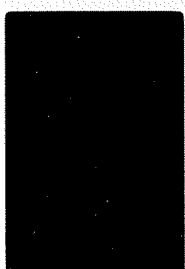
23-17 77516 MAY 1984



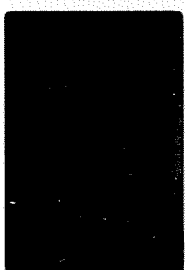
24-17 77516 MAY 1984



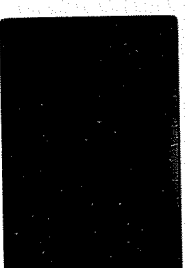
27-17 77517 MAY 1984



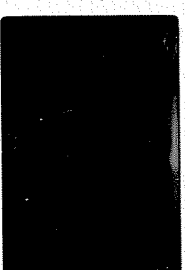
25-17 77517 MAY 1984



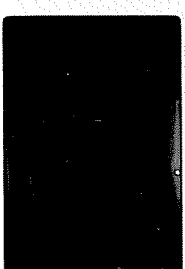
26-17 77517 MAY 1984



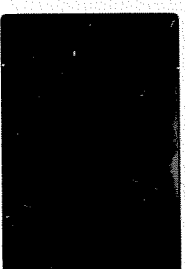
28-17 77518 MAY 1984



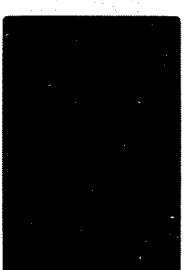
29-17 77519 MAY 1984



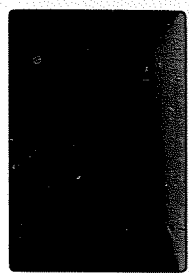
30-17 77535 MAY 1984



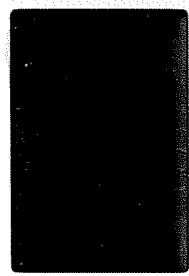
NOV 1984 77535



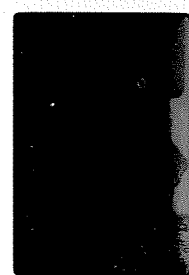
31-17
77536
MAY 1964



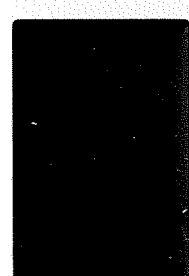
32-17
77536
MAY 1964



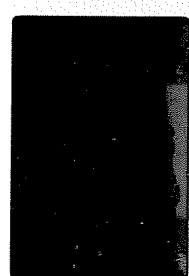
33-17
77537
MAY 1964



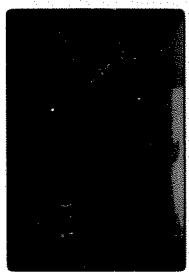
34-17
77537
MAY 1964



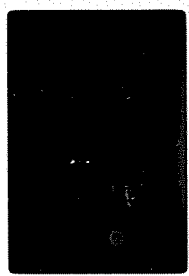
35-17
77538
MAY 1964



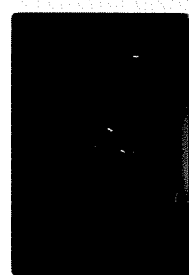
36-17
77538
MAY 1964



1-18
77539
MAY 1964



2-18
77539
MAY 1964



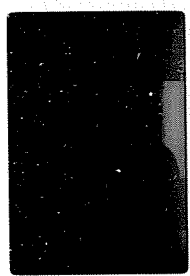
3-18
77539
MAY 1964



4-18
77539
MAY 1964



5-18
77545
MAY 1964



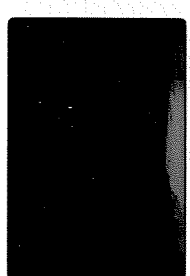
6-18
77545
MAY 1964



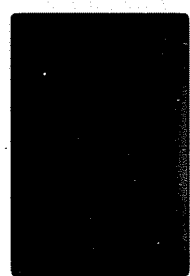
7-18
77545
MAY 1964



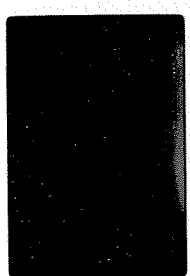
8-18
78235
MAY 1964



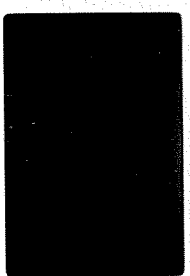
9-18
78230
MAY 1964



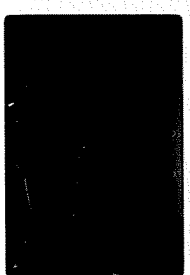
10-18
78235
MAY 1964



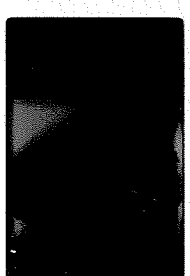
11-18
78236
MAY 1964



12-18
78236
MAY 1964



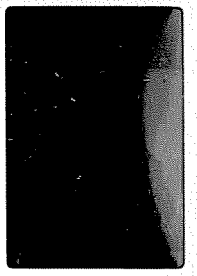
13-18
78236
MAY 1964



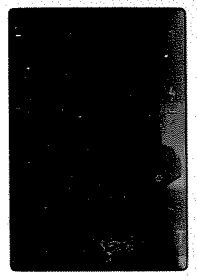
14-18
78237
MAY 1964



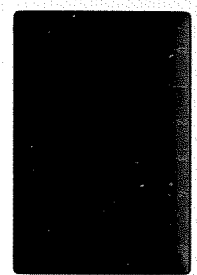
15-18
78237
MAY 1964



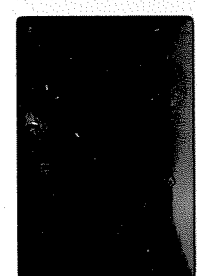
16-18
78255
MAY 1964



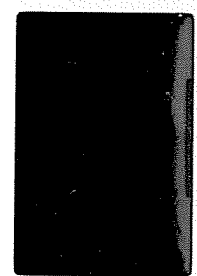
17-18
78256
MAY 1964



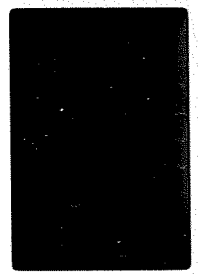
18-18
78256
MAY 1964



19-18
79035-01
MAY 1964



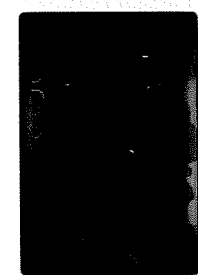
20-18
79115
MAY 1964



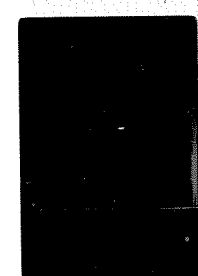
21-18
79115
MAY 1964



22-18
79115
MAY 1964



23-18
79135
MAY 1964



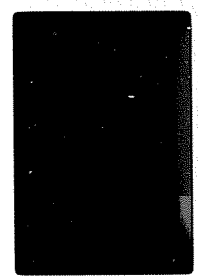
24-18
79135
MAY 1964



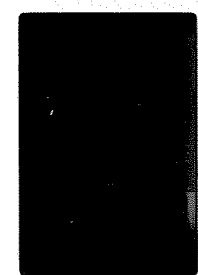
25-18
79135
MAY 1964



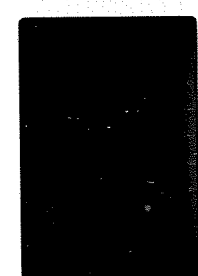
26-18
79135
MAY 1964



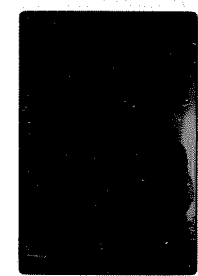
27-18
79135
MAY 1964



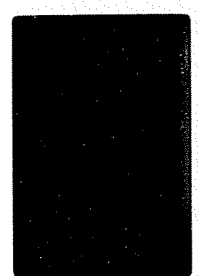
28-18
79155
MAY 1964



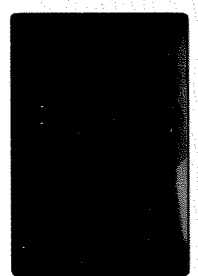
29-18
79155
MAY 1964



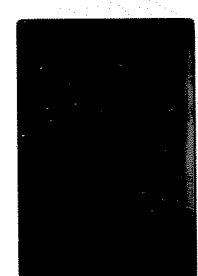
30-18
79155
MAY 1964



31-18
79155
MAY 1964



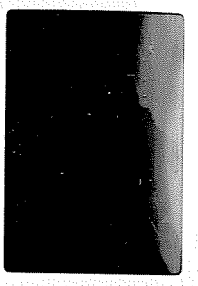
33-18
79175
MAY 1964



34-18
79175
MAY 1964



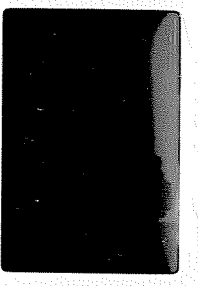
35-18
79175



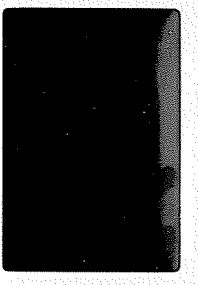
6-19
79515



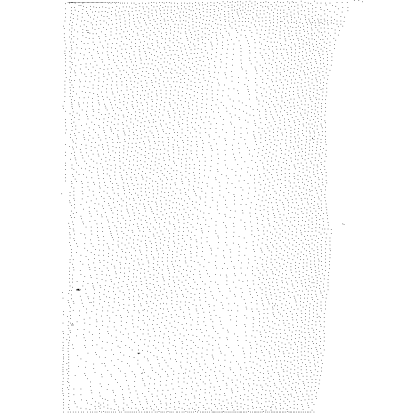
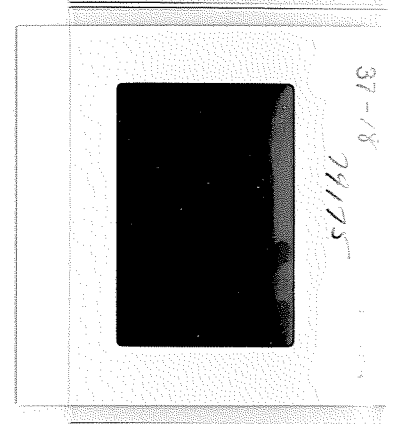
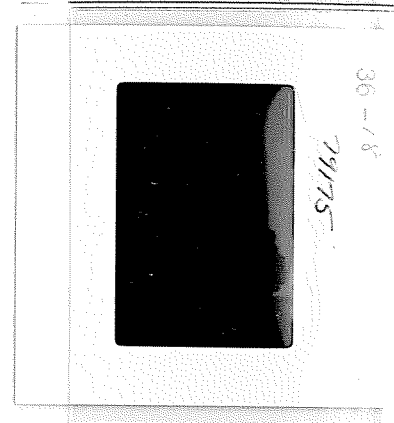
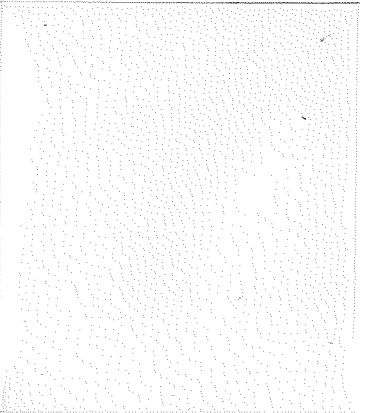
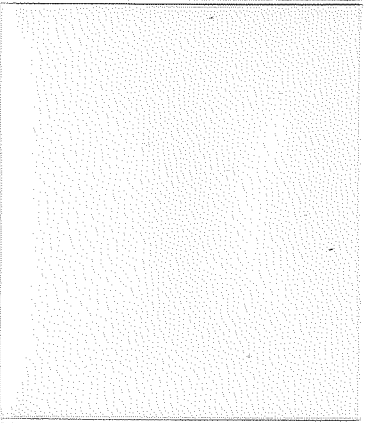
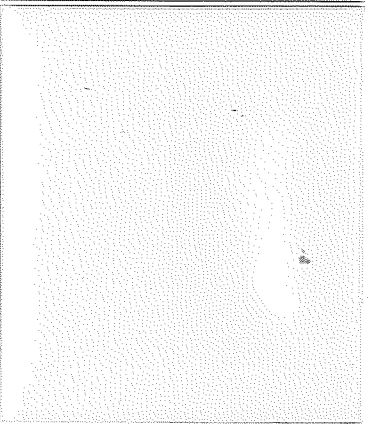
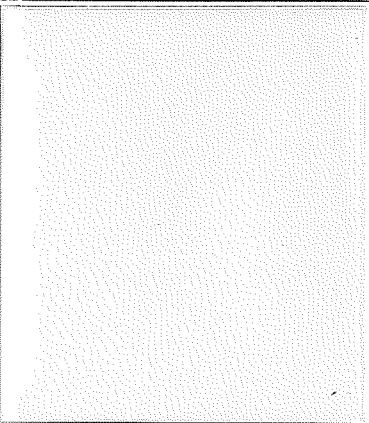
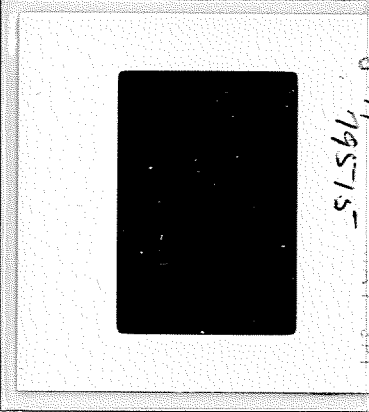
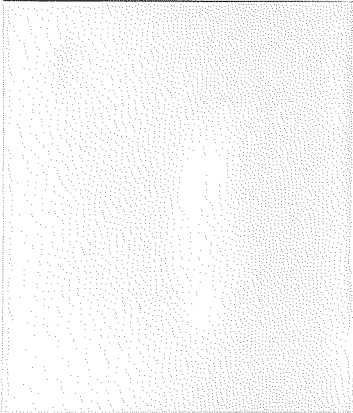
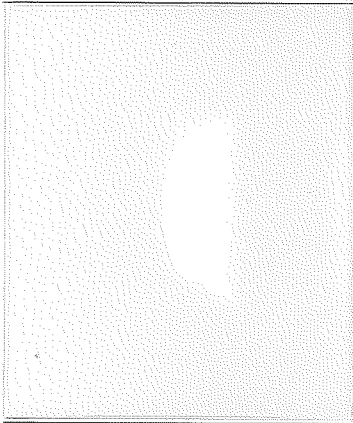
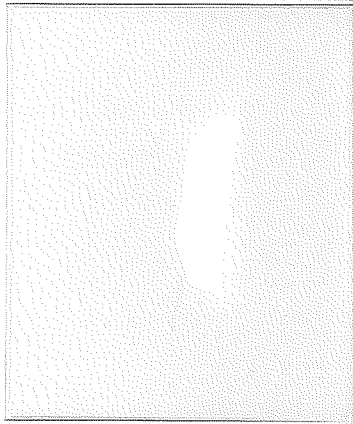
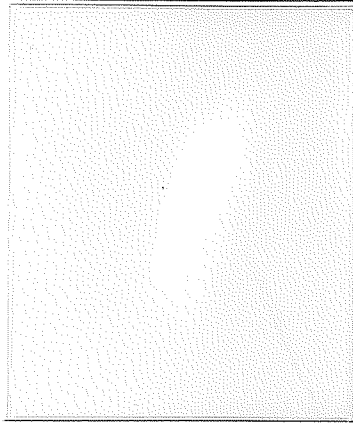
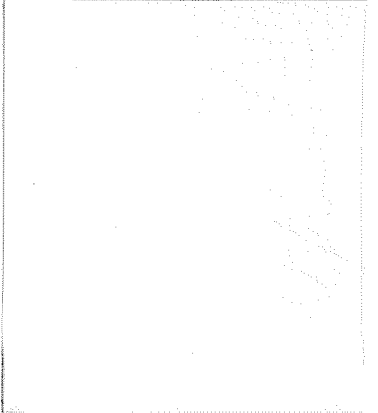
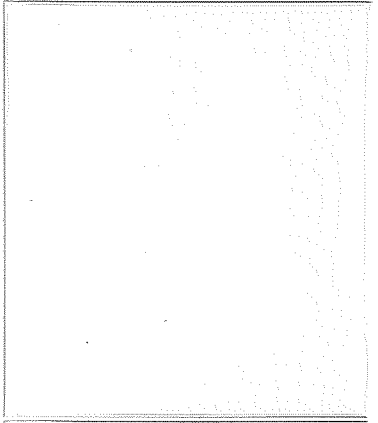
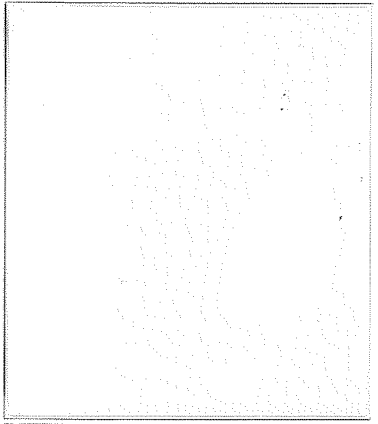
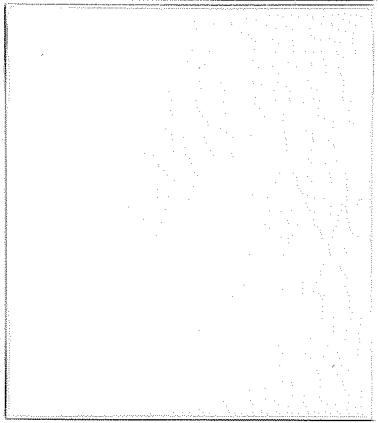
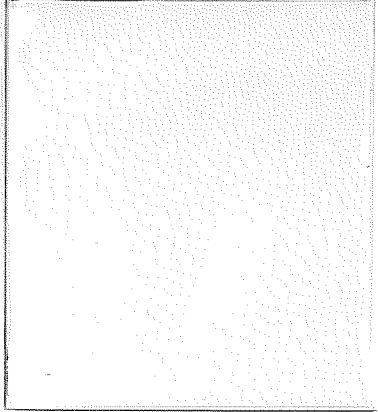
36-18
79175

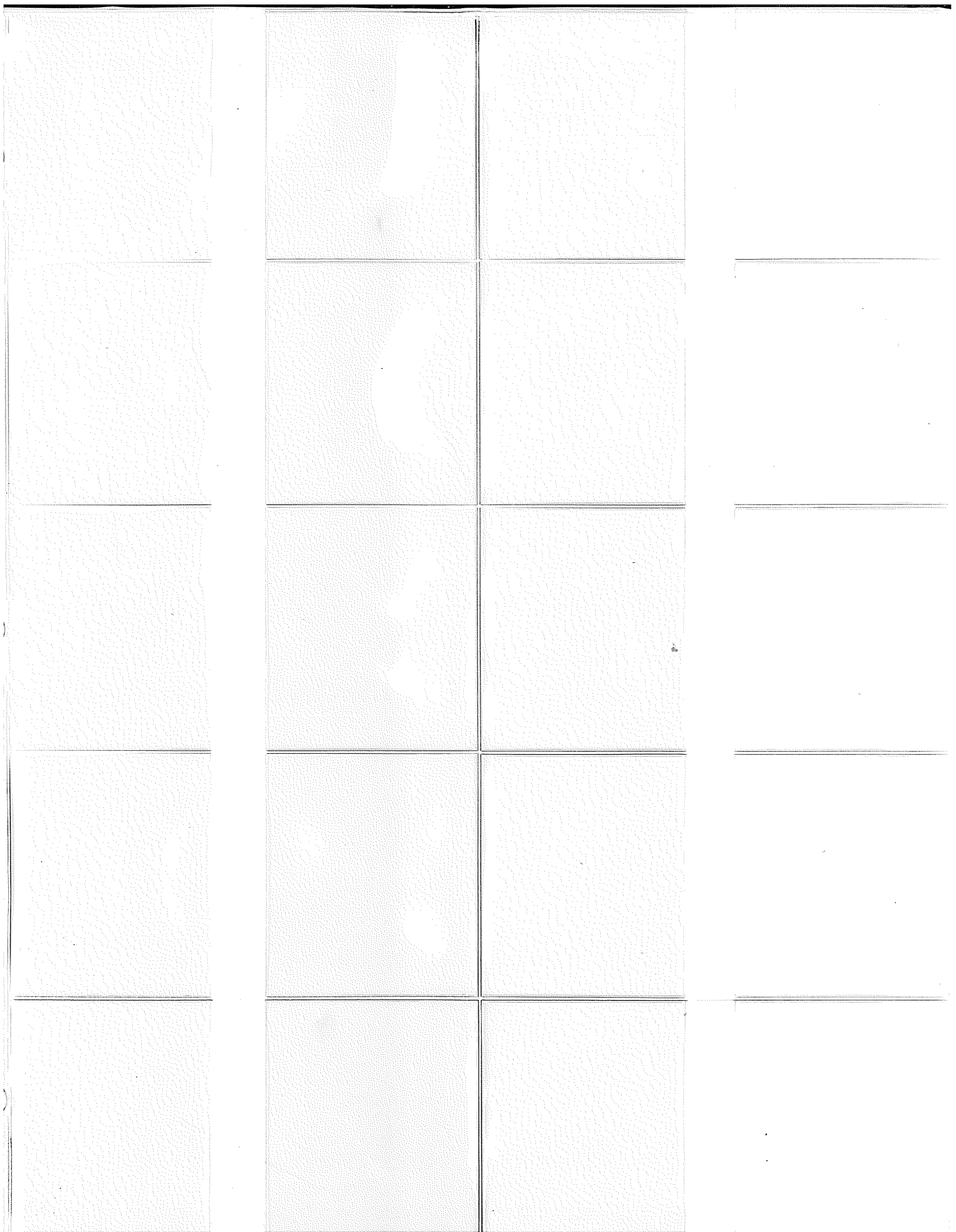


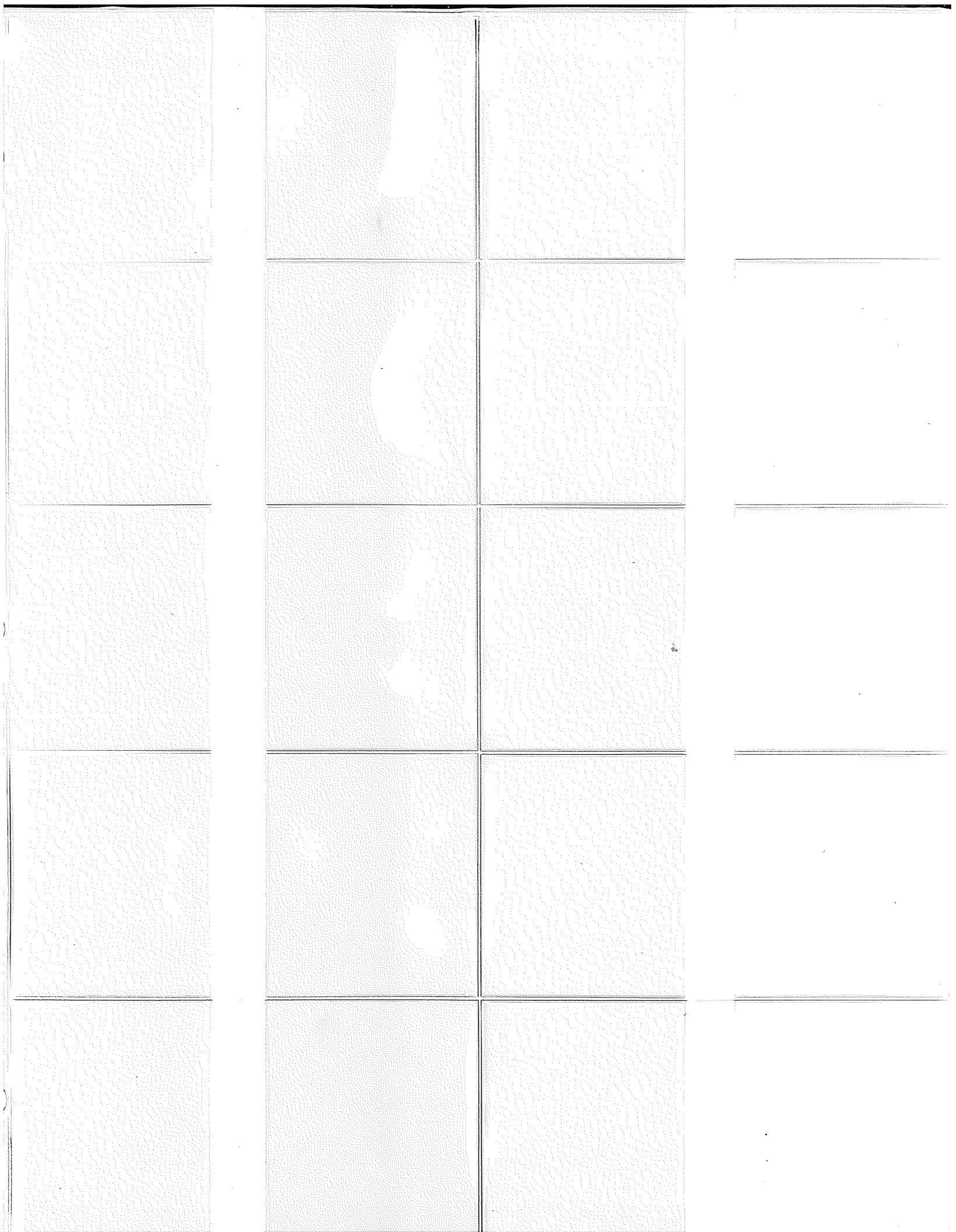
37-18
79175



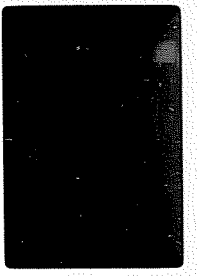
4-19
79195



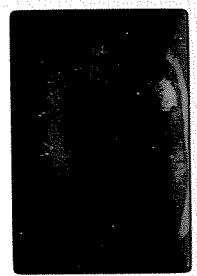




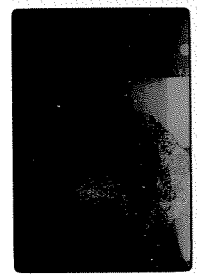
1-6
61016
APR 73PI



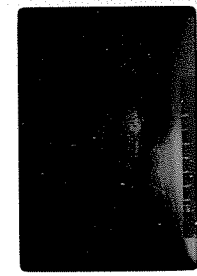
2-6
62255
APR 73PI



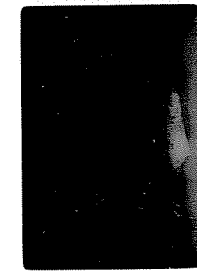
3-6
62255
APR 73PI



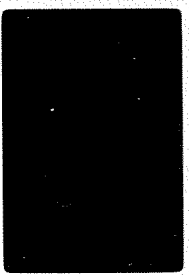
4-6
62255
APR 73PI



5-6
62275
APR 73PI



6-6
62275
APR 73PI



7-6
64435
APR 73PI



8-6
64475
APR 73PI



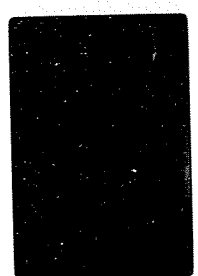
9-6
64475
APR 73PI



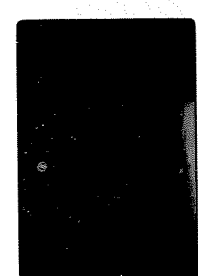
10-6
64475
APR 73PI



11-6
64475
APR 73PI



12-6
64476
APR 73PI



13-6
64475
APR 73PI



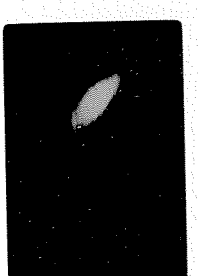
14-6
64535
APR 73PI



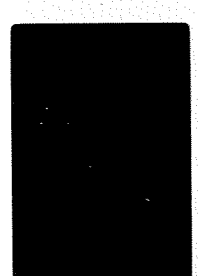
15-6
64535
APR 73PI



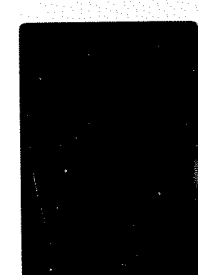
16-6
64535
APR 73PI



17-6
64536
APR 73PI



18-6
64536
APR 73PI



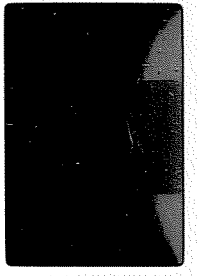
19-6
64537
APR 73PI



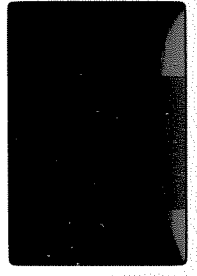
20-6
64537
APR 73PI



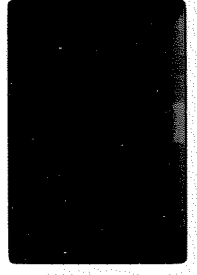
21-6
65025
APR 73PI



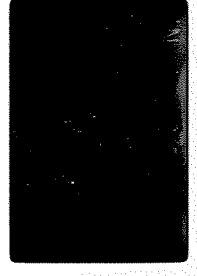
22-6
65025
APR 73PI



23-6
65075-02
APR 73PI



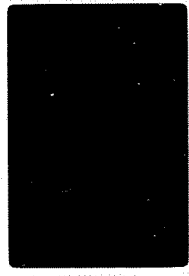
24-6
65075-02
APR 73PI



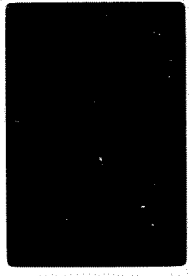
25-6
65315
APR 73PI



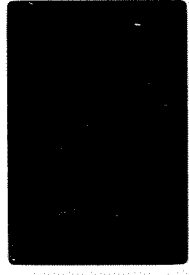
26-6
65315
APR 73PI



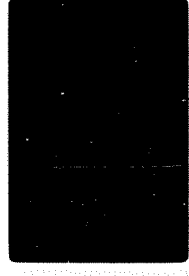
27-6
65315
APR 73PI



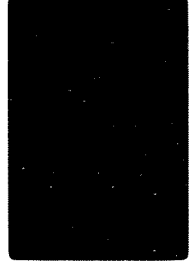
28-6
65326
APR 73PI



29-6
65326
APR 73PI



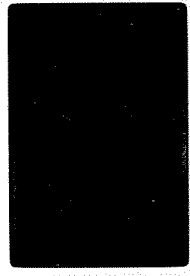
30-6
65326
APR 73PI



31-6
65326
APR 73PI



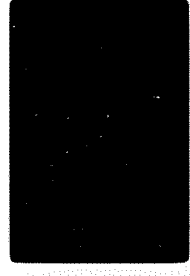
32-6
66055
APR 73PI



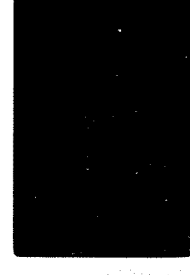
33-6
66055
APR 73PI



34-6
66055
APR 73PI



35-6
66055
APR 73PI



2

