

7003514 polycrylic



SEAL EDGE WITH WARM IRON.
DO NOT TOUCH FILM.
MADE IN U.S.A.

7003514 Mesostasis rich area w/ Alkalite



SEAL EDGE WITH WARM IRON.
DO NOT TOUCH FILM.
MADE IN U.S.A.

7003514 Fine granular



SEAL EDGE WITH WARM IRON.
DO NOT TOUCH FILM.
MADE IN U.S.A.

701491 Typical granular above



SEAL EDGE WITH WARM IRON.
DO NOT TOUCH FILM.
MADE IN U.S.A.

7003514 heavy glassy ptx



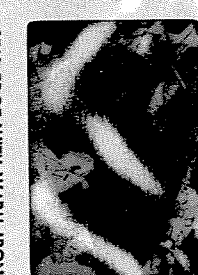
SEAL EDGE WITH WARM IRON.
DO NOT TOUCH FILM.
MADE IN U.S.A.

701491 Typical granular area



EDGE WITH WARM IRON.
DO NOT TOUCH FILM.
MADE IN U.S.A.

7003514 heavy glassy ptx



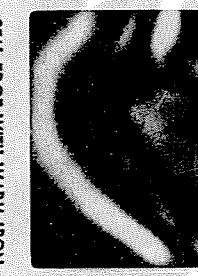
SEAL EDGE WITH WARM IRON.
DO NOT TOUCH FILM.
MADE IN U.S.A.

701491 Mesostasis rich area w/ Alkalite



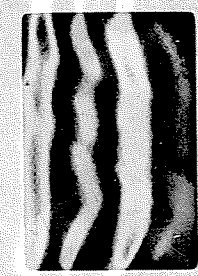
SEAL EDGE WITH WARM IRON.
DO NOT TOUCH FILM.
MADE IN U.S.A.

7003514 Mesostasis rich area w/ crystallite



SEAL EDGE WITH WARM IRON.
DO NOT TOUCH FILM.
MADE IN U.S.A.

701491 Mesostasis rich area w/ Alkalite



SEAL EDGE WITH WARM IRON.
DO NOT TOUCH FILM.
MADE IN U.S.A.

700157 Typical



EDGE WITH WARM IRON.
DO NOT TOUCH FILM.
MADE IN U.S.A.

700157 granular



SEAL EDGE WITH WARM IRON.
DO NOT TOUCH FILM.
MADE IN U.S.A.

700157 Typical



SEAL EDGE WITH WARM IRON.
DO NOT TOUCH FILM.
MADE IN U.S.A.

7013511 skeletal clay in v. fine matrix



SEAL EDGE WITH WARM IRON.
DO NOT TOUCH FILM.
MADE IN U.S.A.

700157 Fibrous intergranular



SEAL EDGE WITH WARM IRON.
DO NOT TOUCH FILM.
MADE IN U.S.A.

7013511 skeletal clay in v. fine matrix



SEAL EDGE WITH WARM IRON.
DO NOT TOUCH FILM.
MADE IN U.S.A.

700157 Fibrous intergranular



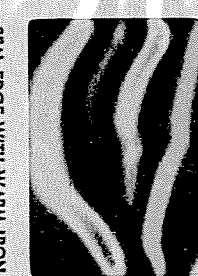
SEAL EDGE WITH WARM IRON.
DO NOT TOUCH FILM.
MADE IN U.S.A.

7013511 skeletal clay in v. fine matrix



SEAL EDGE WITH WARM IRON.
DO NOT TOUCH FILM.
MADE IN U.S.A.

700157 granular



SEAL EDGE WITH WARM IRON.
DO NOT TOUCH FILM.
MADE IN U.S.A.

7013511 coarse granular



SEAL EDGE WITH WARM IRON.
DO NOT TOUCH FILM.
MADE IN U.S.A.

72215,7 Clasts in clast

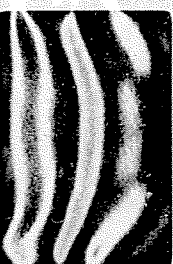
1- 3.16 - 1



SEAL EDGE WITH WARM IRON.
DO NOT TOUCH FILM.
MADE IN U.S.A.

72215,7 clast 1

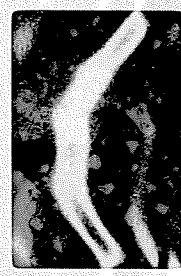
1- 0.825 - 1



SEAL EDGE WITH WARM IRON.
DO NOT TOUCH FILM.
MADE IN U.S.A.

72215,7 Clasts in clast

1- 3.16 - 1



SEAL EDGE WITH WARM IRON.
DO NOT TOUCH FILM.
MADE IN U.S.A.

72215,7 clast 2

1- 0.825 - 1



SEAL EDGE WITH WARM IRON.
DO NOT TOUCH FILM.
MADE IN U.S.A.

72215,7 Matrix of dark area

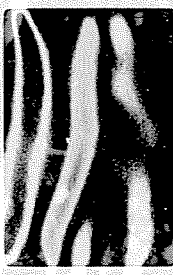
1- 0.825 - 1



SEAL EDGE WITH WARM IRON.
DO NOT TOUCH FILM.
MADE IN U.S.A.

72215,7 clast 3

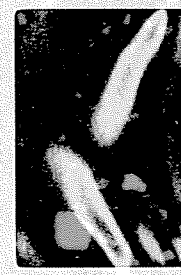
1- 0.825 - 1



SEAL EDGE WITH WARM IRON.
DO NOT TOUCH FILM.
MADE IN U.S.A.

72215,7 Matrix of dark area

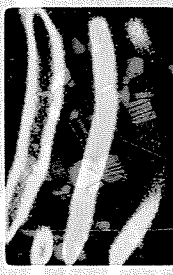
1- 0.825 - 1



SEAL EDGE WITH WARM IRON.
DO NOT TOUCH FILM.
MADE IN U.S.A.

72215,7 clast 3

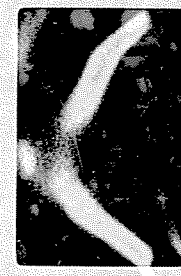
1- 0.825 - 1



SEAL EDGE WITH WARM IRON.
DO NOT TOUCH FILM.
MADE IN U.S.A.

72215,7 clast 1

1- 0.825 - 1



SEAL EDGE WITH WARM IRON.
DO NOT TOUCH FILM.
MADE IN U.S.A.

72215,7 clast 3

1- 0.825 - 1



SEAL EDGE WITH WARM IRON.
DO NOT TOUCH FILM.
MADE IN U.S.A.

72215,7 clast 4

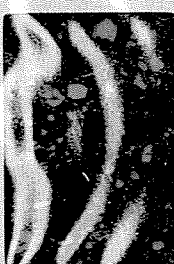
1- 0.825 - 1



SEAL EDGE WITH WARM IRON.
DO NOT TOUCH FILM.
MADE IN U.S.A.

72215,7 Typical of 1/2 of slide

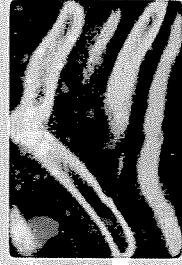
1- 3.16 - 1



SEAL EDGE WITH WARM IRON.
DO NOT TOUCH FILM.
MADE IN U.S.A.

72215,7 banded area

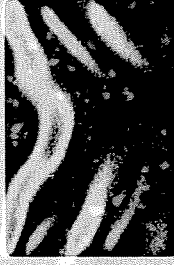
1- 3.16 - 1



SEAL EDGE WITH WARM IRON.
DO NOT TOUCH FILM.
MADE IN U.S.A.

72215,7 Typical of 3rd 1/2 of slide

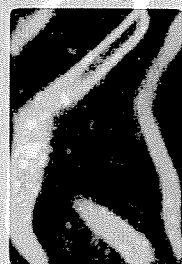
1- 3.16 - 1



SEAL EDGE WITH WARM IRON.
DO NOT TOUCH FILM.
MADE IN U.S.A.

72215,7 banded area

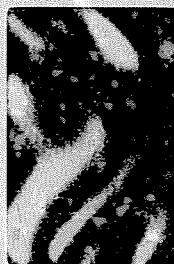
1- 3.16 - 1



SEAL EDGE WITH WARM IRON.
DO NOT TOUCH FILM.
MADE IN U.S.A.

72215,7 Typical of 2nd 1/2 of slide

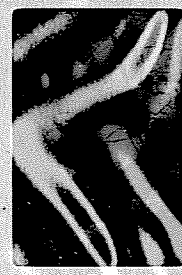
1- 3.16 - 1



SEAL EDGE WITH WARM IRON.
DO NOT TOUCH FILM.
MADE IN U.S.A.

72215,7 clast of exsolved lamellae of 1/2 of film

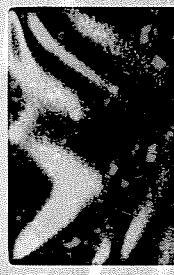
1- 3.16 - 1



SEAL EDGE WITH WARM IRON.
DO NOT TOUCH FILM.
MADE IN U.S.A.

72215,7 Typical of 1/2 of slide

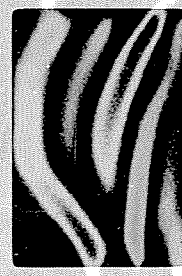
1- 3.16 - 1



SEAL EDGE WITH WARM IRON.
DO NOT TOUCH FILM.
MADE IN U.S.A.

72215,7 clast of exsolved lamellae of 1/2 of film

1- 0.825 - 1



SEAL EDGE WITH WARM IRON.
DO NOT TOUCH FILM.
MADE IN U.S.A.

72215,7 clast 1

1- 0.825 - 1

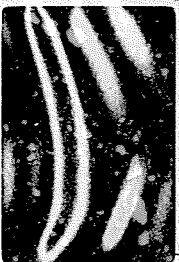


SEAL EDGE WITH WARM IRON.
DO NOT TOUCH FILM.
MADE IN U.S.A.



SEAL EDGE WITH WARM IRON,
DO NOT TOUCH FILM.
MADE IN U.S.A.

72257 Clast
0.825 mm



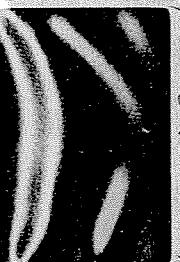
SEAL EDGE WITH WARM IRON,
DO NOT TOUCH FILM.
MADE IN U.S.A.

72257 Typical
3.16 mm



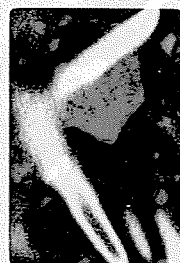
SEAL EDGE WITH WARM IRON,
DO NOT TOUCH FILM.
MADE IN U.S.A.

72275, 12 Finned clasts



SEAL EDGE WITH WARM IRON,
DO NOT TOUCH FILM.
MADE IN U.S.A.

72315, 7 clast



SEAL EDGE WITH WARM IRON,
DO NOT TOUCH FILM.
MADE IN U.S.A.

72257 clast
0.825 mm



SEAL EDGE WITH WARM IRON,
DO NOT TOUCH FILM.
MADE IN U.S.A.

72257 clast 1
0.825 mm



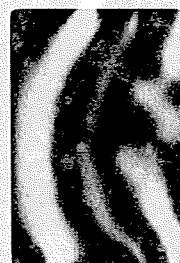
SEAL EDGE WITH WARM IRON,
DO NOT TOUCH FILM.
MADE IN U.S.A.

72315, 7 Typical matrix



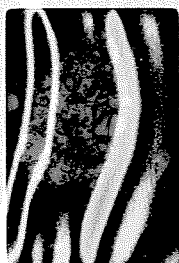
SEAL EDGE WITH WARM IRON,
DO NOT TOUCH FILM.
MADE IN U.S.A.

72354 Typical
3.16 mm



SEAL EDGE WITH WARM IRON,
DO NOT TOUCH FILM.
MADE IN U.S.A.

72257 polifilite
clast
0.825 mm



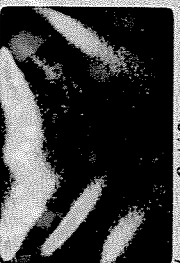
SEAL EDGE WITH WARM IRON,
DO NOT TOUCH FILM.
MADE IN U.S.A.

72275, 11 clast 1
0.825 mm



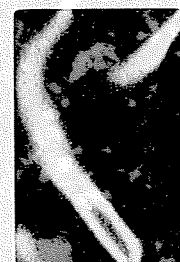
SEAL EDGE WITH WARM IRON,
DO NOT TOUCH FILM.
MADE IN U.S.A.

72315, 7 Typical matrix



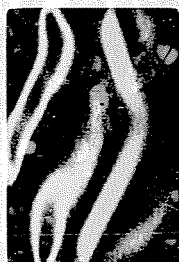
SEAL EDGE WITH WARM IRON,
DO NOT TOUCH FILM.
MADE IN U.S.A.

72354 Typical
3.16 mm



SEAL EDGE WITH WARM IRON,
DO NOT TOUCH FILM.
MADE IN U.S.A.

72257 polifilite
clast
0.825 mm



SEAL EDGE WITH WARM IRON,
DO NOT TOUCH FILM.
MADE IN U.S.A.

72275, 11 clast 2
0.825 mm



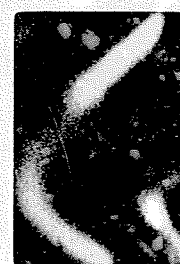
SEAL EDGE WITH WARM IRON,
DO NOT TOUCH FILM.
MADE IN U.S.A.

72315, 7 Typical matrix



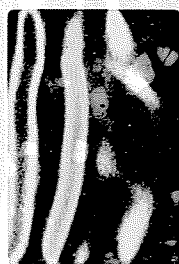
SEAL EDGE WITH WARM IRON,
DO NOT TOUCH FILM.
MADE IN U.S.A.

72354 Typical
0.825 mm



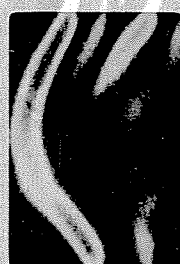
SEAL EDGE WITH WARM IRON,
DO NOT TOUCH FILM.
MADE IN U.S.A.

72275, 11 Typical
3.16 mm



SEAL EDGE WITH WARM IRON,
DO NOT TOUCH FILM.
MADE IN U.S.A.

72275, 11 clast 2
0.825 mm



SEAL EDGE WITH WARM IRON,
DO NOT TOUCH FILM.
MADE IN U.S.A.

72315, 7 clast



SEAL EDGE WITH WARM IRON,
DO NOT TOUCH FILM.
MADE IN U.S.A.

72354 Typical
0.825 mm

72355,4 Class 1

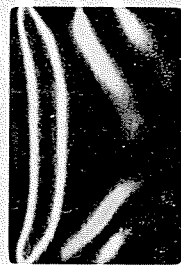
3.16um — 1



SEAL EDGE WITH WARM IRON.
DO NOT TOUCH FILM.
MADE IN U.S.A.

72355,4 Class 3

0.825 — 1



SEAL EDGE WITH WARM IRON.
DO NOT TOUCH FILM.
MADE IN U.S.A.

72355,4 Class 1

3.16 — 1



SEAL EDGE WITH WARM IRON.
DO NOT TOUCH FILM.
MADE IN U.S.A.

72415,12 Typical

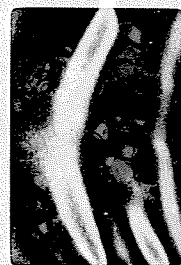
3.16 — 1



(76c) SEAL EDGE WITH WARM IRON.
DO NOT TOUCH FILM.
MADE IN U.S.A.

72355,4 Class 2

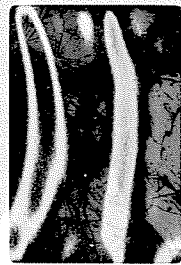
0.825 — 1



SEAL EDGE WITH WARM IRON.
DO NOT TOUCH FILM.
MADE IN U.S.A.

72415,12 Intergrain area

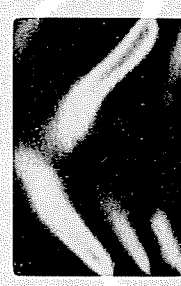
0.825 — 1



SEAL EDGE WITH WARM IRON.
DO NOT TOUCH FILM.
MADE IN U.S.A.

72355,4 Class 2

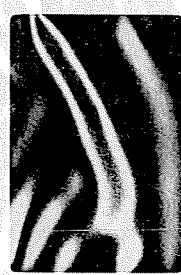
0.825 — 1



SEAL EDGE WITH WARM IRON.
DO NOT TOUCH FILM.
MADE IN U.S.A.

72415,12 Intergrain area

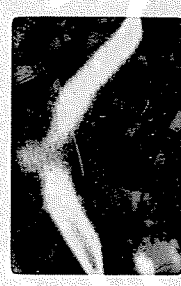
0.825 — 1



SEAL EDGE WITH WARM IRON.
DO NOT TOUCH FILM.
MADE IN U.S.A.

72355,4 Class 3

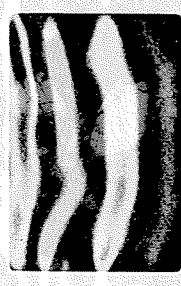
0.825 — 1



SEAL EDGE WITH WARM IRON.
DO NOT TOUCH FILM.
MADE IN U.S.A.

72415,12 Typical

3.16 — 1



(76c) SEAL EDGE WITH WARM IRON.
DO NOT TOUCH FILM.
MADE IN U.S.A.

72435,7 Class 1 (19c)

0.825 — 1



SEAL EDGE WITH WARM IRON.
DO NOT TOUCH FILM.
MADE IN U.S.A. 15846L

72435,7 Shaded Class

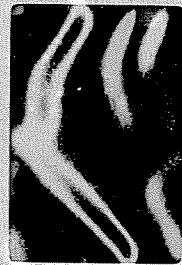
0.825 — 1



SEAL EDGE WITH WARM IRON.
DO NOT TOUCH FILM.
MADE IN U.S.A.

72435,7 Class

0.825 — 1



SEAL EDGE WITH WARM IRON.
DO NOT TOUCH FILM.
MADE IN U.S.A.

72435,7 Typical area

3.16um — 1



SEAL EDGE WITH WARM IRON.
DO NOT TOUCH FILM.
MADE IN U.S.A.

72435,7 Class

0.825 — 1



SEAL EDGE WITH WARM IRON.
DO NOT TOUCH FILM.
MADE IN U.S.A.

72435,7 Typical

3.16um — 1



SEAL EDGE WITH WARM IRON.
DO NOT TOUCH FILM.
MADE IN U.S.A.

72435,7 Class 2/med

0.825 — 1



SEAL EDGE WITH WARM IRON.
DO NOT TOUCH FILM.
MADE IN U.S.A.

72435,7 Typical area

0.825 — 1



(76d) SEAL EDGE WITH WARM IRON.
DO NOT TOUCH FILM.
MADE IN U.S.A.

72435,7 V.S.U. IN EDGE

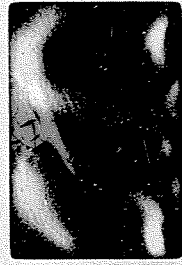
0.825 — 1



Shaded Class

72135/11 Skeletal divine

1-0.825-1



SEAL EDGE WITH WARM IRON.
DO NOT TOUCH FILM.
MADE IN U.S.A.

73215/7 Matrix w/ dark clasts

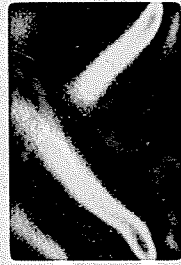
1-3.16mm-1



SEAL EDGE WITH WARM IRON.
DO NOT TOUCH FILM.
MADE IN U.S.A.

72135/11 ~~Matrix~~ Skeletal

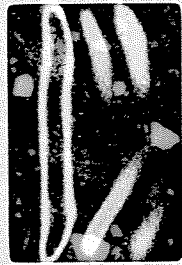
1-0.825-1



SEAL EDGE WITH WARM IRON.
DO NOT TOUCH FILM.
MADE IN U.S.A.

73215/7 Dark clasts containing clasts

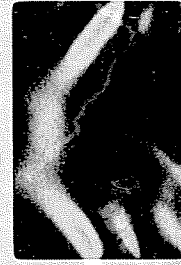
1-3.16mm-1



SEAL EDGE WITH WARM IRON.
DO NOT TOUCH FILM.
MADE IN U.S.A.

72135/11 Rusty area

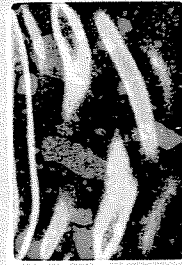
1-0.825-1



SEAL EDGE WITH WARM IRON.
DO NOT TOUCH FILM.
MADE IN U.S.A.

73215/7 Dark clasts containing many clasts

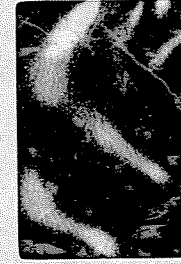
1-3.16mm-1



SEAL EDGE WITH WARM IRON.
DO NOT TOUCH FILM.
MADE IN U.S.A.

72135/11 Skeletal divine w/ div. matrix

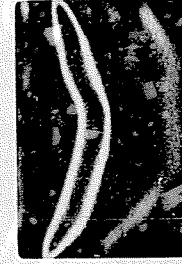
1-3.16mm-1



SEAL EDGE WITH WARM IRON.
DO NOT TOUCH FILM.
MADE IN U.S.A.

73215/7 Dark clast containing clasts w/ clasts

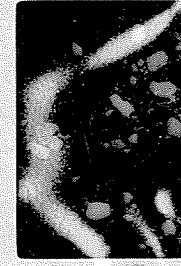
1-3.16mm-1



SEAL EDGE WITH WARM IRON.
DO NOT TOUCH FILM.
MADE IN U.S.A.

73215/7 Matrix w/ dark clasts

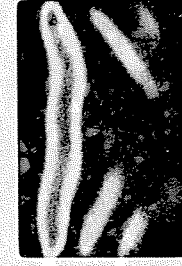
1-3.16mm-1



SEAL EDGE WITH WARM IRON.
DO NOT TOUCH FILM.
MADE IN U.S.A.

73215/7 Dark clast containing clast w/ clasts

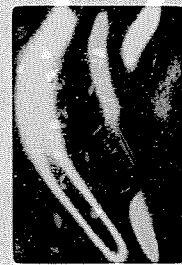
1-3.16mm-1



SEAL EDGE WITH WARM IRON.
DO NOT TOUCH FILM.
MADE IN U.S.A.

73215/7 clasts of contact of gray clasts and matrix

1-0.825-1



SEAL EDGE WITH WARM IRON.
DO NOT TOUCH FILM.
MADE IN U.S.A.

73235/7 Typical matrix

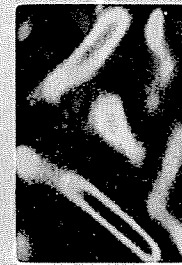
1-0.825-1



SEAL EDGE WITH WARM IRON.
DO NOT TOUCH FILM.
MADE IN U.S.A.

73215/7 clasts of contact of gray clasts and matrix

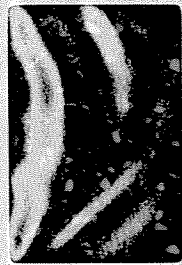
1-0.825-1



SEAL EDGE WITH WARM IRON.
DO NOT TOUCH FILM.
MADE IN U.S.A.

73235/7 light colored vein

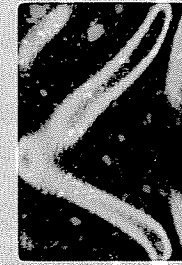
1-3.16mm-1



SEAL EDGE WITH WARM IRON.
DO NOT TOUCH FILM.
MADE IN U.S.A.

73235/7 Typical matrix

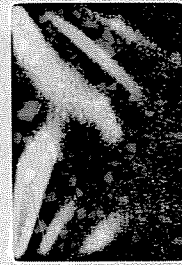
1-3.16mm-1



SEAL EDGE WITH WARM IRON.
DO NOT TOUCH FILM.
MADE IN U.S.A.

73235/7 light colored vein

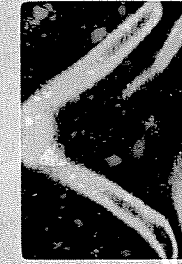
1-3.16mm-1



SEAL EDGE WITH WARM IRON.
DO NOT TOUCH FILM.
MADE IN U.S.A.

73235/7 Typical matrix

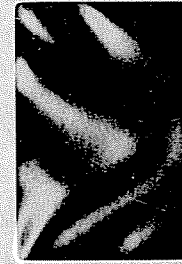
1-3.16mm-1



SEAL EDGE WITH WARM IRON.
DO NOT TOUCH FILM.
MADE IN U.S.A.

73235/7 clast 1

1-0.825-1



SEAL EDGE WITH WARM IRON.
DO NOT TOUCH FILM.
MADE IN U.S.A.

73235/7 Typical matrix

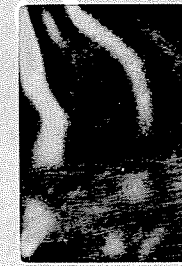
1-0.825-1



SEAL EDGE WITH WARM IRON.
DO NOT TOUCH FILM.
MADE IN U.S.A.

73235/7 clast 2

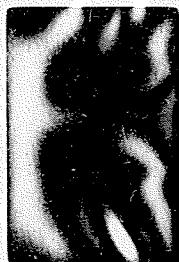
1-0.825-1



SEAL EDGE WITH WARM IRON.
DO NOT TOUCH FILM.
MADE IN U.S.A.

732357 clast 2

1 — 0.825 — 1



SEAL EDGE WITH WARM IRON.
DO NOT TOUCH FILM.
MADE IN U.S.A.

732557 clasts

1 — 3.16mm — 1



SEAL EDGE WITH WARM IRON.
DO NOT TOUCH FILM.
MADE IN U.S.A.

732557 clasts

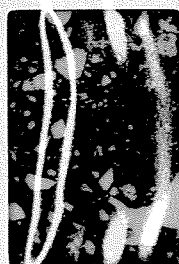
1 — 2.08 — 1



SEAL EDGE WITH WARM IRON.
DO NOT TOUCH FILM.
MADE IN U.S.A.

732557 clasts

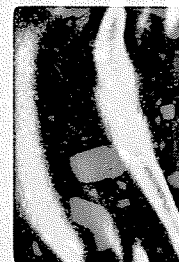
1 — 3.16mm — 1



SEAL EDGE WITH WARM IRON.
DO NOT TOUCH FILM.
MADE IN U.S.A.

732357 clasts

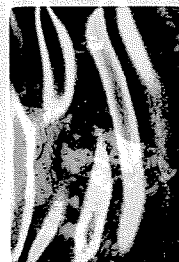
1 — 2.08mm — 1



SEAL EDGE WITH WARM IRON.
DO NOT TOUCH FILM.
MADE IN U.S.A.

732557 common clast
Type

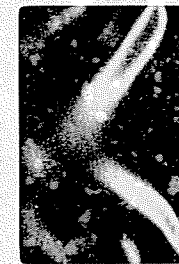
1 — 0.825mm — 1



SEAL EDGE WITH WARM IRON.
DO NOT TOUCH FILM.
MADE IN U.S.A.

732557 Typical area

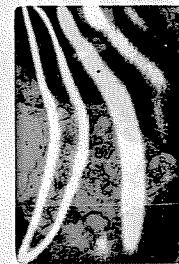
1 — 3.16mm — 1



SEAL EDGE WITH WARM IRON.
DO NOT TOUCH FILM.
MADE IN U.S.A.

732557 common clast
Type

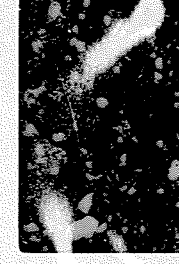
1 — 0.825mm — 1



SEAL EDGE WITH WARM IRON.
DO NOT TOUCH FILM.
MADE IN U.S.A.

732557 Typical area

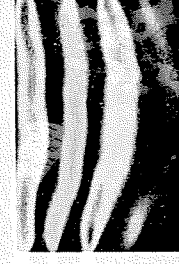
1 — 3.16mm — 1



SEAL EDGE WITH WARM IRON.
DO NOT TOUCH FILM.
MADE IN U.S.A.

7422078 orange sphares
+ oil

1 — 0.825 — 1



SEAL EDGE WITH WARM IRON.
DO NOT TOUCH FILM.
MADE IN U.S.A.

7412078 orange sphares
+ oil

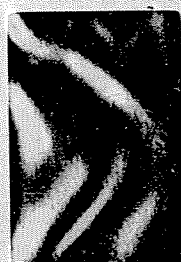
1 — 0.825 — 1



SEAL EDGE WITH WARM IRON.
DO NOT TOUCH FILM.
MADE IN U.S.A.

7423511 Typical

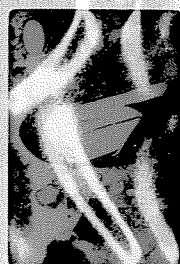
1 — 0.825 — 1



SEAL EDGE WITH WARM IRON.
DO NOT TOUCH FILM.
MADE IN U.S.A.

7422077 Xenocryst in
black acid

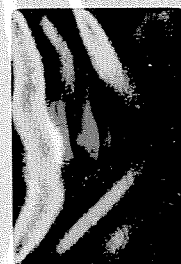
1 — 0.825 — 1



SEAL EDGE WITH WARM IRON.
DO NOT TOUCH FILM.
MADE IN U.S.A.

7423511 Typical

1 — 0.825 — 1



SEAL EDGE WITH WARM IRON.
DO NOT TOUCH FILM.
MADE IN U.S.A.

7422071 Xenocryst in
orange acid

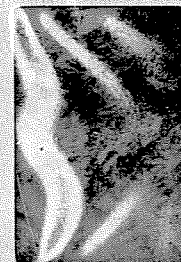
1 — 0.825 — 1



SEAL EDGE WITH WARM IRON.
DO NOT TOUCH FILM.
MADE IN U.S.A.

7423511 dark area
(A13)

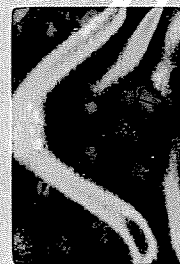
1 — 0.825 — 1



SEAL EDGE WITH WARM IRON.
DO NOT TOUCH FILM.
MADE IN U.S.A.

7423511 Typical

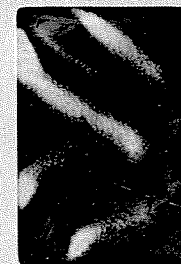
1 — 3.16 — 1



SEAL EDGE WITH WARM IRON.
DO NOT TOUCH FILM.
MADE IN U.S.A.

7423511 dark area

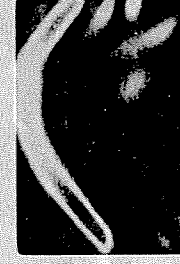
1 — 0.825 — 1



SEAL EDGE WITH WARM IRON.
DO NOT TOUCH FILM.
MADE IN U.S.A.

7423511 Typical area

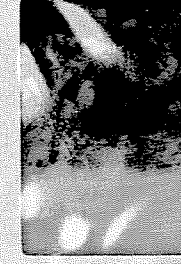
1 — 3.16 — 1



SEAL EDGE WITH WARM IRON.
DO NOT TOUCH FILM.
MADE IN U.S.A.

742557 Typical area

1 — 3.16mm — 1



SEAL EDGE WITH WARM IRON.
DO NOT TOUCH FILM.
MADE IN U.S.A. / SSCHL

760159 class 3



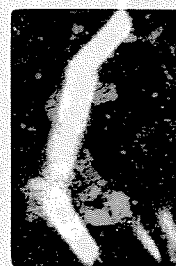
SEAL EDGE WITH WARM IRON.
DO NOT TOUCH FILM.
MADE IN U.S.A.

760159 class 3



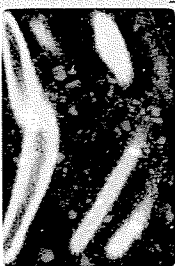
SEAL EDGE WITH WARM IRON.
DO NOT TOUCH FILM.
MADE IN U.S.A.

760159 class 3



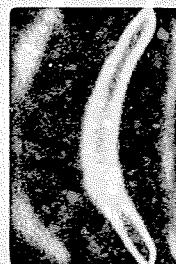
SEAL EDGE WITH WARM IRON.
DO NOT TOUCH FILM.
MADE IN U.S.A.

760159 d/ke like area



SEAL EDGE WITH WARM IRON.
DO NOT TOUCH FILM.
MADE IN U.S.A.

760159 typical perforation



SEAL EDGE WITH WARM IRON.
DO NOT TOUCH FILM.
MADE IN U.S.A.

760159 d/ke like area



SEAL EDGE WITH WARM IRON.
DO NOT TOUCH FILM.
MADE IN U.S.A.

760159 area typical perforation



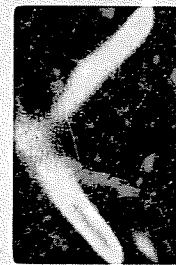
SEAL EDGE WITH WARM IRON.
DO NOT TOUCH FILM.
MADE IN U.S.A.

760159 class 2



SEAL EDGE WITH WARM IRON.
DO NOT TOUCH FILM.
MADE IN U.S.A.

760159 class 1



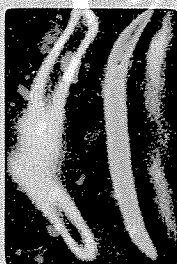
SEAL EDGE WITH WARM IRON.
DO NOT TOUCH FILM.
MADE IN U.S.A.

760159 class 2



SEAL EDGE WITH WARM IRON.
DO NOT TOUCH FILM.
MADE IN U.S.A.

7605511 Planar visible area



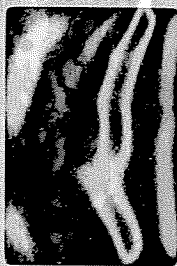
SEAL EDGE WITH WARM IRON.
DO NOT TOUCH FILM.
MADE IN U.S.A.

7605511 perforation



SEAL EDGE WITH WARM IRON.
DO NOT TOUCH FILM.
MADE IN U.S.A.

7605511 Planar visible area



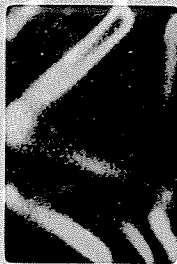
SEAL EDGE WITH WARM IRON.
DO NOT TOUCH FILM.
MADE IN U.S.A.

7605511 perforation



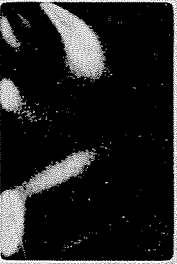
SEAL EDGE WITH WARM IRON.
DO NOT TOUCH FILM.
MADE IN U.S.A.

7605511 contact



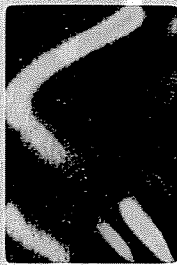
SEAL EDGE WITH WARM IRON.
DO NOT TOUCH FILM.
MADE IN U.S.A.

7605511 perforation



SEAL EDGE WITH WARM IRON.
DO NOT TOUCH FILM.
MADE IN U.S.A.

7605511 contact



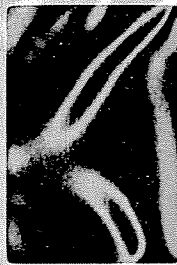
SEAL EDGE WITH WARM IRON.
DO NOT TOUCH FILM.
MADE IN U.S.A.

7605511 inclusions in poly cast + perforation



SEAL EDGE WITH WARM IRON.
DO NOT TOUCH FILM.
MADE IN U.S.A.

7605511 perforation



SEAL EDGE WITH WARM IRON.
DO NOT TOUCH FILM.
MADE IN U.S.A.

7605511 inclusions in poly cast + perforation



SEAL EDGE WITH WARM IRON.
DO NOT TOUCH FILM.
MADE IN U.S.A.

7605,11 Oliv. clast

1-3.16-1



SEAL EDGE WITH WARM IRON.
DO NOT TOUCH FILM.
MADE IN U.S.A.

76136,7 Typical

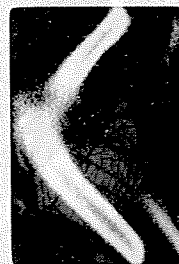
1-3.16-1



SEAL EDGE WITH WARM IRON.
DO NOT TOUCH FILM.
MADE IN U.S.A.

7605,11 Oliv. clast

1-3.16-1



SEAL EDGE WITH WARM IRON.
DO NOT TOUCH FILM.
MADE IN U.S.A.

76136,7 plumea (varieties)
Texture

1-0.825-1



SEAL EDGE WITH WARM IRON.
DO NOT TOUCH FILM.
MADE IN U.S.A.

7605,11 clasts

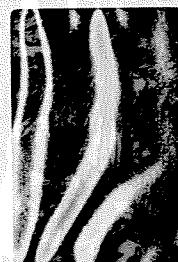
1-2.08-1



SEAL EDGE WITH WARM IRON.
DO NOT TOUCH FILM.
MADE IN U.S.A.

76136,7 plumea (varieties)
Texture

1-0.825-1



SEAL EDGE WITH WARM IRON.
DO NOT TOUCH FILM.
MADE IN U.S.A.

7605,11 clasts

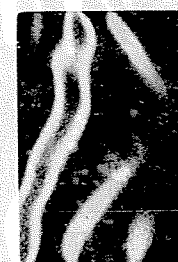
1-2.00-1



SEAL EDGE WITH WARM IRON.
DO NOT TOUCH FILM.
MADE IN U.S.A.

76215,7 Typical poik.
Texture

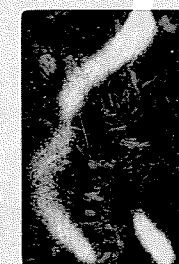
1-3.16-1



SEAL EDGE WITH WARM IRON.
DO NOT TOUCH FILM.
MADE IN U.S.A.

76136,7 Typical poik

1-3.16-1



SEAL EDGE WITH WARM IRON.
DO NOT TOUCH FILM.
MADE IN U.S.A.

76215,7 Typical poik
Texture

1-3.16-1



SEAL EDGE WITH WARM IRON.
DO NOT TOUCH FILM.
MADE IN U.S.A.

76215,7 Typical area (poik)

1-0.825-1



SEAL EDGE WITH WARM IRON.
DO NOT TOUCH FILM.
MADE IN U.S.A.

76230,11 Typical area

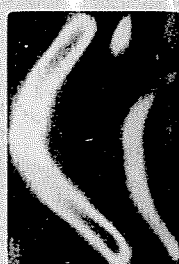
1-0.825-1



SEAL EDGE WITH WARM IRON.
DO NOT TOUCH FILM.
MADE IN U.S.A.

76215,7 Typical area (poik)

1-0.825-1



SEAL EDGE WITH WARM IRON.
DO NOT TOUCH FILM.
MADE IN U.S.A.

76230,11 Typical area

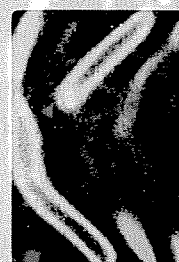
1-0.825-1



SEAL EDGE WITH WARM IRON.
DO NOT TOUCH FILM.
MADE IN U.S.A.

76215,7 Hypsthene clearest

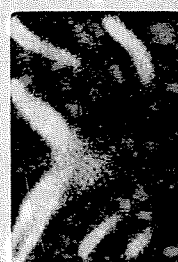
1-0.825-1



SEAL EDGE WITH WARM IRON.
DO NOT TOUCH FILM.
MADE IN U.S.A.

76230,11 Typical area

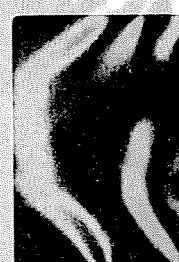
1-3.16-1



SEAL EDGE WITH WARM IRON.
DO NOT TOUCH FILM.
MADE IN U.S.A.

76230,11 large Plag crushed

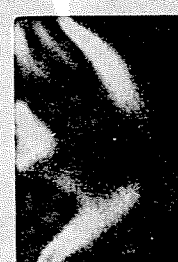
1-3.16-1



SEAL EDGE WITH WARM IRON.
DO NOT TOUCH FILM.
MADE IN U.S.A.

76230,11 Typical area

1-3.16-1



SEAL EDGE WITH WARM IRON.
DO NOT TOUCH FILM.
MADE IN U.S.A.

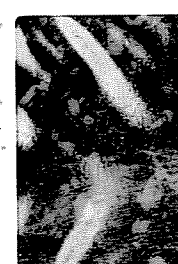
76230,11 large Plag crushed

1-3.16-1



SEAL EDGE WITH WARM IRON.
DO NOT TOUCH FILM.
MADE IN U.S.A.

S. 73. 19988
79135,12



SEAL EDGE WITH WARM IRON.
DO NOT TOUCH FILM.
MADE IN U.S.A.

742557 Typical area of contact PPA



SEAL EDGE WITH WARM IRON.
DO NOT TOUCH FILM.
MADE IN U.S.A.

742557 Typical area of contact PPA



SEAL EDGE WITH WARM IRON.
DO NOT TOUCH FILM.
MADE IN U.S.A.

742557 Mesofusis rich area



SEAL EDGE WITH WARM IRON.
DO NOT TOUCH FILM.
MADE IN U.S.A.

7701711 Glassy ring w/ inclusions



SEAL EDGE WITH WARM IRON.
DO NOT TOUCH FILM.
MADE IN U.S.A.

742557 Mesofusis - rich area



SEAL EDGE WITH WARM IRON.
DO NOT TOUCH FILM.
MADE IN U.S.A.

7701711 Glassy ring w/ inclusions



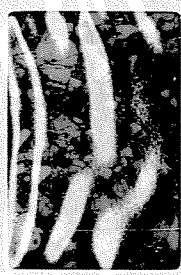
SEAL EDGE WITH WARM IRON.
DO NOT TOUCH FILM.
MADE IN U.S.A.

742557 16925



SEAL EDGE WITH WARM IRON.
DO NOT TOUCH FILM.
MADE IN U.S.A.

7701711 Part ring into rock



SEAL EDGE WITH WARM IRON.
DO NOT TOUCH FILM.
MADE IN U.S.A.

742557 Typical area



SEAL EDGE WITH WARM IRON.
DO NOT TOUCH FILM.
MADE IN U.S.A.

7701711 Part ring into rock



SEAL EDGE WITH WARM IRON.
DO NOT TOUCH FILM.
MADE IN U.S.A.

7701711 Very little crushing original Tortu



SEAL EDGE WITH WARM IRON.
DO NOT TOUCH FILM.
MADE IN U.S.A.

7707511 contact w/ dikes - reason for this



SEAL EDGE WITH WARM IRON.
DO NOT TOUCH FILM.
MADE IN U.S.A.

7701711 Very little crushing original Tortu



SEAL EDGE WITH WARM IRON.
DO NOT TOUCH FILM.
MADE IN U.S.A.

7707511 dikes & clasts



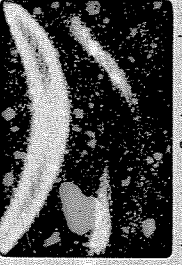
SEAL EDGE WITH WARM IRON.
DO NOT TOUCH FILM.
MADE IN U.S.A.

7707511 Part ring w/ flow structure



SEAL EDGE WITH WARM IRON.
DO NOT TOUCH FILM.
MADE IN U.S.A.

7707511 dikes & clasts



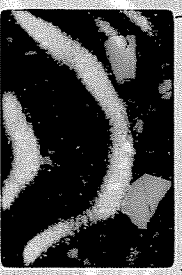
SEAL EDGE WITH WARM IRON.
DO NOT TOUCH FILM.
MADE IN U.S.A.

7707511 Part ring w/ flow structure



SEAL EDGE WITH WARM IRON.
DO NOT TOUCH FILM.
MADE IN U.S.A.

7707511 close up of dikes & clasts



SEAL EDGE WITH WARM IRON.
DO NOT TOUCH FILM.
MADE IN U.S.A.

7707511 contact w/ dikes - reason for this



SEAL EDGE WITH WARM IRON.
DO NOT TOUCH FILM.
MADE IN U.S.A.

7707511 close up of dikes & clasts



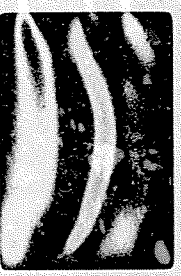
SEAL EDGE WITH WARM IRON.
DO NOT TOUCH FILM.
MADE IN U.S.A.

771157 Across contact of bands



SEAL EDGE WITH WARM IRON,
DO NOT TOUCH FILM.
MADE IN U.S.A.

771357 Typical perforated matrix



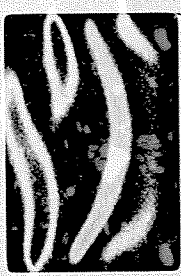
SEAL EDGE WITH WARM IRON,
DO NOT TOUCH FILM.
MADE IN U.S.A. (731)

771157 Across contact of bands



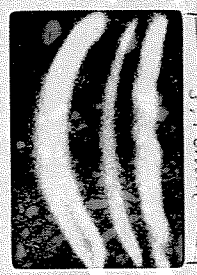
SEAL EDGE WITH WARM IRON,
DO NOT TOUCH FILM.
MADE IN U.S.A.

771357 Typical perforated matrix



SEAL EDGE WITH WARM IRON,
DO NOT TOUCH FILM.
MADE IN U.S.A. (731)

771157 across contact of bands



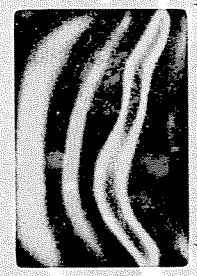
SEAL EDGE WITH WARM IRON,
DO NOT TOUCH FILM.
MADE IN U.S.A.

771357 matrix + clasts



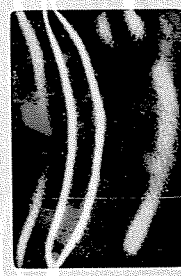
SEAL EDGE WITH WARM IRON,
DO NOT TOUCH FILM.
MADE IN U.S.A.

771157 matrix + clasts



SEAL EDGE WITH WARM IRON,
DO NOT TOUCH FILM.
MADE IN U.S.A.

771357 matrix + clasts



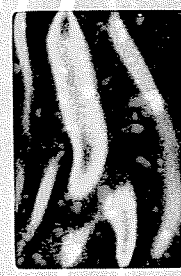
SEAL EDGE WITH WARM IRON,
DO NOT TOUCH FILM.
MADE IN U.S.A. (790)

771157 matrix + clasts



SEAL EDGE WITH WARM IRON,
DO NOT TOUCH FILM.
MADE IN U.S.A.

7721511 Typical even shearing flow structure



SEAL EDGE WITH WARM IRON,
DO NOT TOUCH FILM.
MADE IN U.S.A.

7721511 Typical large shearing structure



SEAL EDGE WITH WARM IRON,
DO NOT TOUCH FILM.
MADE IN U.S.A.

781558 lathy area



SEAL EDGE WITH WARM IRON,
DO NOT TOUCH FILM.
MADE IN U.S.A.

7721511 glassy area



SEAL EDGE WITH WARM IRON,
DO NOT TOUCH FILM.
MADE IN U.S.A.

781558 lathy area



SEAL EDGE WITH WARM IRON,
DO NOT TOUCH FILM.
MADE IN U.S.A.

7721511 glassy area



SEAL EDGE WITH WARM IRON,
DO NOT TOUCH FILM.
MADE IN U.S.A.

781558 somewhat lathy area



SEAL EDGE WITH WARM IRON,
DO NOT TOUCH FILM.
MADE IN U.S.A.

781558 Typical even



SEAL EDGE WITH WARM IRON,
DO NOT TOUCH FILM.
MADE IN U.S.A. (790)

781558 non-lathy area



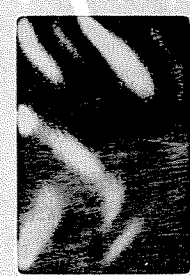
SEAL EDGE WITH WARM IRON,
DO NOT TOUCH FILM.
MADE IN U.S.A.

781558 Typical even



SEAL EDGE WITH WARM IRON,
DO NOT TOUCH FILM.
MADE IN U.S.A. (890)

783387 matrix plug and pyroclastic glass



SEAL EDGE WITH WARM IRON,
DO NOT TOUCH FILM.
MADE IN U.S.A.

78505, 1 at crushed glass
PYA
3.16
22.8



SEAL EDGE WITH WARM IRON.
DO NOT TOUCH FILM.
MADE IN U.S.A.

78505, 1 Typical



SEAL EDGE WITH WARM IRON.
DO NOT TOUCH FILM.
MADE IN U.S.A.

78505, 7 Typical



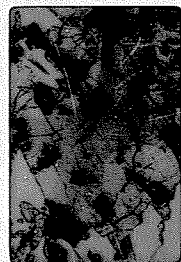
SEAL EDGE WITH WARM IRON.
DO NOT TOUCH FILM.
MADE IN U.S.A.

78505, 7 hour glass PYX



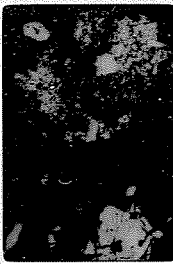
SEAL EDGE WITH WARM IRON.
DO NOT TOUCH FILM.
MADE IN U.S.A.

78505, 7 hour glass PYX



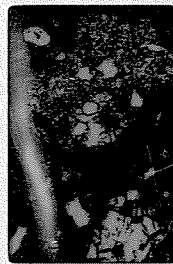
SEAL EDGE WITH WARM IRON.
DO NOT TOUCH FILM.
MADE IN U.S.A.

79035, 7 peck clast



SEAL EDGE WITH WARM IRON.
DO NOT TOUCH FILM.
MADE IN U.S.A.

79035, 7 peck clast



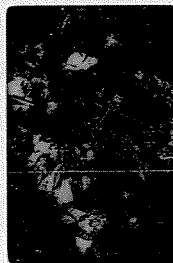
SEAL EDGE WITH WARM IRON.
DO NOT TOUCH FILM.
MADE IN U.S.A.

79035, 7 Typical area



SEAL EDGE WITH WARM IRON.
DO NOT TOUCH FILM.
MADE IN U.S.A.

79035, 7 basalt clast



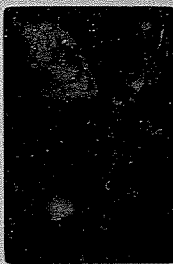
SEAL EDGE WITH WARM IRON.
DO NOT TOUCH FILM.
MADE IN U.S.A.

79035, 7 basalt clast



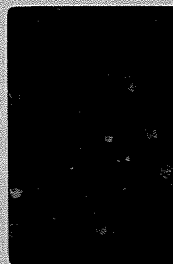
SEAL EDGE WITH WARM IRON.
DO NOT TOUCH FILM.
MADE IN U.S.A.

79135, 12 accretionary glass clasts



SEAL EDGE WITH WARM IRON.
DO NOT TOUCH FILM.
MADE IN U.S.A.

79135, 12 accretionary glass clasts



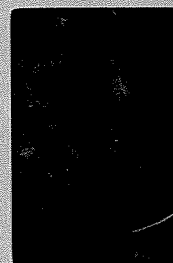
SEAL EDGE WITH WARM IRON.
DO NOT TOUCH FILM.
MADE IN U.S.A.

79135, 12 Typical



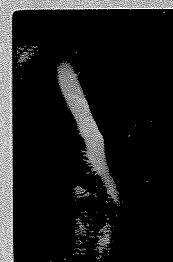
SEAL EDGE WITH WARM IRON.
DO NOT TOUCH FILM.
MADE IN U.S.A.

79135, 12 basalt clast



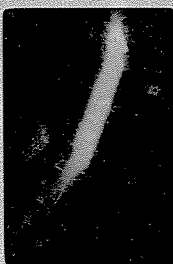
SEAL EDGE WITH WARM IRON.
DO NOT TOUCH FILM.
MADE IN U.S.A.

79135, 12 basalt clast



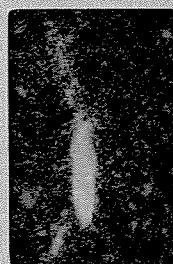
SEAL EDGE WITH WARM IRON.
DO NOT TOUCH FILM.
MADE IN U.S.A.

79135, 12 clasts



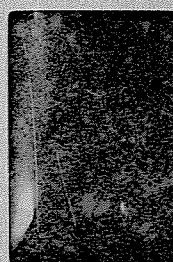
SEAL EDGE WITH WARM IRON.
DO NOT TOUCH FILM.
MADE IN U.S.A.

79135, 11 Typical area



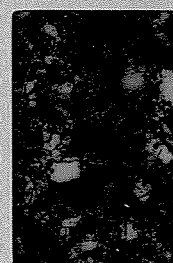
SEAL EDGE WITH WARM IRON.
DO NOT TOUCH FILM.
MADE IN U.S.A.

79135, 11 Typical



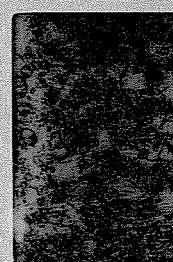
SEAL EDGE WITH WARM IRON.
DO NOT TOUCH FILM.
MADE IN U.S.A.

79135, 11 micaceous of mol in clast



SEAL EDGE WITH WARM IRON.
DO NOT TOUCH FILM.
MADE IN U.S.A.

79135, 11 micaceous of mol in clast



SEAL EDGE WITH WARM IRON.
DO NOT TOUCH FILM.
MADE IN U.S.A.

72215/11 Poly white
1 mm of dust



SEAL EDGE WITH WARM IRON.
DO NOT TOUCH FILM.
MADE IN U.S.A.

5.71-44181

13-450



72215/11 Poly white
1 mm of dust



SEAL EDGE WITH WARM IRON.
DO NOT TOUCH FILM.
MADE IN U.S.A.

5.71-42951

15-415



141820 Poly white
0.025 mm



SEAL EDGE WITH WARM IRON.
DO NOT TOUCH FILM.
MADE IN U.S.A.

16L

17785

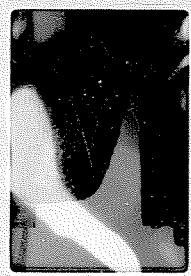


79175

Phinney

16L

79155
15319



Phinney

19L

22L

26L

28L

30L

32L

34L

36L

38L

39L

40L



69.50420

570-805x

23



120145

570-801x

18



12057,17



69.50423

570-799x

17



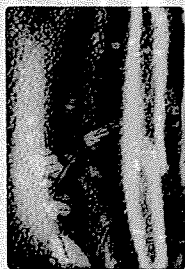
61 12022,6

570-802x

20



Sample 12005,12



69.50422

70-798x

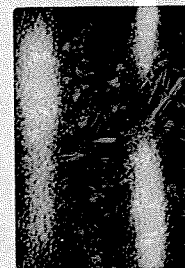
16



12049,2

71-23485

053
1400,5



69.53450

570-806x

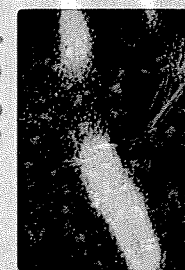
24



12057,35

71-23505

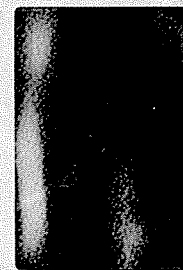
14053,5



69.50452

570-806x

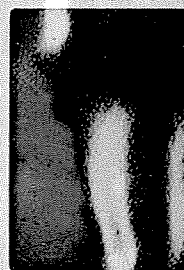
18



12057,27

71-23488

x1 14082,7



14151

1971M ca. 450x
151



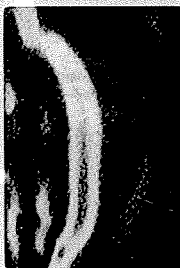
14151

151 1971M
151 1971M



14301

62 (2) 1971M
102



71-23503

14053,5



14307

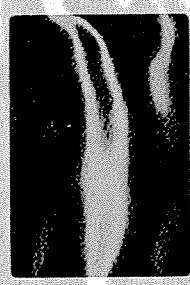
63 (3) 1971M
107

14307



52 (8) 1mm with 307

71-23493



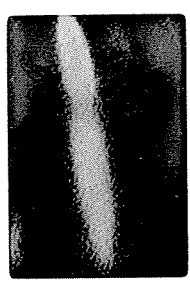
BOX 143101

14302.1

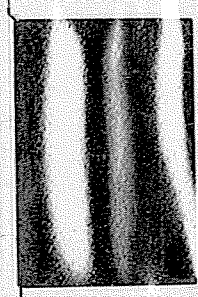


52 (1a) bacteria clust

15323,8

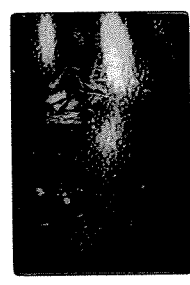


14300



13 (4) 200x 2mm

1532.3,8

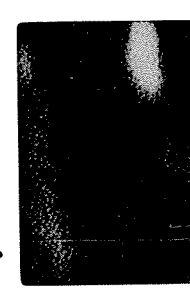


23491



4 X40 14321,6

1532.3,8



1432.1

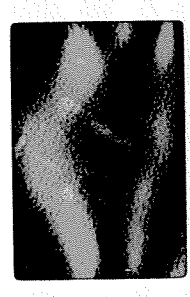


49 (7) 321 npr clust

15323,8

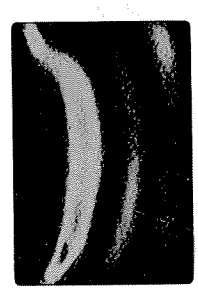


SEAL EDGE WITH WARM IRON.
DO NOT TOUCH FILM.
MADE IN U.S.A.



15327,8

867651



15329,8

SEAL EDGE WITH WARM IRON.
DO NOT TOUCH FILM.
MADE IN U.S.A.



153278

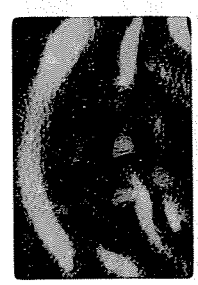


15329,8

SEAL EDGE WITH WARM IRON.
DO NOT TOUCH FILM.
MADE IN U.S.A.



15323,8



15327,8

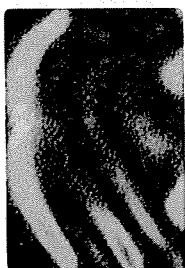


15329,8

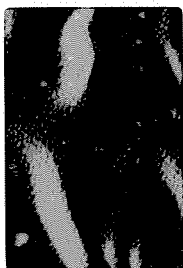


15329,8

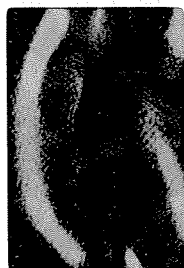
153851



15355,7



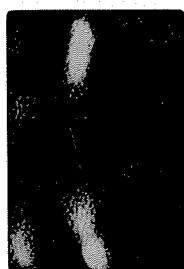
15355,7



15355,7



15355,7



15383,7

~~153851~~



15383,7

15383,7

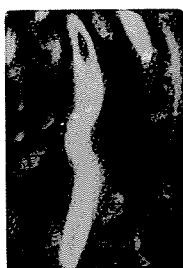


~~153851~~



SEAL EDGE WITH WARM IRON.
DO NOT TOUCH FILM.
MADE IN U.S.A.

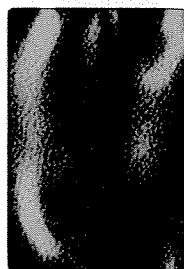
15383,7



~~15383,7~~

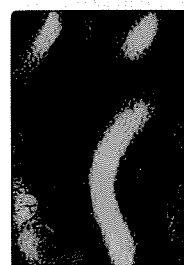


~~153851~~



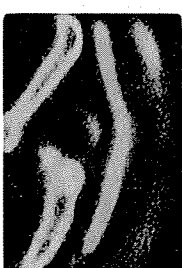
15384,8

15384,8

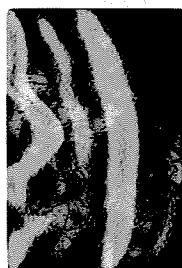


15384,8

15638,9



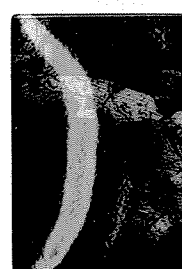
15638,9



15638,9



15638,9



15638,9

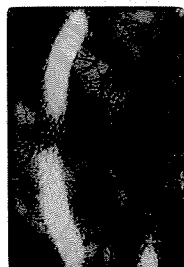


SEAL EDGE WITH WARM IRON.
DO NOT TOUCH FILM.
MADE IN U.S.A.

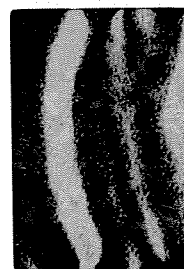
~~15638,9~~



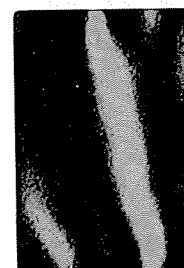
15661,8



15661,8



15661,8



15661,8



15661,8



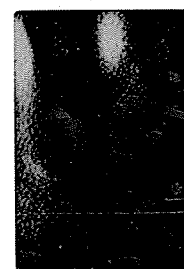
15661,8



15661,8



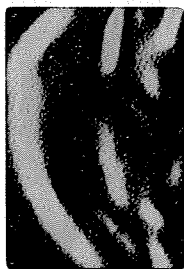
15661,8



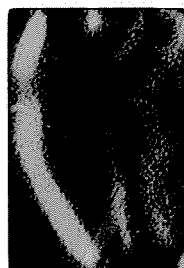
15663,11



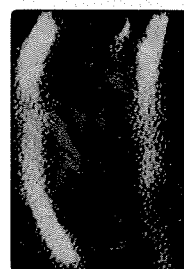
15663,11



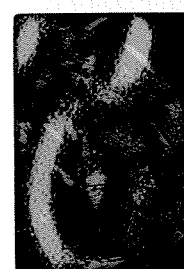
15663,11



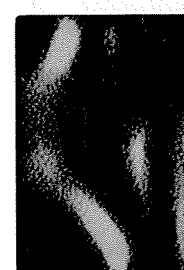
15663,11



15663,11



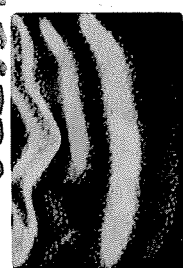
15663,11



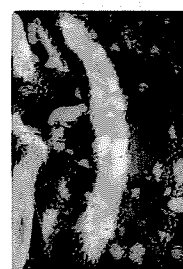
15677,8



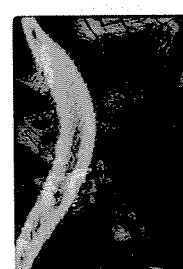
15677,8



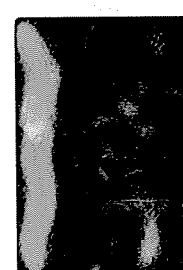
15677,8



15677,8



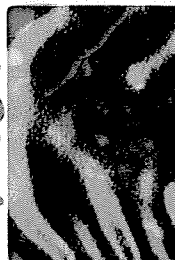
15677,8



15687,6

SEAL EDGE WITH WARM IRON.
DO NOT TOUCH FILM.
MADE IN U.S.A.

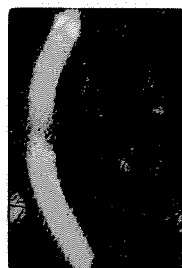
SEAL EDGE WITH WARM IRON.
DO NOT TOUCH FILM.
MADE IN U.S.A.



15687,6
572-18288



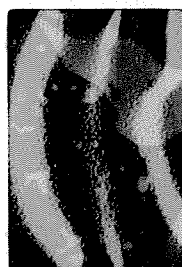
15687,6



15687,6



15687,6



15687,6



97,8951



15687,6



S-74-21909

76505,8 plane
1x



15687,6