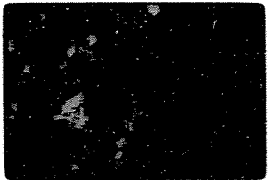
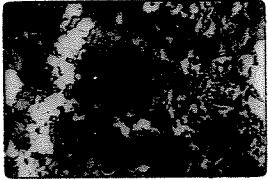
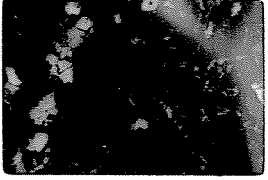
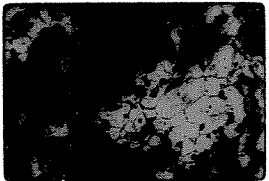
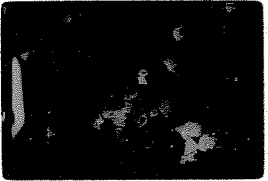


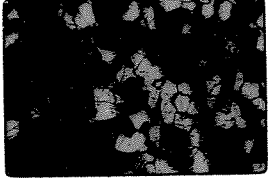
2 DEC74P5
EC-75 4.5

UXN

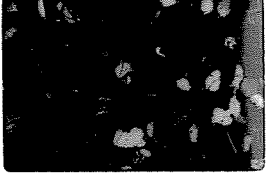
3 DEC74P5
EC-75 3.4

Close-up of contact in #1

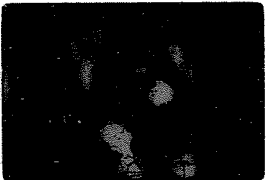
4 DEC74P5
EC-75 3.4

UXN

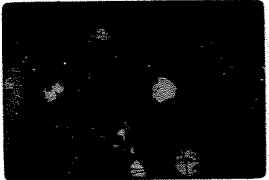
5 DEC74P5
EC-75 3.4

Polygonal texture in hornfels

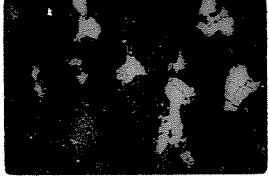
6 DEC74P502
EC-75 3.4

UXN

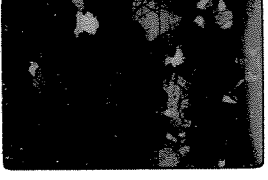
7 DEC74P502
EC-103 3.4

meta oliv gabbro

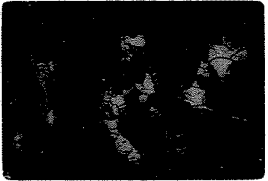
8 DEC74P502
EC-103 3.4

UXN

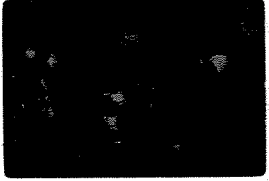
9 DEC74P502
DL-5-73 8.5

Extens. small gabbro - no oliv or opx


10 DEC74P502
DL-5-73 8.5

UXN


11 DEC74P5
DL-5-73 8.5

Extens. fused gabbro

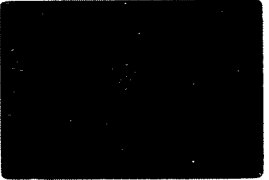
12 DEC74P5
DL-5-73 8.5

UXN


13 DEC74P5
DL-5-56 8.5

Gabbro

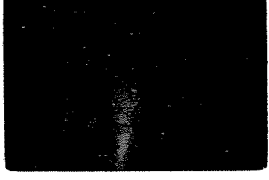
14 DEC74P5
DL-5-56 8.5

UXN


15 DEC74P5
DL-5-55 8.5

meta feldspathic hbl
pxinite

16 DEC74P502
DL-5-55 8.5

UXN

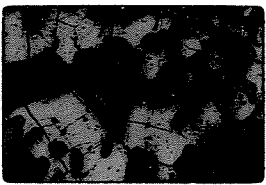
17 DEC74P502
DL-5-55 8.5

Meta anorthos - meta
feldspathic webst. contact

18 DEC74P502
DL-5-58 8.5

UXN

19 DEC74P502
DL-5-55 8.5

Metawebst. Lt pc, hbl w/
opx relics

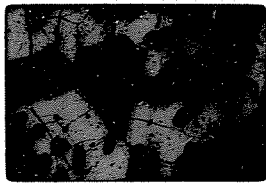
20 DEC74P502
DL-5-55 8.5

UXN

21 DEC74P5
EL-58 3.4



Single thin amphib rimming
cpxs, pseudotach cmt in pl

22 DEC74P5
EL-58 3.4



Same as 21

23 DEC74P5
EL-58 3.4



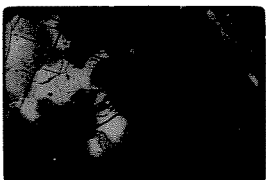
UxN

24 DEC74P5
EL-58 3.4



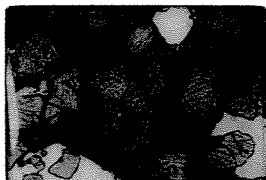
Opt. contain. amphib crystals,
pieces of single cpx encl in 2
cpxs

25 DEC74P5
EL-58 3.4



UxN

26 DEC74P5⁰¹
EL-58 3.4



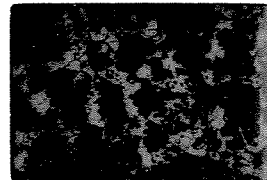
Single quartz amphib. along
grain borders px & pc 51

27 DEC74P5⁰¹
EL-58 3.4



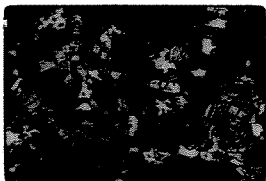
UxN

28 DEC74P5⁰¹
EL-74 8.8



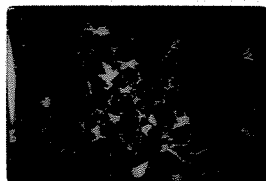
Gran. sils, hyper-gran.
oliv gabbro

29 DEC74P5⁰¹
EL-75 8.8



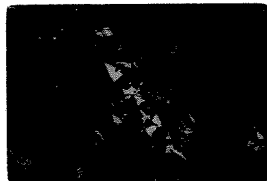
UxN

30 DEC74P5⁰¹
EL-71 8.8



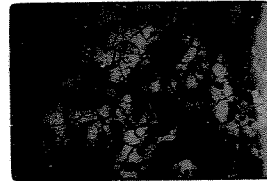
Gran. Poik pc in oliv gabbro

31 DEC74P5
EL-71 8.8



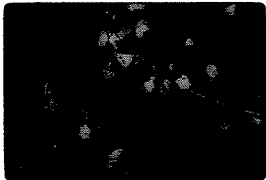
UxN

32 DEC74P5
EL-81 8.8



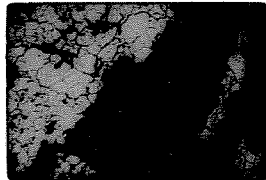
Meta oliv. gabbro

33 DEC74P5
EL-81 8.8



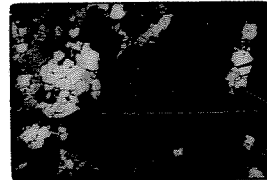
UxN

34 DEC74P5
EL-81 8.8



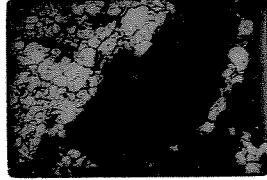
Partial repl. of cpx by hb1
in meta oliv. gabbro

35 DEC74P5
EL-81 8.8



UxN

36 DEC74P5⁰¹
EL-81 8.8



Same as 34

37 DEC74P5⁰¹
EL-81 8.8



Relic pc & partial repl. of
cpx by hb1 in meta oliv. gabbro

38 DEC74P5⁰¹
EL-81 8.8



UxN

1 DEC74P5
SQ-4-106 3.4



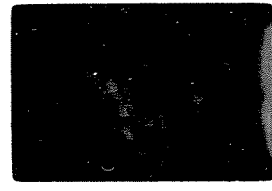
Pl + OI reac. rims on
spinel in melanovite

2 DEC74P5
SQ-4-106 3.4



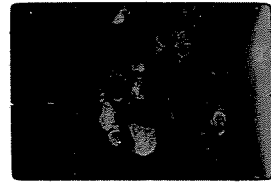
UXN

3 DEC74P5
SQ-4-106 8.8



Layering, melanovite, spinel
reac rims locus of melting

4 DEC74P5
SQ-4-106 8.8



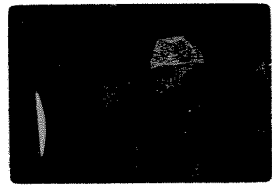
UXN

5 DEC74P5
SQ-4-106 3.4



Melt zones, melanovite.
New pl - px

6 DEC74P5⁰¹
SQ-4-106 3.4



UXN

7 DEC74P5⁰¹
SQ-4-105 8.8



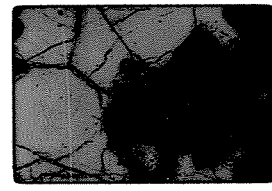
Polyg. pl + partly melted
px w/ new oliv

8 DEC74P5⁰¹
SQ-4-105 8.8



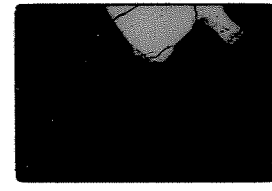
UXN

9 DEC74P5⁰¹
SQ-4-105 3.4



Polyg. pl, vesicular glass
+ new oliv

10 DEC74P5⁰¹
SQ-4-105 3.4



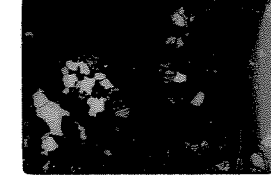
UXN

11 DEC74P5
SQ-4-23 8.8



Melanovite - metawebst.
infat

12 DEC74P5
SQ-4-23 8.8



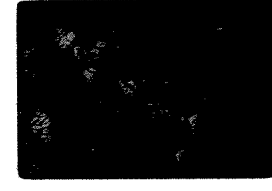
UXN

13 DEC74P5
SQ-4-23 8.8



Metawebsterite, spinels,
encl in pxs + along grain
boundaries

14 DEC74P5
SQ-4-23 8.8



UXN

15 DEC74P5
SQ-4-23 3.4



Polyg. pl + sp - pl; oliv +
fusion

16 DEC74P5⁰¹
SQ-4-23 3.4



UXN

17 DEC74P5⁰¹
EL-58 8.8



Cpx-pl intergrs

18 DEC74P5⁰¹
EL-58 8.8



UXN

19 DEC74P5⁰¹
EL-58 8.8



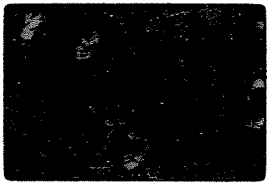
green sp cluster in pl (res-
idue of sp + px -> pl + ?)
amorph. relict of cpx

20 DEC74P5⁰¹
EL-58 8.8



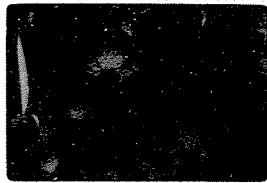
UXN

21 DEC 74 P5
DL-5-58 3.4



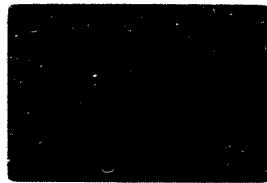
Close of metasandst.

22 DEC 74 P5
DL-5-58 3.4



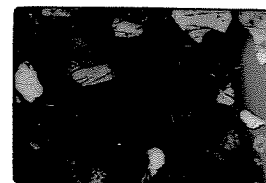
UXLN

23 DEC 74 P5
DL-5-58 3.4



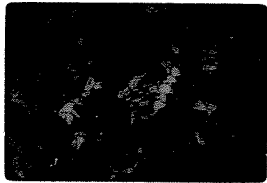
Meta-sandstone band showing green band. Emission

24 DEC 74 P5
DL-5-58 3.4



UXLN

25 DEC 74 P5
DL-5-76 8.8



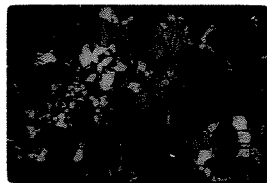
Symplectite in rock

26 DEC 74 P5 02
DL-5-76 8.8



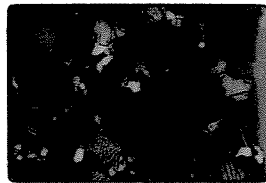
UXLN

27 DEC 74 P5 02
DL-5-76 8.8



Symplectite in rock

28 DEC 74 P5 02
DL-5-76 8.8



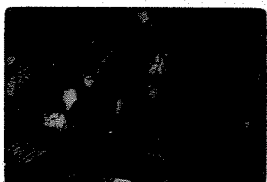
UXLN

29 DEC 74 P5 02
DL-5-76 3.4



Close of symplectite

30 DEC 74 P5 02
DL-5-76 3.4



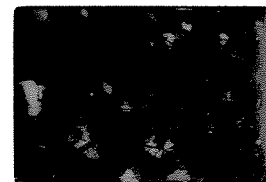
UXLN

31 DEC 74 P5
DL-5-106 8.8



Extensiv. fused metagabb.

32 DEC 74 P5
DL-5-106 8.8



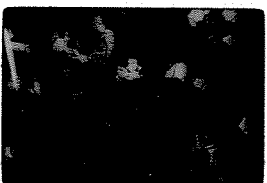
UXLN

33 DEC 74 P5
DL-5-106 8.8



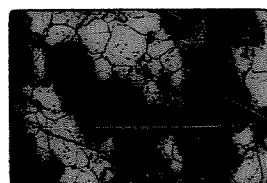
Extensiv. fused metagabb

34 DEC 74 P5
DL-5-106 8.8



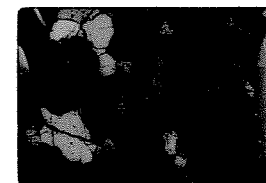
UXLN

35 DEC 74 P5
DL-5-106 3.4



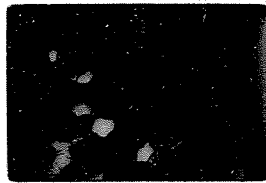
Much fused metagabbro

36 DEC 74 P5 02
DL-5-106 3.4



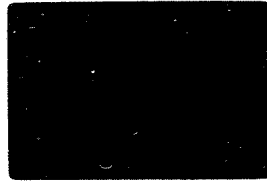
UXLN

2 DEC74P5
Ep-3-162 8.5



UXN

3 DEC74P5
Ep-3-111 8.5



Partly metamorphosed
amphib. w/ opx, cpx, mag.

4 DEC74P5
Ep-3-111 8.5



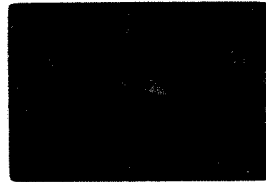
UXN

5 DEC74P5
Ep-3-111 8.5



Reformed g. relic

6 DEC74P5⁰³
Ep-3-111 8.5



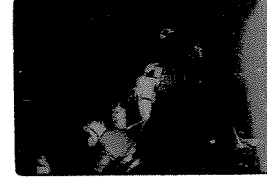
UXN

7 DEC74P5⁰³
Ep-3-104 8.5



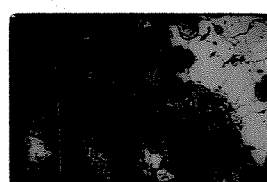
Partly fused, partly rextlliz
monite

8 DEC74P5⁰³
Ep-3-104 8.5



UXN

9 DEC74P5⁰³
Ep-3-104 8.5



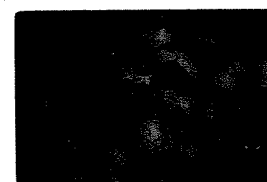
More melted part

10 DEC74P5⁰³
Ep-3-104 8.5



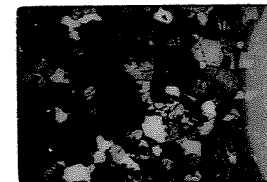
UXN

11 DEC74P5
Ep-3-104 8.5



Compl. rextlliz, partly
fused part

12 DEC74P5
Ep-3-104 8.5



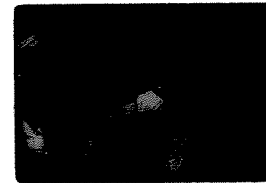
UXN

13 DEC74P5
Ep-3-104 3.4



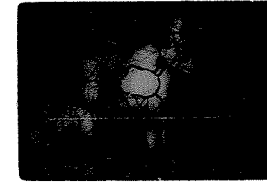
Partly melted, rextlliz part
Quench Oliv. Symplectite

14 DEC74P5
Ep-3-104 3.4



UXN

15 DEC74P5
Ep-3-93 8.5



Kelyphitized gnt hornfels

16 DEC74P5⁰³
Ep-3-93 8.5



UXN

17 DEC74P5⁰³
Ep-3-93 8.5



Gnt hornfels

18 DEC74P5⁰³
Ep-3-93 8.5



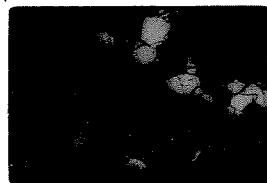
UXN

19 DEC74P5⁰³
Ep-3-112 8.5



Metanorite

20 DEC74P5⁰³
Ep-3-112 8.5



UXN

21 DEC74P5
Ep-3-112 8.8

More px-rich part of
metanorite

22 DEC74P5
Ep-3-112 8.8

UXN

23 DEC74P5
Ep-3-124-2 8.8

Foliated metanorite

24 DEC74P5
Ep-3-124-2 8.8

UXN

25 DEC74P5
Ep-3-124-2 3.4

Metanorite

26 DEC74P5⁰³
Ep-3-124-2 3.4

UXN

27 DEC74P5⁰³
Ep-3-153-1 8.8

Partly metamorphosed waste
w/ some interstit. mag.

28 DEC74P5⁰³
Ep-3-153-1 8.8

UXN

29 DEC74P5⁰³
Ep-3-153-1 8.8

Deformed relic pc in
partly mm matrix

30 DEC74P5⁰³
Ep-3-153-1 8.8

UXN

31 DEC74P5
Ep-1-54-2 8.8

Deformed relic pc in partly
mm matrix

32 DEC74P5
Ep-1-54-2 8.8

UXN

33 DEC74P5
Ep-1-54-2 8.8

Relic deformed pc in partly
mm matrix

34 DEC74P5
Ep-1-54-2 8.8

UXN

35 DEC74P5
Ep-1-54-1 8.8

Banded metanorite +
meta-anorthosite

36 DEC74P5⁰³
Ep-1-54-1 8.8

UXN


37 DEC74P5⁰³
Ep-1-54-1 8.8

Banded metanorite +
meta-anorthosite

38 DEC74P5⁰³
Ep-1-54-1 3.4

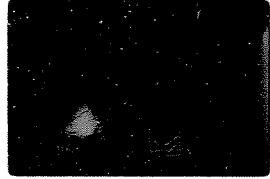
Close of polyg. texture

1 DECT4P5
Ki-5-129 8.8



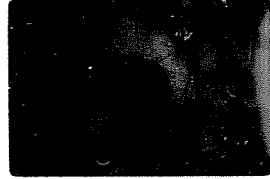
Partly melted, ol. mm
gabbro; no ol, opx

2 DECT4P5
Ki-5-129 4.8




UxN

3 DECT4P5
Ki-5-112-1 8.8



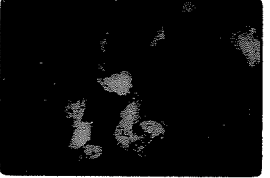
Poik. pc w/ "cummingtonite"
opx w/ exsol.

4 DECT4P5
Ki-5-112-1 8.8



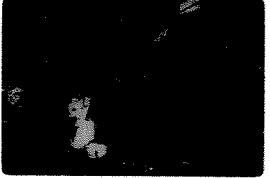
UxN

5 DECT4P5
Ki-5-112-1 8.8



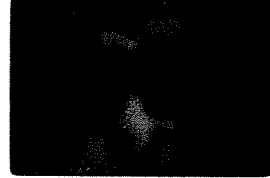
Partly melted area. Note
opx clusters

6 DECT4P5⁰⁴
Ki-5-112-1 8.8




UxN

7 DECT4P5⁰⁴
Ki-5-112-2 8.8



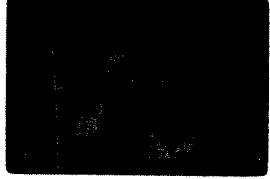
Opx clusters in pc

8 DECT4P5⁰⁴
Ki-5-112-2 8.8




UxN

9 DECT4P5⁰⁴
Ki-5-86 8.8




Fine-grained oliv. gabb.

10 DECT4P5⁰⁴
Ki-5-86 8.8



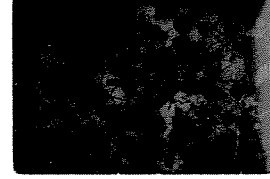
UxN

11 DECT4P5
Ki-5-86 8.8




UxN

12 DECT4P5
Ki-5-86 8.8




Poik pc + cumm. opx w/
exsol.

13 DECT4P5
Ki-5-86 8.8




UxN

14 DECT4P5
Ki-5-76 4.8




UxN

15 DECT4P5
Ki-5-78 8.8



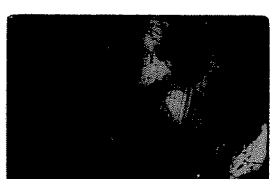
UxN

16 DECT4P5⁰⁴
Ki-5-75 8.8



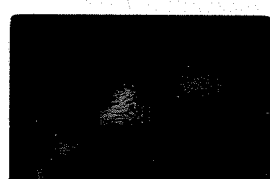
UxN

17 DECT4P5⁰⁴
Ki-5-75 8.8




UxN

18 DECT4P5⁰⁴
Ki-5-75 8.8



Complex px clusters &
biopyx

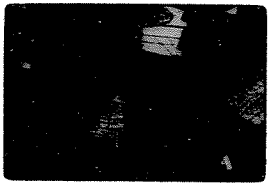
19 DECT4P5⁰⁴
Ki-5-75 8.8



UxN

21 DEC 74P5

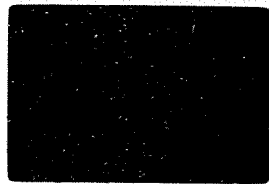
Ki-5-70 8.6



Pl-poor matrix, UxN

22 DEC 74P5

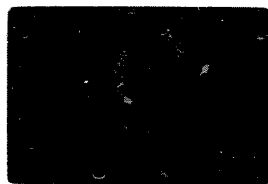
Ki-5-49 8.8



"porphyritic" Oliv. "matrix"
Oliv. olivocryps + cpx coronas
in opx

23 DEC 74P5

Ki-5-49 8.5



UxN

24 DEC 74P5

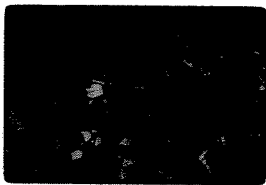
Ki-5-49 8.8



Another view

25 DEC 74P5

Ki-5-49 8.6



UxN

26 DEC 74P5 04

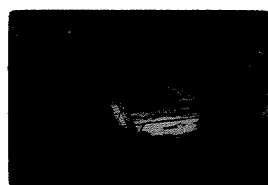
Ki-5-47-1 8.8



Hypid. granular matrix
Vesicular glass

27 DEC 74P5 04

Ki-5-47-1 8.8



UxN

28 DEC 74P5 04

Ki-5-42 8.8



Hypid. gran. matrix

29 DEC 74P5 04

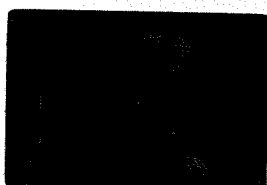
Ki-5-42 8.8



UxN

30 DEC 74P5 04

Ki-5-40 8.8



Hypid. ol-opx gabbrro
Note ol incl in opx

31 DEC 74P5

Ki-5-40 8.8



UxN

32 DEC 74P5

Ki-5-40 8.6



Another showing spinel
clusters in pl

33 DEC 74P5

Ki-5-40 8.6



UxN

34 DEC 74P5

Ki-5-40 8.6



Same as 32

35 DEC 74P5

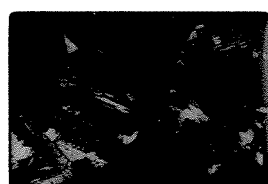
Ki-5-18 8.8



opx prisms in practically
matrix

36 DEC 74P5 04

Ki-5-18 8.6



UxN

37 DEC 74P5 04

Ki-5-18 8.6



Another

38 DEC 74P5 04

Ki-5-18 8.6



UxN

1 DEC74P5
Ki-5-94-2 8.4

Contact of coarse ~~gabbro~~ gabbro & fine-grained oliv. gabbro

2 DEC74P5
Ki-5-95-2 8.4

UxN

3 DEC74P5
Ki-5-95-2 3.4

oliv. poikilitically enclosing pc in k.g. gabbro

4 DEC74P5
Ki-5-95-2 3.4

UxN

5 DEC74P5
Ki-5-95-2 3.4

2 differently oriented oliv. olivocycloz

6 DEC74P5⁰⁵
Ki-5-95-2 3.4

UxN

7 DEC74P5⁰⁵
Ki-5-125 3.4

odd oliv. opx-Lpx intergr.

8 DEC74P5⁰⁵
Ki-5-125 3.4

UxN

9 DEC74P5⁰⁵
Ki-5-134-2 8.4

Partial mm, extensive fusion of norite

11 DEC74P5⁰⁵
Ki-5-134-2 8.4

unmeta. part of norite

12 DEC74P5
Ki-5-134-2 8.4

UxN

13 DEC74P5
Ki-5-134-1 8.4

Fusion in unmeta part of norite

14 DEC74P5
Ki-5-134-1 8.4

UxN

15 DEC74P5
Ki-5-132 8.4

much fused, partly mm norite

16 DEC74P5
Ki-5-132 8.4

UxN

17 DEC74P5⁰⁵
Ki-5-127-1 8.4

Lower oliv. in UxN. Rec. of big oliv. inside cont. Big pc with pool of brown glass

18 DEC74P5⁰⁵
Ki-5-127-1 8.4

UxN

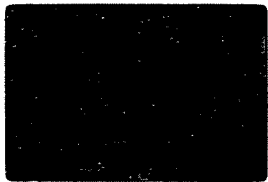
19 DEC74P5⁰⁵
Ki-5-127-1 8.4

complex pxs & big oliv. inside big oliv. Much fusion

20 DEC74P5⁰⁵
Ki-5-127-1 8.4

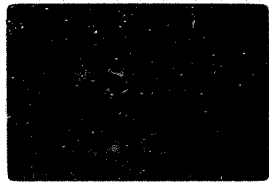
UxN

21 DEC 74P5
Ki-5-127-1 8.5



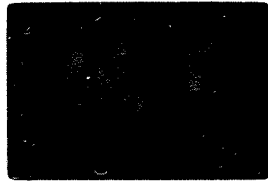
Thin dike

22 DEC 74P5
Ki-5-127-1 8.5



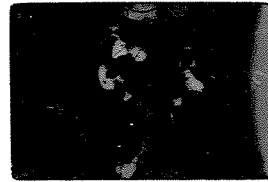
UXN

23 DEC 74P5
Ki-5-126-2 8.5



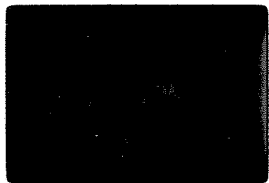
Thin dike, gabbro dike
in chert.

24 DEC 74P5
Ki-5-126-2 8.5



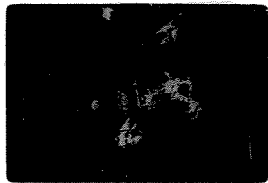
UXN

25 DEC 74P5
Ki-5-126-2 8.5



Dike & feldspathic patches
in chert.

26 DEC 74P5⁰⁵
Ki-5-126-2 8.5



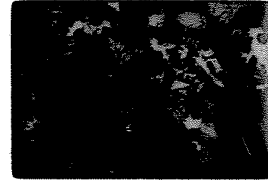
UXN

27 DEC 74P5⁰⁵
Ki-5-126-2 8.5



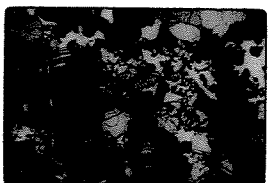
Wedge of peridot. in dike

28 DEC 74P5⁰⁵
Ki-5-126-2 8.5



UXN

29 DEC 74P5⁰⁵
Ki-5-126-2 8.5



Same as 29

30 DEC 74P5⁰⁵
Ki-5-126-2 3.4



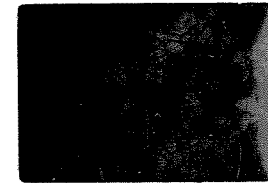
Small clinopyroxene xenocryst
in dike

31 DEC 74P5
Ki-5-126-2 8.5



UXN

32 DEC 74P5
Ki-5-97 8.5



Peridotite in dike.

33 DEC 74P5
Ki-5-97 8.5



UXN

34 DEC 74P5
Ki-5-27 8.5



Contact of partly mm dike
gabbro of chert - spinel
in chert, pleochroic, spinel is opt

35 DEC 74P5
Ki-5-27 8.5



UXN

36 DEC 74P5⁰⁵
Ki-5-27 8.5



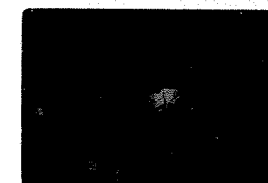
Contact partly mm dike
gabbro of chert

37 DEC 74P5⁰⁵
Ki-5-27 8.5



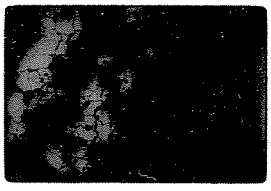
UXN

38 DEC 74P5⁰⁵
Ki-5-27 8.5



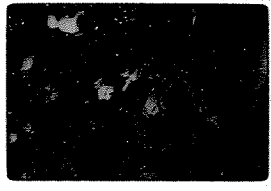
More as melted, unmm
part of gabbro

1 DEC74P5
Ki-5-27 8.4



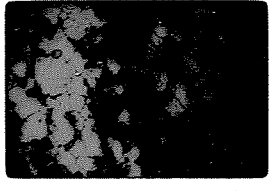
Contact partly mm gabbro
& Uvuz.

2 DEC74P5
Ki-5-27 8.4



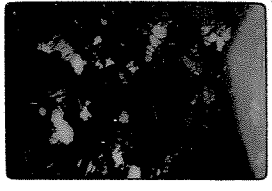
Uvuz

3 DEC74P5
Ki-5-27 8.4



Contact partly metamorph.
and gabbro & Uvuzite

4 DEC74P5
Ki-5-27 8.4



Uvuz

5 DEC74P5
~~Ki-2-1~~ Gi-2-1 8.4



Thin metabas. dike in
Uvuzite

6 DEC74P5⁰⁶
Gi-2-1 8.4



Uvuz

7 DEC74P5⁰⁶
Gi-2-1 3.4



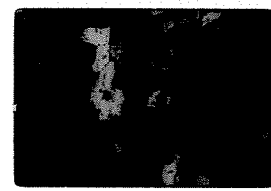
Thin metabas. dike in
Uvuz. Pxs common along
edges

9 DEC74P5⁰⁶
Gi-2-1 3.4



Thin metabas. dike
in Uvuzite

10 DEC74P5⁰⁶
Gi-2-1 3.4



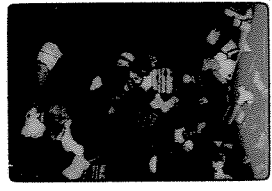
Uvuz

11 DEC74P5
Ki-5-14 8.4



Contact of mm & unmeta.
basites, both w/ pink hbl
Both melted, melted

12 DEC74P5
Ki-5-14 8.4



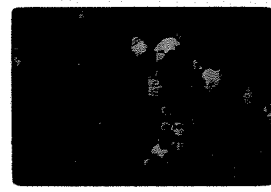
Uvuz

13 DEC74P5
Ki-5-14 8.4



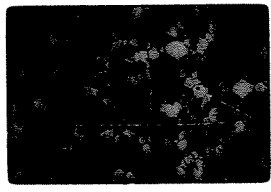
Meta & unmeta basites

14 DEC74P5
Ki-5-14 8.4



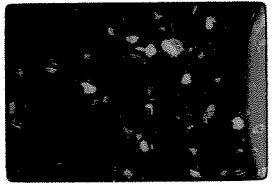
Uvuz

15 DEC74P5
Ki-5-14 8.4



Pink amphib. in meta-
part

16 DEC74P5⁰⁶
Ki-5-14 8.4



Uvuz

17 DEC74P5⁰⁶
Ki-5-14 8.4



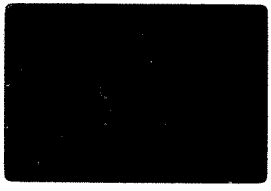
Partly mm oliv gabbro
dike - cuts Uvuzite
branch in Uvuz

18 DEC74P5⁰⁶
Ki-5-14 8.4



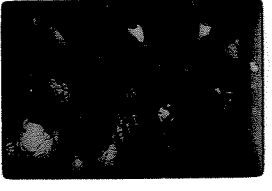
Uvuz

19 DEC74P5⁰⁶
Ki-5-14 8.4



Contact of partly mm gabbro
dike & Uvuz. Thin amphib.
(thin w/ pt to left, in contact)

20 DEC74P5⁰⁶
Ki-5-14 8.4



Uvuz

21 DEC74P5

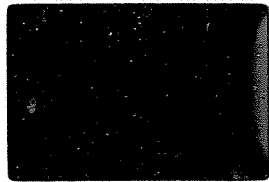
Ki-5-4 3.4



Twin offshoot from main gabbro like

22 DEC74P5

Ki-5-4 3.4



UXN

23 DEC74P5

Ki-5-4 3.4



Same vein as 21, further from main dike

24 DEC74P5

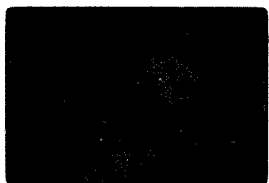
Ki-5-4 3.4



UXN

25 DEC74P5

WK-1-76 3.4



green spinel gabbro

26 DEC74P5 06

WK-1-76 3.4



UXN

27 DEC74P5 06

WK-1-76 3.4



green spinel - cpx intergrowth

28 DEC74P5 06

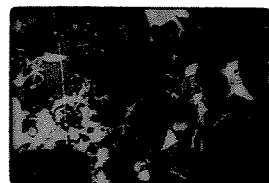
WK-1-76 3.4



UXN

29 DEC74P5 06

Ki-2-25 3.4



Coarse spinel in ant spinel gabbro

30 DEC74P5 06

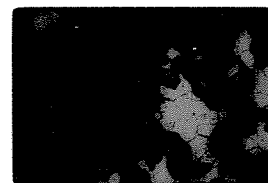
Ki-2-25 3.4



UXN

31 DEC74P5

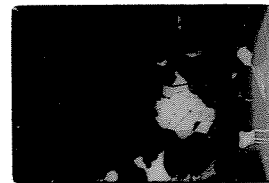
Ki-2-25 3.4



Pelite? cpx in metagabbro

32 DEC74P5

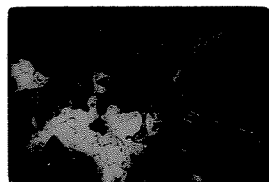
Ki-2-25 3.4



UXN

33 DEC74P5

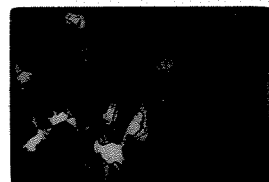
Ki-2-25 3.4



Metagabbro grading to meta(?) green spinel cpxinite

34 DEC74P5

Ki-2-25 3.4



UXN

35 DEC74P5

Ki-2-12 3.4



Cpxinite made but cpx - Micron sp + cpx -> petol Huc.

36 DEC74P5 06

Ki-2-12 3.4



UXN

37 DEC74P5 06

Ki-2-12 3.4



close of sp + cpx -> pct Oliv Huc

38 DEC74P5 06

Ki-2-12 3.4



UXN

1 DEC74P5
 Wi-1-111 8.4

Comb struc - quartz
 cpx & pc

2 DEC74P5
 Wi-1-111 8.4

UxN

3 DEC74P5
 Wi-1-111 8.4

Quartz pc & glass in
 comb struc

4 DEC74P5
 Wi-1-111 8.4

UxN

5 DEC74P5
 Wi-1-111 8.4

Bands of quartz pc in
 comb struc; no interven-
 ing px bands

6 DEC74P507
 Wi-1-111 8.4

UxN

7 DEC74P507
 Wi-1-108 8.4

Quartz pc, pc, glass
 comb struc. Note change
 in px band width

8 DEC74P507
 Wi-1-108 8.4

UxN

9 DEC74P507
 Wi-1-108 8.4

1 grain thick px band
 X3 single pc prisms

10 DEC74P507
 Wi-1-108 8.4

UxN

11 DEC74P5
 Wi-1-108 8.4

Close of 1 grain thick
 px band

12 DEC74P5
 Wi-1-108 8.4

UxN

13 DEC74P5
 Ki-2-104 8.4

Cutout (1 of 2) of dyke
 like & coarse perthite

14 DEC74P5
 Ki-2-104 8.4

UxN

15 DEC74P5
~~Wi-1-24~~ 6.7

Perth cpx enclosing cpx
 in "nodule"

16 DEC74P507
 Wi-1-24 6.7

UxN

17 DEC74P507
 Wi-1-24 8.4

Perth amphibole en-
 closing cpx subhedral

18 DEC74P507
 Wi-1-24 8.4

UxN

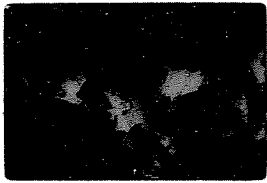
19 DEC74P507
 Wi-1-24 8.4

Perth. pc enclosing
 cpx subhedral

20 DEC74P507
 Wi-1-24 8.4

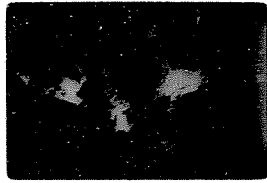
UxN

21 DEC74P5
Wi-1-24 8.4



Poik. pc w/ subradial opx

22 DEC74P5
Wi-1-24 8.4



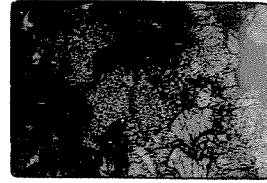
Uxn

23 DEC74P5
Wi-1-24 8.4



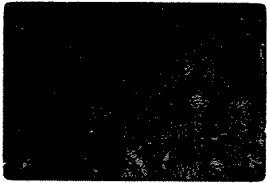
Wind texture in opx olivocrypt

24 DEC74P5
Wi-1-24 8.4



Uxn

25 DEC74P5
Wi-1-24 8.4



Uxn

26 DEC74P507
Wi-1-24 8.4



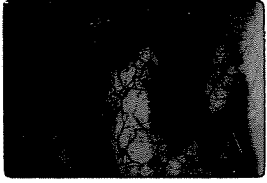
Odd opx olivocrypt intergrowths

27 DEC74P507
Wi-1-24 8.4



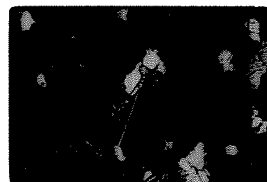
Uxn

28 DEC74P507
Wi-1-112 8.4



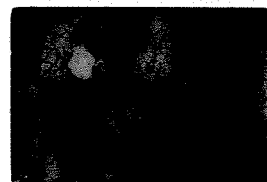
Poik. min. grains of gabbro w/ deformed pc relics

29 DEC74P507
Wi-1-112 8.4



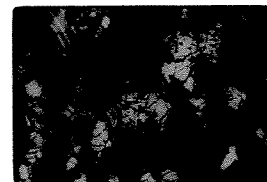
Uxn

30 DEC74P507
Wi-1-112 8.4



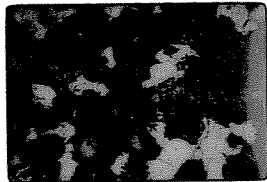
Poik. min. gabbro w/ symplectites + relic opx, pc

31 DEC74P5
Wi-1-112 8.4



Uxn

32 DEC74P5
SC-1-15-2 8.4



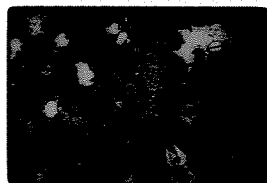
oliv. gabbro. Anticryst. amphib. mostly melted

33 DEC74P5
SC-1-15-2 8.4



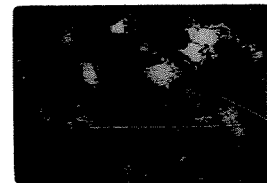
Uxn

34 DEC74P5
SC-1-15-2 8.4



oliv. gabbro - green sp

35 DEC74P5
SC-1-15-2 8.4



Uxn

36 DEC74P507
Ba-5-46 8.4



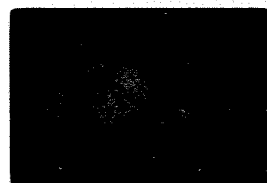
Poik. melanocryst. pc. Relic. Vesicular glass

37 DEC74P507
Ba-5-46 8.4



Uxn

38 DEC74P507
Ba-5-47 8.4



Poik. melted matrix

1 DEC74P5
Ba-3-1 8.4

Gabbro. All px fused at one end. This is fresh end

2 DEC74P5
Ba-3-1 8.4

UXN

3 DEC74P5
Ba-3-1 8.4

Fresh + melted gabbro

4 DEC74P5
Ba-3-1 8.4

UXN

5 DEC74P5
Ba-2-112 8.4

Metabasite w/ sphene
deformed px. No oliv. Px
clusters prob. relict

6 DEC74P5 08
Ba-2-112 8.4

UXN

7 DEC74P5 08
Ba-2-112 8.4

Unresolv. cpxs

8 DEC74P5 08
Ba-2-112 8.4

UXN

9 DEC74P5 08
Ba-2-112 8.4

Cpx relic

10 DEC74P5 08
Ba-2-112 8.4

UXN

11 DEC74P5
Ba-1-104 8.4

Metabasite, no oliv, cpx

12 DEC74P5
Ba-1-104 8.4

UXN

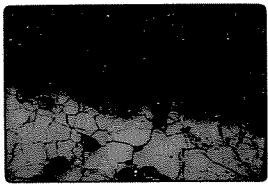
13 DEC74P5
Ba-1-104 8.4

Metabasite

14 DEC74P5
Ba-1-104 8.4

UXN

1 Ep-3-127-2 09 JAN 1987 8.4



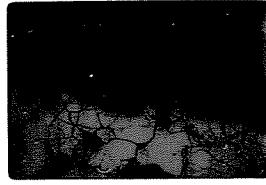
Metagabbroic rock w/ relic cpx and resolution lamellae

2 Ep-3-127-2 09 JAN 1987 8.4



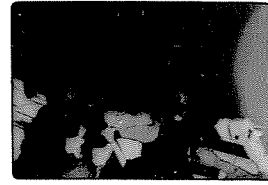
UNKNOWN

3 Ep-3-127-2 09 JAN 1987 8.4



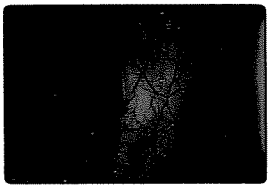
Metagabbroic rock w/ relic cpx

4 Ep-3-127-2 09 JAN 1987 8.4



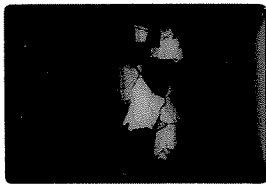
UNKNOWN

5 Ep-3-127-2 09 JAN 1987 8.4



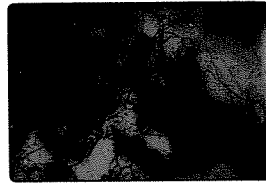
Metagabbroic rock - note partial melting

6 Ep-3-127-2 09 JAN 1987 8.3



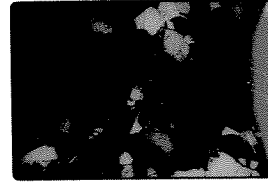
UNKNOWN

7 Ep-3-127-2 09 JAN 1987 8.4



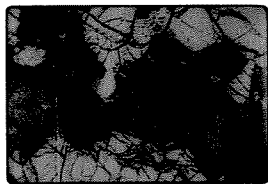
Extensive fusion, metagabbroic

8 Ep-3-127-2 09 JAN 1987 8.4



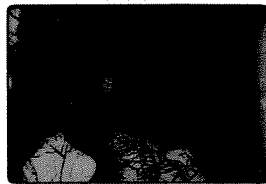
UNKNOWN

9 Ki-5-2 09 JAN 1987 8.4



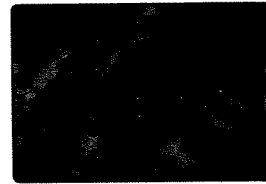
Partially melted clinopyroxene in diopside clinopyroxene

10 Ki-5-2 09 JAN 1987 8.4



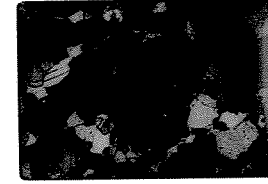
UNKNOWN

11 Ki-5-12-1 09 JAN 1987 8.4



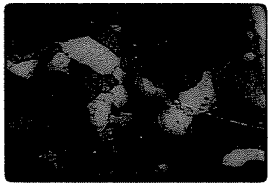
Interstitial plagioclase coronas on spinel in porphyroclastic diopside clinopyroxene

12 Ki-5-12-1 09 JAN 1987 8.4



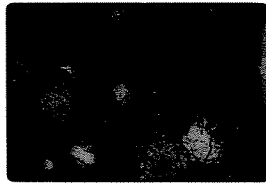
UNKNOWN

13 Ki-5-12-1 09 JAN 1987 8.4



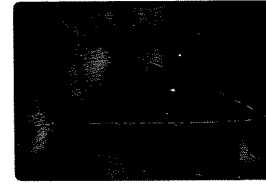
Plagioclase + olivine coronas on spinel in porphyroclastic clinopyroxene

14 Ki-5-12-1 09 JAN 1987 8.4



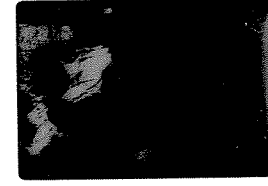
UNKNOWN

15 Ki-5-13-1 09 JAN 1987 8.4



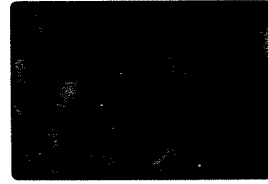
Wormy spinel plagioclase + olivine coronas on spinel; some partly resorbed w/ glass + quenched olivine

16 Ki-5-13-1 09 JAN 1987 8.4



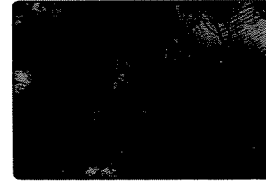
UNKNOWN

17 Ki-5-13-1 09 JAN 1987 8.4



Partial fusion of coarse plagioclase coronas + spinel w/ plagioclase + glass

18 Ki-5-13-1 09 JAN 1987 8.4



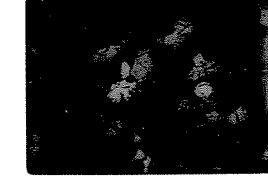
UNKNOWN

19 Ki-5-35 09 JAN 1987 8.4



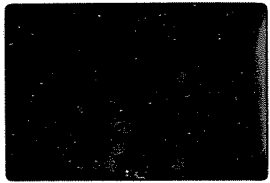
Olivine + spinel in clinopyroxene with some vesiculated glass

20 Ki-5-35 09 JAN 1987 8.4



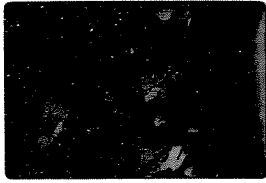
UNKNOWN

21 JAN 1987 09
Ki-5-37 8.4



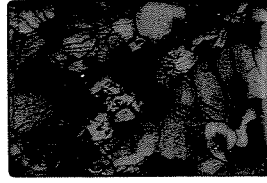
Recrystallized (including
pc?) kalsopitrite & hornblende

22 JAN 1987 09
Ki-5-37 8.4



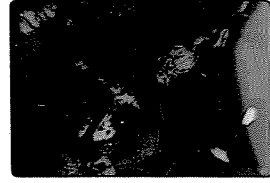
U.X.N.

23 JAN 1987 09
Ki-5-37 8.4



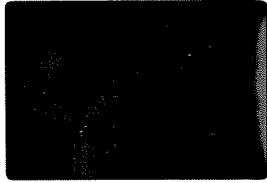
Partial fusion of kalsopitrite,
Hornblende

24 JAN 1987 09
Ki-5-37 3.4



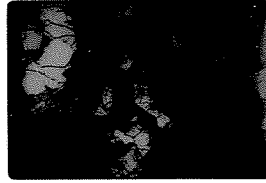
U.X.N.

25 JAN 1987 09
Ki-5-45-1 8.4



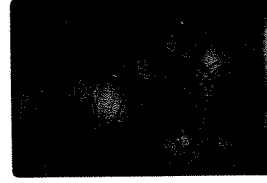
Spinel in hornblende in
webst, not in hornbl.

26 JAN 1987 09
Ki-5-45-1 8.4



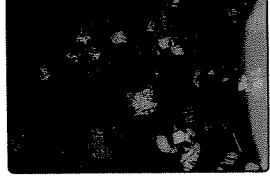
U.X.N.

27 JAN 1987 09
Ki-5-45-2 8.4



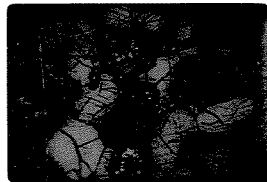
Spinel in hornblende has
pc coronal, that in hornbl. does
not

28 JAN 1987 09
Ki-5-45-2 8.4



U.X.N.

29 JAN 1987 09
Ki-5-46-1 8.4



Extensive partial fusion
of Ca-diopside websterite

30 JAN 1987 09
Ki-5-46-1 8.4



U.X.N.

31 JAN 1987 09
Ki-5-34-2 3.4



pc Ca-mellilite kelp hornbl.
in hornbl.

32 JAN 1987 09
Ki-5-34-2 3.4



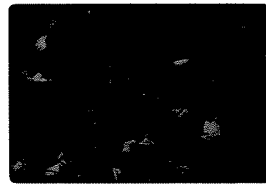
U.X.N.

33 JAN 1987 09
Ki-5-50 8.4



Probably post mag pc in
hornbl. porphyroclastic hornbl.

34 JAN 1987 09
Ki-5-50 8.4



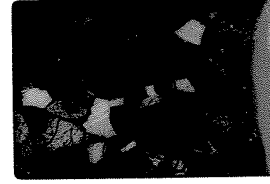
U.X.N.

35 JAN 1987 09
Ki-5-53 3.4



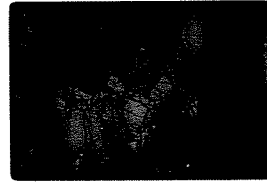
Polygonized pc in
hornbl. porphyroclastic hornbl.

36 JAN 1987 09
Ki-5-53 3.4



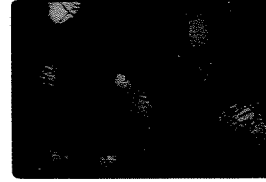
U.X.N.

37 JAN 1987 09
Ki-5-131 8.4



Yellow glass & hornblende
in hornbl. websterite

38 JAN 1987 09
Ki-5-131 8.4



U.X.N.