

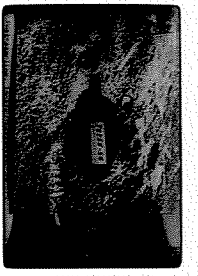
20115

2481 934 2

A-17 5th, 7 Block



57a 9  
FEB 73P2 4



A-17 5th, 8

2481 934 3

A-17



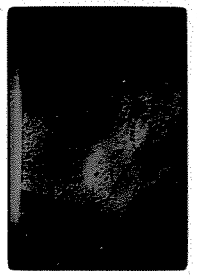
6  
FEB 73P2 7



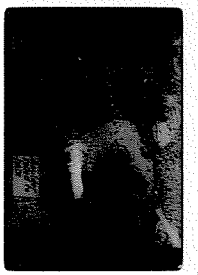
A-17 5th, 8

2481 934 4

A-17



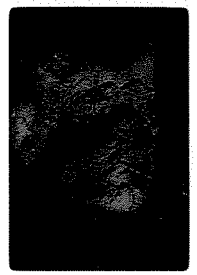
6  
FEB 73P2 4



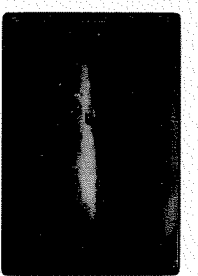
A-17 5th, 8. West 4

2481 934 5

A-17



7  
FEB 73P2 10



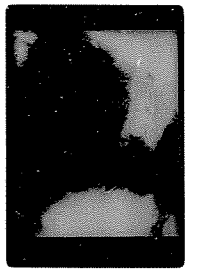
A-17 5th, 7 Block

2481 934 6

A-17



57a 9  
FEB 73P2 5



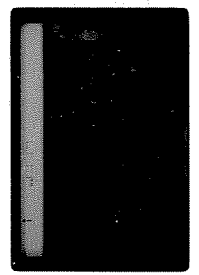
A-17 Terrace-Hillview

32 NOV 72P8



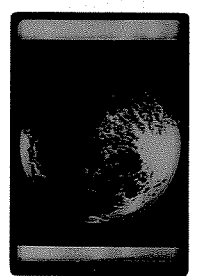
A-17 pre-warehouse

12 NOV 72P8



A-17 Pre-warehouse

5 NOV 72P8



A-17

8P2 / NOV 9

1,1 JAN 3PB  
75055,8 8.2



Gen. view Subfleur beetle

6,1 JAN 3PB  
75055,8 8.3



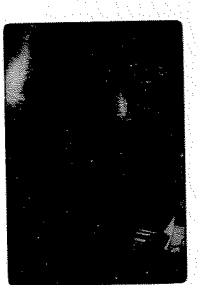
Subfleur beetle

10,1 JAN 3PB  
70035,7 5.3



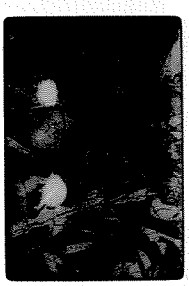
Subfleur beetle

32,1 JAN 3PB  
70035,7 8.4



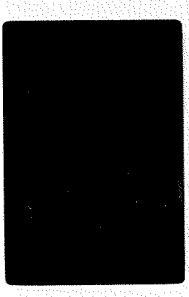
uXN

3,1 JAN 3PB  
75055,8 5.3



Subfleur beetle

7,1 JAN 3PB  
75005,8 3.4



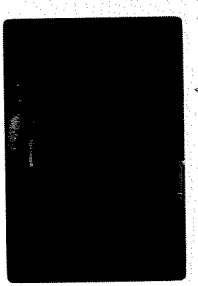
Subfleur beetle

26,1 JAN 3PB  
70035,7 3.4



Subfleur beetle -  
Pinnose texture

35,1 JAN 3PB  
75055,8 3.4



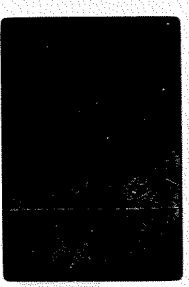
Subfleur beetle

4,1 JAN 3PB  
75055,8 5.3



Subfleur beetle

9,1 JAN 3PB  
70035,7 8.2



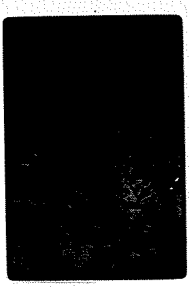
Subfleur beetle

5,1 JAN 3PB  
75055,8 5.3



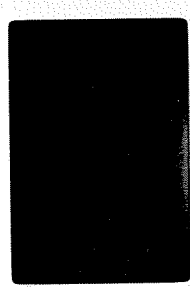
Subfleur beetle

11,1 JAN 3PB  
70035,7 8.2



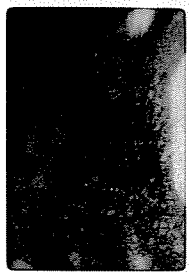
Subfleur beetle

31,1 JAN 3PB  
70035,7 3.4



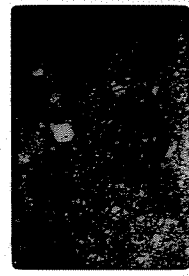
Subfleur beetle  
Pinnose texture

1,2  
78155,7  
JAN 1964  
8.2



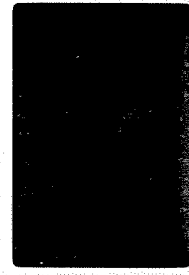
Gen. weak. Not characteristic  
metachalcite

1,2  
78155,7  
JAN 1964  
8.2



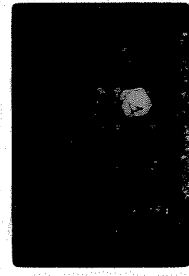
LEYN

1,2  
78155,7  
JAN 1964  
5.3



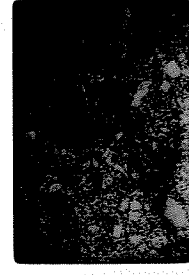
Metachalcite frag. may  
be glaucous

1,2  
78155,7  
JAN 1964  
5.3



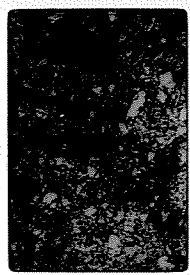
LEYN

1,2  
78155,7  
JAN 1964  
5.3



Different metachalcite frag.  
MX brownish

1,2  
78155,7  
JAN 1964  
5.3



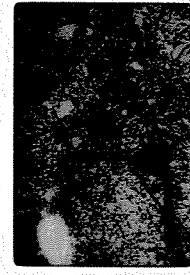
LEYN

1,2  
78155,7  
JAN 1964  
5.3



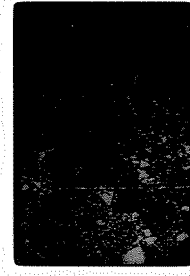
These metachalcite frags. are  
more conifer than in other parts

1,2  
78155,7  
JAN 1964  
5.3



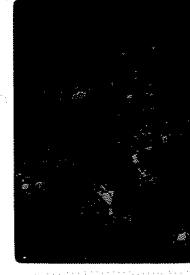
LEYN

1,2  
78155,8  
JAN 1964  
8.2



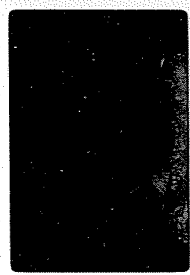
Gen. Broken metachalcite  
Note spaces of intergrowth  
matrix at start

1,2  
78155,8  
JAN 1964  
8.2



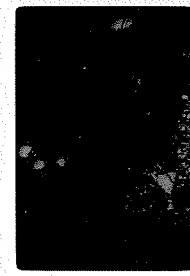
LEYN

1,2  
78155,8  
JAN 1964  
5.3



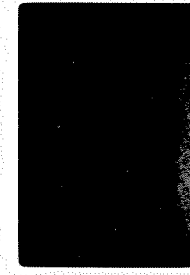
Close of 4

1,2  
78155,8  
JAN 1964  
5.3



LEYN

1,2  
78155,7  
JAN 1964  
3.4



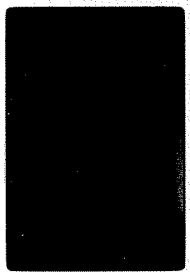
Metachalcite frag. in pattern  
of metachalcite

1,2  
78155,7  
JAN 1964  
3.4



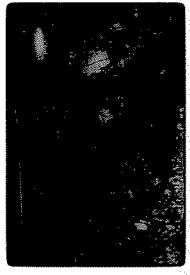
LEYN

1,2  
78155,7  
JAN 1964  
3.4



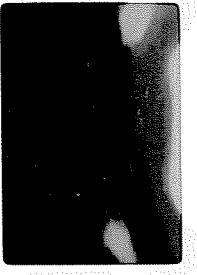
Frag of metachalcite. 20x  
"in the green" particles

1,2  
78155,7  
JAN 1964  
3.4



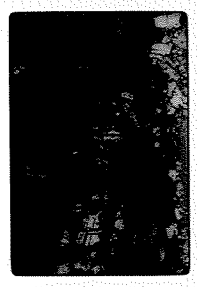
LEYN

31,2  
78155,7  
JAN 1984  
0.9



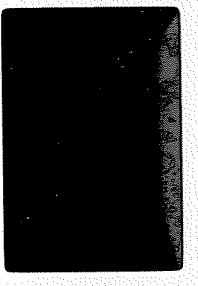
Clear view of "wintergreen" petal  
view of 1/1 in dist

31,2  
78155,7  
JAN 1984  
0.9



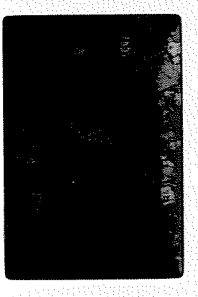
LKN

31,2  
78155,7  
JAN 1984  
0.6



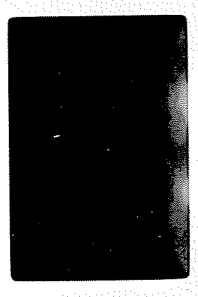
Necklace PRs (3) in petal  
greenish pubesc. - polyg. texture

31,2  
78155,7  
JAN 1984  
0.6



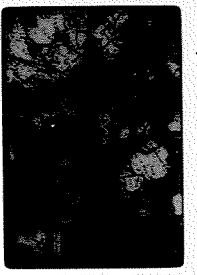
LKN

31,2  
78155,7  
JAN 1984  
0.6



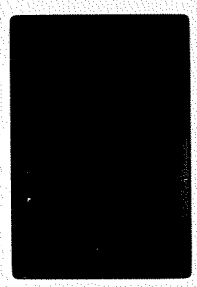
Necklace consisting of multicellular PRs with multicellular green.

31,2  
78155,7  
JAN 1984  
0.6



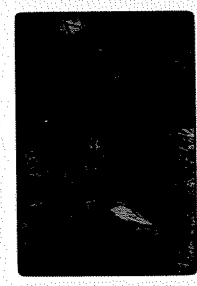
LKN

31,2  
78155,7  
JAN 1984  
0.9



oddly bellie. PR in neck-  
clearly 6/9.

31,2  
78155,7  
JAN 1984  
0.9



LKN

31,2  
78155,8  
JAN 1984  
3.4



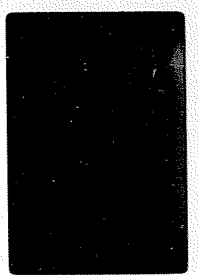
Group of multicellular structures  
with pubescence & wintergreen  
pattern

31,2  
78155,8  
JAN 1984  
3.4



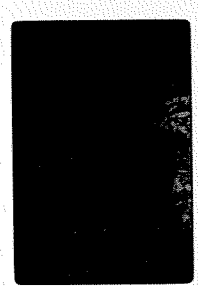
LKN

31,2  
78155,8  
JAN 1984  
0.9



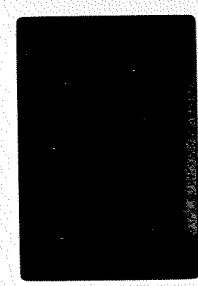
Close up of round wintergreen  
pubescence - 5:10 text

31,2  
78155,8  
JAN 1984  
0.9



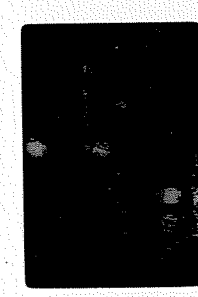
LKN

31,2  
78155,8  
JAN 1984  
2.2



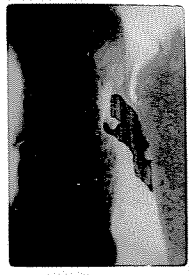
Close up. Some group in neck  
colored in foliole's complete  
texture

31,2  
78155,8  
JAN 1984  
2.2



LKN

1,03  
7815578  
A.2



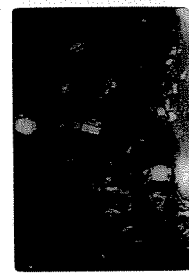
Also T cell zone seen in this  
Add in folder under in Houston  
TX house

1,03  
7815578  
3.4



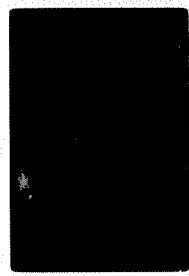
LXN

1,03  
7815578  
A.2



LXN

1,03  
7815578  
0.9



LXN Polys. cell. of R

1,03  
7815578  
3.4



3 nucleolar clefs

1,03  
7815578  
5.3



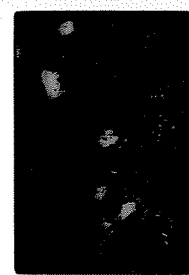
Keat like DC35. more with  
lytic debris. Big Px Pol.  
loblast

1,03  
7815578  
3.4



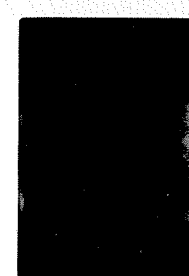
LXN

1,03  
7815578  
5.3



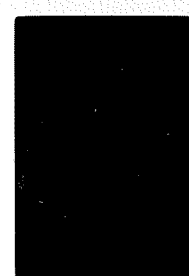
LXN

1,03  
7815578  
3.4



3 nucleolar clefs

1,03  
7815578  
3.4



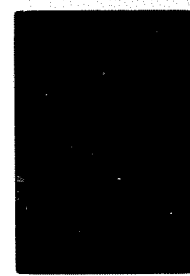
Gen. seeds

1,03  
7815578  
JAN 1982  
3.4



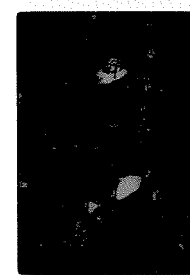
LXN

1,03  
7815578  
JAN 1982  
3.4



Gen seeds

1,03  
7815578  
JAN 1982  
3.4



LXN

1,03  
~~7815578~~  
JAN 1982  
3.4



Another view of motomary  
not optical text of ops

1,03  
7815578  
JAN 1982  
3.4



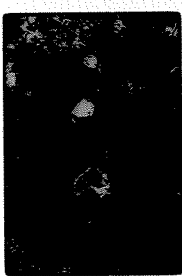
LXN

1,03  
7815578  
0.9



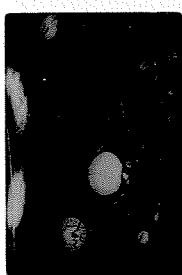
Highly opx deep. opx under  
Oliv. R, PC NK frayo

1,03  
7815578  
0.4



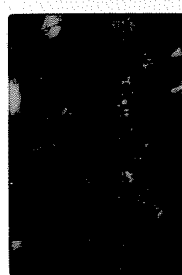
LXN

1,03  
7815578  
8.2



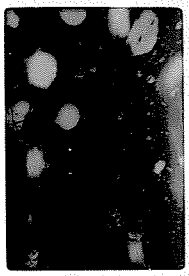
Gen seeds. Round PC frayo  
in Densities. Text like 78155

1,03  
7815578  
8.2



LXN

303  
72157 5.3



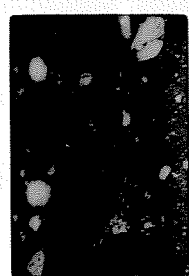
Cluster of 18

5,03  
72157 3.4



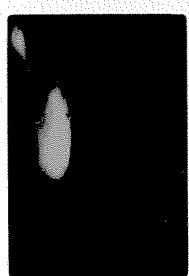
LXN

31,03  
72157 5.3



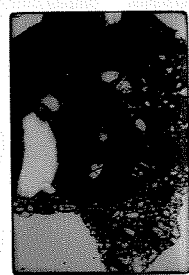
LXN

5,03  
72157 8.2



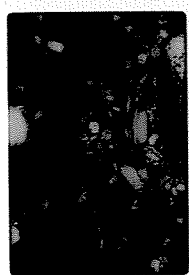
Close - contact granulation -  
o1. Blue-gray electron in "Tan"

303  
72157 6.6



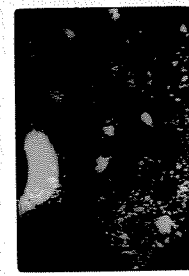
"Tan" - Blue-gray contact  
Tan has high 8.1d. contact

7,03  
72157 8.2



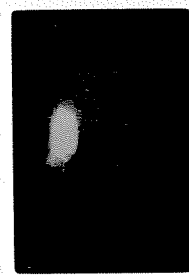
LXN

3,03  
72157 6.6



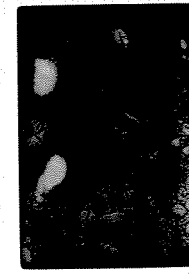
LXN

8,03  
72157 0.9



Blue-gray granulation. Text  
One particle, small flat (gray)  
one sp? w. bubbly sess.

14,03  
72157 3.4



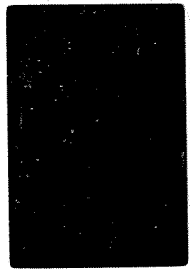
Blue-gray electron in "Tan"

9,03  
72157 0.9



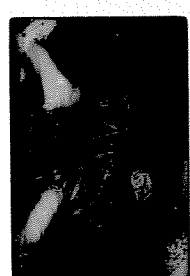
LXN

30,03  
72157 0.6



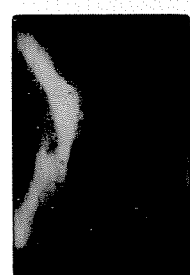
Cauchy w/ projections, lots  
of sp. particles, in blue-gray

31,03  
72157 0.6



LXN

2,03  
72157 0.9



Sp. with the pc spectrum.  
No sp. particles. Clusters in  
blue-gray

8,03  
72157 0.9



LXN

14,03  
72157 0.7



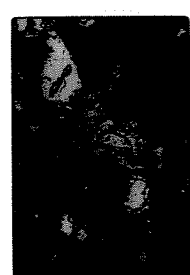
LXN. Date combination of  
granulation - spectrum. Pc in  
blue sp

3,03  
72157 0.7



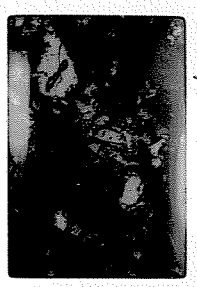
LXN, Repeat 7 34

303  
72157 0.7



LXN "Tan" 01 + R

1,04  
771157 0.2



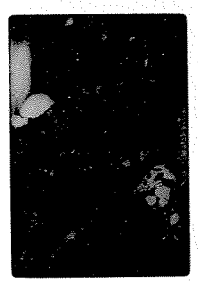
11 Tan 4 part. OLP2

1,04  
771357 2.2



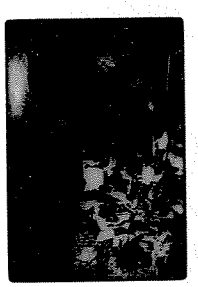
2 small cl, large parts, pink pe  
Dnk areas below. pol by base  
CP30, P4415, 514444 on 10

11,04  
771857 2.2



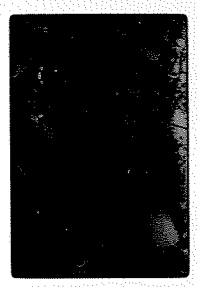
Stomach no 10

1,04  
70149,1 8.2



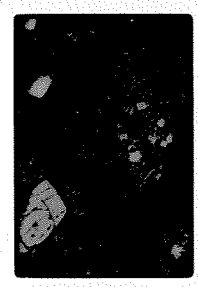
LCXN

1,04  
771157 0.9



Tan - Blue gray cat.

1,04  
771357 2.2



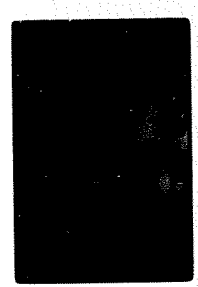
LCXN

12,04  
771357 0.7



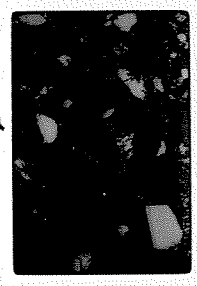
Skipped 4 granule cl. in  
interpeaks, areas

1,04  
70149,1 6.6



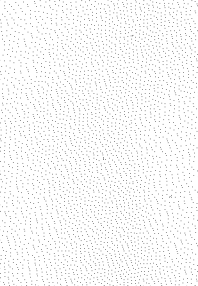
Clears

1,04  
771157 0.9

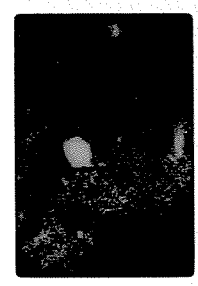


LCXN

1,04  
771357 2.2

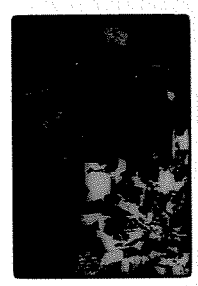


13,04  
771357 0.9



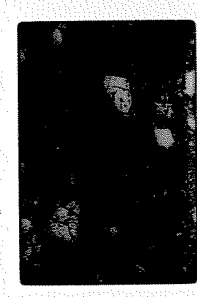
Strongly zoned P. Periphy.  
no cl. of white and interwhit.

1,04  
70149,1 6.6



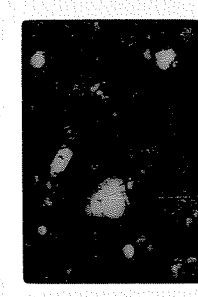
LCXN

1,04  
771357 3.4



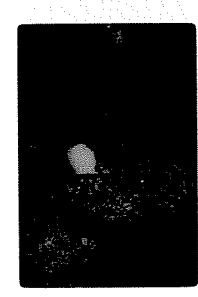
11 Dense 4, 2 small cl, Pe flgs  
in perikl. in mix w/ h. BF  
peaks

1,04  
771357 2.2



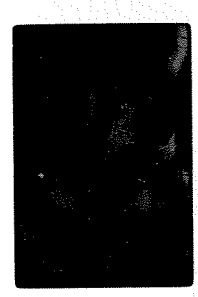
Stomach 8

14,04  
771357 0.9



Stomach no 13

1,04  
70149,1 5.3



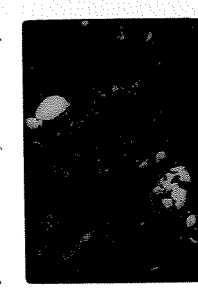
Geophane Rk

1,04  
771357 3.4



LCXN

1,04  
771357 2.2



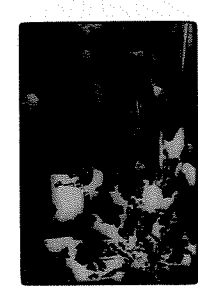
Polyom. P., small cl,  
Pcs

15,04  
70149,1 8.2



Gen. Vico

1,04  
70149,1 5.3

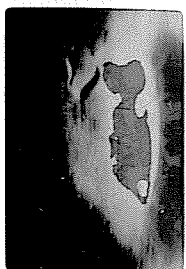


LCXN



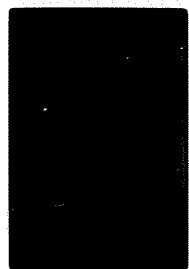


28,05 JAN 1988  
70149,1 3.4



Px - P. interposita

28,05 JAN 1988  
70149,1 0.9



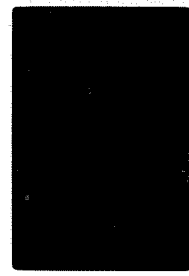
LCXN

29,05 JAN 1988  
70149,1 3.4



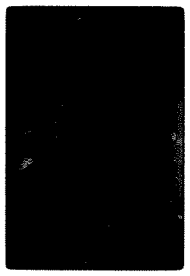
LCXN

24,05 JAN 1988  
76250,5 3.4



Invented pigeon. cpx's also have red neck?

29,05 JAN 1988  
76250,5 3.4



LCXN

~~LCXN~~ ~~LCXN~~ ~~LCXN~~  
all in "subventral" in the  
"gray" part of NK

29,05 JAN 1988  
70149,1 3.4



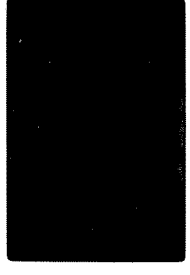
Complex Px zoning's  
divided.

29,05 JAN 1988  
76250,5 3.4



LCXN

30,05 JAN 1988  
76250,5 3.4



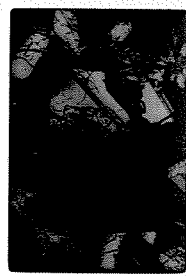
Reform's pretty regular.  
all in "blue gray" BK

35,05 JAN 1988  
76250,5 0.9



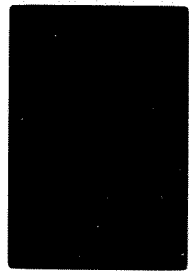
Invented pig.

29,05 JAN 1988  
70149,1 3.4



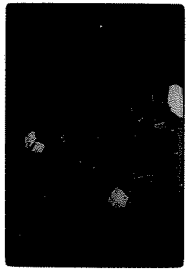
LCXN

26,05 JAN 1988  
76250,5 3.4



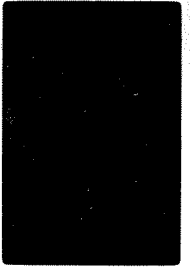
More invented pig.

31,05 JAN 1988  
76250,5 3.4



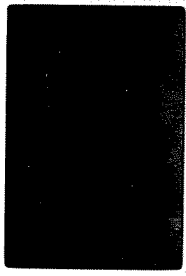
LCXN

37,05 JAN 1988  
76250,5 0.9



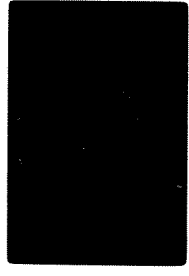
2 Invented Pig. Specimen +  
1 cpx. 20/ fine Nummidae  
of X-fractioning

29,05 JAN 1988  
70149,1 0.9



LCXN.

27,05 JAN 1988  
76250,5 3.4



LCXN

32,05 JAN 1988  
76250,5 0.7



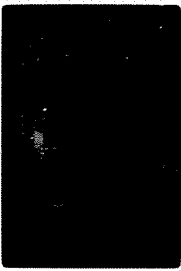
Invented pig.

1,06  
76250,5 0.9



20pxs approx lamellae  
1/20x 20/line lamellae

3,06  
76250,5 3.4



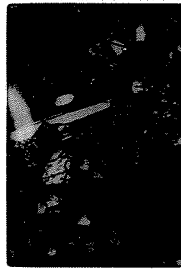
20pxs approx, high  
20/20px

9,06  
76250,5 0.9



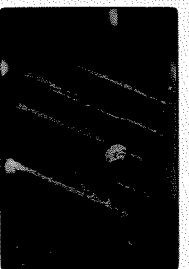
Inverted pig.

9,06  
76250,5 3.4



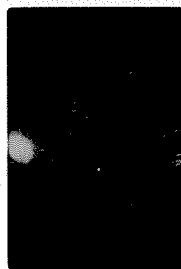
WKN

5,06  
76250,5 0.7



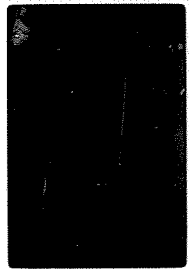
~~5,06~~ Inverted  
pig.

11,06  
76250,5 3.4



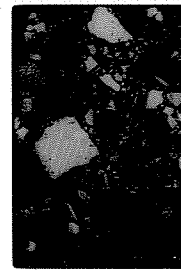
Many inverted pig. frags  
+ embedded clast approx  
frags

1,06  
76250,7 0.7



Inverted pig.

3,06  
76250,5 3.4



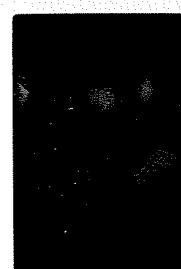
WKN

3,06  
76250,5 0.7



Inverted pig.

3,06  
76250,5 3.4



Apparent frag. (clast in broken  
matrix) approx. 0.1v.

14,06  
76250,6 3.4



WKN

15,06  
76250,5 3.4



Clust of broken "positive  
matrix" material

3,06  
76149,1 3.4



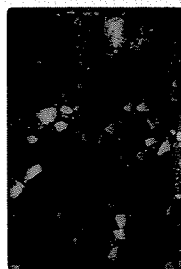
WKN

3,06  
76149,1 3.4



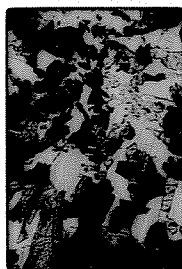
Pe-px intergrowth

10,06  
76250,5 3.4



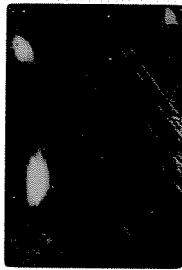
WKN

3,06  
76149,1 3.4



WKN

7,06  
76250,5 0.9



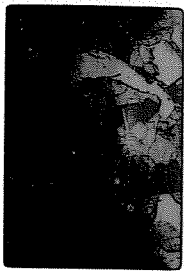
Clust matrix of pe in water  
+ matrix

18,06  
76149,1 3.4



Px-qlm clst, matrix text  
clast 0.1v at 20x

3,06  
760149,1 3.4



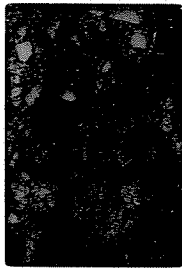
Rx film #4, Neoblast forest,  
Nivulidaster, 1949 zoning

3,06  
76015,7 3.4



gran. texture

34,06  
76015,9 2.2



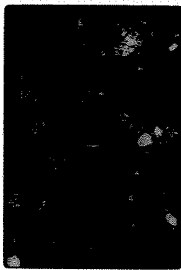
clear, Nbt & opx growth  
in actinolite area

3,06  
760149,1 3.4



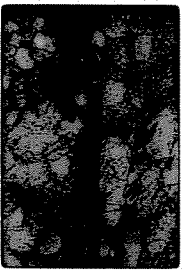
LN

3,06  
76015,7 3.4



LN

36,06  
76015,9 0.9



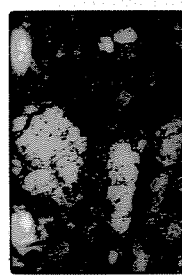
clear

3,06  
76015,8 2.7



"Pervite" & "hornfels" w/  
opx enclosing pl, Oiv?

37,06  
76015,9 0.9



LN

3,06  
76015,7 0.9



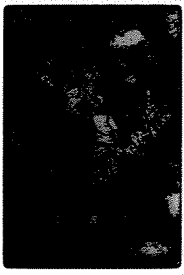
granobol. Oiv, silic texture  
re reprecipitates (2 zones),  
pink px also Oiv

3,06  
76015,8 9.4



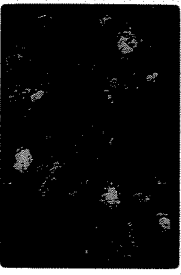
actinolite, imbedded by  
dark, peritectic. Mat.

3,06  
76015,7 0.9



LN

3,06  
76015,7 3.4



LN

15,07 JAN 1984  
76250,5 0.7



Inverted pig.

15,07 JAN 1984  
76250,5 3.4



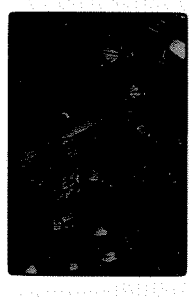
Inverted pig. + heavy pe  
enclosing space w/ blum.?

14,07 JAN 1984  
76250,5 0.9



2 PKs w/ (1) 1500, (1) 1000  
as thin lamellae, 1/2  
faces

15,07 JAN 1984  
76250,5 3.4



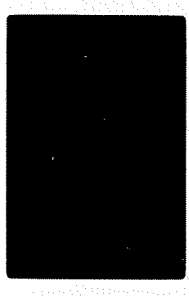
LKXN

15,07 JAN 1984  
76250,5 0.9



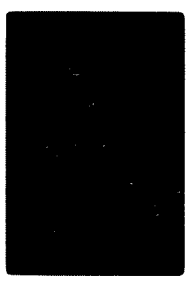
Inverted pig.

20,07 JAN 1984  
76250,5 3.4



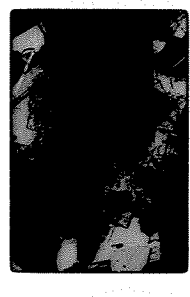
Small metaclastic (broken  
old) in bx w/ inverted pig.

20,07 JAN 1984  
76250,5 3.4



Skin of the 'horrid' rite on  
the summit of a 'horrid' rite.

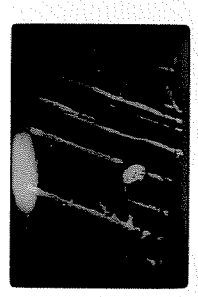
2,07 JAN 1984  
70149,1 3.4



LKXN

Another pe - im clot. the  
print has also cluster of  
red/ind text. Note 1002 2004

16,07 JAN 1984  
76250,5 0.7



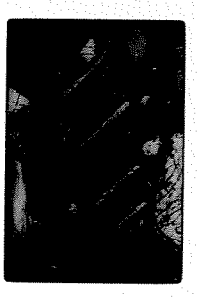
Inverted pig.

21,07 JAN 1984  
76250,5 3.4



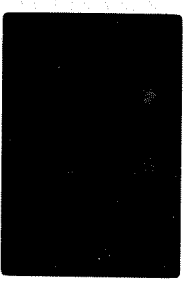
LKXN

11,07 JAN 1984  
76250,5 0.7



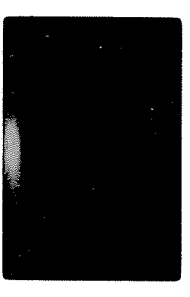
Inverted pig.

21,07 JAN 1984  
76250,5 3.4



Big metaclastic, broken  
old = blue grey.

20,07 JAN 1984  
70149,1 3.4



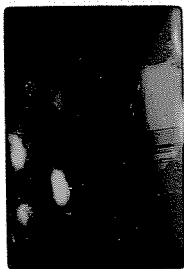
pe - im clot, red/ind text,  
olive cluster of 2000s

21,07 JAN 1984  
70149,1 3.4



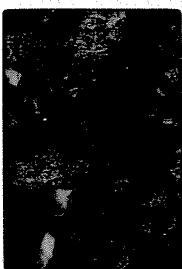
LKXN

31, 07 JAN 1984  
70149, 1 0.9



Pe-px inclusions.

30, 07 JAN 1984  
77135, 2 0.9



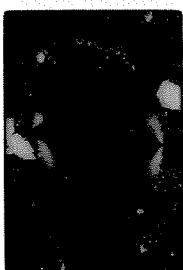
3 small cavities

32, 07 JAN 1984  
77135, 2 3.4



3.4  
Inclusions of perphosphates  
No inclusions in interstitial  
No texture with no change to  
cavity. Big one best seen

31, 07 JAN 1984  
77135, 2 2.2



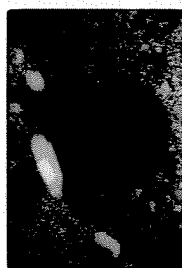
Cavity w/ inclusions  
of perphosphates

31, 07 JAN 1984  
77135, 2 2.2



Cavity w/ inclusions  
of perphosphates

34, 07 JAN 1984  
77135, 2 0.9



3  
Cavity, spherical inclusions

35, 07 JAN 1984  
77135, 2 0.9



3  
w/ in. small spherical  
to big one

3, 8  
72035,7  
JAN 3P5  
8.2



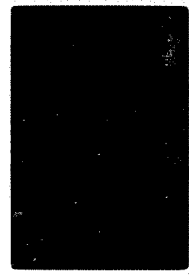
Gen. view

4, 8  
72035,7  
JAN 3P5  
8.2



LXW

5, 8  
72035,7  
JAN 3P5  
5.3



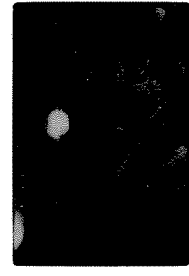
Phase texture

6, 8  
72035,7  
JAN 3P5  
5.3



LXW

9, 8  
73055,8  
JAN 3P5  
8.2



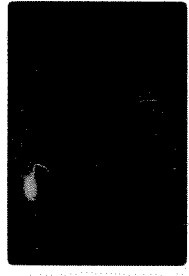
Gen. view

10, 8  
73055,8  
JAN 3P5  
8.2



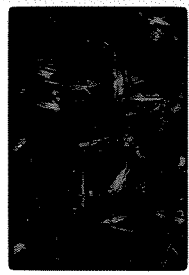
LXW

11, 8  
75055,8  
JAN 3P5  
8.2



Gen. view

12, 8  
75055,8  
JAN 3P5  
8.2



LXW

13, 8  
75055,8  
JAN 3P5  
5.3



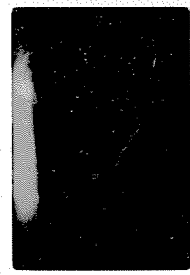
Clear

14, 8  
75055,8  
JAN 3P5  
5.3



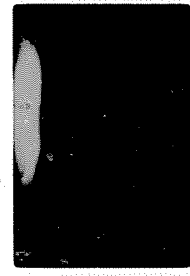
LXW

17, 8  
72355,4  
JAN 3P5  
8.2



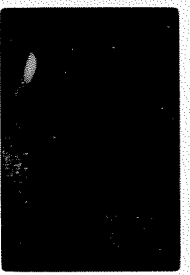
Checks in VET Perithele  
to sperm blebs max. 2/10  
d/b/w

18, 8  
72355,4  
JAN 3P5  
8.2



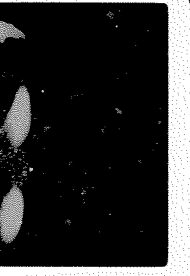
LXW

19, 8  
72355,4  
JAN 3P5  
8.2



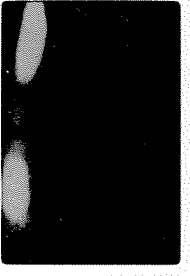
Big clear gaps finally! 2/10  
pc, smaller ones clean

20, 8  
72355,4  
JAN 3P5  
8.2



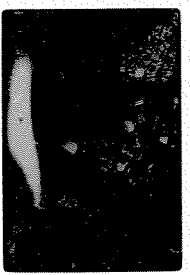
LXW

21, 8  
72355,4  
JAN 3P5  
5.3



Clear, 11 Decrite 11 x 2000  
2000 pc per phycoplast

22, 8  
72355,4  
JAN 3P5  
5.3



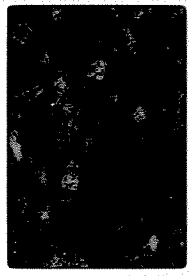
LXW

28, 8 JAN 3PB  
72355, 4 ~~5.3~~



Keenest cleat - No relief that  
was found with 1/2. See the  
edges, a very fine 0.1

20, 8 JAN 3PB  
72355, 4 0.9



LXN

38, 8 JAN 3PB  
72355, 4 0.9



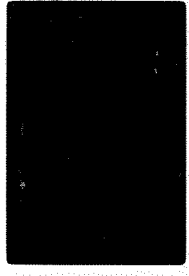
Inverted Pic. cleat of 1/2 -  
PC copy. of security. 8px.

24, 8 JAN 3PB  
72355, 4 5.3



LXN

24, 8 JAN 3PB  
72355, 4 3.4



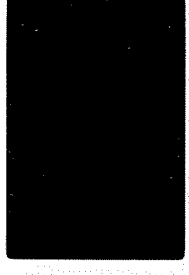
Cleat w/ relief in PC

34, 8 JAN 3PB  
72355, 4 0.9



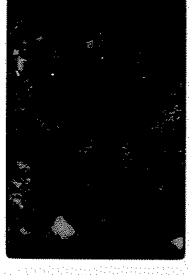
LXN

20, 8 JAN 3PB  
72355, 4 0.9 ~~5.3~~



Five or Polikidol. texture.  
Absence of the lines, common  
since it's there (groups or mass?)

20, 8 JAN 3PB  
72355, 4 3.4



LXN

30, 8 JAN 3PB  
72355, 4 0.9



Hydro in of-PC-px? cleat.  
PC necessary to see text.

26, 8 JAN 3PB  
72355, 4 0.9



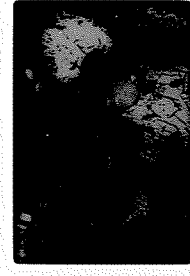
LXN

31, 8 JAN 3PB  
72355, 4 3.4



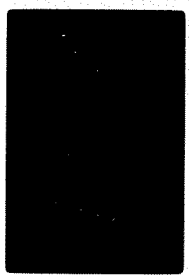
3 cleats - metal, w/ some texture  
of a Cl-1/2 cleats, both w/  
leaving cavities

30, 8 JAN 3PB  
72355, 4 0.9



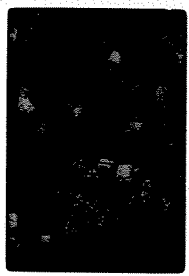
LXN

21, 8 JAN 3PB  
72355, 4 0.9



Caution, eg Polikidol  
texture

32, 8 JAN 3PB  
72355, 4 3.4



LXN

30, 8 JAN 3PB  
72355, 4 0.9



General. of relief texture  
PC